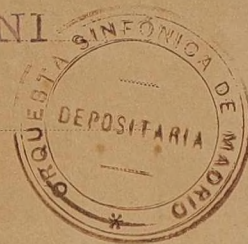


OBOE 1

Orquesta Sinfónica de Madrid

Núm -- 52

FRANCESCA DA RIMINI



TSCHAIKOWSKY



Oboe 1.

FRANCESCA DA RIMINI

FANTASIE D'APRES DANTE

P. Tschaikowsky Op. 23.

Andante lugubre.

4. *p cresc* *f* *f*

mf *p* *f* *mf* *f*

Piu

mosso. Moderato.

1. *f*

ff

Al. *f*

B1.



Tous droits d'Édition, d'exécution publique, de reproduction et d'arrangements réservés, pour tous pays y compris le Sénégal, le Bénin et le Cameroun

Oboe 1.

f

dim. *ritenuto*

Tempo I^o

Allegro vivo.

p *mf* *mf* *mf* *mf* *fff*

p *mf* *mf* *mf* *mf* *fff*

Oboe 1.

1. 1. E *fff*

ff 1. 1. 1.

fff F

1. G > > 2. *f*

f

ff 1. 1.

H6 *ff*

ff

fff 1.

Oboe 1.

1. 1. 1K

1. 2. *ff*

2. L *fff*

fff

1.

5 M 23 1 6. 7. 1. *mf* *p* *sf* *p*

Andante cantabile non troppo.

Fagotto

riten.

20 21 22 23 24

Oboe *p* 6 N solo

f

f



Oboe 1.

Musical score for Oboe 1, measures 1-20. The score consists of four staves of music. The first staff begins with a treble clef and a key signature of one sharp (F#). The second staff has a dynamic marking of *f*. The third staff has a dynamic marking of *p*. The fourth staff ends with a double bar line and the number 20.

= Volta al Flauto =

Coro
Alleso tempo.

Musical score for Oboe 1, measures 21-30. The score consists of seven staves of music. The first staff is in 12/8 time and has a dynamic marking of *p dolce cantabile*. The second staff has a dynamic marking of *dolce.* and a first ending bracket. The third staff has a dynamic marking of *p* and a second ending bracket. The fourth staff has a dynamic marking of *mf* and a *staccato.* marking. The fifth staff has a dynamic marking of *mf* and a first ending bracket. The sixth staff has a dynamic marking of *espr.* and a dynamic marking of *p*. The seventh staff has a dynamic marking of *mp* and a dynamic marking of *pp*. The number 3094 is written at the bottom.

Oboe1.

3

Q

p *es pres.*

R

cresc *f* *mf*

f *mf* *f*

3. S1.

fff

3

p *mf* *p* *p*

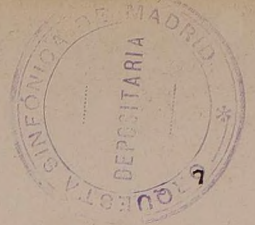
Allegro vivace.

ff *fff*

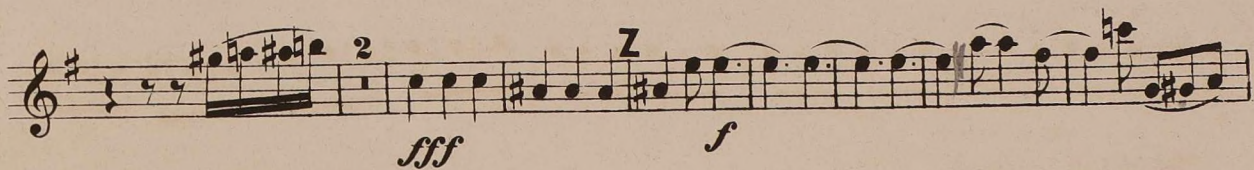
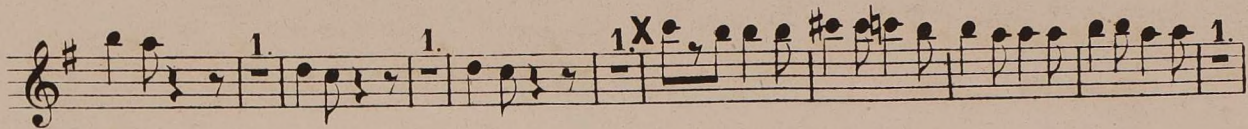
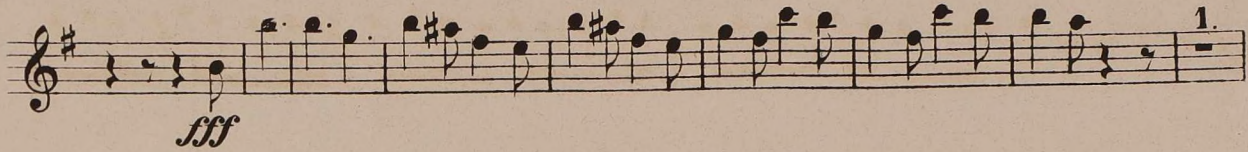
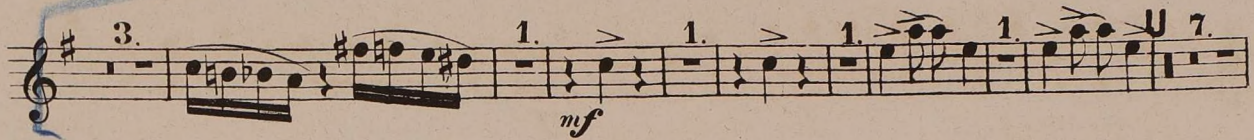
Allegro vivo.

19

mf *mf*



Oboe 1.



Oboe 1.

1. 1. 11.

Poco piu mosso.

mf *sol* *f* *cresc.*

ff

ff

meno 1.