

SYMPHONY No. 1
ПЕРВАЯ СИМФОНИЯ
(g-moll)

1

ЗИМНИЕ ГРЕЗЫ

Соч. 13

П. ЧАЙКОВСКИЙ

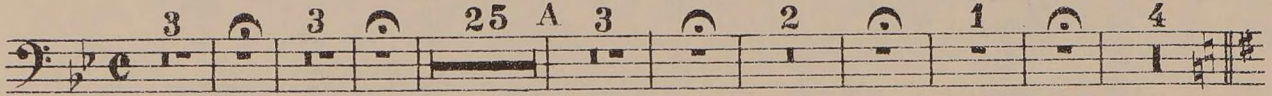
(1840-1893)

1. Грёзы зимнею дорогою *Tacet*
2. Угрюмый край, туманный край *Tacet*
3. Скерцо *Tacet*
4. Финал

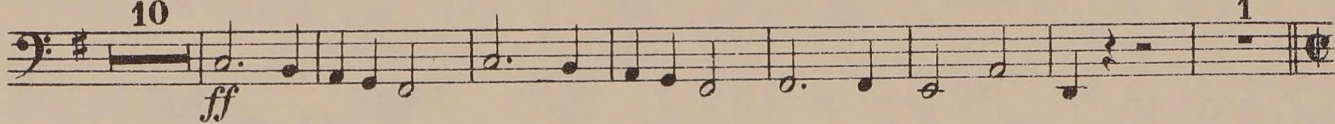
Tuba

Andante lugubre

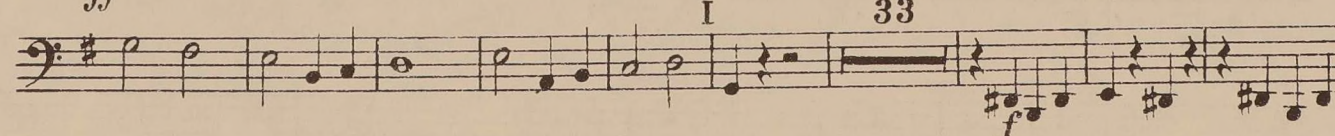
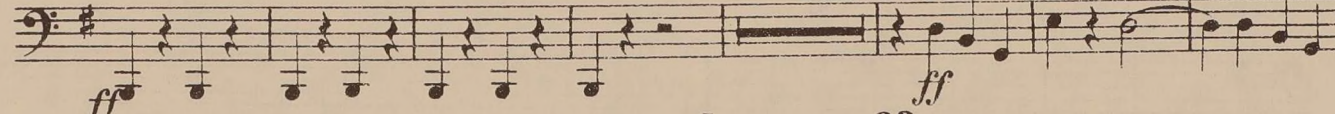
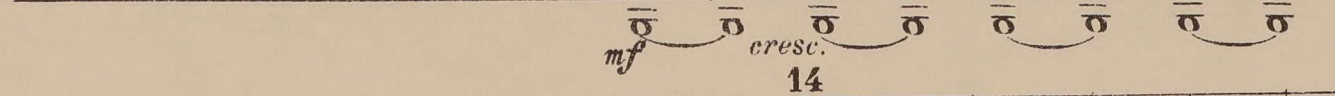
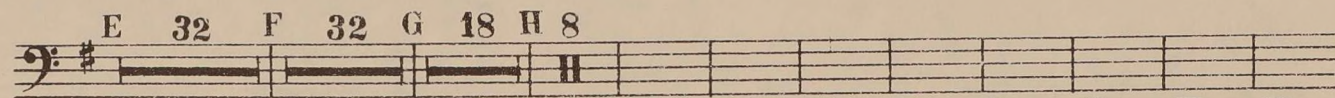
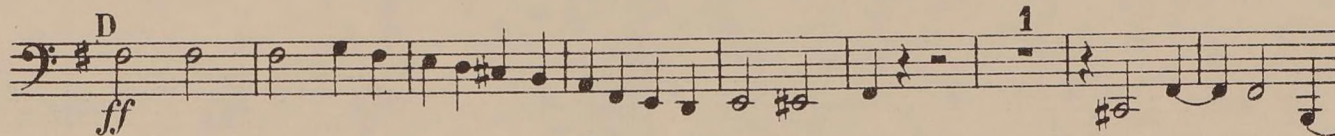
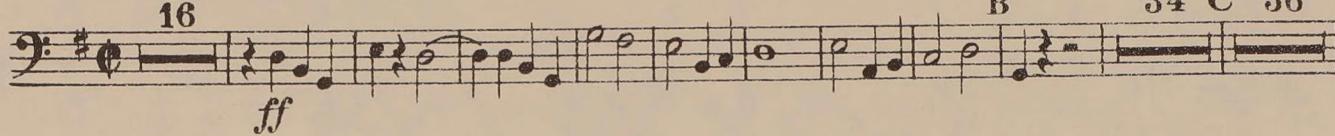
accel.



Allegro moderato

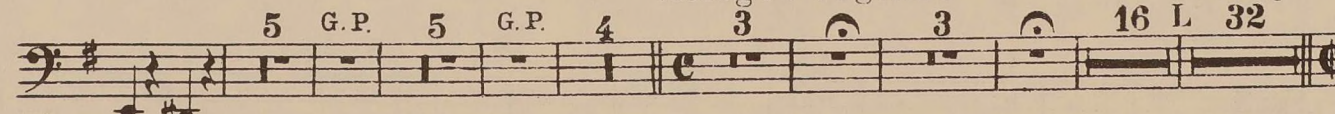


Allegro maestoso



Allegro lugubre

string.



(19)

Tuba

Allegro vivo

ff

First musical staff in bass clef with a key signature of one sharp (F#). It begins with a dynamic marking of *ff* and contains a series of eighth and quarter notes.

3
ff sempre

Second musical staff in bass clef with a key signature of one sharp (F#). It starts with a triplet of eighth notes marked with the number '3' above the staff, followed by a dynamic marking of *ff sempre*.

Third musical staff in bass clef with a key signature of one sharp (F#), continuing the melodic line with various note values and rests.

N piú animato

Fourth musical staff in bass clef with a key signature of one sharp (F#). It begins with a dynamic marking of *N piú animato* and features a mix of note values and rests.

Fifth musical staff in bass clef with a key signature of one sharp (F#), showing a rhythmic pattern of eighth notes and rests.

28
f

Sixth musical staff in bass clef with a key signature of one sharp (F#). It includes a measure rest for 28 measures, followed by a dynamic marking of *f* and a melodic line.

Seventh musical staff in bass clef with a key signature of one sharp (F#), featuring a rhythmic pattern of eighth notes.

7
7

Eighth musical staff in bass clef with a key signature of one sharp (F#). It contains two measure rests, each marked with the number '7' above the staff, followed by a melodic line.

Ninth musical staff in bass clef with a key signature of one sharp (F#), showing a rhythmic pattern of eighth notes.

Tenth musical staff in bass clef with a key signature of one sharp (F#), featuring a melodic line with some rests.

1 1 1 1 3

Eleventh musical staff in bass clef with a key signature of one sharp (F#). It features a rhythmic pattern of eighth notes with fingerings '1' and '3' indicated above the notes.