

TROMBON-II

= SONATA - V. =

All.^o et spiritoso assai. || 3/4

mf

11 12 13 14

ppp

4 16

3 16 4 7

p

5

mf

p

p

p

p

quer her
tromba

Musical staff with notes and a dynamic marking 'p'.

Musical staff with notes and a measure rest marked '12'.

Musical staff with measure rests marked '7', '16', '8', and '16', and performance instructions 'poco rall' and 'good best'.

Blank musical staff.

Blank musical staff.

Blank musical staff.

Blank musical staff.

Blank musical staff.

Blank musical staff.

Blank musical staff.

TROMBON - II^o

(nova)
= SONATA - XVI. =

M. - Faust

TROMBON - I^o

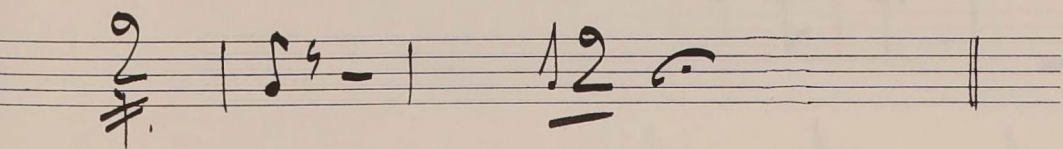
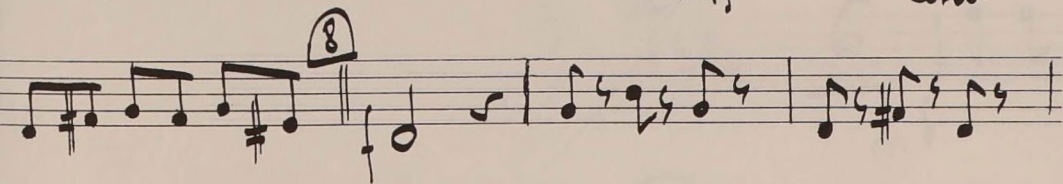
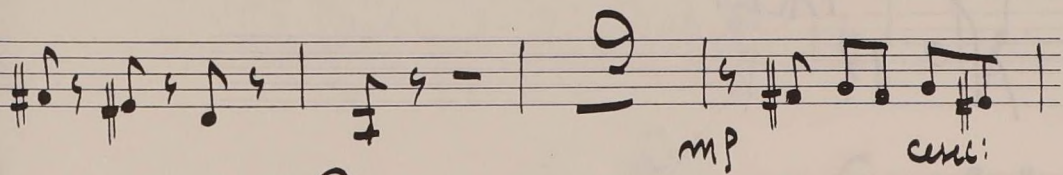
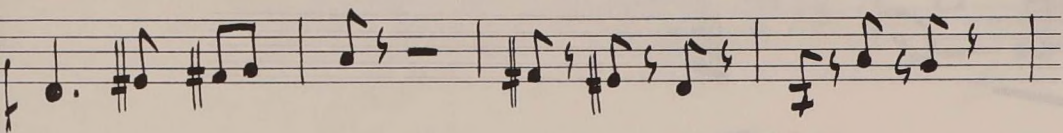
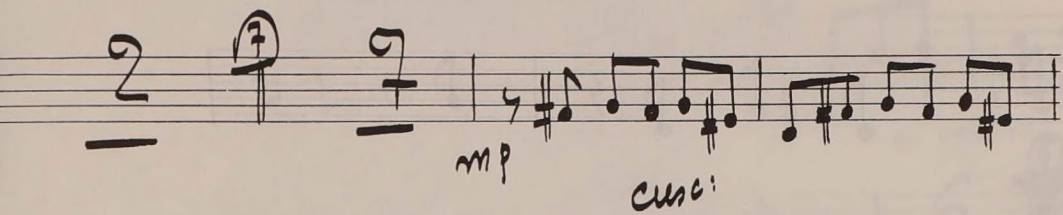
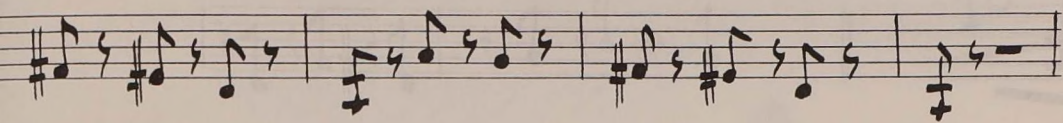
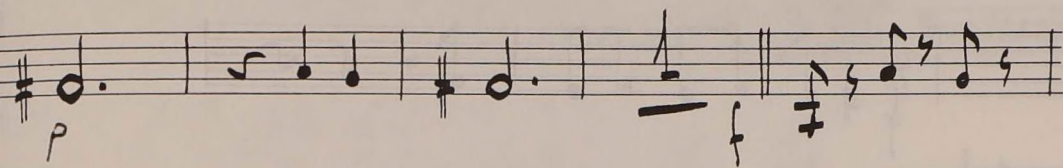
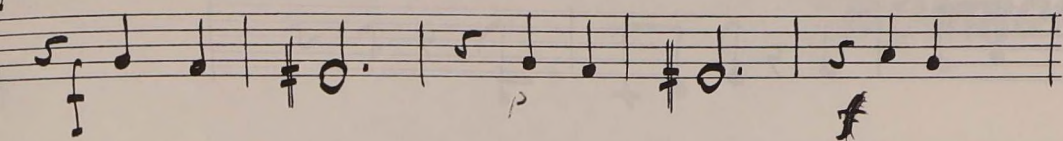
= SONATA - XVI =

(BAJO)

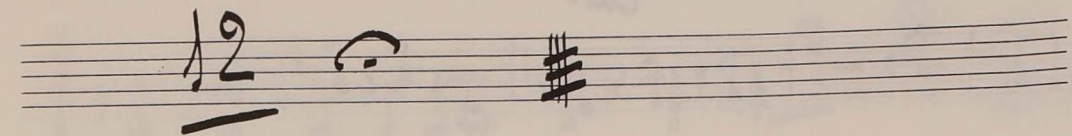
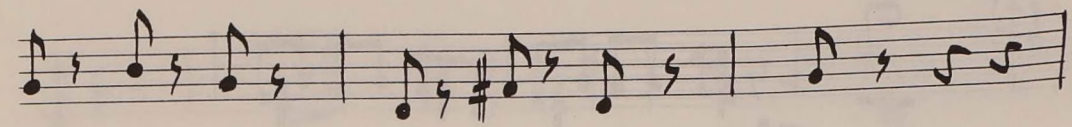
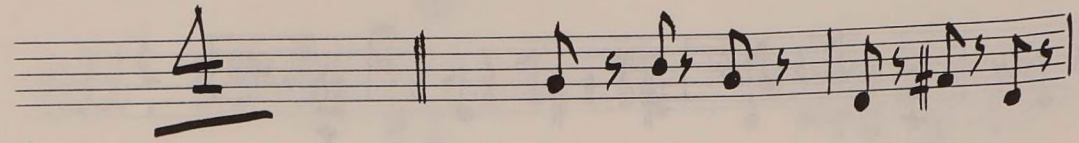
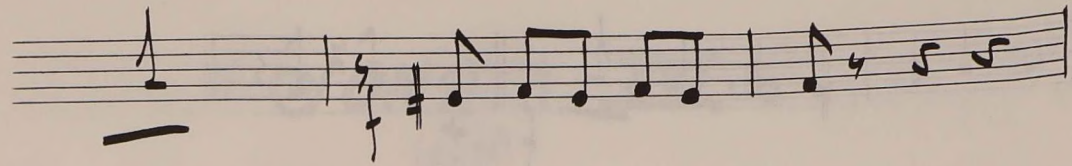
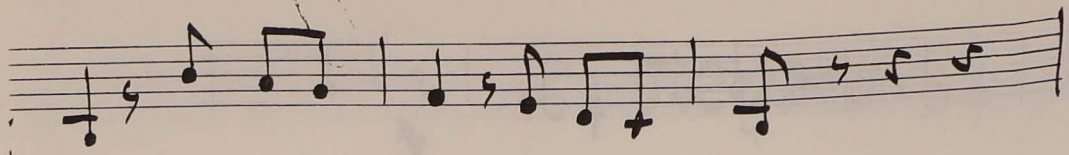
all.^o || 9: # # $\frac{3}{4}$ f

16 3 16 f 4 12 4

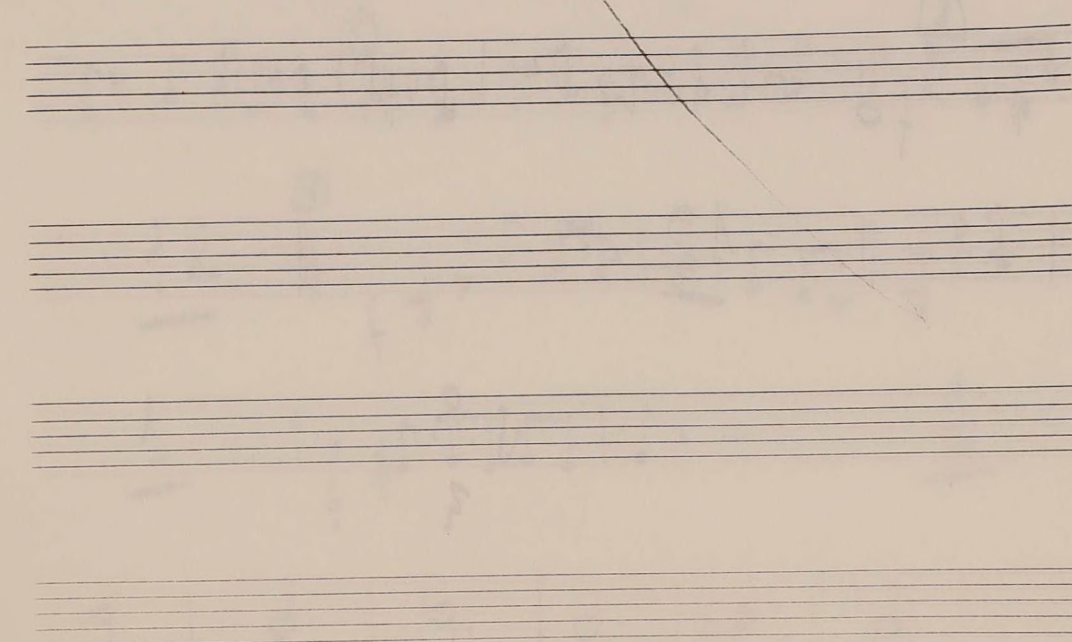
Tiempo



V.R.
3



N^o 11 TACET



X⁽²⁾ No. 11 Tact

TROMBON-II^o

= SONATA. = VIII. = 296 T

ANDANTE. || 9: 3/8

10

15

17

no repeat

6

4

4

p

mf

2

8

no repeat

6

④ 2 || $\frac{3}{4}$ 1 || $\frac{5}{8}$ 1 |

$\frac{3}{4}$ - 5 | $\frac{6}{8}$ 2 | ad lib: |

1 || *all.* || $\frac{9}{8}$

⑤ 7 | *f* | | | | | | | | | | | |

$\frac{6}{8}$ 1 | 6 | 4 || *all.* || $\frac{3}{4}$ 3 |

f | | | | | | | | | | | | $\frac{6}{8}$ 1 | 4 |

2 | 7 | 3 || *all.* || $\frac{4}{4}$ 4 |

9 # 9 | 9 # 9 | 9 # 9 | 0 | #

~~no rall~~

TROMBON-II^o

SONATA - 21^o

Musical staff with treble clef, key signature of three sharps (F#, C#, G#), and a 6/8 time signature. The staff contains a whole note chord (F#, C#, G#) followed by a 4-measure rest and a quarter note G#.

Musical staff with treble clef, key signature of three sharps, and a 6/8 time signature. The staff contains a quarter note G#, followed by eighth notes A# and B, and a quarter note G#.

Musical staff with treble clef, key signature of three sharps, and a 6/8 time signature. The staff contains eighth notes G# and A#, quarter notes B and C#, eighth notes D# and E, quarter notes F# and G#, quarter notes A# and B, quarter notes C# and D#, eighth notes E and F#, quarter notes G# and A#, quarter notes B and C#, eighth notes D# and E, quarter notes F# and G#, quarter notes A# and B, quarter notes C# and D#, eighth notes E and F#, quarter notes G# and A#, quarter notes B and C#. Dynamics include *f* and *cresc.*

Musical staff with treble clef, key signature of three sharps, and a 6/8 time signature. The staff contains quarter notes G# and A#, eighth notes B and C#, eighth notes D# and E, quarter notes F# and G#, quarter notes A# and B, quarter notes C# and D#, quarter notes E and F#, quarter notes G# and A#, quarter notes B and C#.

Musical staff with treble clef, key signature of three sharps, and a 6/8 time signature. The staff contains eighth notes G# and A#, quarter notes B and C#, quarter notes D# and E, quarter notes F# and G#, quarter notes A# and B, quarter notes C# and D#, quarter notes E and F#, quarter notes G# and A#, quarter notes B and C#. Dynamics include *mf*.

Musical staff with treble clef, key signature of three sharps, and a 6/8 time signature. The staff contains quarter notes G# and A#, quarter notes B and C#, quarter notes D# and E, quarter notes F# and G#, quarter notes A# and B, quarter notes C# and D#. Dynamics include *mf*.

Musical staff with treble clef, key signature of three sharps, and a 6/8 time signature. The staff contains a 5-measure rest, a circled 3, a 6-measure rest, eighth notes G# and A#, quarter notes B and C#, quarter notes D# and E, quarter notes F# and G#, quarter notes A# and B, quarter notes C# and D#. Dynamics include *mf*.

Musical staff with treble clef, key signature of three sharps, and a 6/8 time signature. The staff contains quarter notes G# and A#, quarter notes B and C#, quarter notes D# and E, quarter notes F# and G#, quarter notes A# and B, quarter notes C# and D#, quarter notes E and F#, quarter notes G# and A#, quarter notes B and C#. Dynamics include *mf*.

Handwritten musical notation on a five-line staff. The first line contains a melody with notes and rests, including two asterisks (*). The second line contains large numbers 6, 5, and 8, each with a horizontal line underneath it, likely indicating fingerings or measure numbers.

Handwritten musical notation on a five-line staff, starting with a treble clef and a repeat sign. It contains a melody with notes and rests.

Handwritten musical notation on a five-line staff, continuing the melody with notes and rests.

Handwritten musical notation on a five-line staff, including a dynamic marking 'f' (forte) and a circled number 6 above a note.

Handwritten musical notation on a five-line staff, ending with a circled number 12 above the staff.

Handwritten musical notation on a five-line staff, featuring circled numbers 7, 9, and 8 above notes, and a circled number 2 above a note.

Handwritten musical notation on a five-line staff, including a dynamic marking 'f' (forte) and a circled number 16 above the staff.

Handwritten musical notation on a five-line staff, showing a sequence of notes and rests.

Handwritten musical notation on a five-line staff, starting with a single note and ending with a treble clef. The word "rit" is written below the staff.

Introducción *Andante* TROMBÓN-2º

FANDANGO = *agit.*

andante $9:16 \frac{3}{4}$ - | 8 (A) | 4 | *SORD.* | *f* | *s* | *q* | *q* | *s*

| 1 | *s* | *q* | *q* | *s* | | 5 (B) | 7 |

pp

SORD | *p* | *s* | *7* | *s* | | 4 | (C) | 5 *open* - *sin SORD.*

p | *s* | *b* | *b* | *b* | *b* | *#* | *q* | *q* | *#* | *q* | *#* | *q* | *f* | *q* | *q* | *s* | *s*

8 (D) | 6 | *ff* | *d* | *b* | *d* | *d* |

d | *s* | | *q* | *s* | | *d* | *s* | | 2 |

(E) | 7 | *q* | *s* | *s* | | *q* | | *q* | *s* | *#* | *d* |

q | | *q* | *s* | *s* | | *q* | | *q* | *s* | *#* | *d* |

The image shows a page of handwritten musical notation on a page with eight staves. The notation is written in black ink on aged paper. The first staff begins with a treble clef and a key signature of one sharp (F#). The melody consists of eighth and quarter notes, with a circled 'R' above a note in the fourth measure. The second staff continues the melody and includes a dynamic marking 'pp' (pianissimo) and a fermata over a note. The third staff features a dynamic marking 'PESANTE' (heavy) and a fermata over a note. The fourth staff shows a bass clef and some notes, including a double bar line. The remaining four staves are empty.