

BLUE DANUBE WALTZ.

An der schönen blauen Donau

1st Clarinet in C
 Introduktion
 Andantino

Johann Strauß, Op. 314

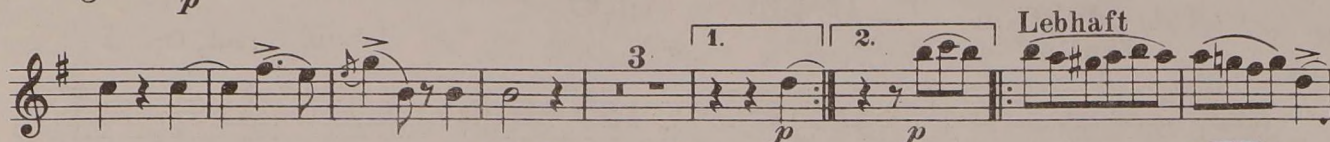
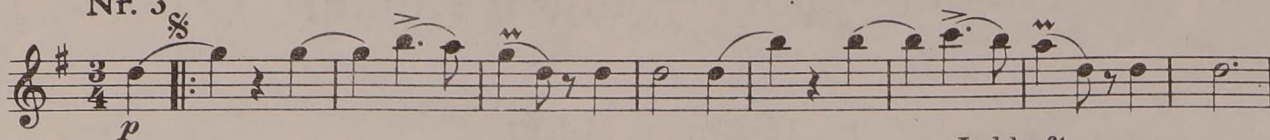
Nr. 1 Walzer

Nr. 2

*) Bei Mitwirkung des Chors fa...

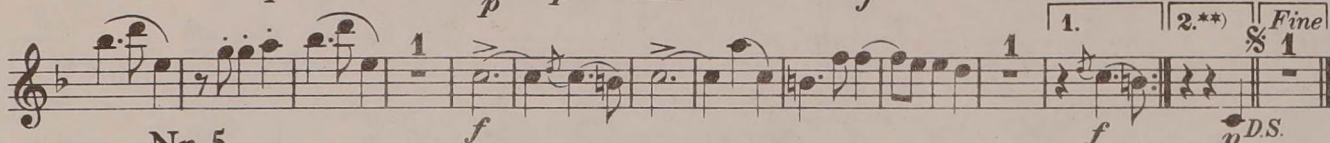
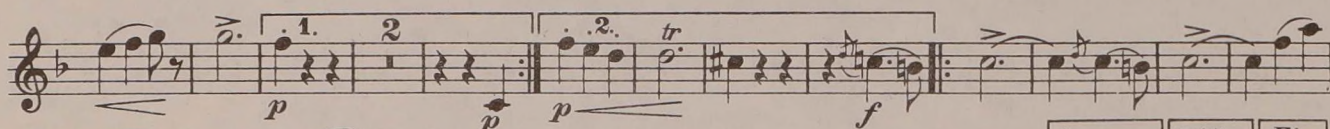
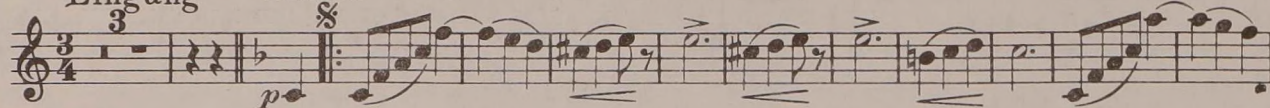
1st Clarinet in C

Nr. 3



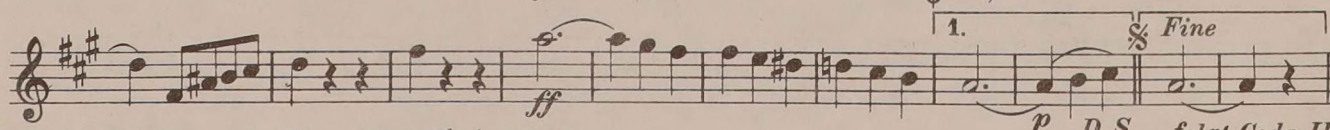
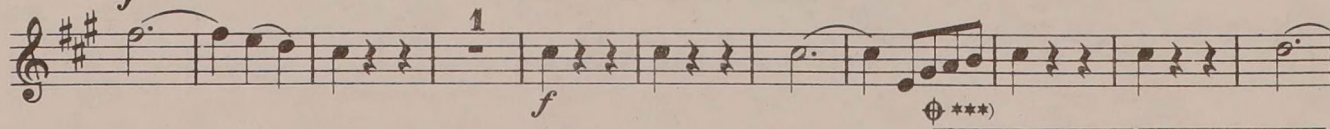
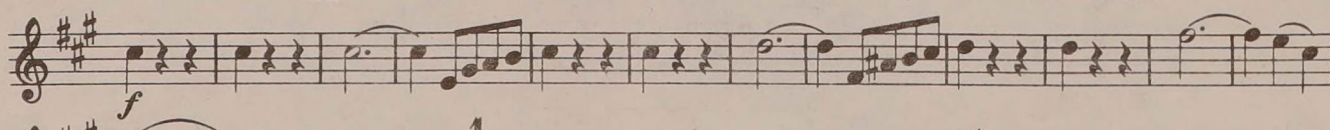
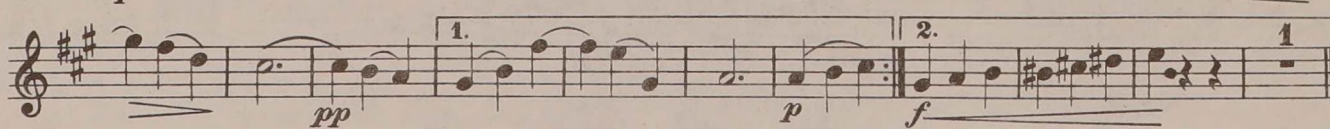
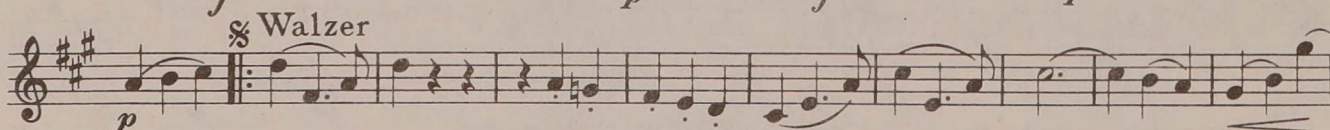
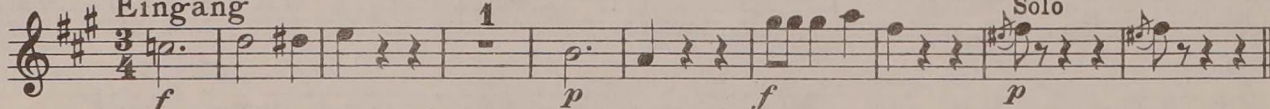
Nr. 4

Eingang Walzer



Nr. 5

Eingang



***) Bei Mitwirkung des Chors fallen 2da und Dal Segno weg

*** Bei Mitwirkung des Chors Sprung von \oplus auf Coda I

p D.S. folgt Coda II

Coda I
f Fine

Coda II
p

mf

f *p*

f *pp*

p

tr *cresc.* *f*

pp

f

ff G.P.

Hr. I *p*

pp *dim.*

cresc. *f*