

Clarinete 8^o

344



Santasia Morisca.

Chari

A handwritten musical score consisting of 13 staves. The notation is in treble clef with a key signature of one flat (B-flat). The score begins with a treble clef and a B-flat key signature. The first staff contains a few notes followed by three measures with a double slash indicating a continuation. The second staff continues with a melodic line. The third staff features a complex rhythmic pattern with many beamed notes and slurs. The fourth and fifth staves continue this intricate melodic and rhythmic development. The sixth staff shows a change in the melodic contour. The seventh staff continues with similar rhythmic complexity. The eighth staff has a circled number '8' above it and ends with a double bar line. The ninth staff continues the melodic line. The tenth staff features a double bar line and a double slash. The eleventh and twelfth staves consist of rhythmic patterns with many beamed notes. The thirteenth staff concludes with a melodic line and a double bar line.

Handwritten musical score on ten staves. The first staff contains a melodic line with eighth notes and a fermata. The second staff has a circled '9' and a melodic line with eighth notes and a sharp sign. The third staff continues the melodic line. The fourth staff has a melodic line with eighth notes and a sharp sign, with 'Vivace' written below. The fifth staff has a melodic line with eighth notes and a sharp sign, with a circled '10' above. The sixth staff has a melodic line with eighth notes. The seventh staff has a melodic line with eighth notes. The eighth staff has a melodic line with eighth notes. The ninth and tenth staves are empty.

This image shows a handwritten musical score consisting of 12 staves. The notation is in a single system, likely for a piano or guitar accompaniment. The score begins with a treble clef and a 9/8 time signature. The first two staves contain rhythmic patterns with slanted lines and rests. The third staff features a melodic line with a circled measure number '(11)' and a fermata. The fourth and fifth staves continue the melodic line with various note values and slurs. The sixth staff includes a 'tr' (trill) marking. The seventh staff shows a melodic line with a fermata. The eighth staff has a circled measure number '(12)'. The ninth staff features a circled measure number '(13)' and a change in time signature to 8/8. The final two staves conclude the piece with melodic lines and rests.

A handwritten musical score consisting of 12 staves. The notation includes various rhythmic values, accidentals, and dynamic markings. The first staff begins with a treble clef and a key signature of one flat. The second staff continues the melodic line. The third staff features a dynamic marking of *pp* and a circled number (14) above the staff. The fourth staff has a dynamic marking of *p*. The fifth staff includes a circled number (10) above the staff. The sixth staff has a circled number (4) above the staff. The seventh staff has a circled number (1) above the staff. The eighth staff has a circled number (2) above the staff. The ninth staff has a dynamic marking of *pp*. The tenth staff has a dynamic marking of *pp*. The eleventh staff has a dynamic marking of *pp*. The twelfth staff has a dynamic marking of *pp*. The score concludes with a double bar line.

Meditacion //

-La-

mod.to $\text{C} \quad 5$

All^o mod.to $\text{C} \quad 2$

(1)

(2)

(3)

(4)

This image shows a page of handwritten musical notation on ten staves. The notation is written in black ink on aged, yellowish paper. The first five staves are in a common time signature (C) and a key signature of one sharp (F#). The sixth staff begins with a new key signature of two sharps (F# and C#) and a common time signature. The notation includes various rhythmic values such as eighth, sixteenth, and thirty-second notes, as well as rests, beams, and slurs. There are several accidentals (sharps and naturals) throughout the piece. A circled number '2' is written below the sixth staff. At the end of the tenth staff, there are the letters '2' and 'B' written below the notes. The handwriting is fluid and characteristic of a composer's draft.

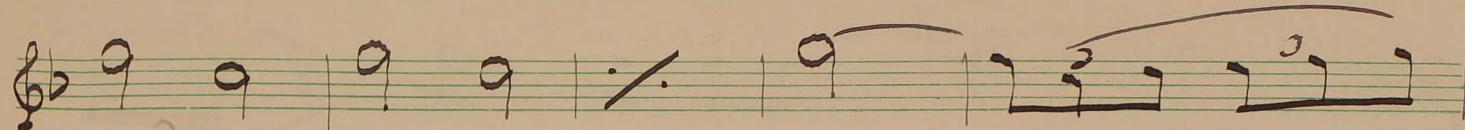
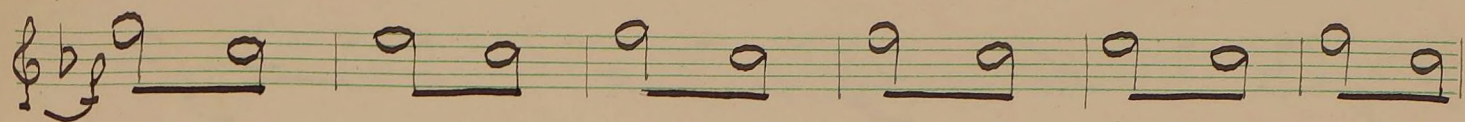
Final.

(2)

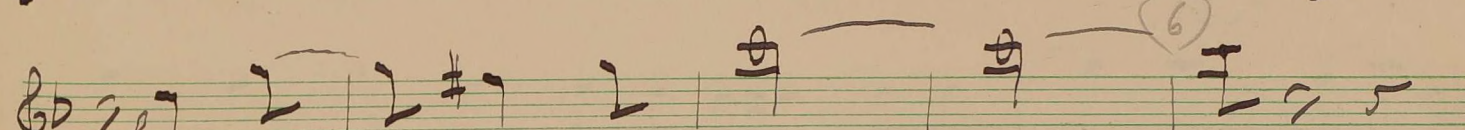
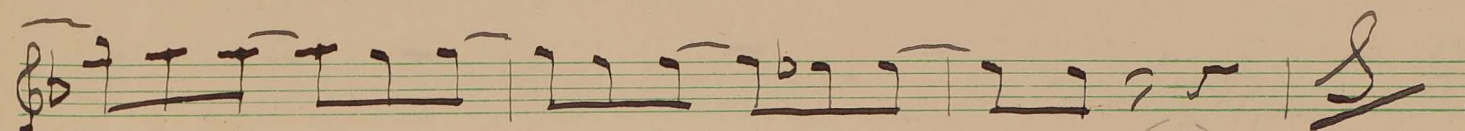
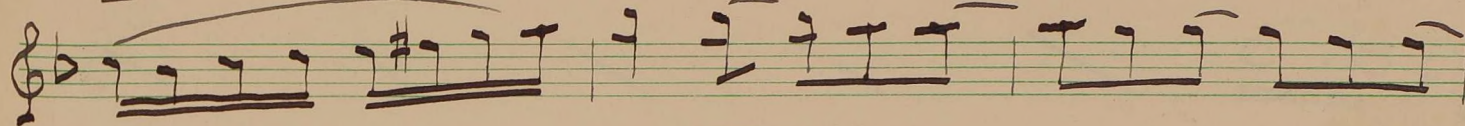
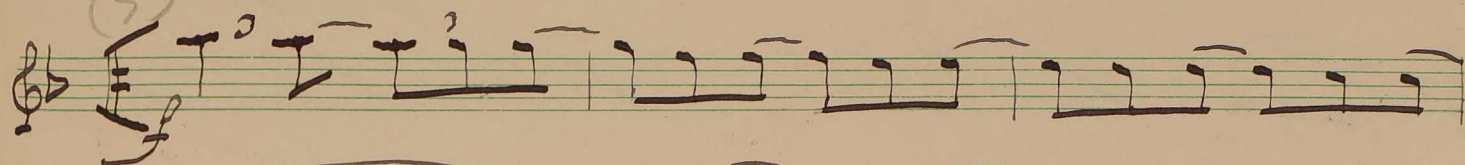
Allo-mo-d-to

Handwritten musical score for guitar, consisting of ten staves. The first staff includes the tempo marking "Allo-mo-d-to" and a guitar-specific instruction. The score features various rhythmic patterns, including sixteenth and thirty-second notes, and rests. There are several circled numbers (2, 4, 1, 2) and a circled letter (S) scattered throughout the notation, likely indicating fingerings or specific techniques. The notation is written in a cursive, handwritten style.

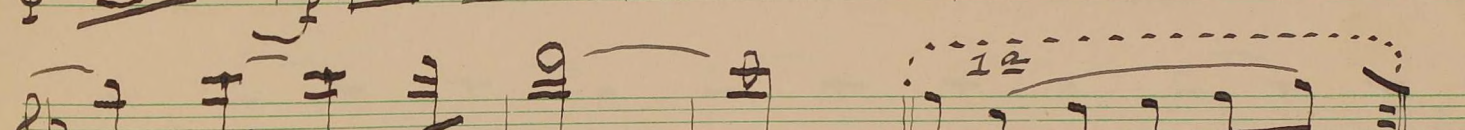
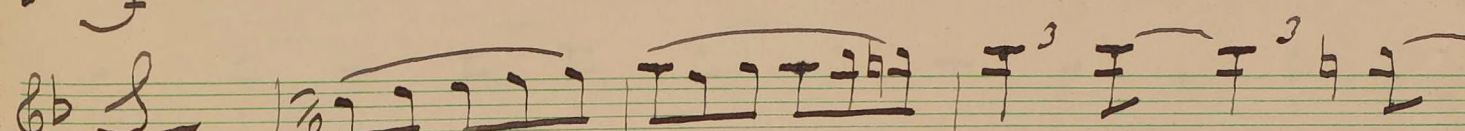
(4)



(5)

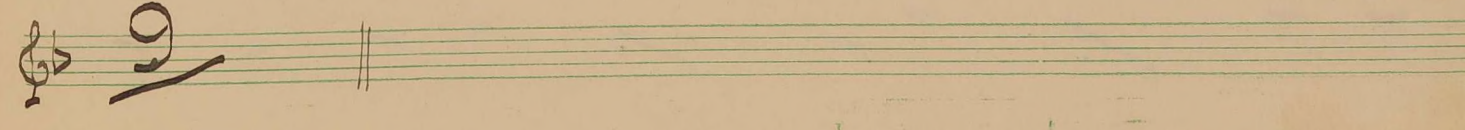
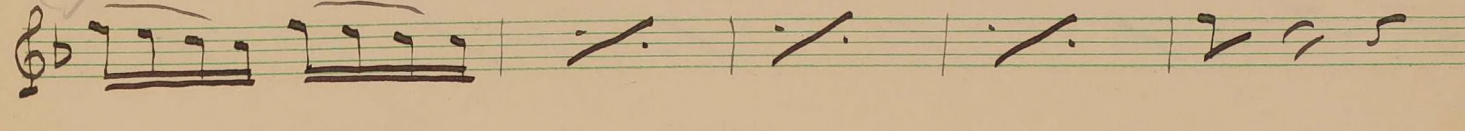


(6)

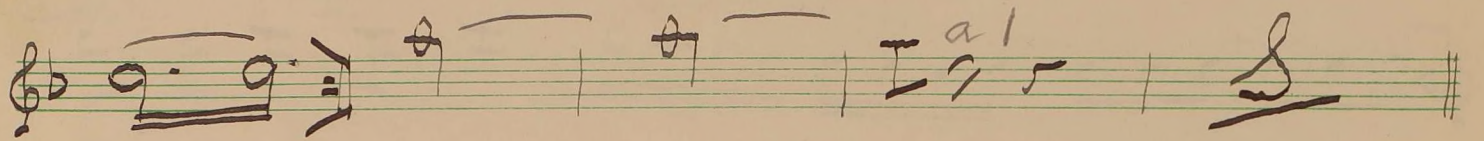
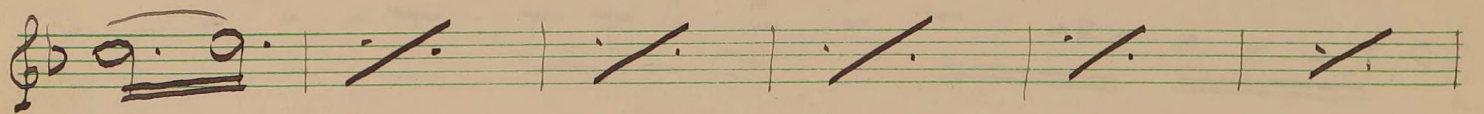
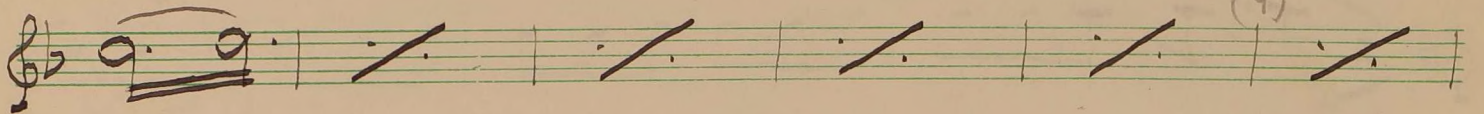
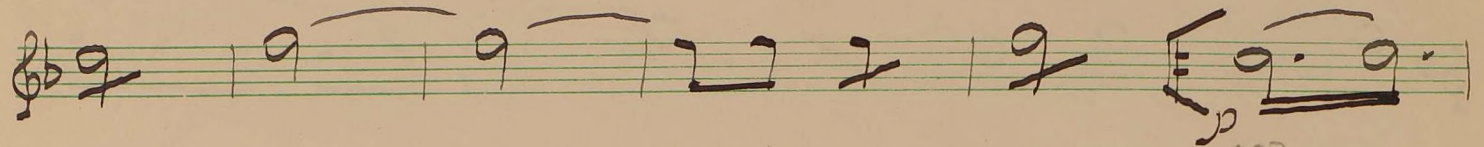
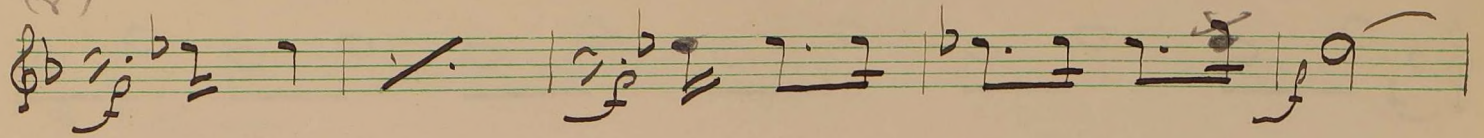


12

(7)



(9)



(9)

(10)

