

1

Viola //

343



La Torre del Oro //

// Gimenez //

Adagio

Handwritten musical score for the Adagio section. It consists of three staves. The first staff has a treble clef, key signature of three sharps (F#, C#, G#), and a 3/4 time signature. It contains four measures of music with notes and rests, including dynamic markings like 'p' and 'f'. The second staff continues the melody with similar notation and a blue 'P' marking. The third staff features a series of slanted lines, possibly indicating a tremolo or a specific performance technique.

All^o

Handwritten musical score for the All^o section. It consists of six staves. The first staff has a treble clef, key signature of one sharp (F#), and a 3/8 time signature. It contains four measures of music. The second and third staves feature a series of slanted lines, likely representing a tremolo. The fourth and fifth staves continue with similar notation. The sixth staff includes a 'pizz' marking above the notes.

Arco

all

ff *Arco*

a tempo

Handwritten musical score for the Arco section. It consists of two staves. The first staff has a treble clef, key signature of one sharp (F#), and a 3/8 time signature. It contains four measures of music with notes and rests, including dynamic markings like 'cres' and 'ff', and performance markings like 'Arco' and 'all'. The second staff continues the melody with similar notation, including a 'pizz' marking and a blue 'p' marking.

Handwritten musical notation on a five-line staff, featuring a key signature of one sharp (F#) and a common time signature (C). The notation includes quarter notes, eighth notes, and rests.

Handwritten musical notation on a five-line staff, continuing the piece. A red 'X' is drawn over the second measure of this staff.

Handwritten musical notation on a five-line staff, showing a sequence of eighth notes and quarter notes.

Handwritten musical notation on a five-line staff, featuring a mix of quarter and eighth notes.

Handwritten musical notation on a five-line staff. The word "arco" is written in blue ink above the staff. The notation includes a double bar line and various note values.

Handwritten musical notation on a five-line staff. The word "pizz" is written in blue ink above the staff. The notation features a series of eighth notes.

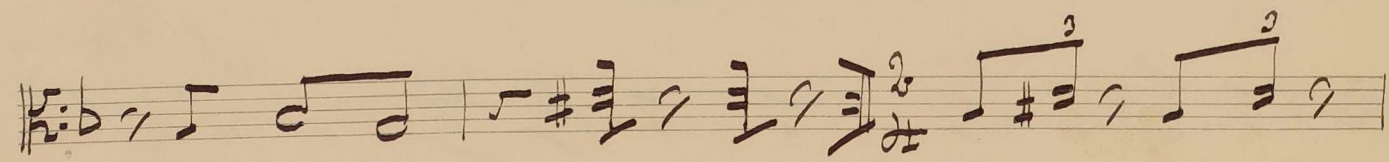
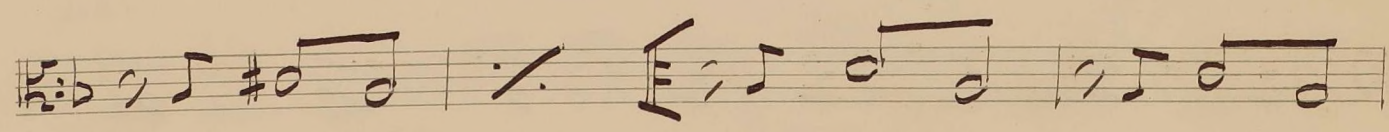
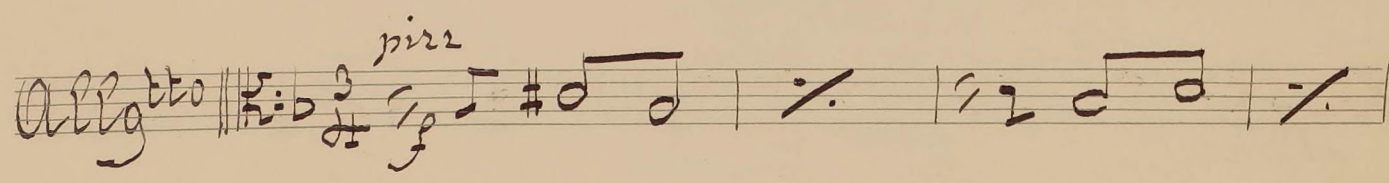
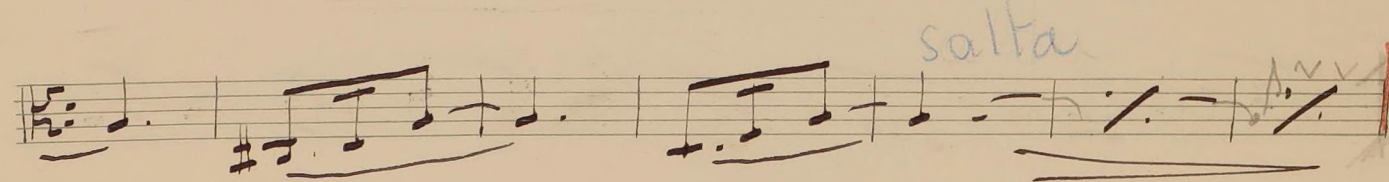
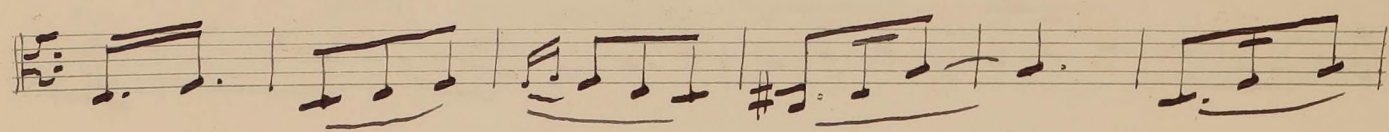
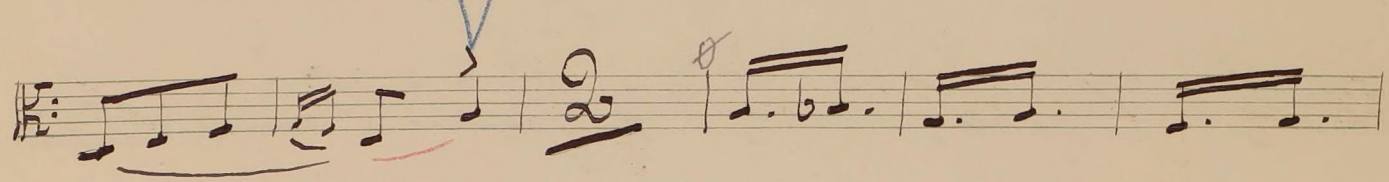
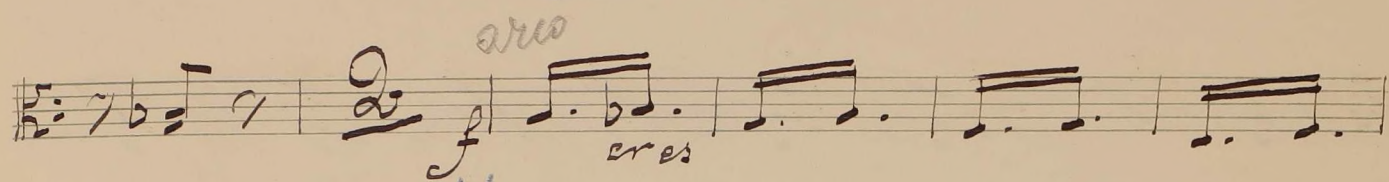
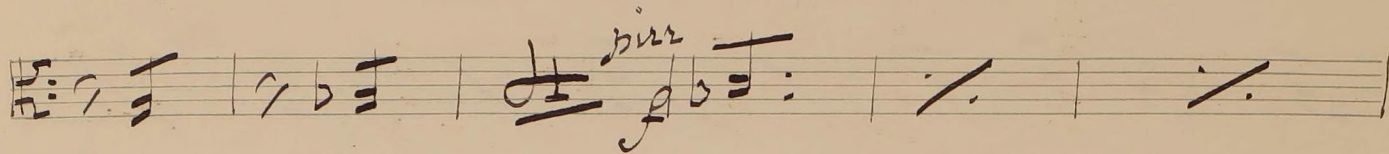
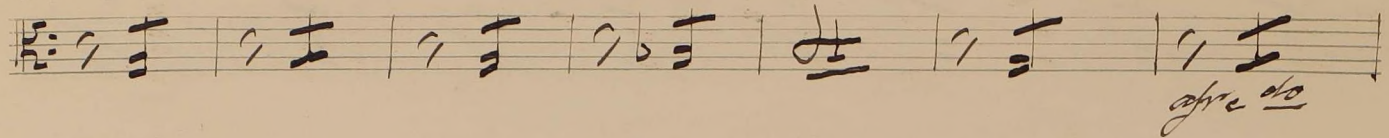
Handwritten musical notation on a five-line staff. The word "Arco" is written in blue ink above the staff. The notation includes a double bar line and a change in note values.

Handwritten musical notation on a five-line staff. The word "rit" is written in blue ink above the staff. Below the staff, the words "a tempo" and "do tpo" are written, with a blue line indicating a tempo change.

Handwritten musical notation on a five-line staff. The word "rit" is written in blue ink above the staff. Below the staff, the word "tempo" is written, with a blue line indicating a tempo change.

Handwritten musical notation on a five-line staff. The word "Meno. a 3." is written in blue ink above the staff. The notation concludes with a double bar line and a large, decorative flourish.

Tempo



Musical staff with treble clef, key signature of one flat (Bb), and 3/4 time signature. The notation includes eighth and sixteenth notes with various articulations and slurs.

Musical staff with bass clef, key signature of one flat (Bb), and 3/4 time signature. The tempo marking *Lento* is present. The notation features chords and single notes, with a red *trio* marking above the staff.

Musical staff with bass clef, key signature of one flat (Bb), and 3/4 time signature. The tempo marking *Andante* is present. The notation includes a half note followed by eighth notes, with a red *trio* marking above the staff.

Musical staff with bass clef, key signature of one flat (Bb), and 3/4 time signature. The tempo marking *Andante* is present. The notation consists of chords, with a red *trio* marking above the staff.

Musical staff with bass clef, key signature of one flat (Bb), and 3/4 time signature. The tempo marking *Andante* is present. The notation consists of chords, with a red *trio* marking above the staff.

Musical staff with bass clef, key signature of one flat (Bb), and 3/4 time signature. The tempo marking *Andante* is present. The notation consists of chords and a short melodic phrase at the end.

Musical staff with bass clef, key signature of one flat (Bb), and 3/4 time signature. The tempo marking *All.* is present. The notation features eighth notes and rests.

Musical staff with bass clef, key signature of one flat (Bb), and 3/4 time signature. The tempo marking *All.* is present. The notation features eighth notes and rests, with a red bracket under the final measure.

Musical staff with bass clef, key signature of one flat (Bb), and 3/4 time signature. The tempo marking *Despacio =* is present. The notation includes a half note followed by eighth notes, with a red *trio* marking above the staff.

Musical staff with bass clef, key signature of one flat (Bb), and 3/4 time signature. The tempo marking *Menos* is present. The notation includes a half note followed by eighth notes, with a red *trio* marking above the staff. A large, decorative flourish is written below the staff.

pesante *Menos*
afredo

Modto

Modto

All' animato

