

Contra-Baquet

Orquesta Sinfónica de Madrid

Núm - 30 -

LE ROUET D' OMPHALE

SAINT-SENS

LE ROUET D'OMPHALE

Poème symphonique.

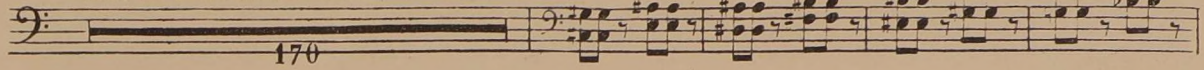
C. SAINT-SAËNS.

op. 31.

CONTREBASSON (ad libitum)

TOUTE REPRODUCTION
PAR L'AUTOGRAFIE OU LA
COPIE SERA RIGOREUSE-
MENT POURSUIVIE.

A. B. C. D. E. F. G. H. I 1^{er} et 2^e B^{ous}



J Contrebasson

P *espressivo e pesante.*

Musical notation for section J, Contrebasson, measures 170-179. The notation is in bass clef with a key signature of two sharps (F# and C#). It features a series of chords and rhythmic patterns.

cresc.

K *f* Le Reste TACET.

Musical notation for section K, Contrebasson, measures 180-181. The notation is in bass clef with a key signature of two sharps (F# and C#). It features a series of chords and rhythmic patterns.