

5/

OBOE 2<sup>do</sup>

Orquesta Sinfonica de Madrid

Núm. 259

CAPRICCIO ESPAGNOL

R. KORSSAKOW





# Capriccio espagnol.

*Droits d'exécution réservés.*

Oboe II. (Corno inglese).

## I. Alborada.

N. Rimsky-Korsakow, Op. 34.

Vivo e strepitoso.

Oboe II.

Musical score for Oboe II part of 'Alborada'. The score is in 2/4 time, key of D major. It begins with a forte (*ff*) dynamic. The first staff contains the initial rhythmic pattern. The second staff continues the melody. The third staff features a section marked 'A' and 'B', with a forte (*ff*) dynamic. The fourth staff continues the melody. The fifth staff features a section marked 'C' and '21', with a first solo ('I. Solo.') indicated. The sixth staff continues the melody, ending with a fermata and the instruction 'attacca'.

## II. Variazioni.

Andante con moto.

Musical score for Violin I and English Horn parts of 'Variazioni'. The score is in 3/8 time, key of D major. The first staff is for Violin I ('Viol. I.') and starts at measure 21. The second staff is for English Horn ('Corno inglese.') and starts at measure 9. The third staff continues the English Horn part. The fourth staff continues the English Horn part. The score includes various dynamics and articulations, such as 'dolce' and 'corno'.

940



Oboe II. (Corno inglese.)

Oboe II.

*f*

*a tempo*

*p*

*f*

*rit* *attacca*

III. Alborada.

Vivo e strepitoso.

*f*

*tr*

*tr*

*tr*

*tr*

*tr*

*H*

12

*ff*

*tr*

*tr*

*tr*

*tr*

*K*

29

*f*

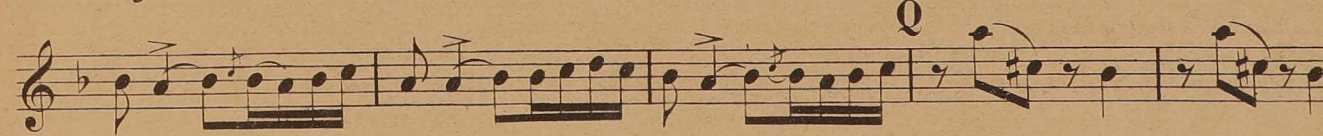
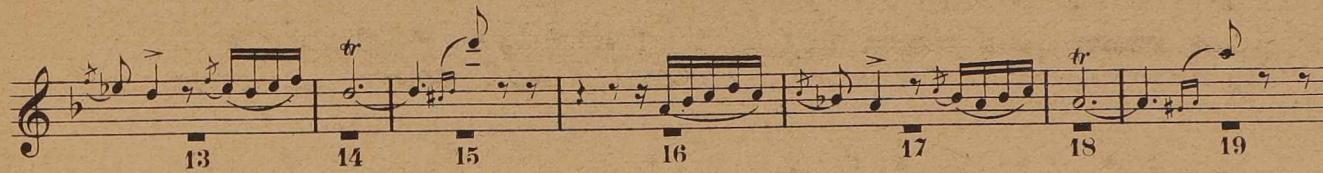
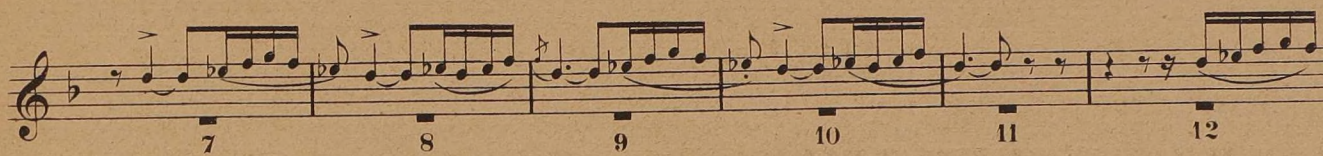
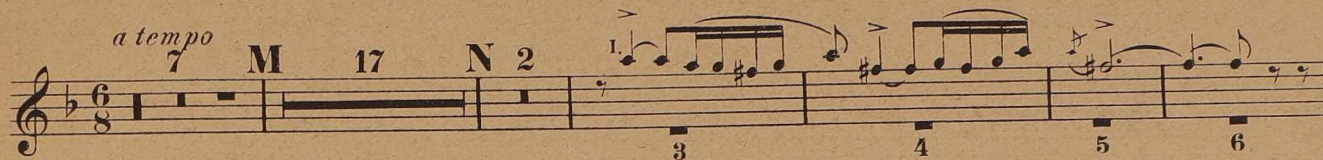
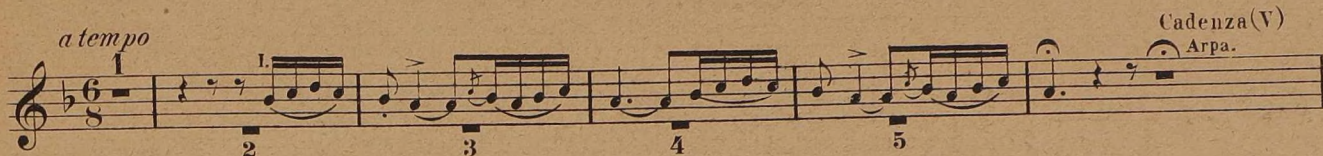
*lunga*  
*attacca*



IV. Scena e Canto gitano.

Allegretto.

quasi Cadenza (I) Cadenza (II) Violino Solo. *a tempo* Cadenza (III) Flauto. Cadenza (IV) Clarinette.





Oboe II. (Corno inglese.)

*animato*

Musical score for Oboe II (Corno inglese) in B-flat major, 2/4 time. The piece is marked *animato*. The score consists of two staves. The first staff begins with a *p* dynamic and features a series of eighth-note patterns. The second staff continues the melody with dynamics ranging from *f* to *p*, ending with a *p cresc.* and an *attacca* instruction.

V. Fandango asturiano.

Musical score for V. Fandango asturiano in A major, 3/4 time. The score is written for Oboe II and includes a Clarinet part starting at measure 23. The piece is marked *ff* and *mf*. The score is divided into measures 1 through 26. Key features include:
 

- Measures 1-12: *ff* dynamic, eighth-note patterns.
- Measures 13-14: First ending (I.), marked *mf*.
- Measures 15-22: *mf* dynamic, eighth-note patterns.
- Measures 23-26: Clarinet part with *tr* (trill) markings, marked *f*.
- Measures 27-32: *p* dynamic, eighth-note patterns, marked *cresc.*.
- Measures 33-38: *fz* dynamic, eighth-note patterns, marked *cresc.*.
- Measures 39-44: *fz* dynamic, eighth-note patterns, marked *f*.
- Measures 45-50: *f* dynamic, eighth-note patterns, marked *tr* and *cresc.*.
- Measures 51-56: *f* dynamic, eighth-note patterns, marked *tr*.
- Measures 57-62: *f* dynamic, eighth-note patterns, marked *tr*.
- Measures 63-68: *f* dynamic, eighth-note patterns, marked *tr*.
- Measures 69-74: *f* dynamic, eighth-note patterns, marked *tr*.
- Measures 75-80: *f* dynamic, eighth-note patterns, marked *tr*.
- Measures 81-86: *f* dynamic, eighth-note patterns, marked *tr*.
- Measures 87-92: *f* dynamic, eighth-note patterns, marked *tr*.
- Measures 93-98: *f* dynamic, eighth-note patterns, marked *tr*.



Oboe II. (Corno inglese.)

Musical notation for the first system of the Oboe II part, consisting of four staves. The first staff has five measures with first finger accents (1) and slurs. The second staff has a 'W' marking above and 'ff' below. The third staff has an 'Xtr' marking above. The fourth staff has a 'tr' marking above and ends with a 2/4 time signature.

Coda.  
Vivo. (Tempo di comincio.)

Musical notation for the Coda section, consisting of seven staves. The first staff has 'ff' below. The second staff has a 'Y' marking above. The third staff has a '4' marking above and 'staccato' above. The fourth staff has a '2' marking above and 'ff' below. The fifth staff has a 'Z' marking above. The sixth staff has 'tr' markings above. The seventh staff has 'tr' markings above.

Presto.

Musical notation for the Presto section, consisting of two staves. The first staff has a 'tr' marking above and a '1' marking above. The second staff has a '2' marking above.