

Oboe 2^o

221

A l'amic Pau Gilson



Dança de Gnoms.

E. Morena.

Allegro.

trump

cresc

cresc

mp

①

mp

②

poco perant

cres

③

cresc

④

cresc

cresc

⑤

cresc

cresc

⑥

cresc

⑦

cresc molto

1 pesante

A musical staff in treble clef with a key signature of one sharp (F#). It contains several measures of music with accents (^) above the notes.

Timpani

A musical staff with notes and rests. A red circle with the number 8 is placed above the second measure.

6

A musical staff with notes and rests. Red circles with the numbers 9 and 10 are placed above the second and third measures respectively.

erese

A musical staff with notes and rests. The word "erese" is written above the staff.

sa

A musical staff with notes and rests. A red circle with the number 11 is placed above the second measure. The word "sa" is written above the first measure.

loco

A musical staff with notes and rests. The word "loco" is written above the staff.

A musical staff with notes and rests.

A musical staff with notes and rests. Red circles with the numbers 12 and 13 are placed above the first and second measures respectively.

Violini

A musical staff with notes and rests. The word "Violini" is written below the staff.

A large, stylized decorative flourish or signature that spans across several empty musical staves.

54 *mf* *crese*

55 *crese*

56 *crese*

57 *crese*

crese molto

58 *crese*

crese

8a *crese*

8a *locob* *crese*

59

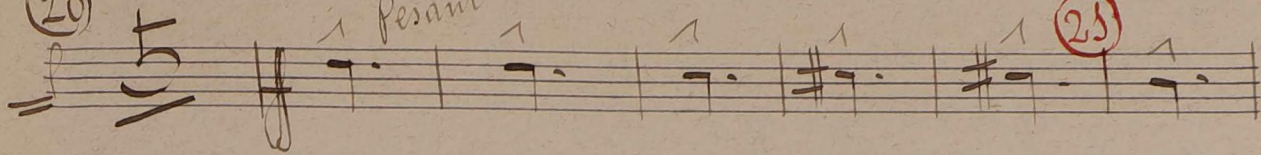
crese

crese *cen*

20

pesant

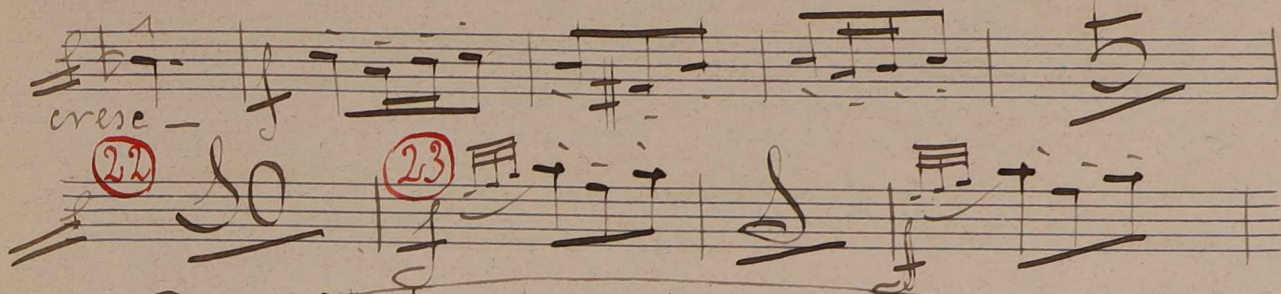
25



crese

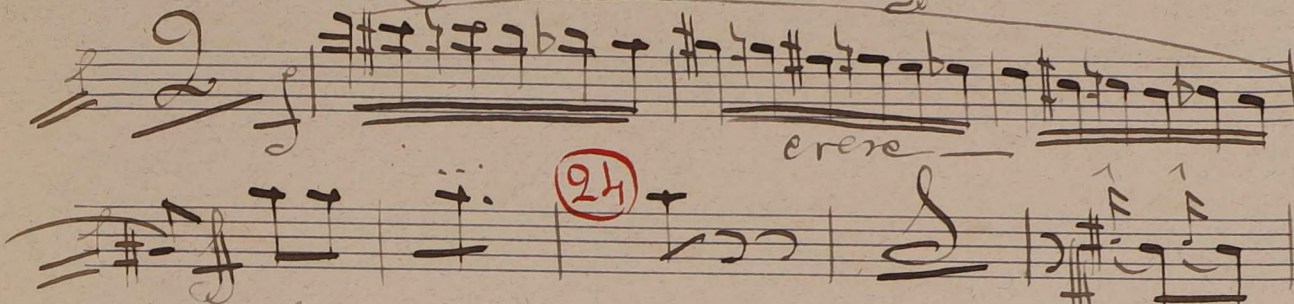
22

23



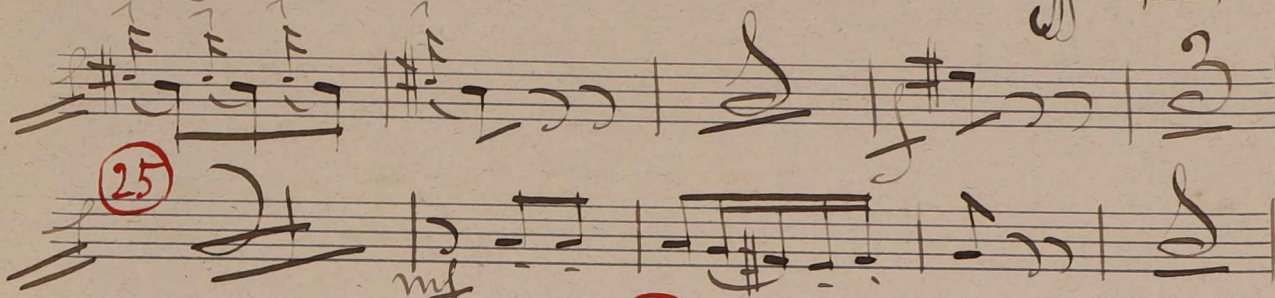
crese

24



25

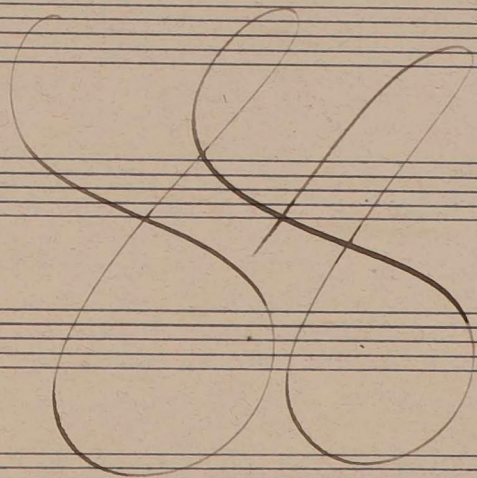
mf



26

27

mf



28 *crece f*

crece

29

crece -

30 *molt cres*

31 *crece*

32 *mai moridos afectando hasta*

el final

33 *crece -*