

5



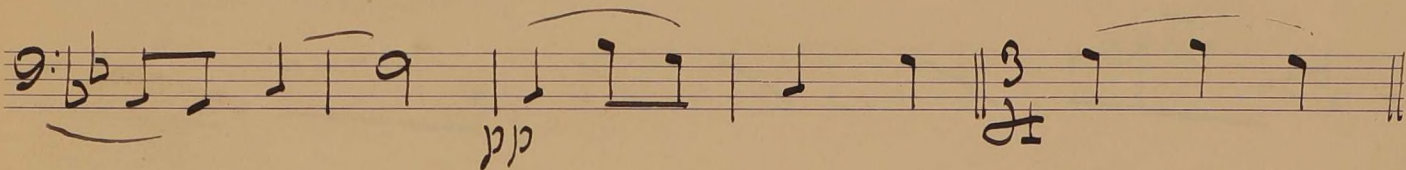
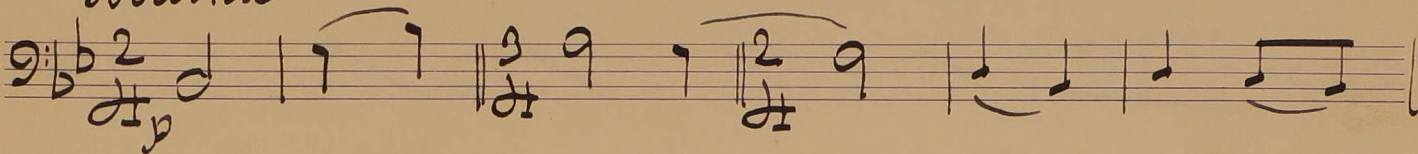
Cello =

14

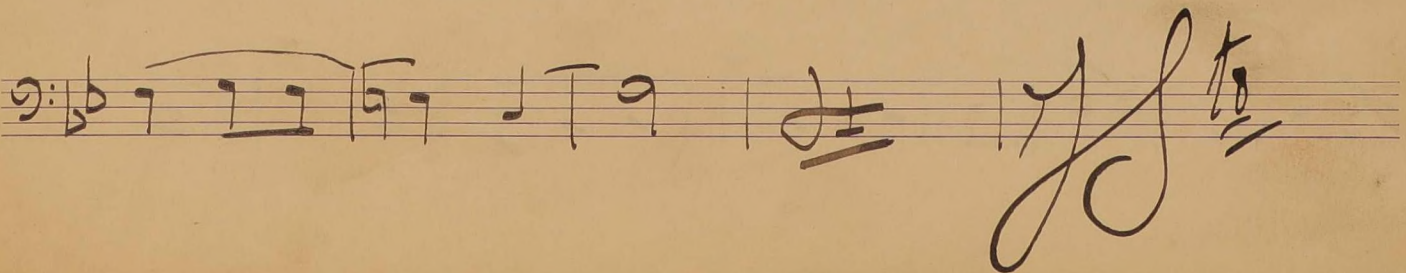
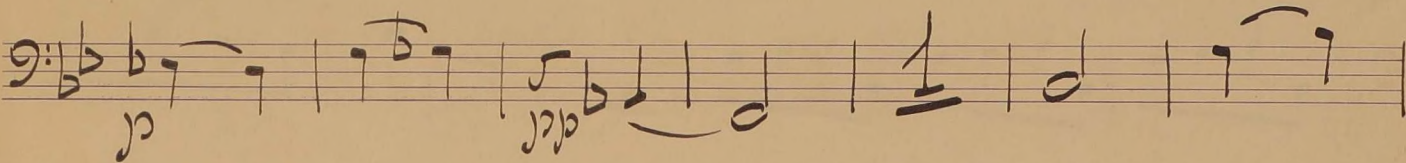
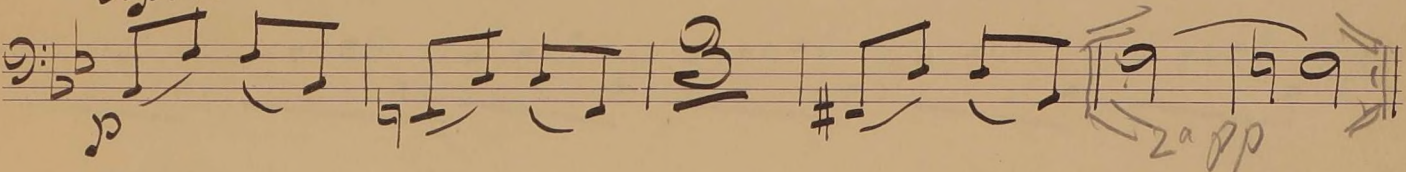
Andante cantabile =

Tschaikowsky =

*Sordina*



*espress*



*ppp* Sempre ben tenuto //

Handwritten musical notation on a single staff, featuring a treble clef, a key signature of one flat (B-flat), and a 3/4 time signature. The music consists of a series of eighth and sixteenth notes, some beamed together, with a final quarter note.

Handwritten musical notation on a single staff, featuring a treble clef, a key signature of one flat, and a 3/4 time signature. The music consists of a series of eighth and sixteenth notes, some beamed together, with a final quarter note. A dynamic marking of *mf* is present below the staff.

Handwritten musical notation on a single staff, featuring a bass clef, a key signature of one flat, and a 3/4 time signature. The music consists of a series of quarter notes. A dynamic marking of *pp* is present below the staff, and the word *dolcissimo* is written above the staff.

Handwritten musical notation on a single staff, featuring a treble clef, a key signature of one flat, and a 3/4 time signature. The music consists of a series of eighth and sixteenth notes, some beamed together. Dynamic markings include *pp* and *sempre pp*. The word *rit.* is written above the staff, and the numbers 1 and 2 are written above the notes.

Handwritten musical notation on a single staff, featuring a treble clef, a key signature of one flat, and a 3/4 time signature. The music consists of a series of eighth notes, some beamed together. The numbers 3, 4, 5, 6, 7, 8, 9, 10, and 11 are written above the notes.

Handwritten musical notation on a single staff, featuring a treble clef, a key signature of one flat, and a 3/4 time signature. The music consists of a series of eighth notes, some beamed together. The numbers 12, 13, 14, 15, 16, 17, 18, 19, and 20 are written above the notes.

Handwritten musical notation on a single staff, featuring a treble clef, a key signature of one flat, and a 3/4 time signature. The music consists of a series of eighth notes, some beamed together. The numbers 21, 22, 23, 24, and 25 are written above the notes. The word *Arco* is written above the staff, and a dynamic marking of *p* is present below the staff.

Handwritten musical notation on a single staff, featuring a bass clef, a key signature of one flat, and a 3/4 time signature. The music consists of a series of quarter notes. A dynamic marking of *pp* is present below the staff.

Handwritten musical notation on a single staff, featuring a treble clef, a key signature of one flat, and a 3/4 time signature. The music consists of a series of eighth and sixteenth notes, some beamed together. A dynamic marking of *p* is present below the staff, and the word *rit.* is written above the staff.

Handwritten musical notation on a single staff, featuring a treble clef, a key signature of one flat, and a 3/4 time signature. The music consists of a series of eighth and sixteenth notes, some beamed together. The word *Arco* is written above the staff, and a dynamic marking of *pp* is present below the staff.