

Breitkopf & Härtel's Orchesterbibliothek.

- 125

No. 451.

**Beethoven**  
**Romanzen**

für Violine.

Op. 40, 50.



Fagott II.

Verlag von  
**BREITKOPF & HÄRTEL**  
in  
**LEIPZIG.**

K. HÄRTEL X.A.

F. WANDERER

Romanze.

3  
*p*

3  
*p* *cresc.* *f* *p* *f*

*ff* *f* 9

*p* 1

## FAGOTTO II.

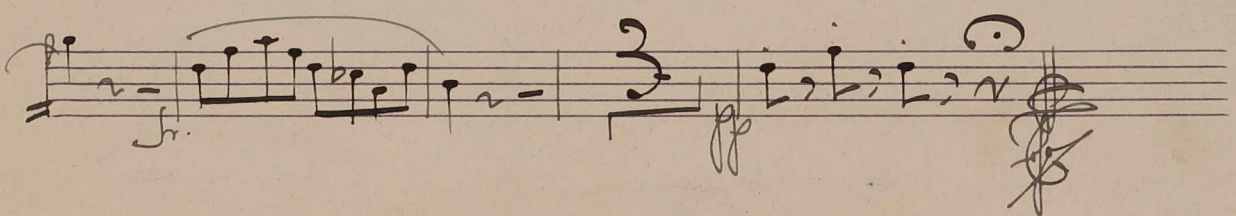
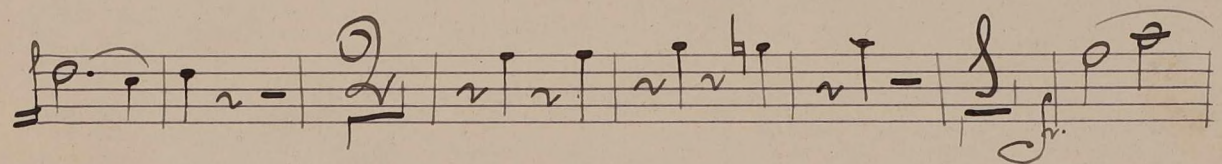
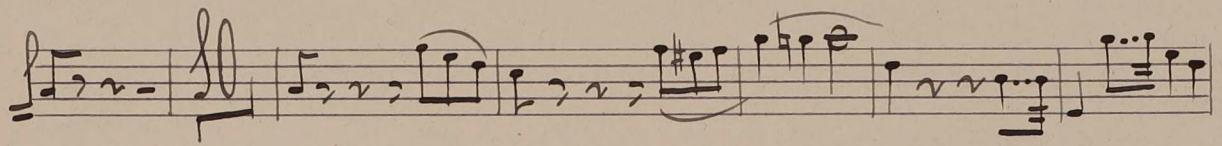
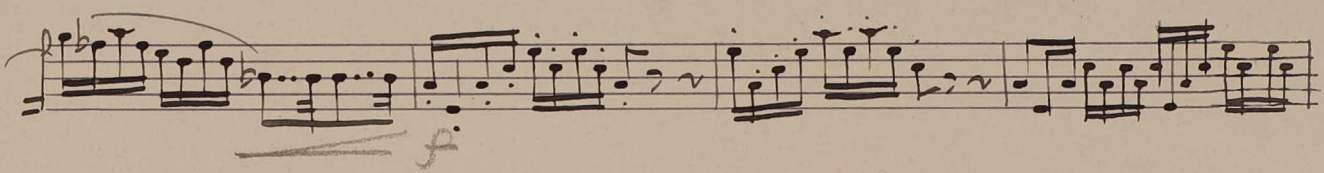
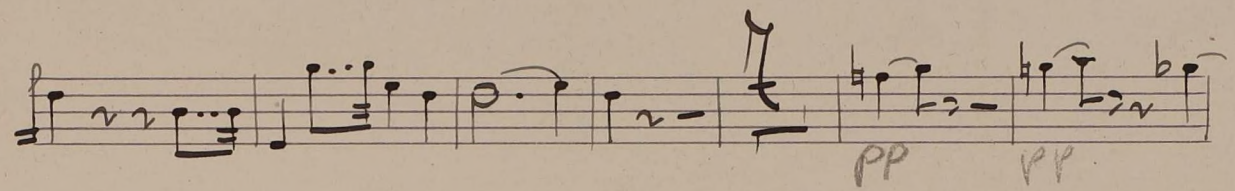
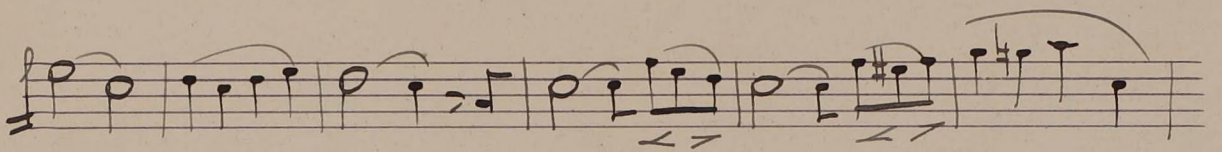
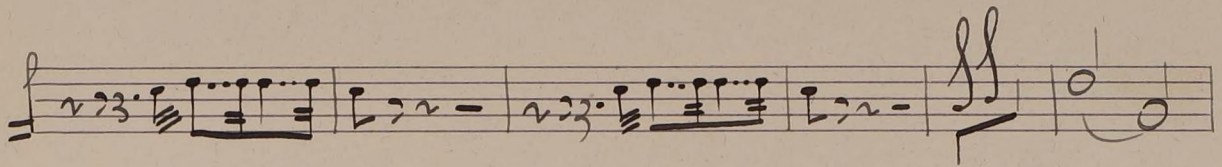
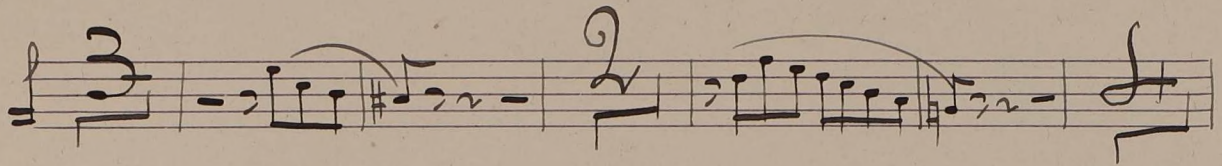
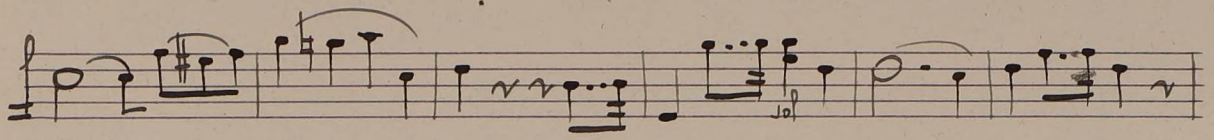
Musical score for Bassoon II, measures 1-29. The score is written in bass clef with a key signature of two sharps (F# and C#). The music features various dynamics and articulations:

- Measure 1: *p* (piano)
- Measure 2: *p* (piano)
- Measure 3: *p* (piano)
- Measure 4: *p* (piano)
- Measure 5: *p* (piano)
- Measure 6: *p* (piano)
- Measure 7: *p* (piano)
- Measure 8: *p* (piano)
- Measure 9: *p* (piano)
- Measure 10: *p* (piano)
- Measure 11: *p* (piano)
- Measure 12: *p* (piano)
- Measure 13: *p* (piano)
- Measure 14: *p* (piano)
- Measure 15: *p* (piano)
- Measure 16: *p* (piano)
- Measure 17: *p* (piano)
- Measure 18: *p* (piano)
- Measure 19: *p* (piano)
- Measure 20: *p* (piano)
- Measure 21: *p* (piano)
- Measure 22: *p* (piano)
- Measure 23: *p* (piano)
- Measure 24: *p* (piano)
- Measure 25: *p* (piano)
- Measure 26: *f* (forte)
- Measure 27: *ff* (fortissimo)
- Measure 28: *sf* (sforzando)
- Measure 29: *ff* (fortissimo)

Measure numbers 3, 25, and 2 are indicated above the staff.

Romanze "en fa" von L. van Beethoven.  
*Adagio cantabile*

Fagot. II<sup>o</sup>



# Breitkopf & Härtel's Orchesterbibliothek.

## Gruppe XII—XVII.

XII. Nr. 701—750. Geistl. Gesangwerke.  
 XIII. „ 751—800. Messen.  
 XIV. „ 801—850. Oratorien.

XV. Nr. 851—950. Konzert-, Gesang- und  
 Dram. Werke.  
 XVI. „ 951—1000. Arien u. Lieder m. Orch.

XVII. Nr. 1001—1050. Konzert-, Gesang- und  
 Dram. Werke.

Die Stimmen werden in beliebiger Anzahl abgegeben. St. = Stimmen. H. = Hefte. Preis jedes Heftes 30 Pfg.

### Geistliche Gesangwerke.

#### Gruppe XII. Nr. 701—750.

Orgelstimme je M 1.50, mit + M 3.—

Nr.	St.	H.
701/2	14	13
703	18	18
704	25	25
705/6	26	26
707	15	15
708	18	18
710	6	6
711	11	11
712/13	20	20
714	24	24
715	23	23
716	24	24
717	15	14
718	17	16
719	21	20
720	23	22
721/22	24	23
723	21	20
724	23	22
725	18	17
726	17	16
727	12	12
728	9	9
729	10	10
730	4	4
731	6	5
732	4	4
733	2	2
734	21	20
735	23	23
736	23	23
737	22	22
738	31	31
739	6	6
740	18	18
741	21	21
742	24	24
743	6	6
744	11	11
745	4	4
746	2	2
747	9	9
748	29	29

### Messen.

#### Gruppe XIII. Nr. 751—800.

Nr.	St.	H.
751/52	30	30
753	18	17
754/55	25	25
756	25	25
757/58	25	25
759	24	24
760/61	17	17
762	4	4
763	5	4
764	5	4
765	7	7
766	7	7
767	4	4
768	21	20
769/70	22	22
771	21	21
772/73	19	19
774	6	6
775	15	15

### Oratorien.

#### Gruppe XIV. Nr. 801—850.

Klavierstimmen je M 1.50, mit + bezeichnet je M 3.—

Nr.	St.	H.
801/3	25	25
804/5	25	25
806/8	21	20
809/11	21	20
812/14	25	24
815/17	25	24
818	21	20
819/21	25	24
822/24	31	28
825/27	25	25
831/34	31	29
835/38	22	22
839/41	21	21

### Konzert-, Gesang- und Dramatische Werke.

#### Gruppe XV. Nr. 851—950.

Klavierstimme je M 1.50, mit + bezeichnet je M 3.—

Nr.	St.	H.
851	30	30
852	20	19
853/54	28	26
855	26	24
856/57	26	24
858	4	4
859	6	6
860	26	25
861	20	19
862	18	18
863	24	24
864/65	27	27
866	18	17
867	20	20
868	25	25
869/70	29	28
871	22	22
872/73	27	26
874	24	24
875	23	23
876	30	30
877/79	26	25
880/82	27	25
883	23	22
884	20	20
885	24	23
886	19	19
887	21	20
888	26	26
889/91	28	27
892	30	30
893	24	24
894	25	25
895	23	23
896/97	23	22
898/99	22	21
900/1	24	23
902	14	13
903	21	21
904/5	19	19
906	25	24
907/8	22	21
909/10	25	24
911/12	24	22
913/15	40	38
916/17	24	24
918/19	26	24
920/21	26	25
922/23	26	25
924	23	22
925	26	25

Nr.	St.	H.
926	28	28
927	20	20
928/30	29	28
931	22	22
932	19	19
933	23	23
934/35	31	29
936	28	28
937	26	26
938	26	26
939	22	22
940	25	25
941	26	26
942/44	23	21
945	25	25
946	27	26
947	23	23
948	28	28
949	12	12
950	12	12

### Gruppe XVII. Nr. 1001—1050.

Nr.	St.	H.
1001/3	26	26
1005/6	33	31
1007	20	20
1008/9	26	25
1010	21	21
1011	20	20
1012/13	26	26
1014	16	15
1015	28	28
1016	12	12
1017	29	29

### Arien und Lieder mit Orchester.

#### Gruppe XVI. Nr. 951—1000.

Klavierstimme je M 1.50. Violinstimme je M 1.—

Nr.	St.	H.
951	12	11
952	10	10
953	11	11
954	16	15
955	18	18
956	27	25
957	23	23
958	17	16
959	12	11
960	12	11
961	12	11
962	12	11
963	11	10
964	11	10
965	11	10
966	9	8
967	9	8
968	11	10
969	9	8
970	15	14
971	13	12
972	12	11
973	11	10
974	16	15
975	22	21
976	16	15
977	18	18
978	17	17
979	27	27
980	24	23

