

El Oso y el Hadrón Director

Lasodoble "Coreros y Flajas"

Mro. Guerrero (

Lasodoble

Handwritten musical score for the first system. It consists of a vocal line on a single staff and piano accompaniment on two staves. The piano part features chords and rhythmic patterns. The vocal line has some rests and notes.

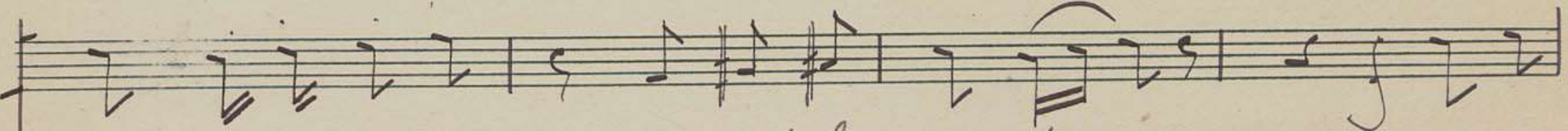
Handwritten musical score for the second system. It includes a vocal line with lyrics and piano accompaniment. The lyrics are: "Ellos Los chris La Du". The piano accompaniment continues with chords and rhythmic patterns.

Handwritten musical score for the third system. It includes a vocal line with lyrics and piano accompaniment. The lyrics are: "pe-ros de rumbo van a la pla-za que el se- que se ma no la ya es ta re zan-do - pues el". The piano accompaniment continues with chords and rhythmic patterns.

Ellos



ñor Pe-pe Hi-lló va-to-re-ar y las
to roba sa bi-do al re don del y sus



ma jas sus pi ran cy ando es- pa da con es
pi ran por e-lla los pe tri me tres y los



Ellos



to- que y mule-to sa lea ma-tar Se
ma- jas la di cen ¿ Quien fue ra el Se



SOCIEDAD GENERAL DE AUTORES DE ESPAÑA. LIBROS

- nor Don Jo-se Del-ga do que le mi rantee-se to - ro no-
 no Don Jo-se Del-ga do no me brindee-se to - ro to

se a tan con-fi-a do ten gaus-te mas pre-cau-cion se
 re-e mas re-po-sa do que le va a co-ger aus-te se

nor Don Jo-se Del-ga do ve a co mo le re-ci-be se
 nor Don Jo-se Del-ga do no se jue guenta la vi da se

ñor Don Jo se Del- ga-do re pi te mi co ra Jon
 ñor Don Jo se Del- ga-do que su fro por su mer- ca

Toda
 Son las

com pa - ni - lli tas se mi ca - le sa

COLECCION NACIONAL DE AUTORES DE LA REPUBLICA ARGENTINA

eres - ce - so

com - pa - nas que re pi can con ma - le -

gri - a cuando voy a los to - ros

con mi ma no la y en re - do mis mi

ra - sal en su man ti - lla ^{1a} De

tras del a - ba ni co - de mil co - lo - res se


jun tan los re. quie - bros - y los sus - pi ros

ellos

cuando con mi mano la voy a los



to ras a ver las a rro-gan-cias



Se Pe-pe Hi- lo

ti bla



SOCIETAT GENERAL DE ESPAÑA-LIRICOS
SOCIETAT GENERAL DE ALTORES DE ESPAÑA-LIRICOS
SOCIETAT GENERAL DE VULGICOS

SOCIEDAD GENERAL DE AUTORES DE ESPAÑA LIBROS

Handwritten musical notation for the first system, including a treble clef, a key signature of one sharp (F#), and a 3/4 time signature. The notation consists of a single melodic line with various rhythmic values and a triplet of eighth notes.

Handwritten musical notation for the second system, featuring a grand staff with treble and bass clefs. The music includes complex chordal textures and melodic lines.

Todal

cuando con mi ma - no - la voy a los to - ros

Handwritten musical notation for the third system, including a vocal line with lyrics and a piano accompaniment. The lyrics are "cuando con mi ma - no - la voy a los to - ros". The notation includes a treble clef, a key signature of one sharp, and a 3/4 time signature.

a ver las arro-gan-cias de Pe-pe

Handwritten musical notation for the second system, continuing the piano accompaniment.

Gloria

Handwritten musical notation for the fourth system, continuing the piano accompaniment.

ga loco