

La Blanca Doble

de Spungar

40
31 7

Final de la Obra

El domine, Blanquita y toda la Compañía

Lento

Handwritten musical notation for the beginning of the piece. It features a vocal line in treble clef and piano accompaniment in bass clef. The tempo is marked 'Lento'. The key signature has one sharp (F#) and the time signature is 2/4. The piano part includes chords and melodic lines with slurs and accents.

Salen chicas

(a 2)

Handwritten musical notation for the entrance of the girls. It features a vocal line in treble clef and piano accompaniment in bass clef. The tempo is 'Lento'. The key signature has one sharp (F#) and the time signature is 2/4. The piano part includes chords and melodic lines with slurs and accents. The vocal line has a '1a' marking.

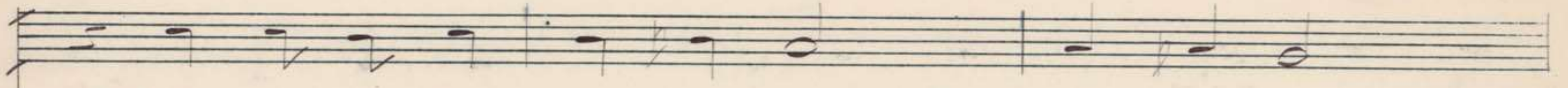
8 Soplos

Blan-ca Blan-ca do-ble

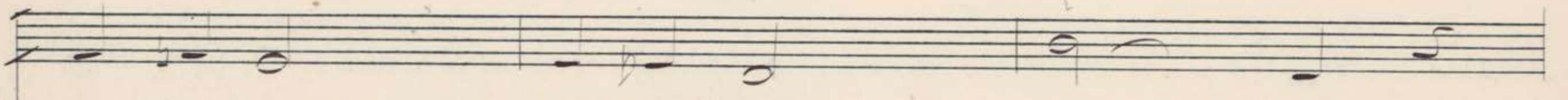
Handwritten musical notation for the 8 soplos. It features a vocal line in treble clef and piano accompaniment in bass clef. The tempo is 'Lento'. The key signature has one sharp (F#) and the time signature is 2/4. The piano part includes chords and melodic lines with slurs and accents. The vocal line has a '2a' marking.

mf

Handwritten musical notation for the final part of the piece. It features a vocal line in treble clef and piano accompaniment in bass clef. The tempo is 'Lento'. The key signature has one sharp (F#) and the time signature is 2/4. The piano part includes chords and melodic lines with slurs and accents. The vocal line has a 'mf' marking.



su jue-go te do-mi-nò De-bes tû



ex-cu-sar el ju-gar Blan-ca



Blan-ca do-ble con e-lla no



SECRETARIA GENERAL DE AUTODRO DE LODANA JORDAN