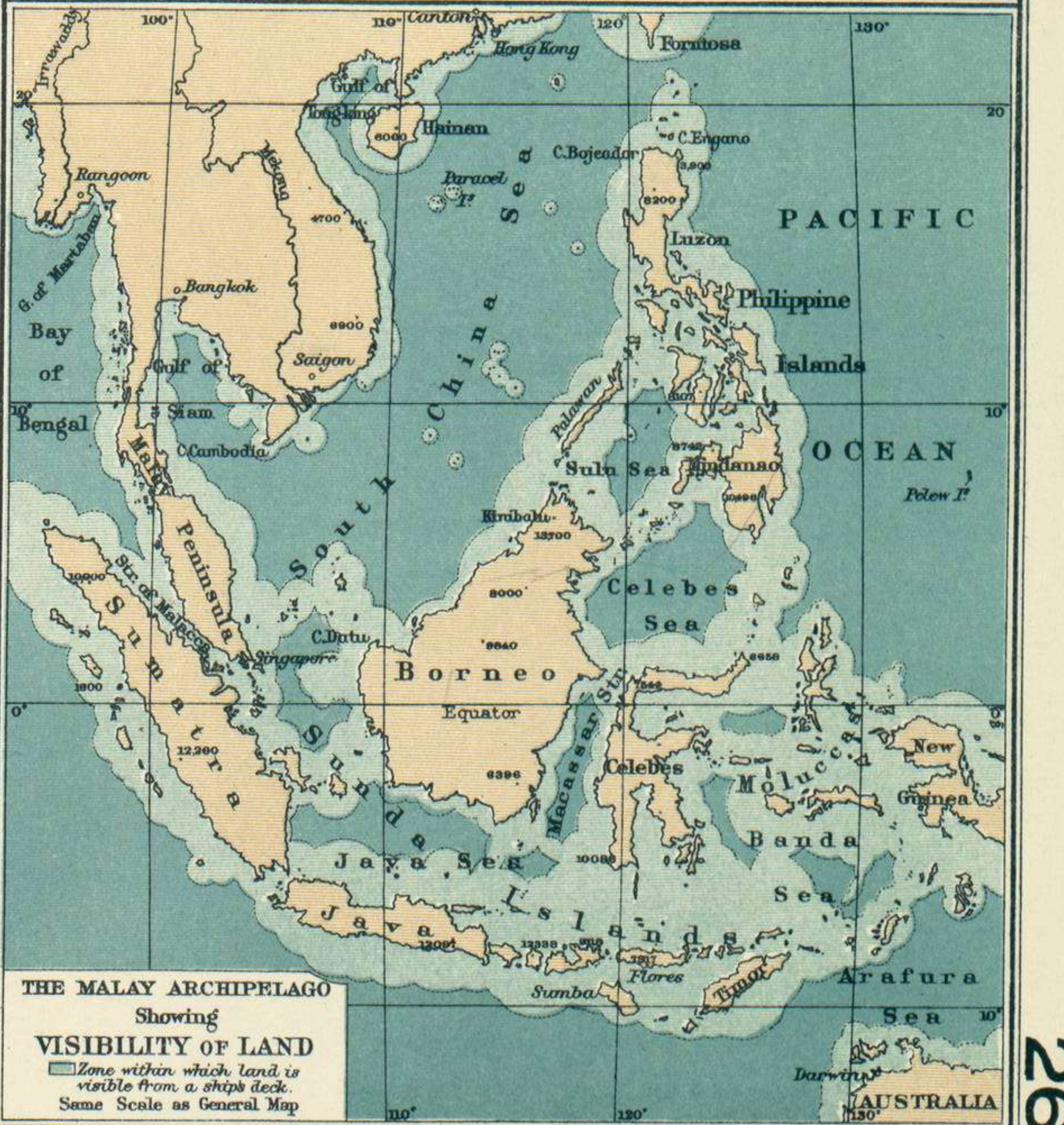
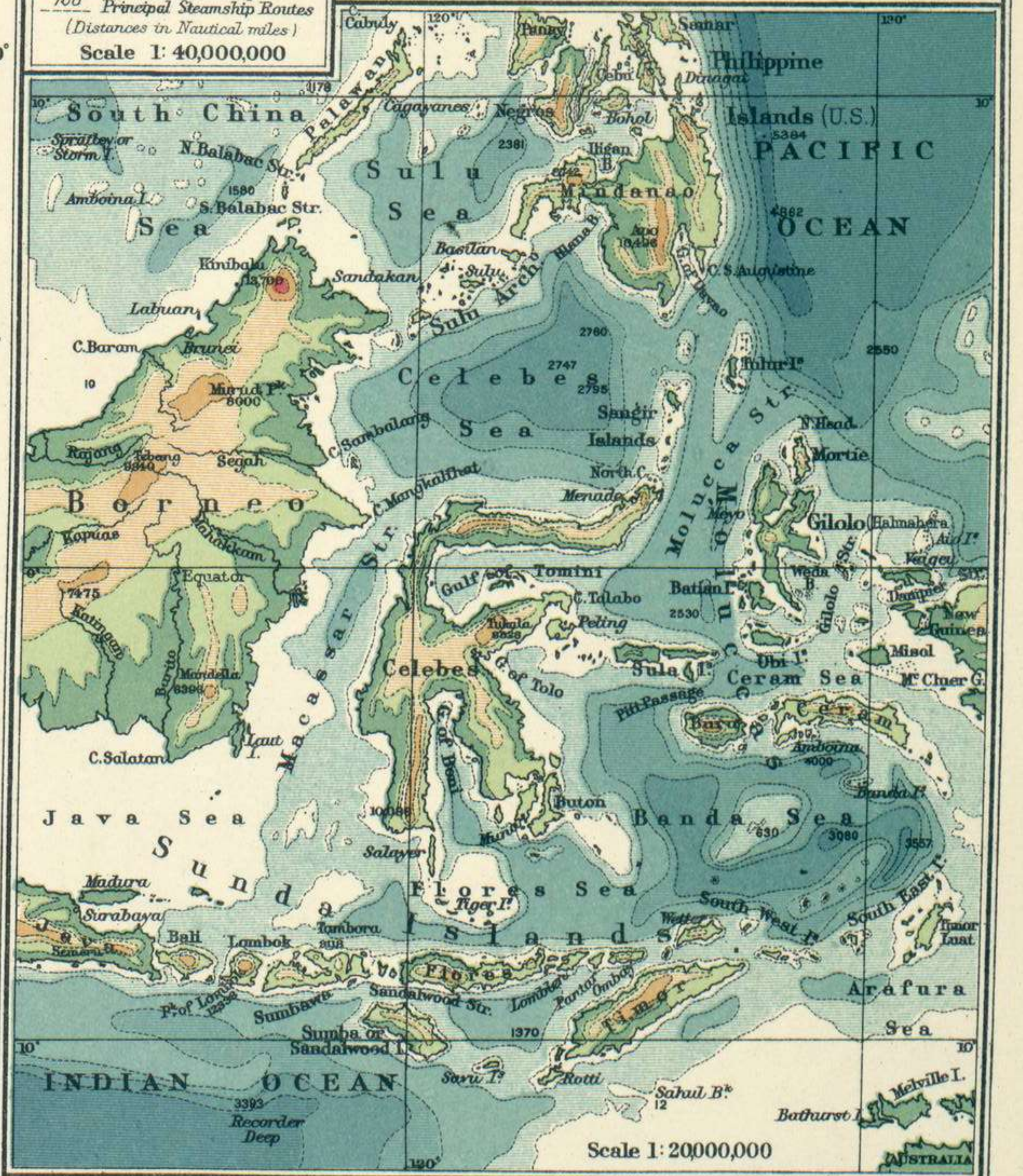
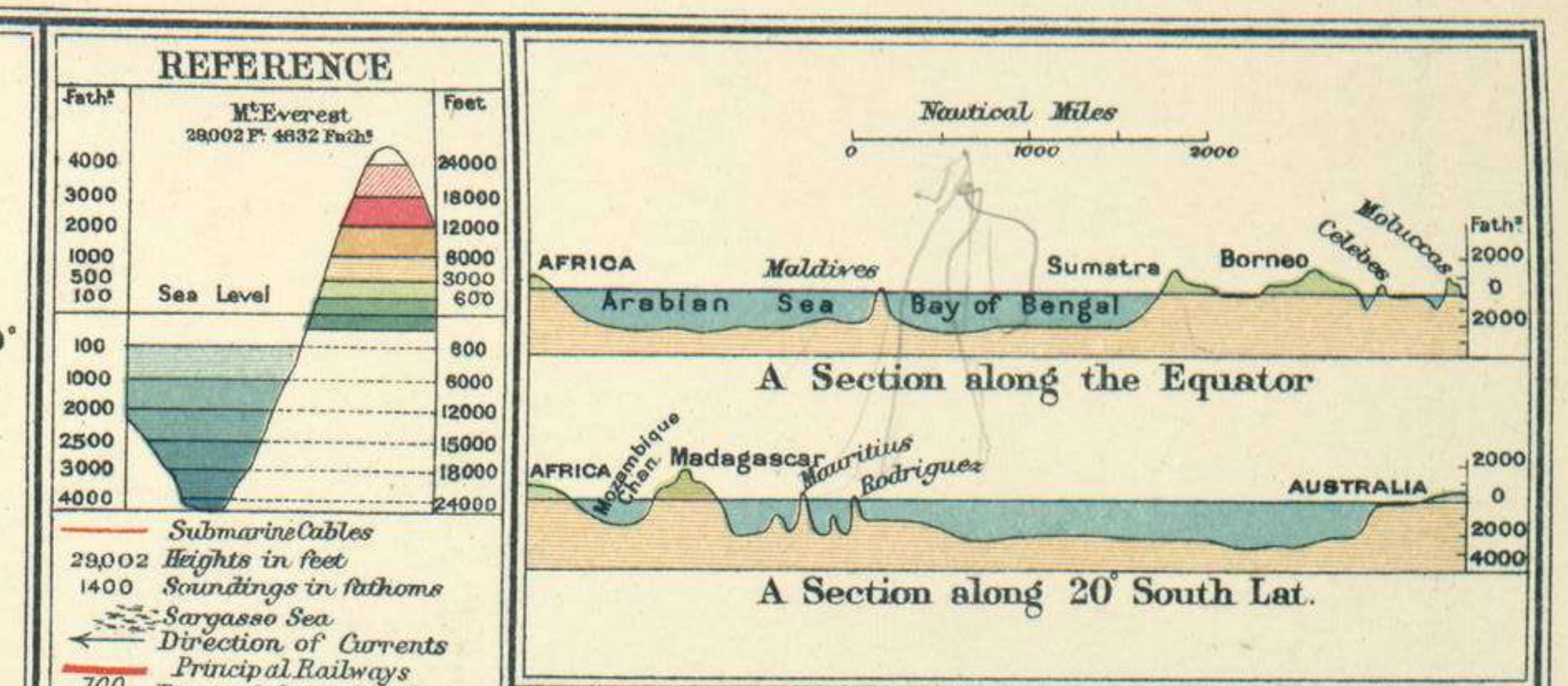
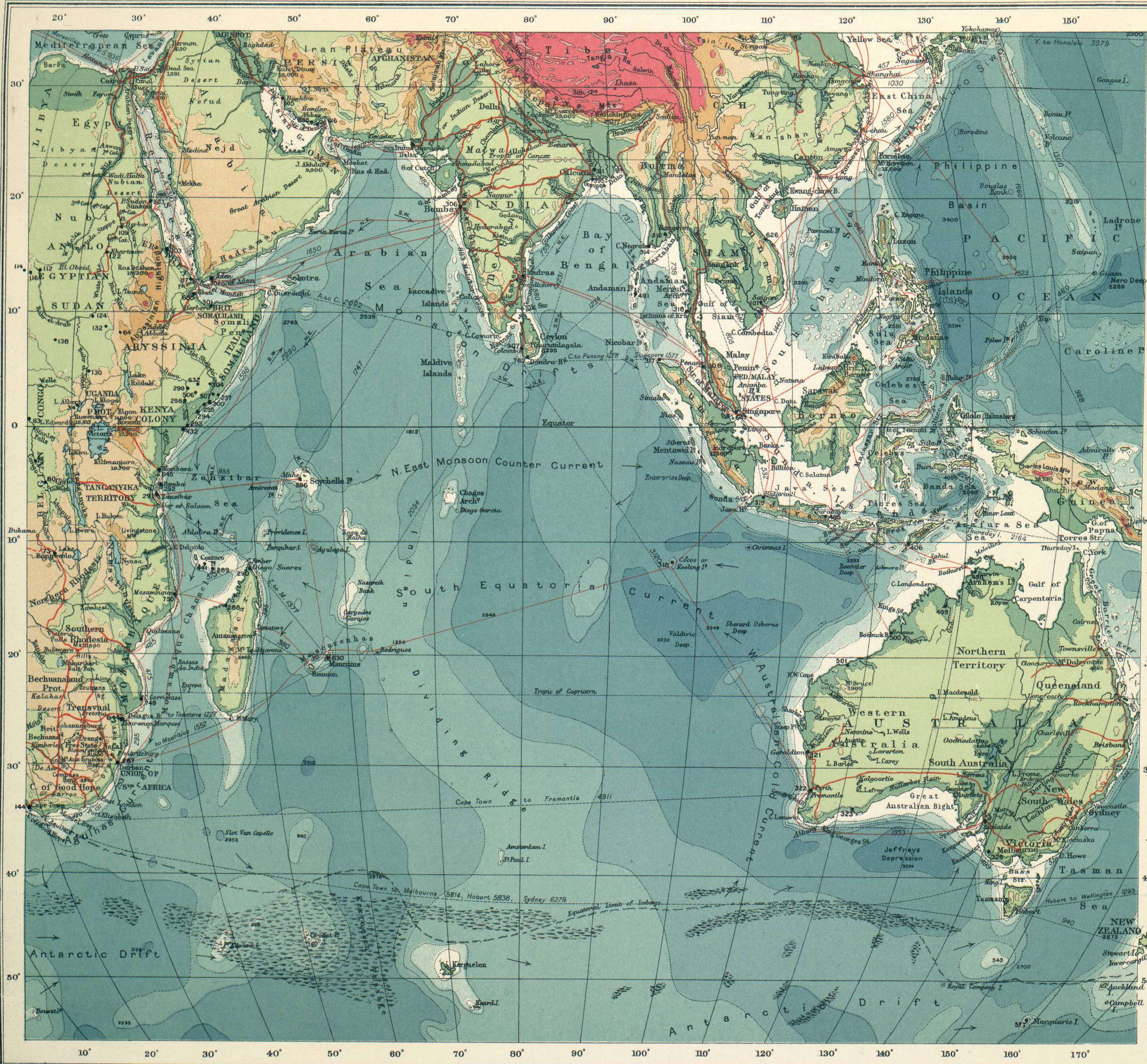


THE INDIAN OCEAN—CABLES AND WIRELESS STATIONS



George Philip & Son Ltd. • Wireless Stations open to Public Service. ■ High Power Wireless Stations open to Public Service. Oiling Stations shown by a red circle and underlined. The numbers to Wireless Stations upon the Map refer to the List on page 8 of the Supplementary Tables. For Wireless Stations in the Pacific, see Plate 27. The London Geographical Institute.