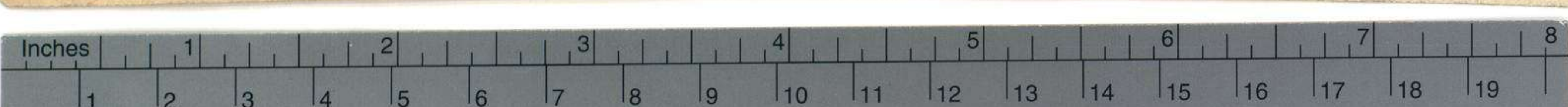
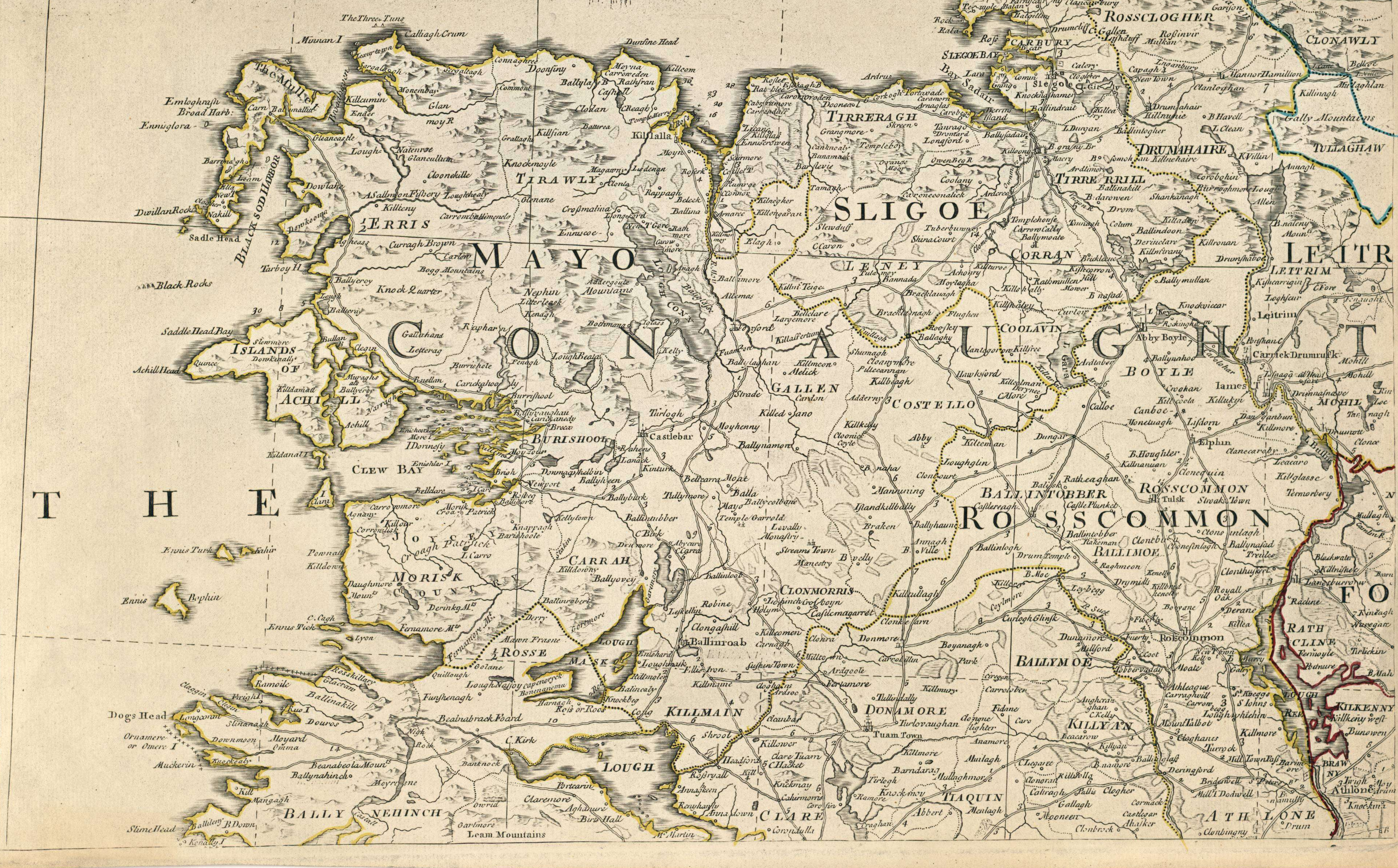
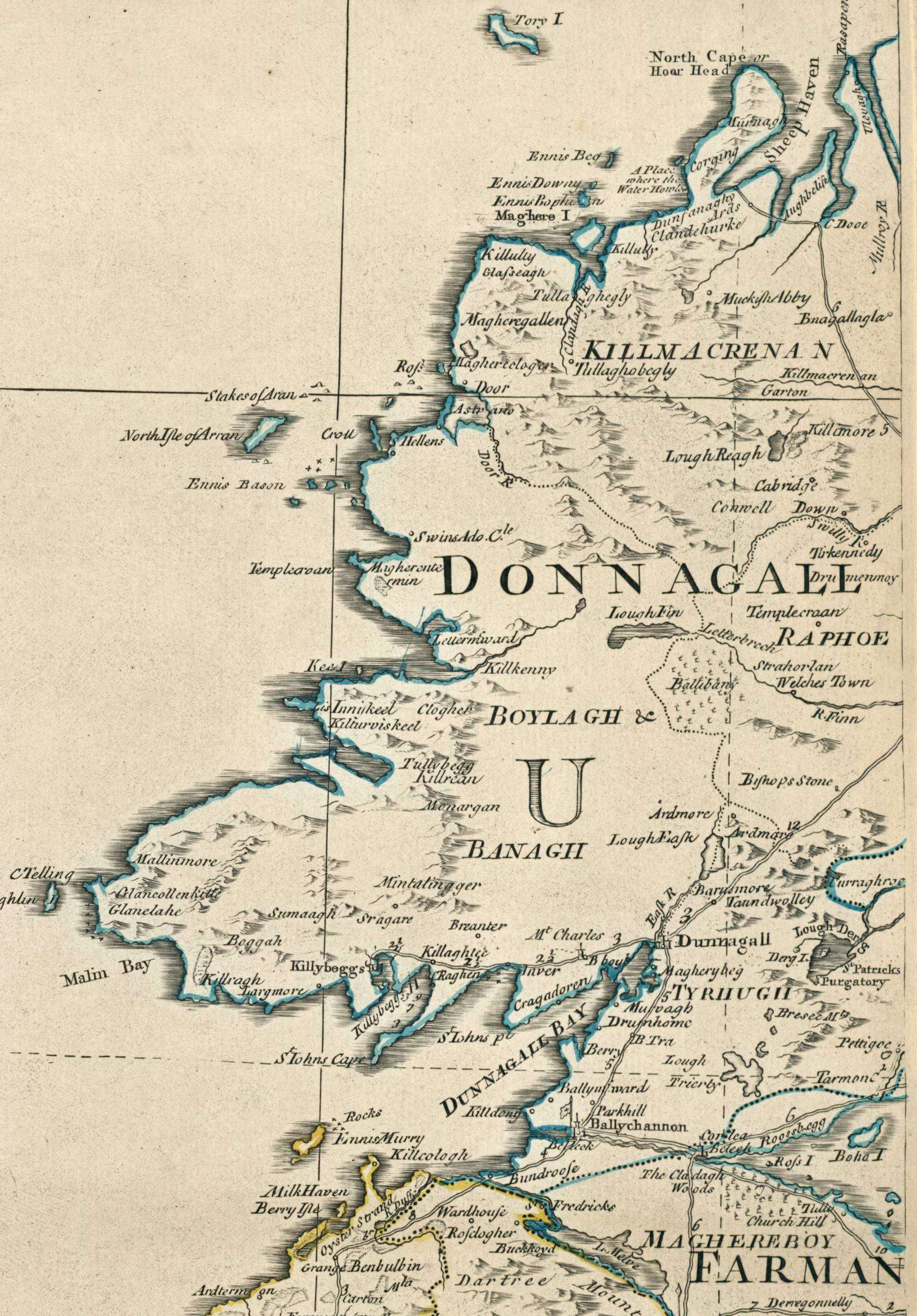


Longitude west from London. 10 50 40 30 20 10 10 50 40 30 20 10 0 50 40 30 20

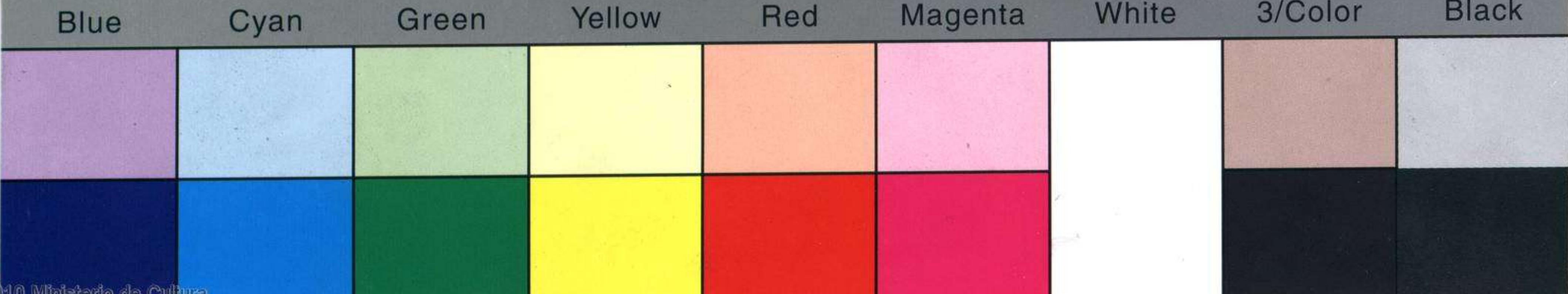
Longitude west from London.



A MAP OF THE Kingdom of Ireland, Divided into Provinces, Counties and Baronies, Showing The Archbishopricks, Bishopricks, Cities, Boroughs, Market-Towns, Villages, Barracks, Mountains, Lakes, Bogs, Rivers, Bridges, Ferries, Passes, also the Great, the Branch, & the Bay Post Roads, together with the Inland Navigation, by J. ROBERTS, Chorographer to HIS MAJESTY.



Colour Chart #13







# WESTERN

# GALLWAY

# OCEAN

# LIMERICK

# MUNSTER

# CORK

# KERRY

# TIPPERARY

# WATERFORD

Longitude west from London

English Miles 69 and a half to a Degree  
Irish Miles in proportion with the English as 14 to 17

London Printed for R. Sayer and Son



IRELAND called by the Latins Hibernia and by the Natives Erin is the largest Island in Europe except Great Britain its Area or Superficial Content is by the nearest Computation found to be no 7712 Irish Plantation Acres which makes 57927804 Acres of English Statute Measure its proportion is with England and Wales as 18 to 30.

S<sup>t</sup> William Petty in his Political Anatomy of Ireland reckon'd the Number of People in that Kingdom Anno 1672 to be about 1200,000 and it is Comput'd that it contains now above Two Millions.

The Climate of Ireland is very Temperate The Soil very fertile and the Air so pure that no Venemous Animal can Live in it.

The Ecclesiastic Government of the Kingdom is divided into four Archbishopsricks viz<sup>t</sup> Armagh Dublin Cathull and Tuam who have under them 18 Suffragant Bishops several of which have 2 or 3 Bishopsricks United into its provinces & County

The Temporal Government which is like that of England is divided into 5 Circuits viz<sup>t</sup> Leinster Munster Connaught North East and North West which comprehends 31 Counties (each of them subdivided into several Districts and Baronies) besides the County of Dublin which is not in any Circuit

Dublin the Metropolis of the Kingdom is a fair and well built City, pleasantly Seated near a large Harbour on the Mouth of the River Liffy which separates between the City and North Suburbs which have Communication by five great Stone Bridges. It is both large and Populous and is supposed to contain about 10,000 Houses and in them at least 100,000 Souls. it is adorned with several fine Structures as the Kings Chappel called Christ Church, the ancient Cathedral of S<sup>t</sup> Patrick, the Kings Castle which is the Residence of the Lord Lieutenant or Vice Roy of the Kingdom, the House of Parliament the Barracks the Trinity Colledge &c.

The other Places of Note are Corke a large and Rich City Waterford a noted Sea Port Galway Drogheda and Belfast Sea Towns. Limerick and Londonderry places of great Strength famous for the Sieges they have Endured.



posito Petter Lane Fleet Street.