

Diagramme.

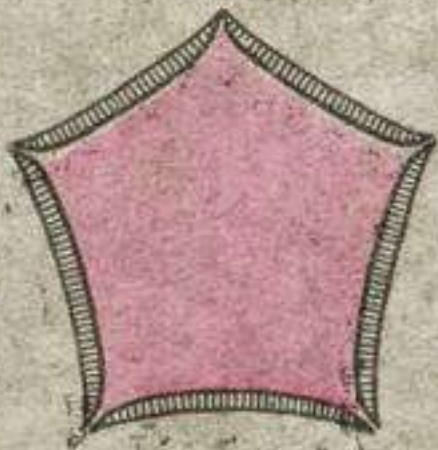
1



Valvaire.



V^{re} induplicative.



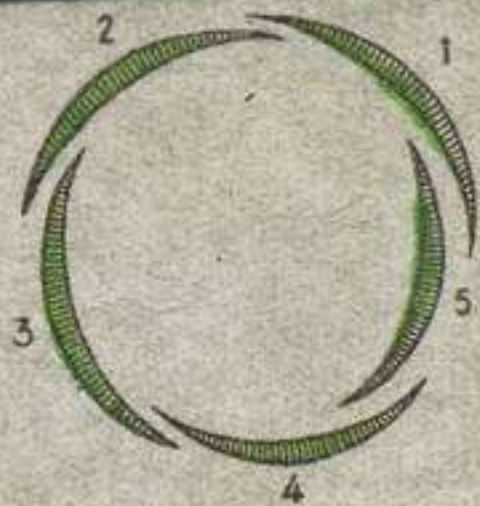
V^{re} réduplicative.



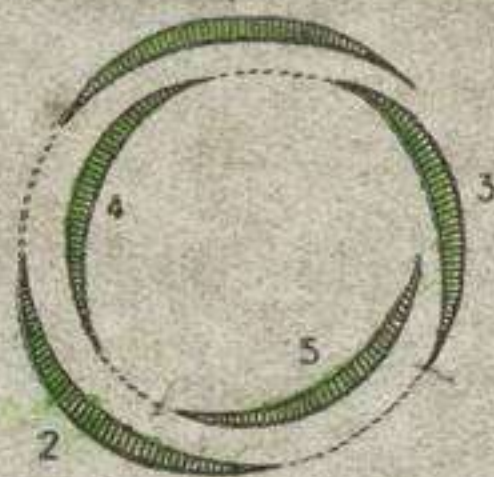
Tordue.

Préfloraison.

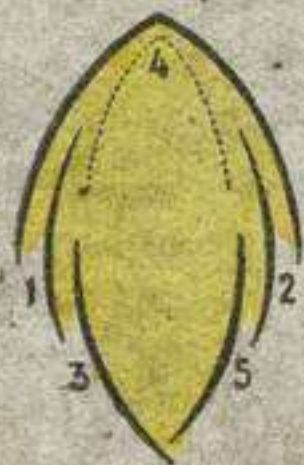
2



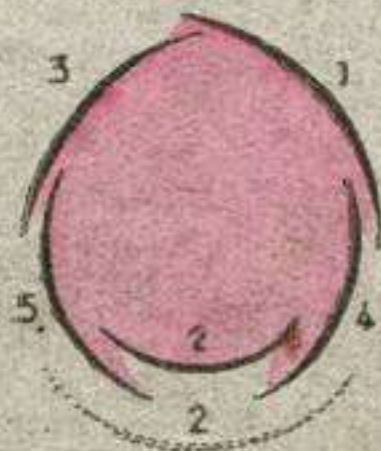
Imbriquée.



Quinconciale.

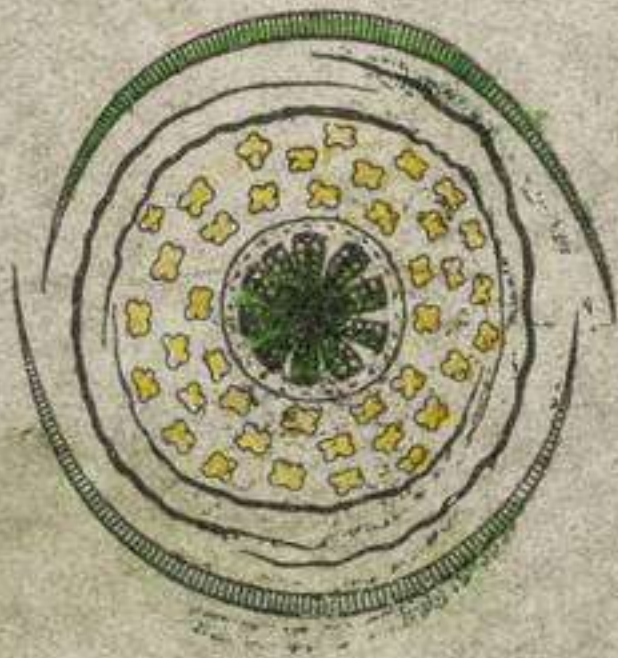


Vexillaire.



Cochléaire.

Préfloraison



Pavot.



Géranium.



Perce-neige

Multiplications de verticilles.



Lychnis.

Anemone.



Anemone.

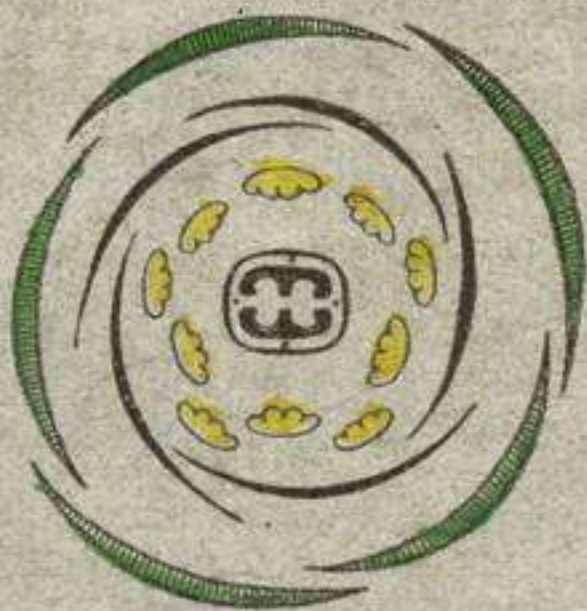
Dédoublement parallèle des verticilles



Oranger.

Ricin.

Dédoublément collatéral.



Œillet.



Pensée.

Suppression ou avortement.

7

E. HALL. PARIS



Myflar.



Gesse.

Suppression ou avortement.



A

Mullein.



B



A

Véronique.



B

Suppression ou avortement.

E. MAZO. PARIS

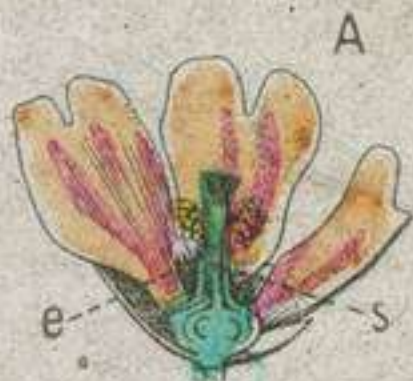
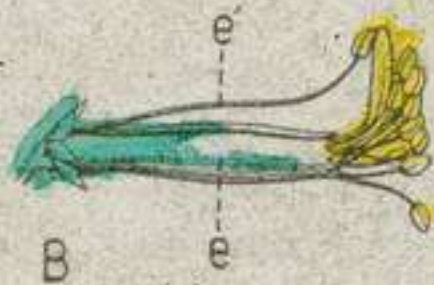
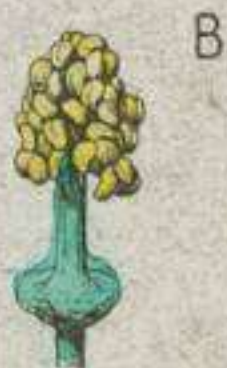


Pois.



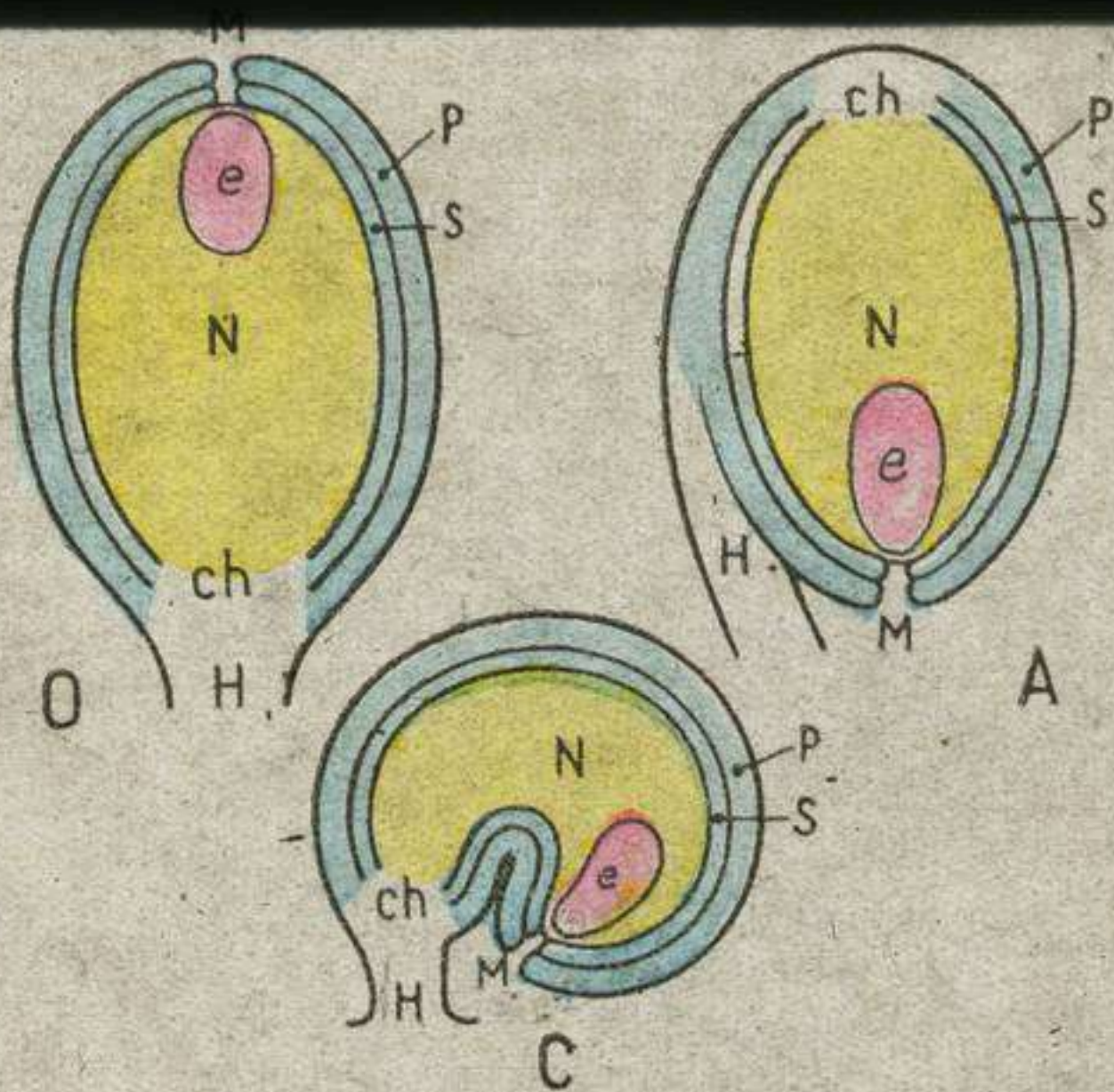
Capucine.

Inégalité de développement.



Mauve Et. monadelphes. *Pois* Et. diadelphes

Monadelphie - Diadelphie.



Formes de l'Ovule.