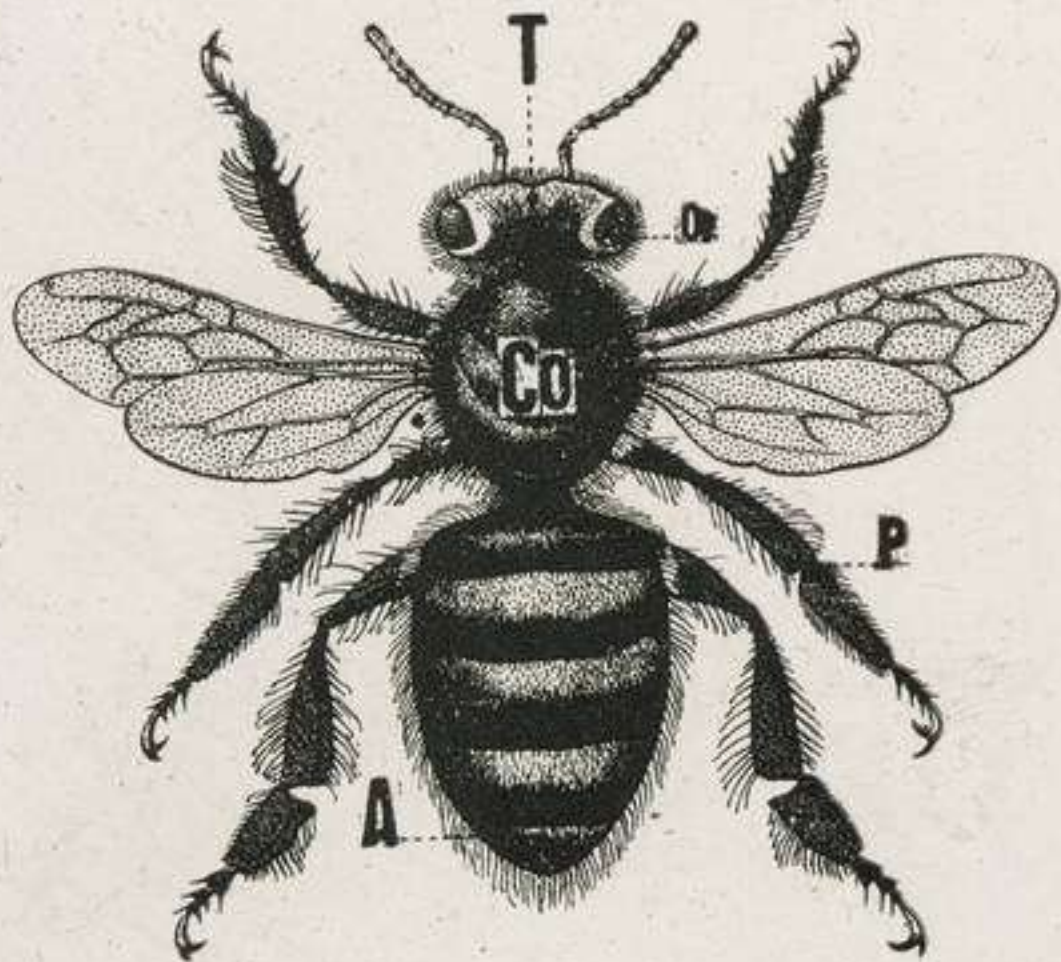


I. L' ABEILLE .

Différentes parties du Corps .



II . L'ESSAIM .
Colonie d'Abeilles .



III. REINE, OUVRIÈRE,
FAUX-BOURDON.

R



B

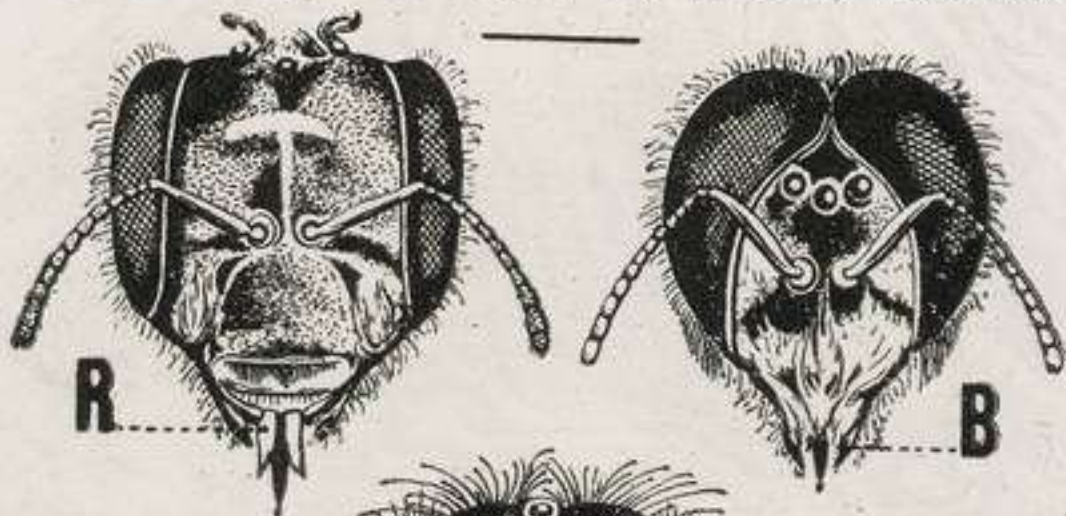


O



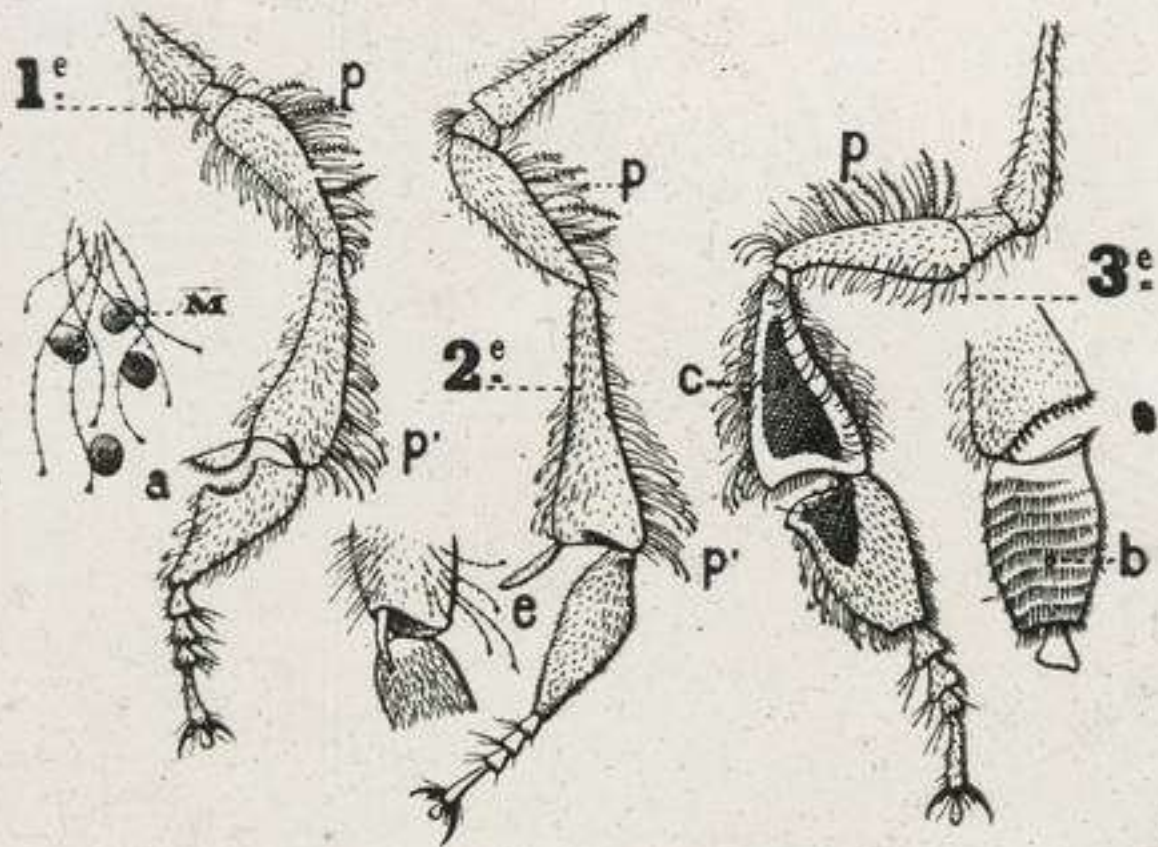
IV . LES TÊTES .

Reine , Ouvrière , Faux-bourdon

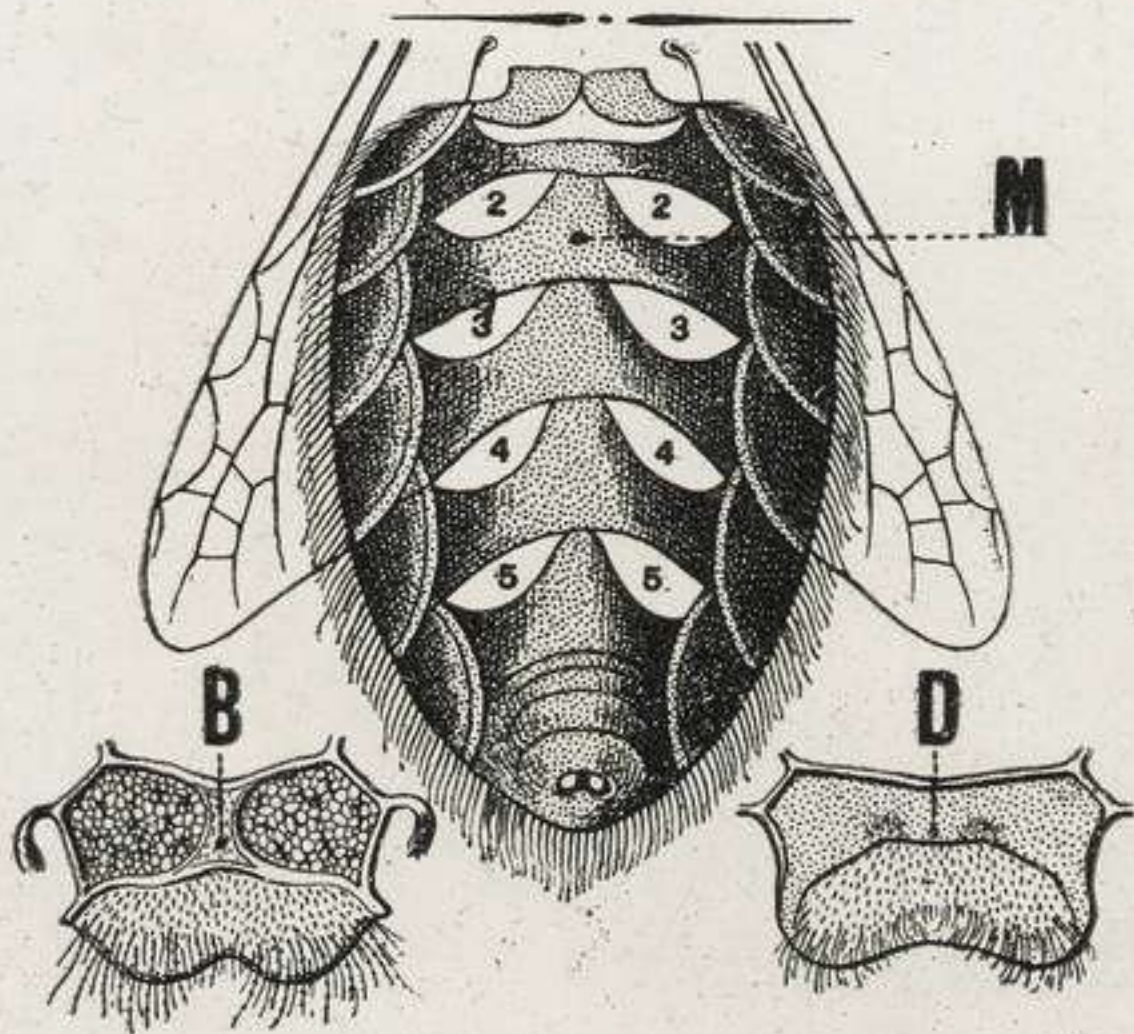


E. MEZO, à PARIS

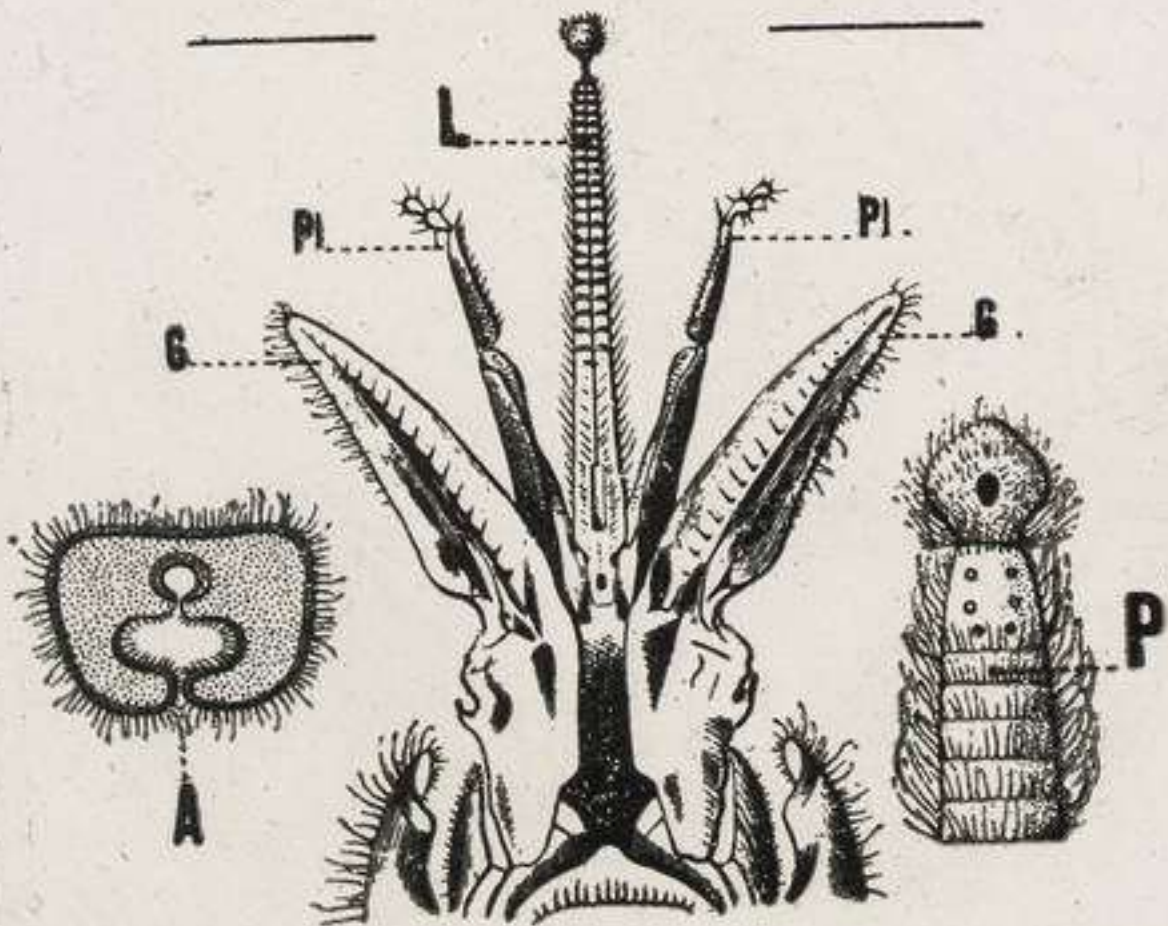
V. LES PATTES DE L'ABEILLE.



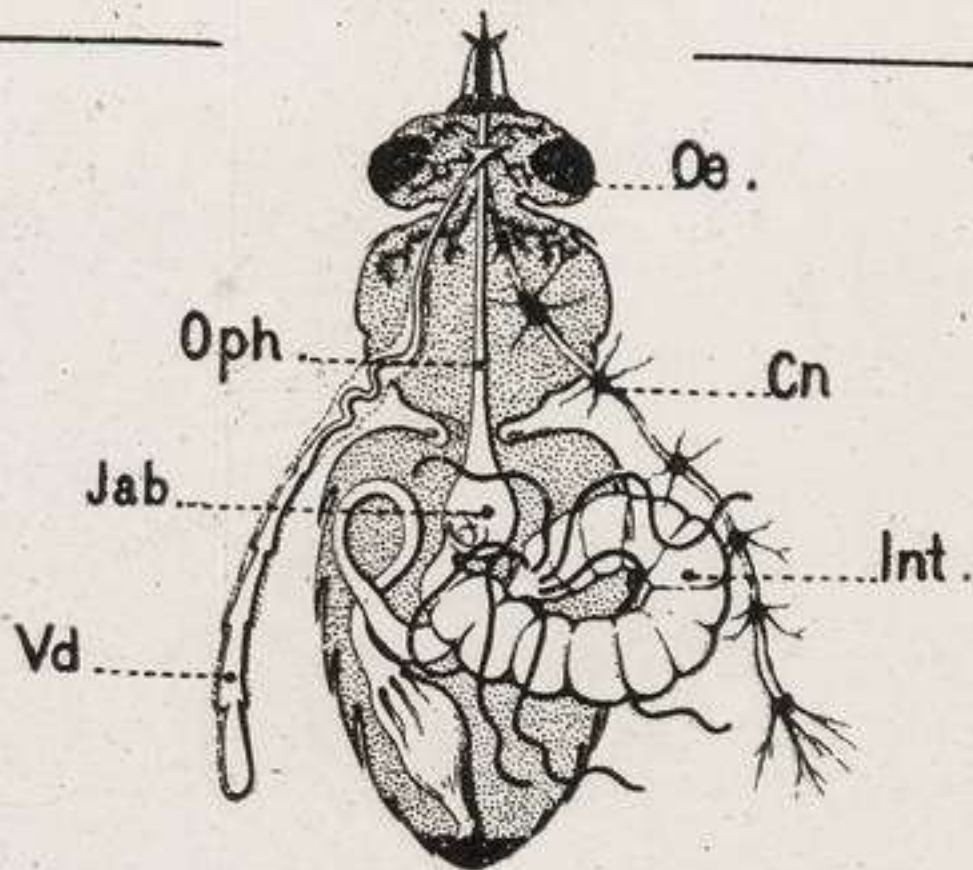
VI. GLANDES CIRIÈRES.



VII . LANGUE de L'ABEILLE .
et Pièces de la Bouche .

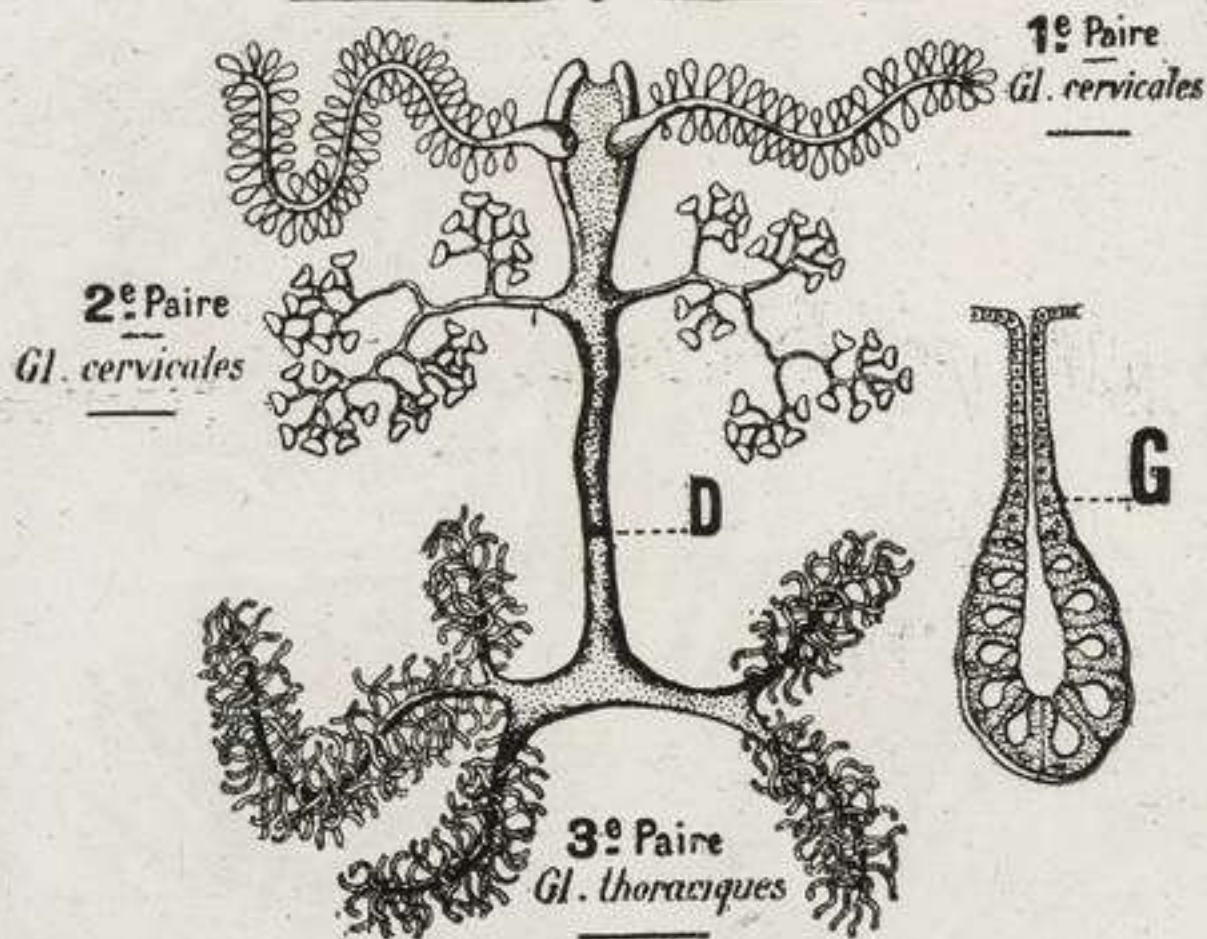


VIII. L'APPAREIL DIGESTIF de L'ABEILLE.

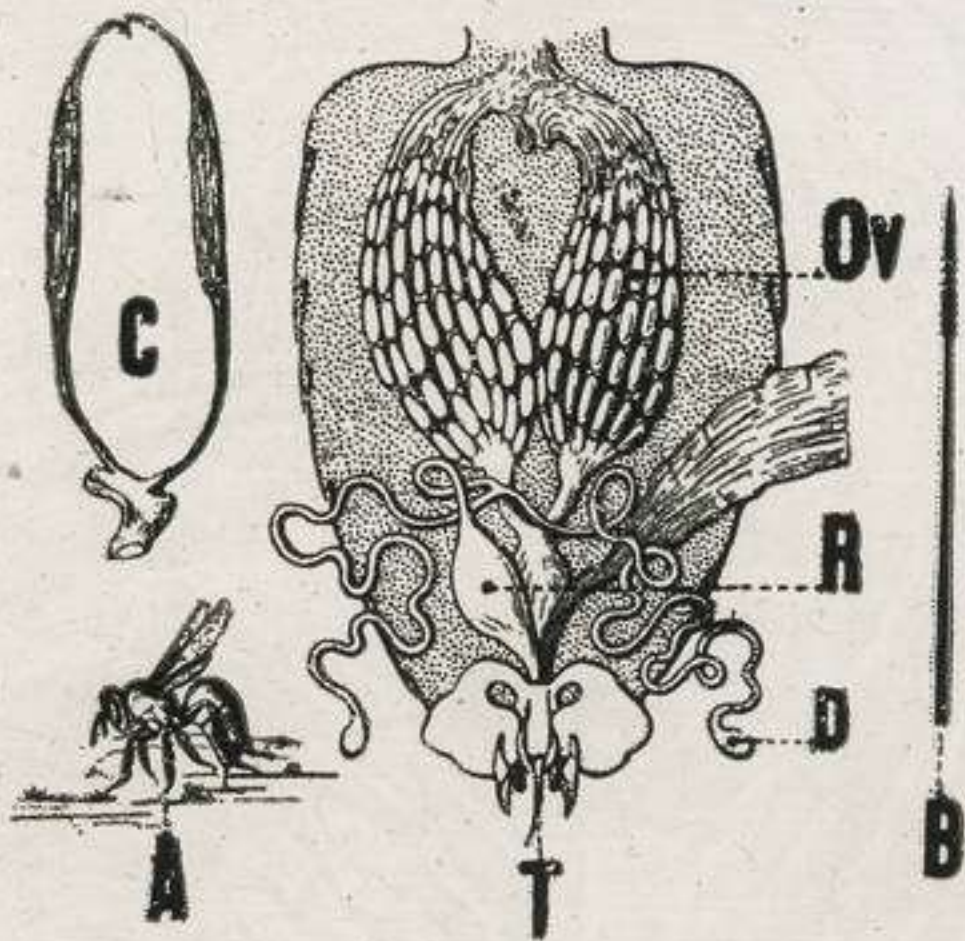


E. HAZO, 1 PARIS

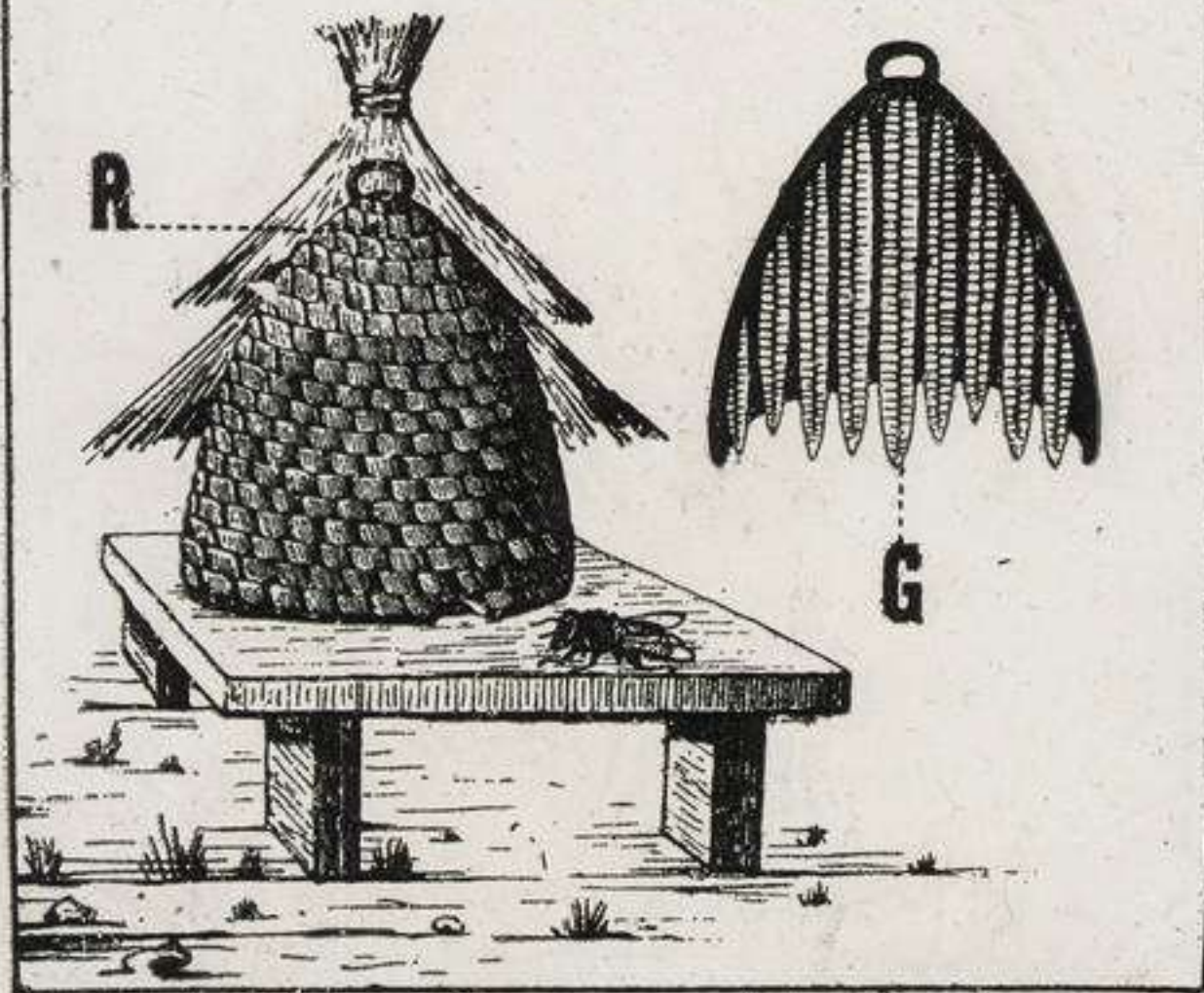
IX. LES GLANDES SALIVAIRES



X. AIGUILLON et GLANDES VENIMEUSES.



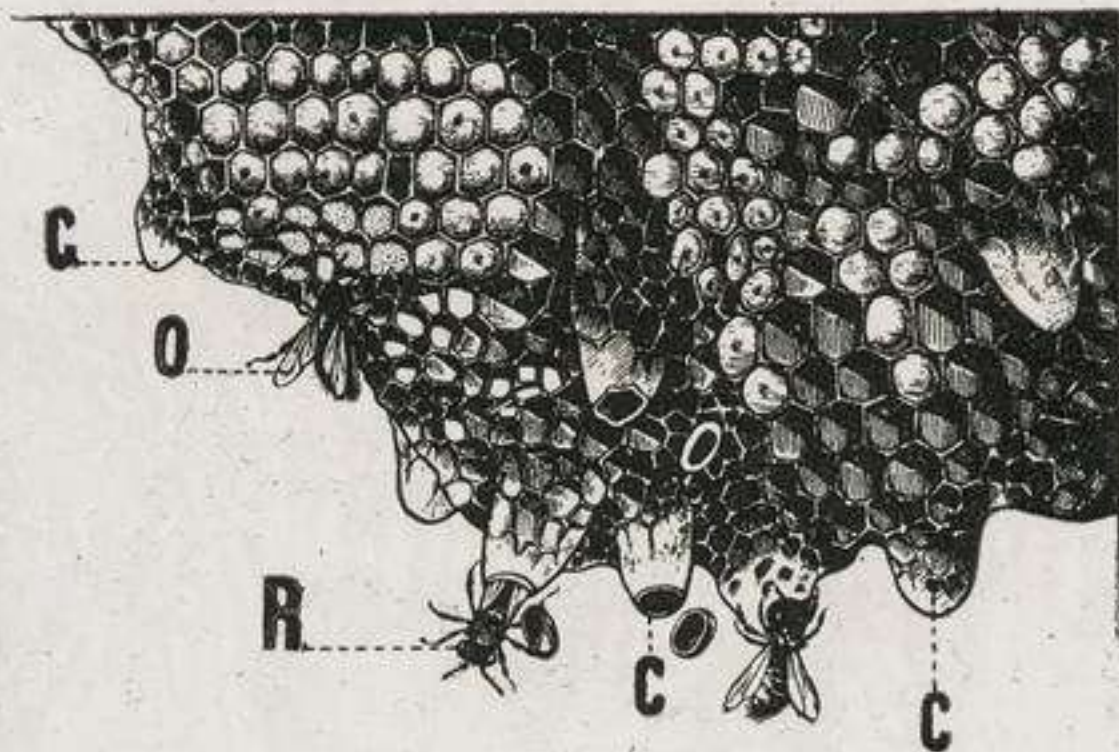
XI. LA RUCHE ANCIENNE.



XII . UN RUCHER PRIMITIF .

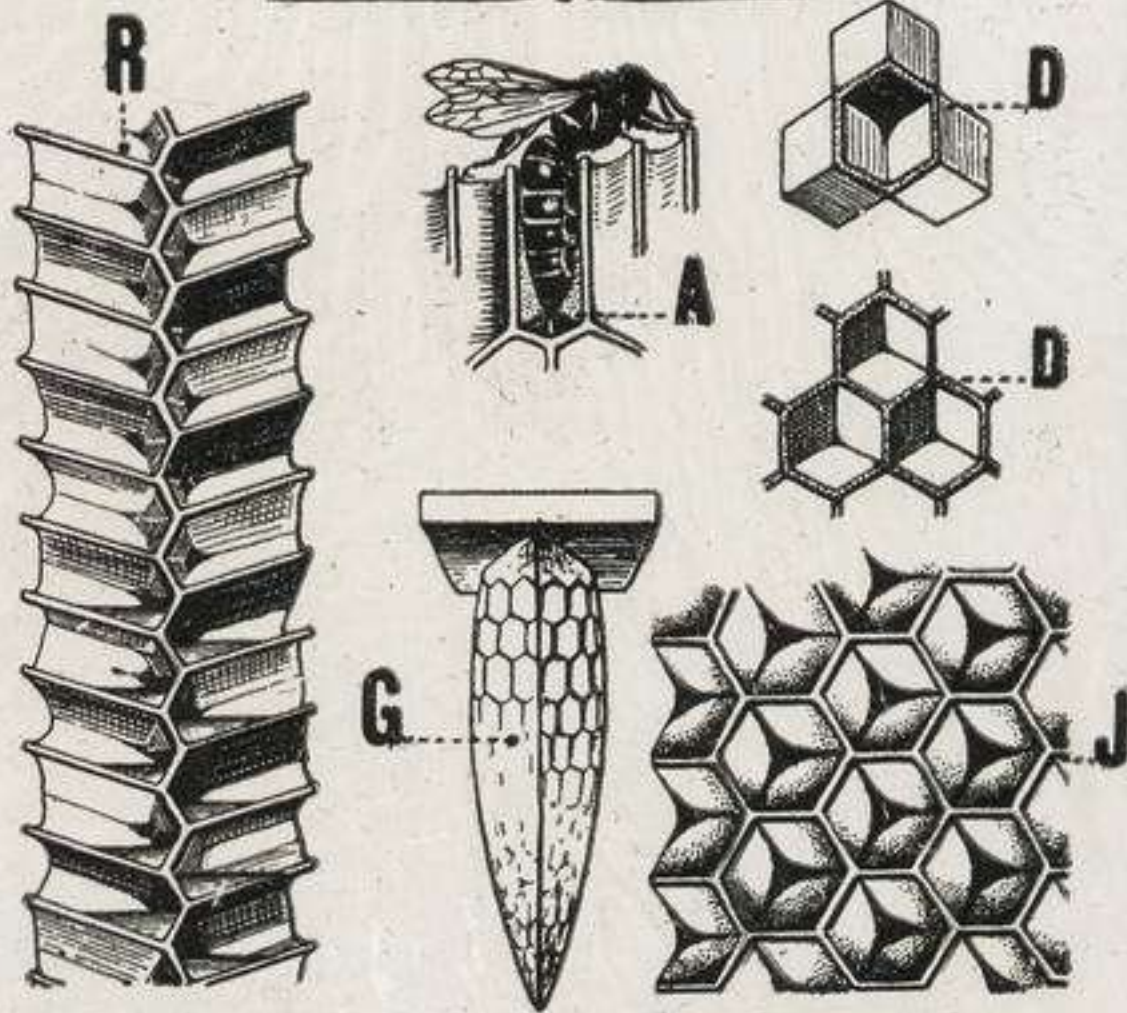


XIII . LES ALVÉOLES .

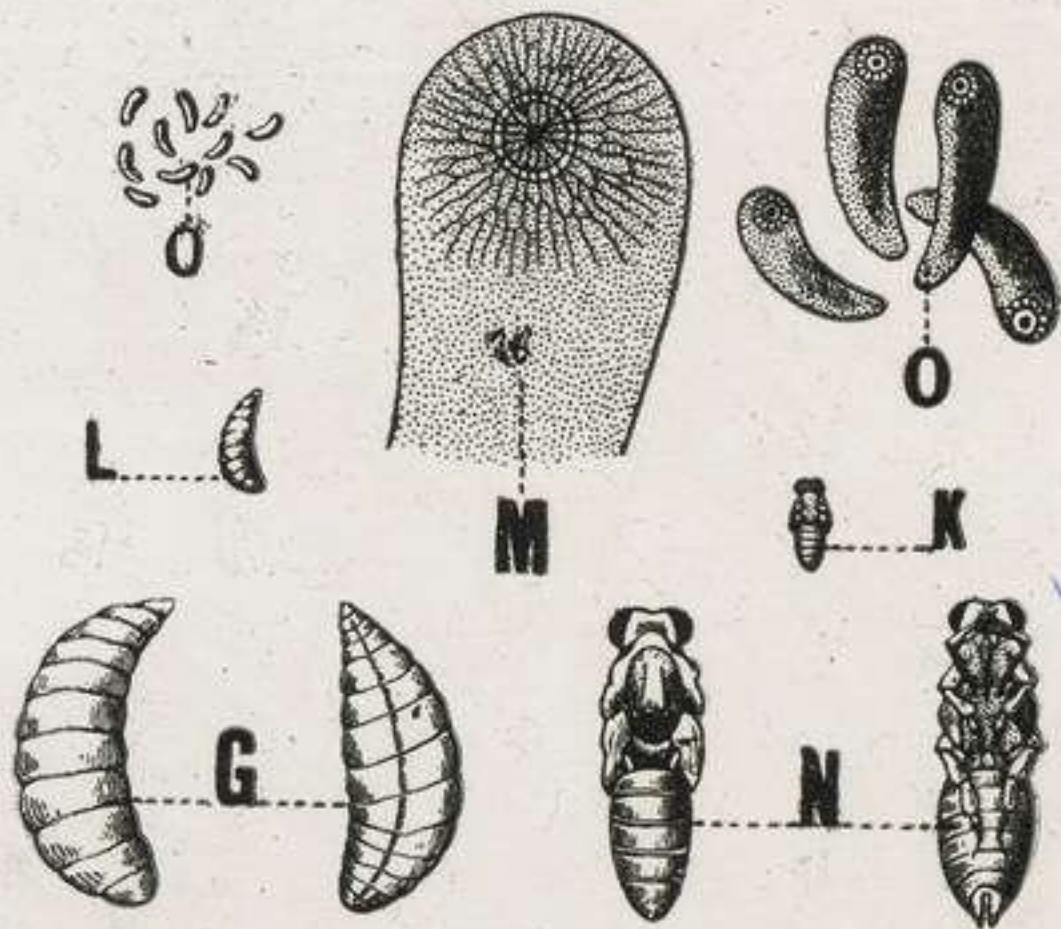


E. MAZO, A PARIS

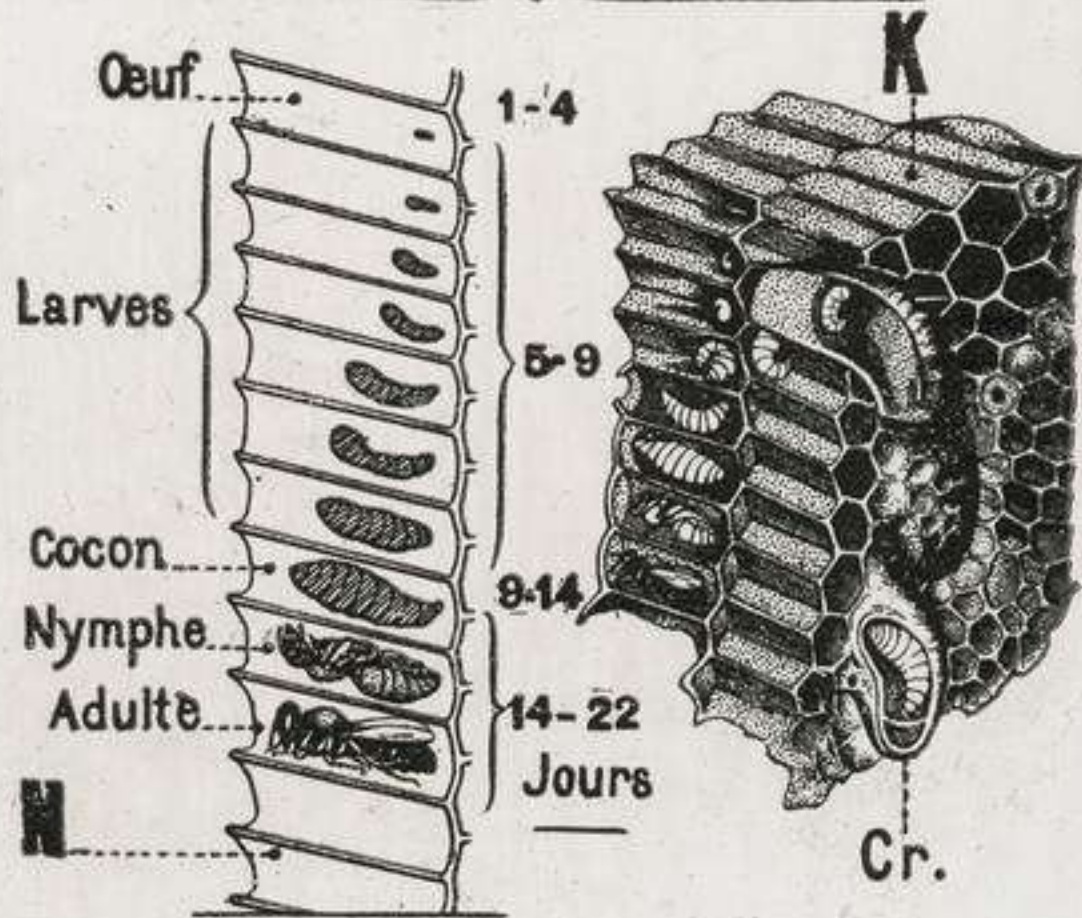
XIV. GÉOMÉTRIE de L'ABEILLE



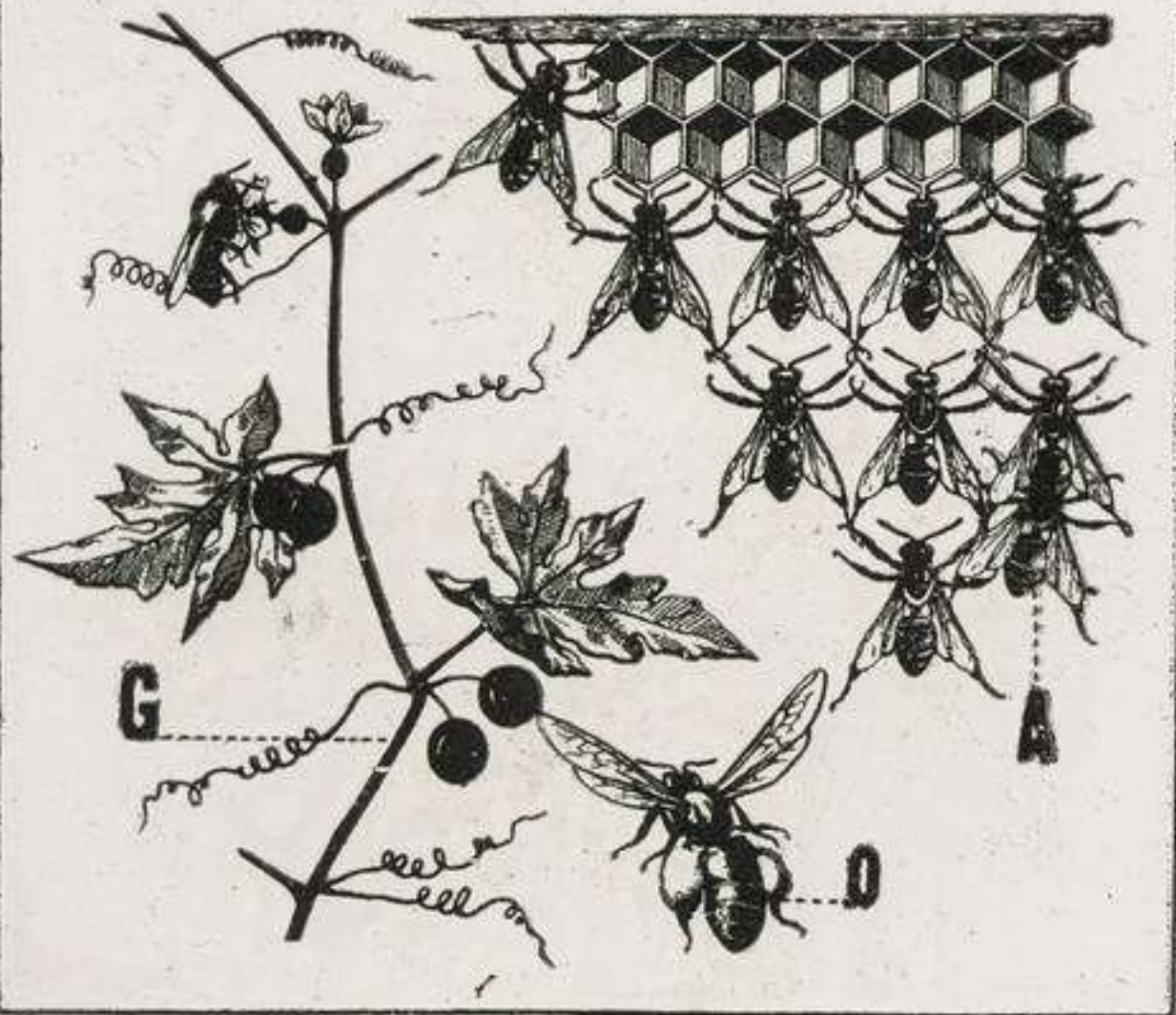
XV. LES ŒUFS et les LARVES



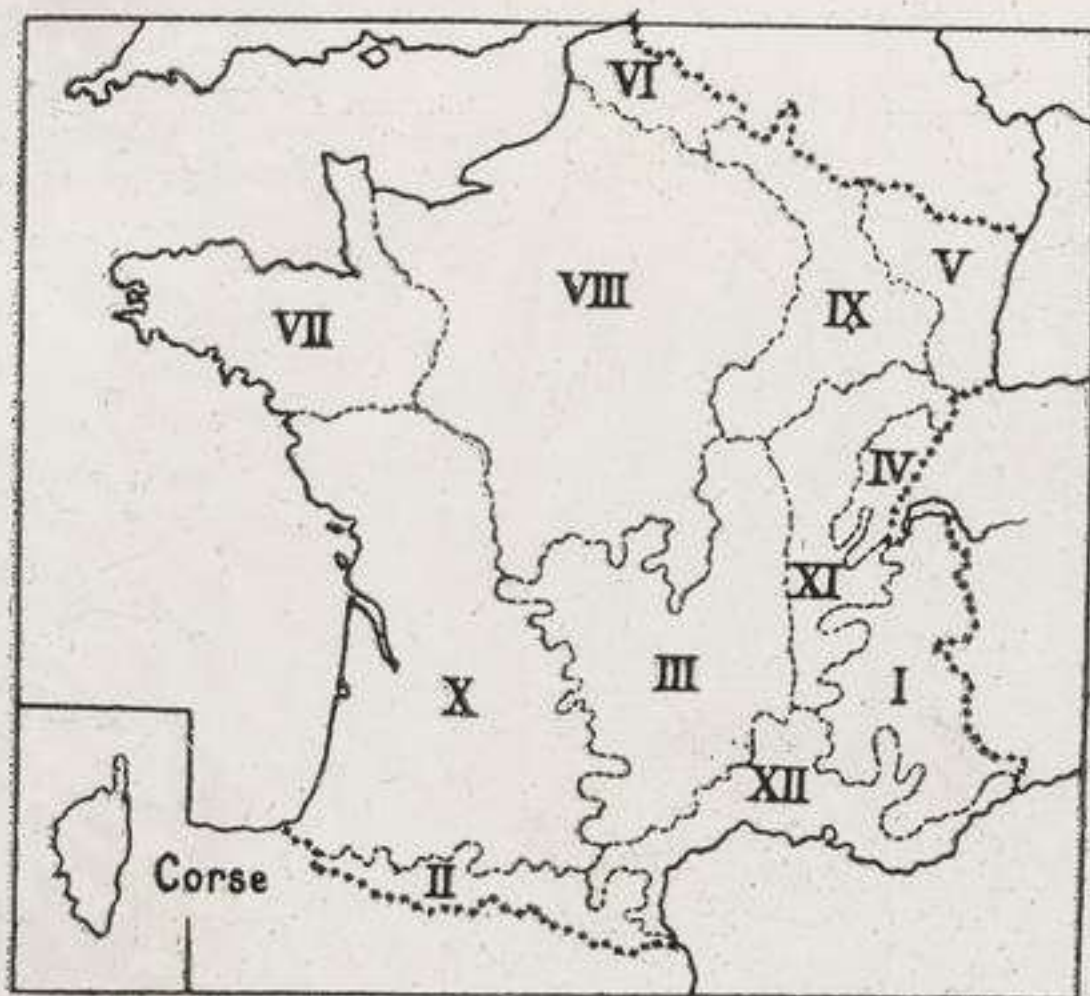
XVI. EVOLUTION DES LARVES



XVII. PRODUITS DES ABEILLES



XVIII. LES MIELS DE FRANCE



XIX. LA RUCHE A CADRES



XX. UN RUCHER MODERNE

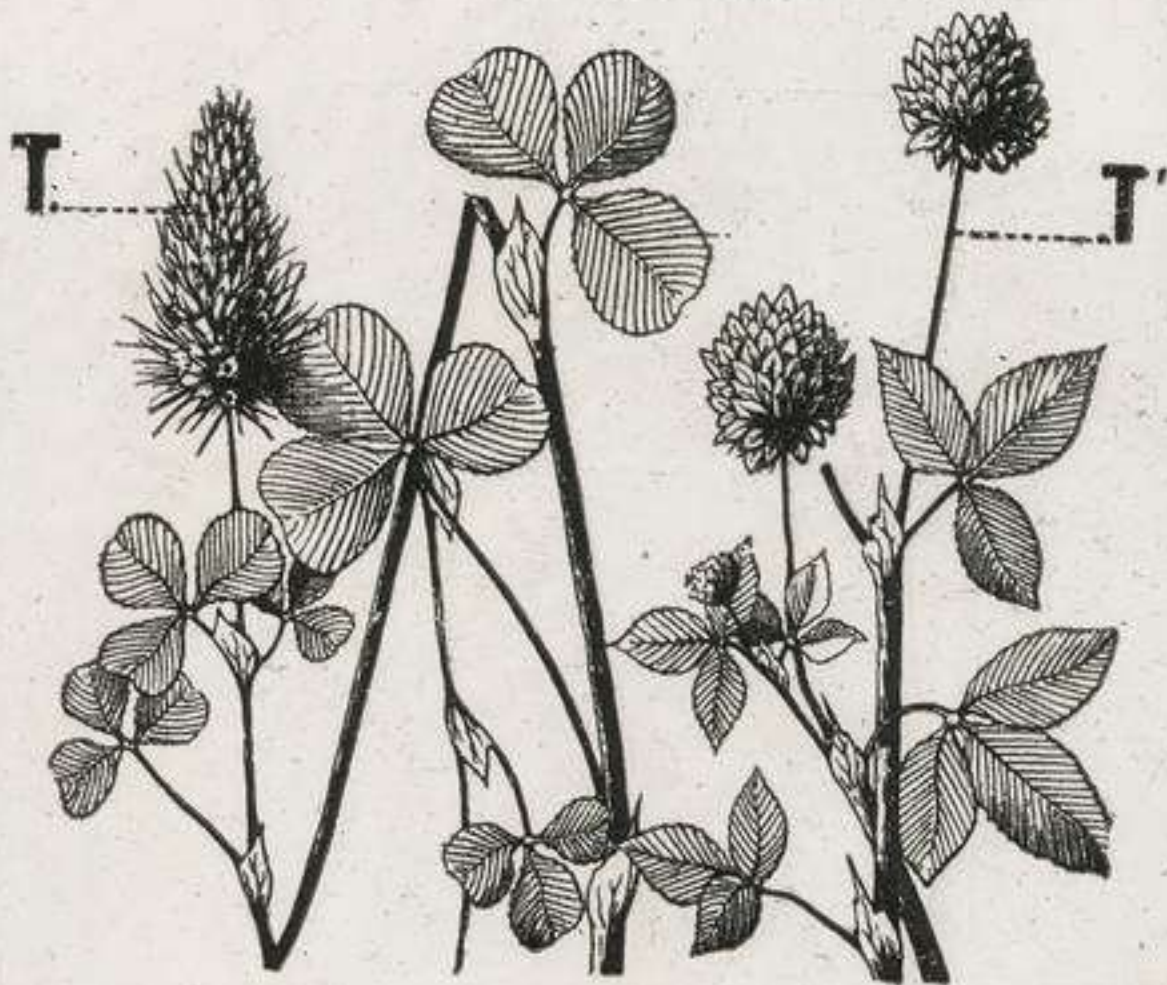


XXI. ORGANISATION de la RUCHE .

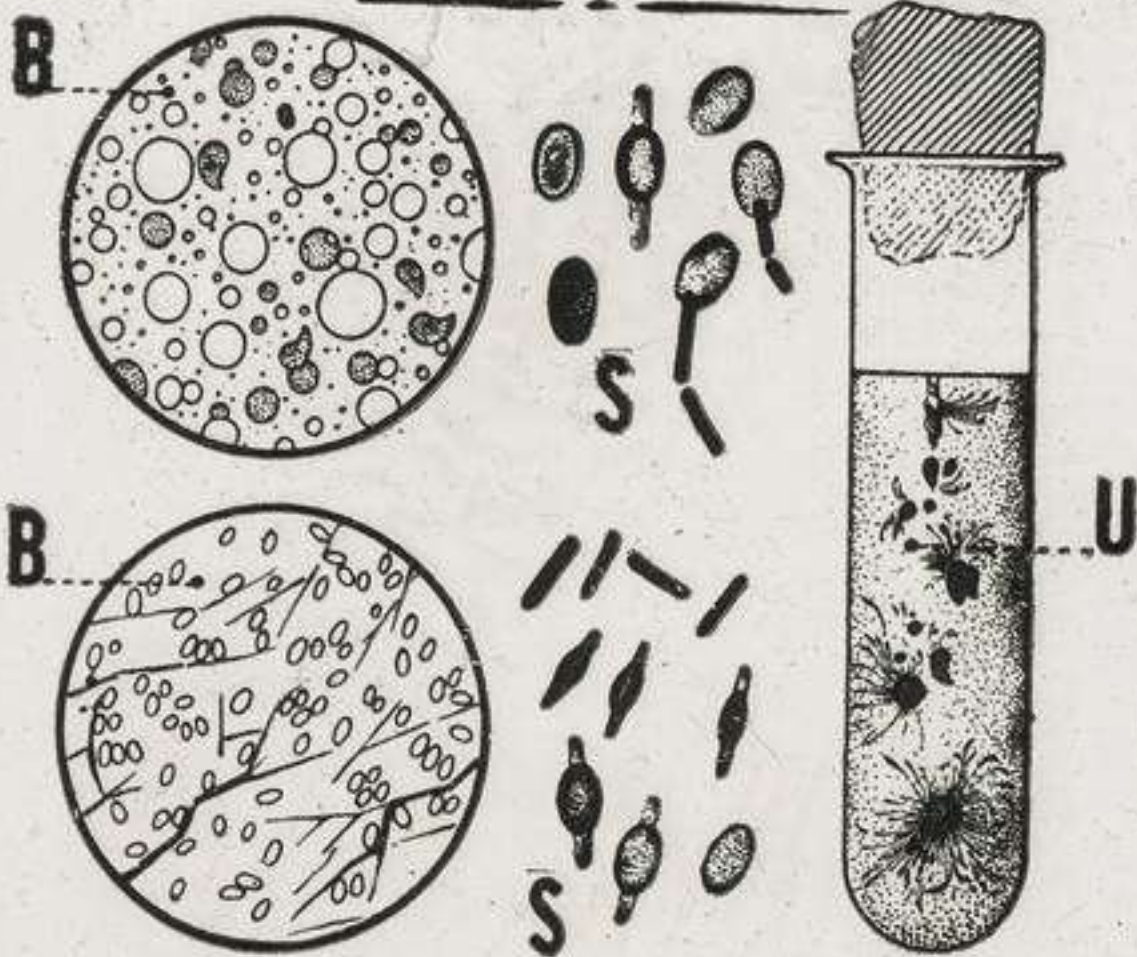
Jeunes
Soins intérieurs } Les Cirières .
Les Eleveuses .
Les Magasinières .

Vieilles
Soins extérieurs } Les Chercheuses .
Les Butineuses .
Les Nettoyeuses .
Les Ventilieuses .
Les Gardiennes .

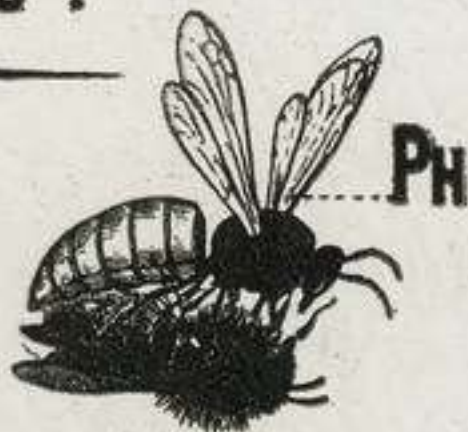
XXII. PLANTES MELLIFÈRES



XXIII. MALADIES des ABEILLES



XXIV. LES ENNEMIS
des ABEILLES.



É. MAZO, A PARIS