

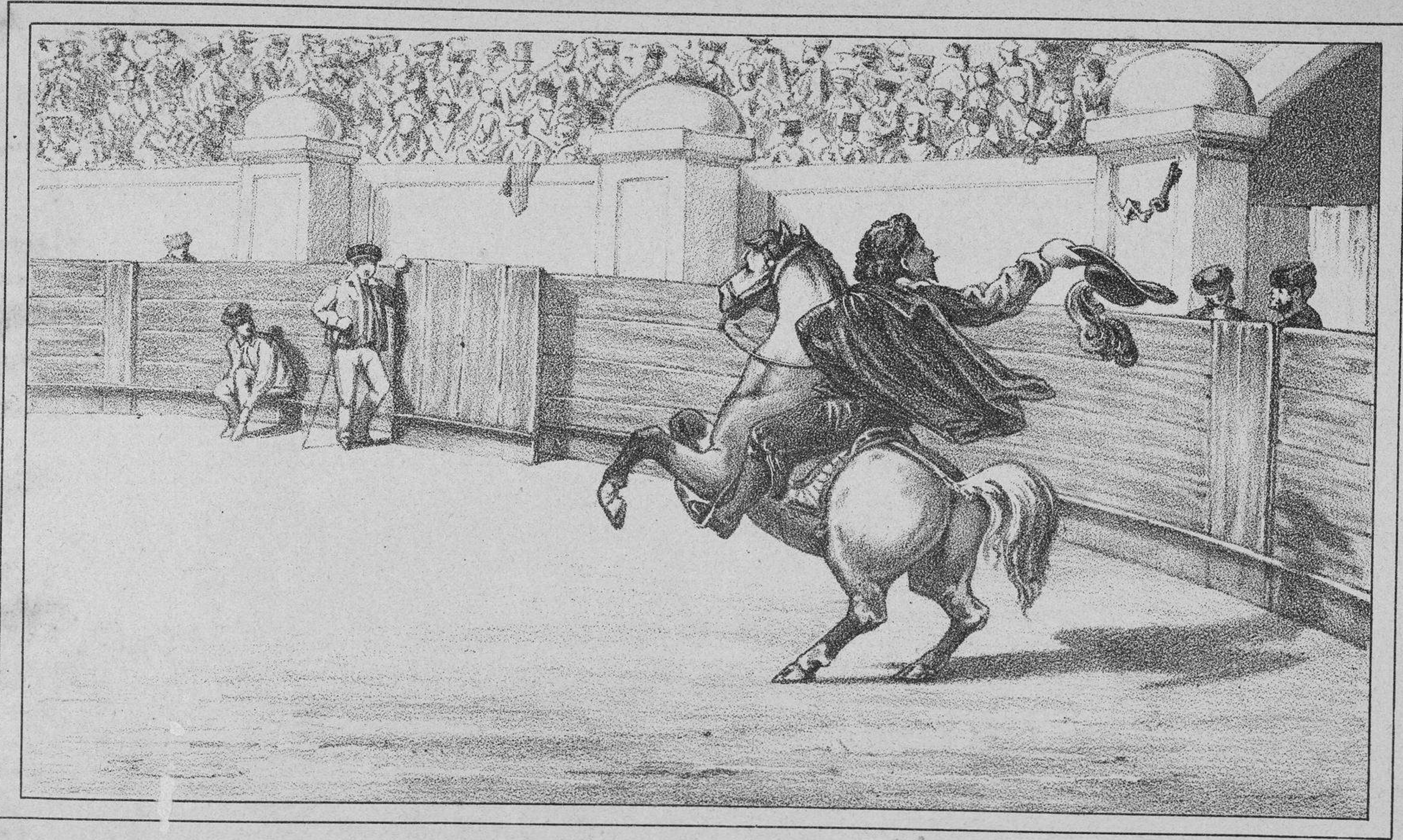
C30 12000



JANESIA ESPANOLA

L. J. 1880

L. J. 1880

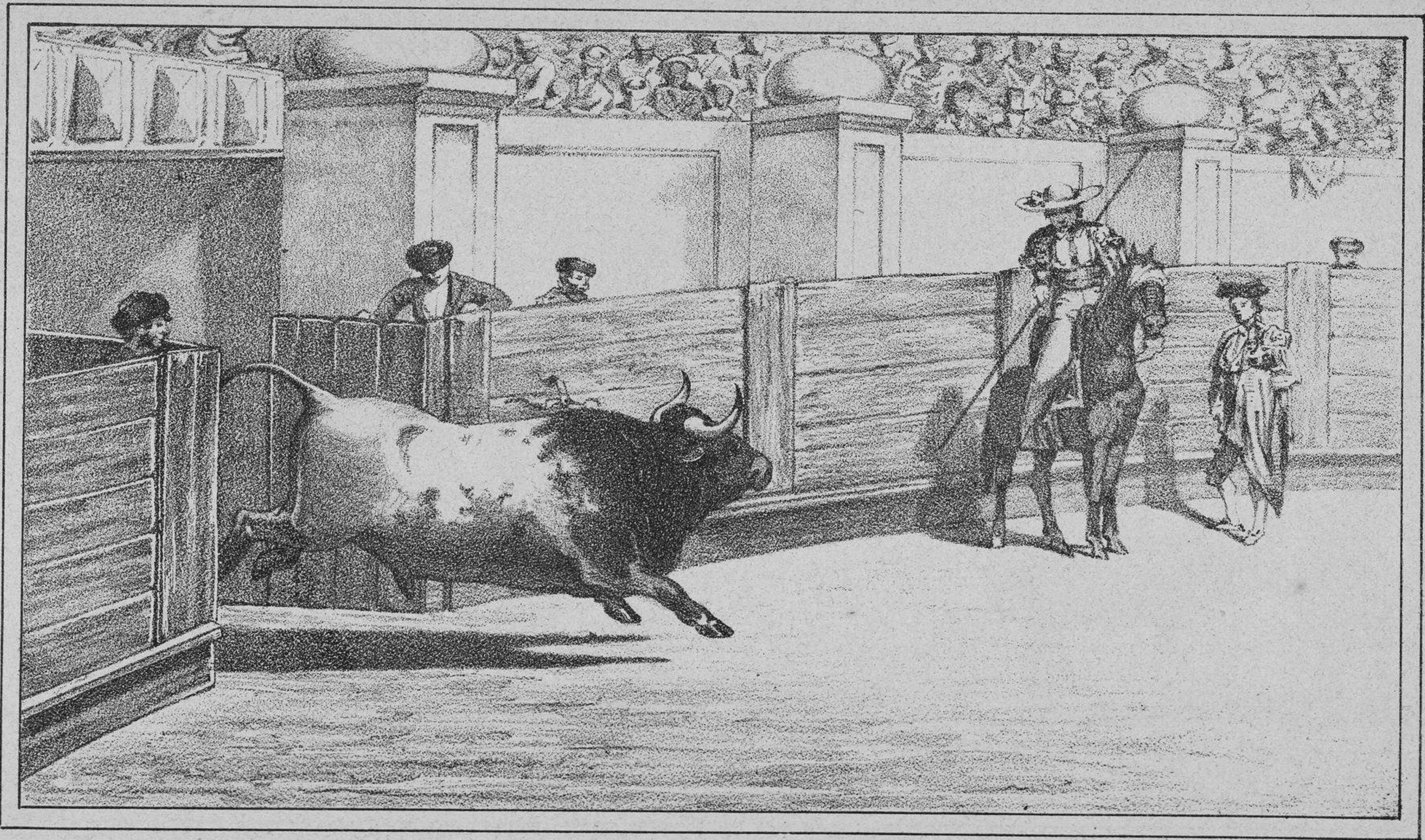


El aguacil recoge la llave.

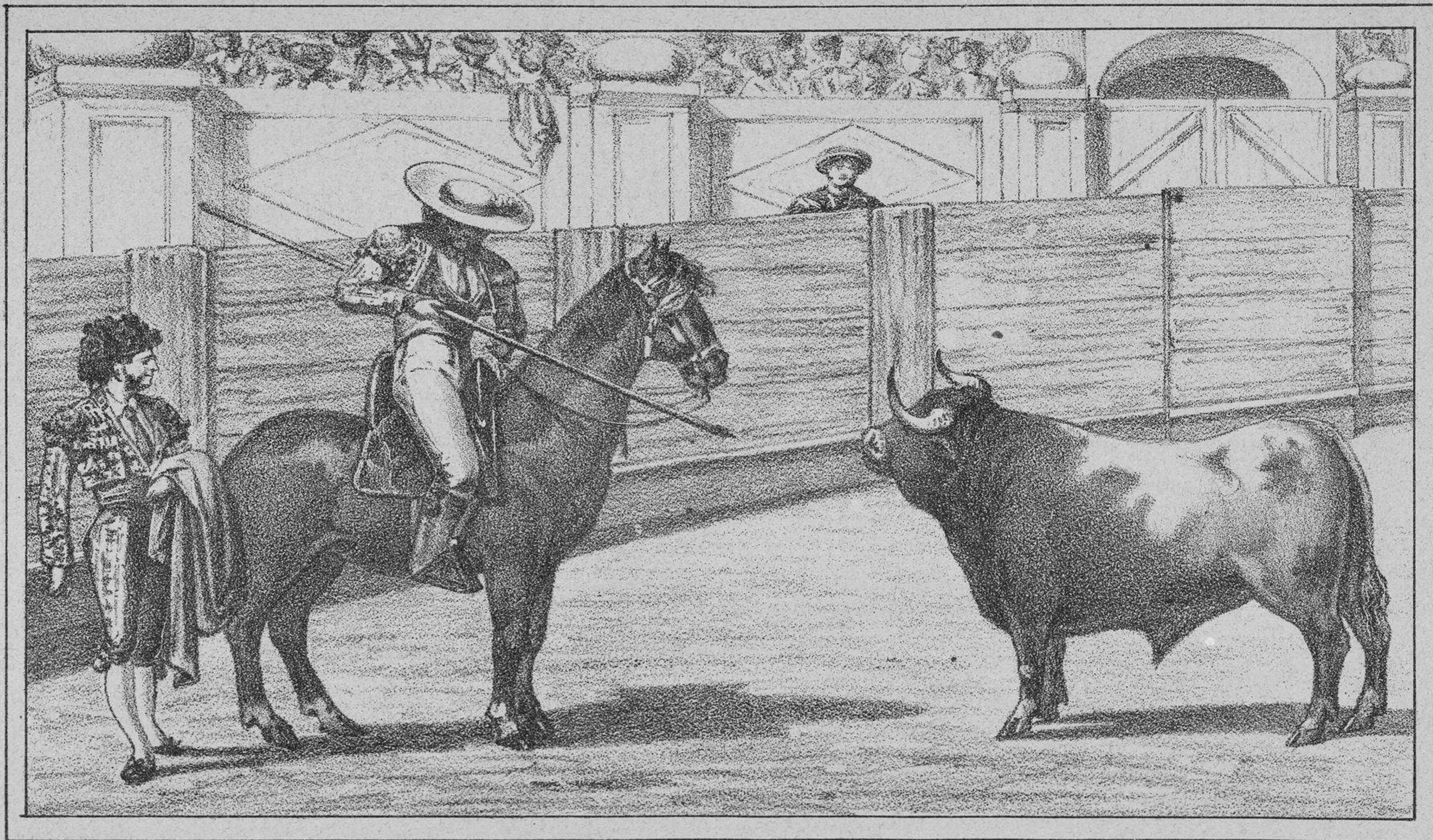




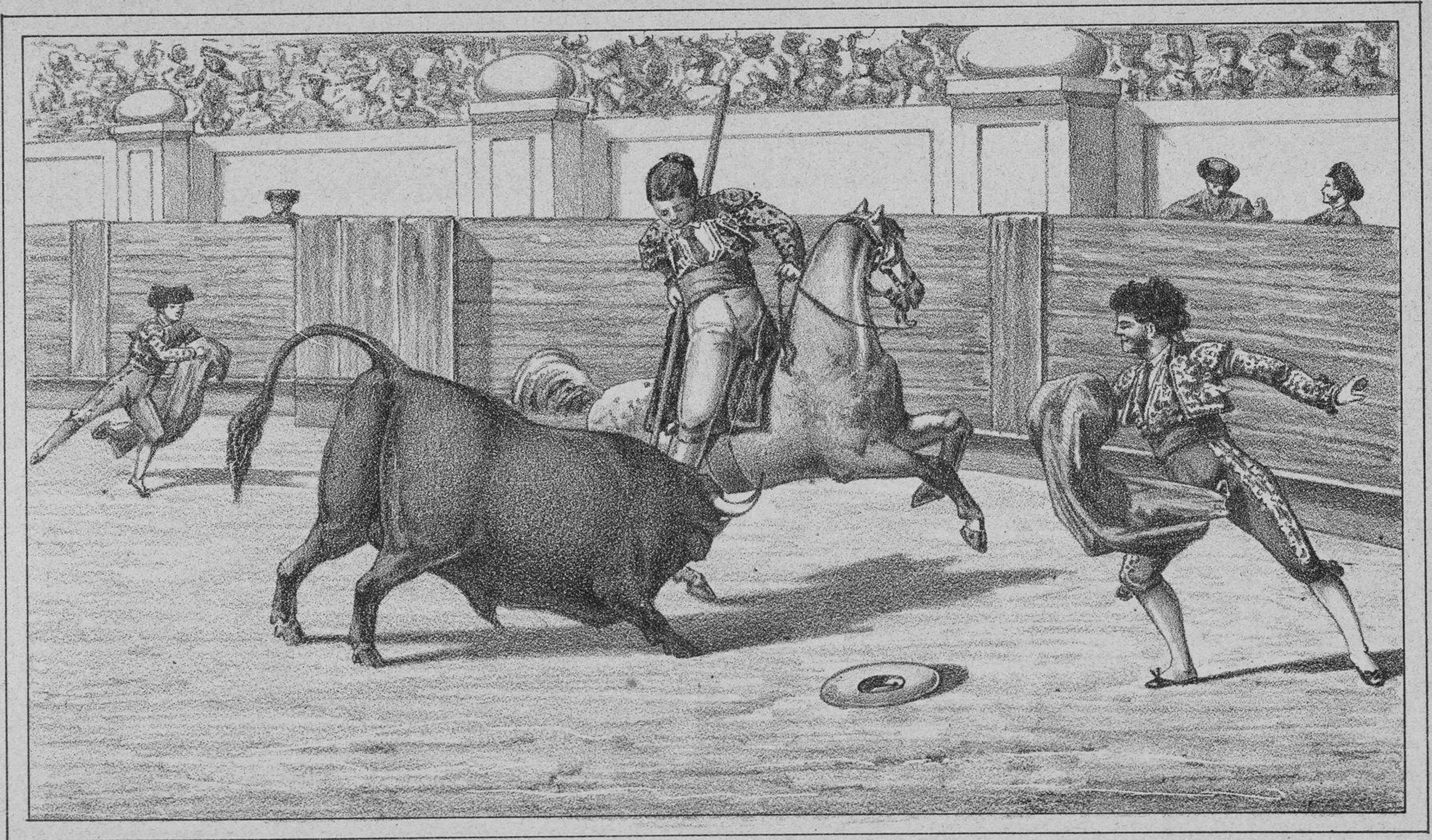
Salida de la cuadrilla.



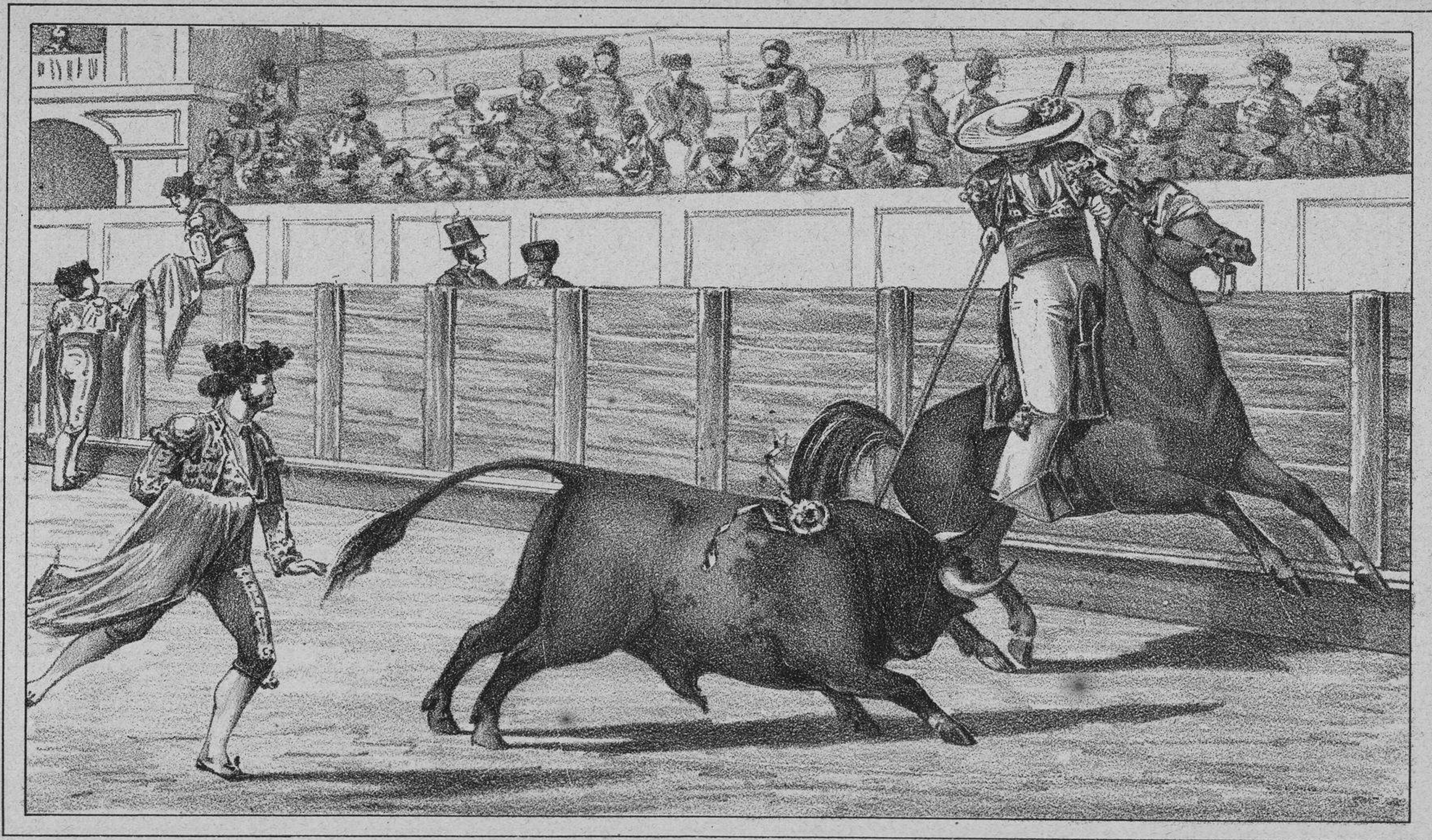
Salida del toro del chiquero.



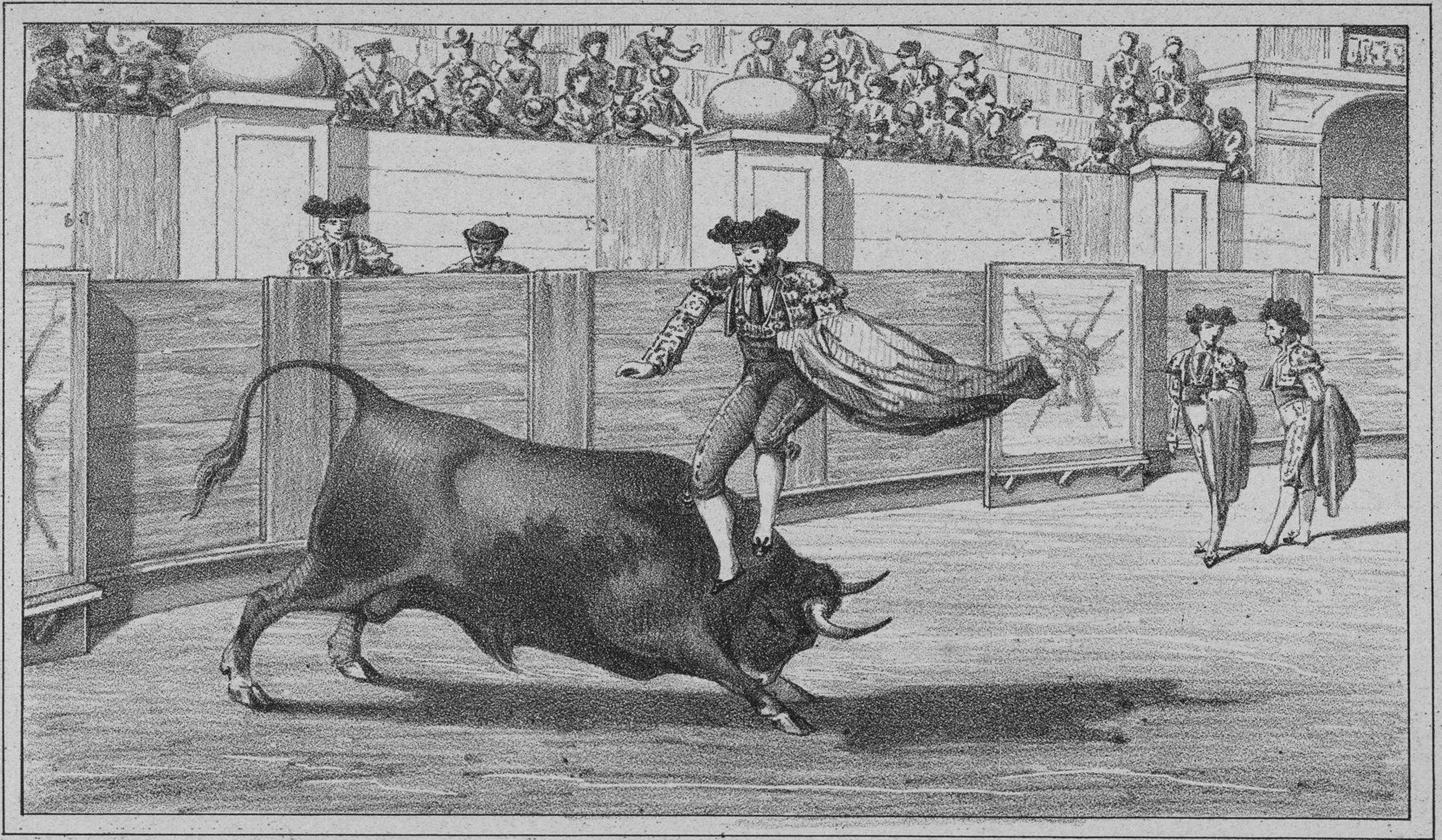
El picador cita al toro.



Centro de una suerte de bara.

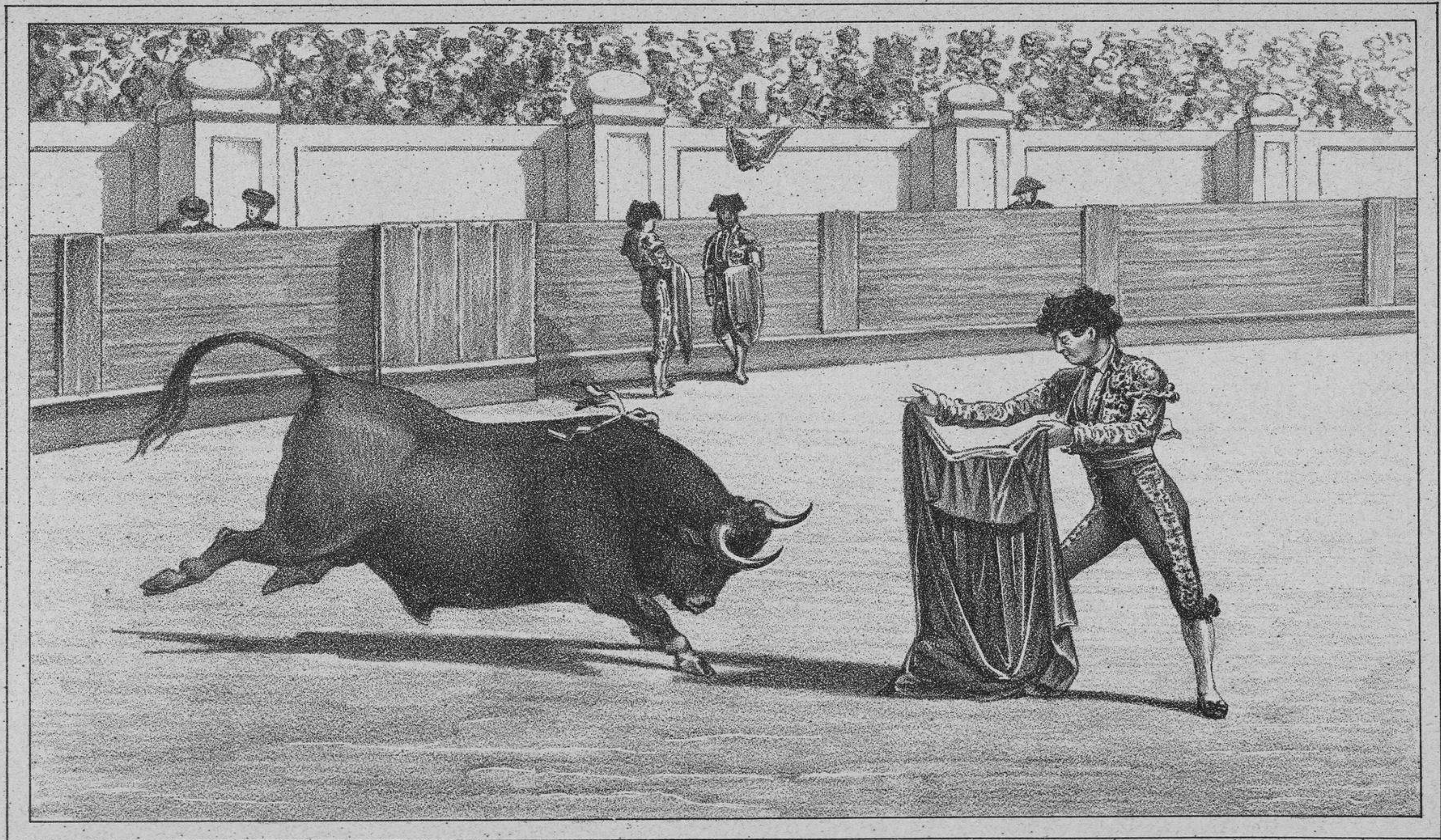


Recarga de un toro en una suerte de bara.

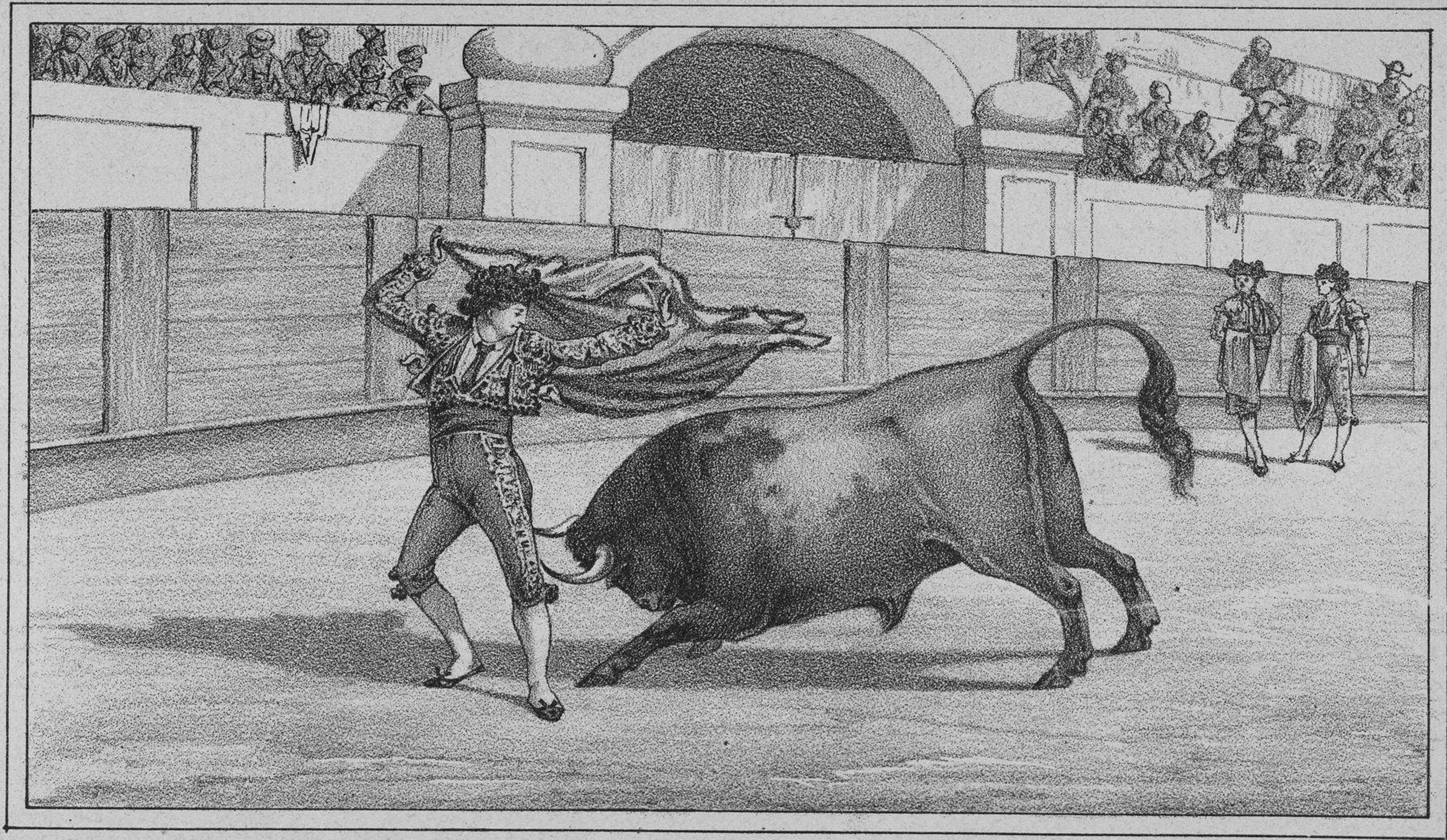


Salto al trascuerno.

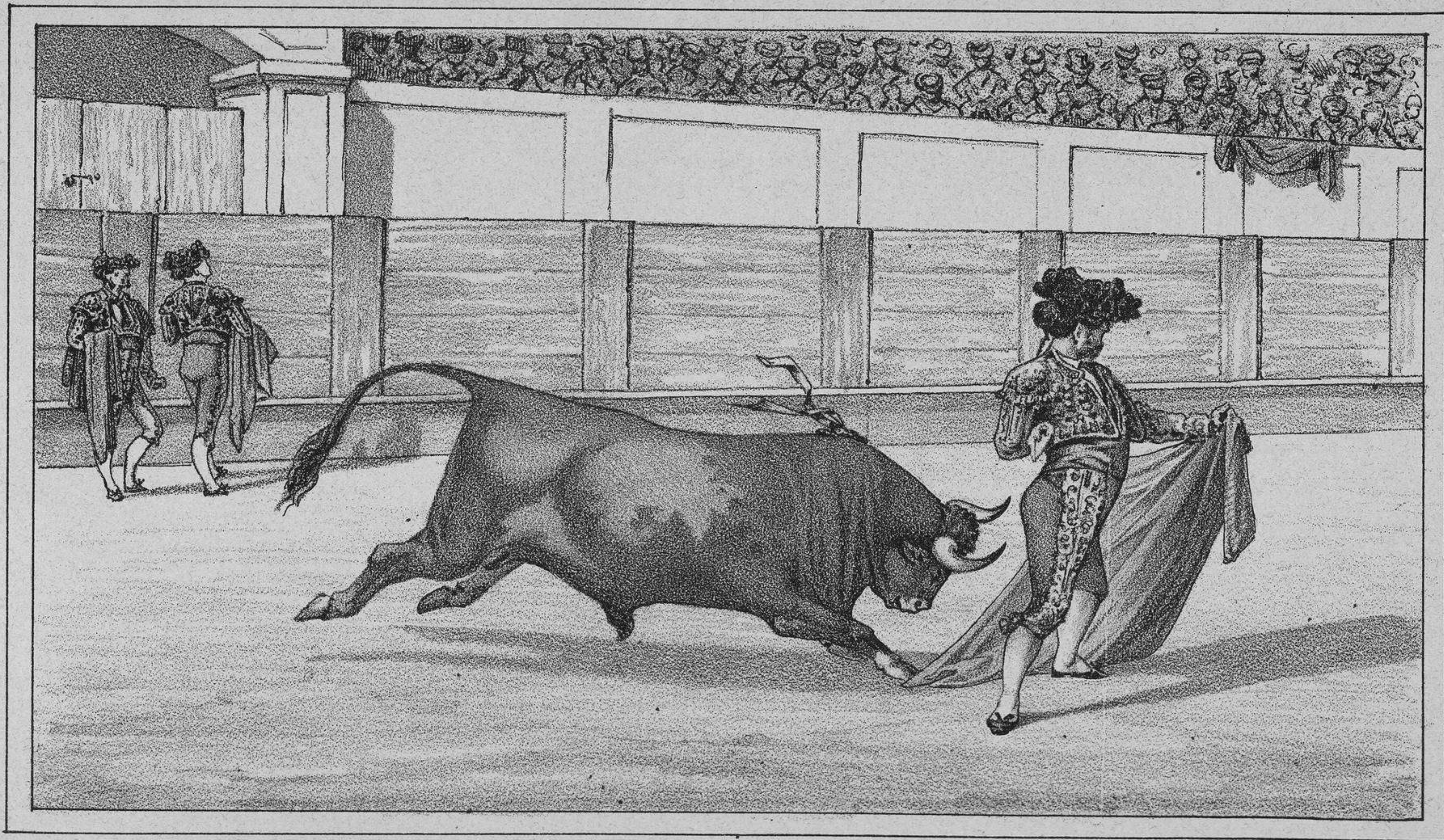




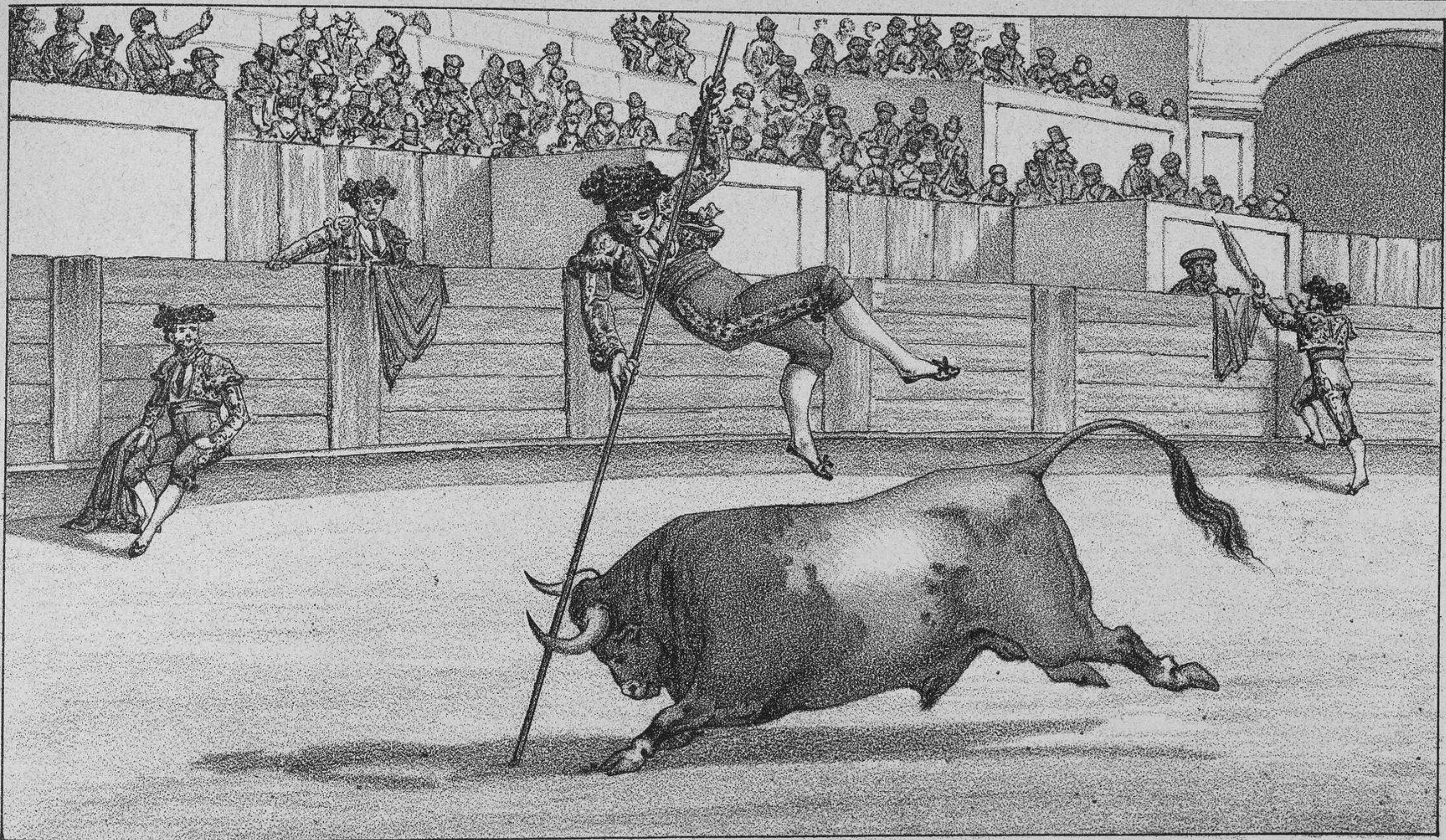
Capeo, suerte de veronica.



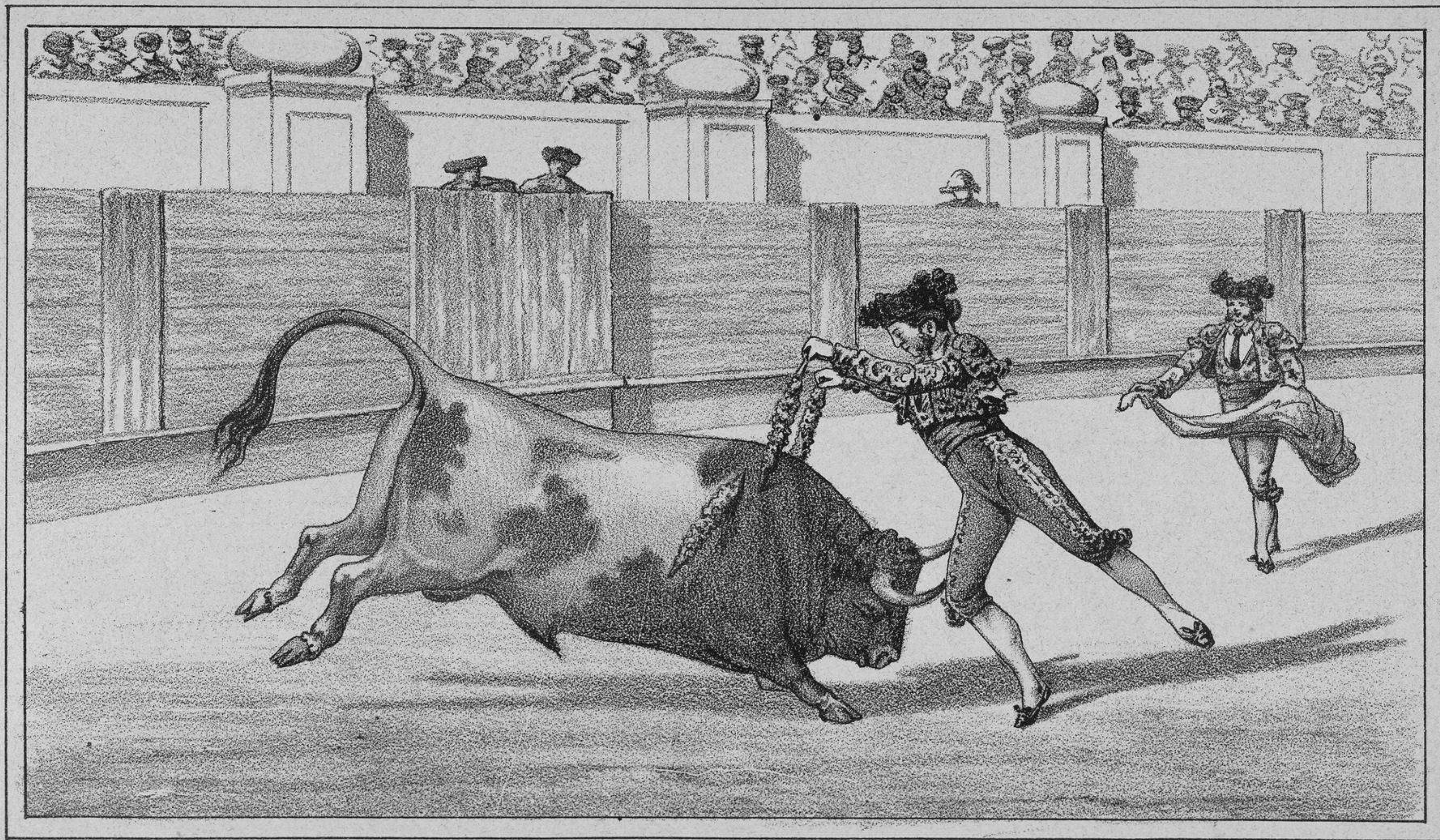
Capeo. Suerte de farol.



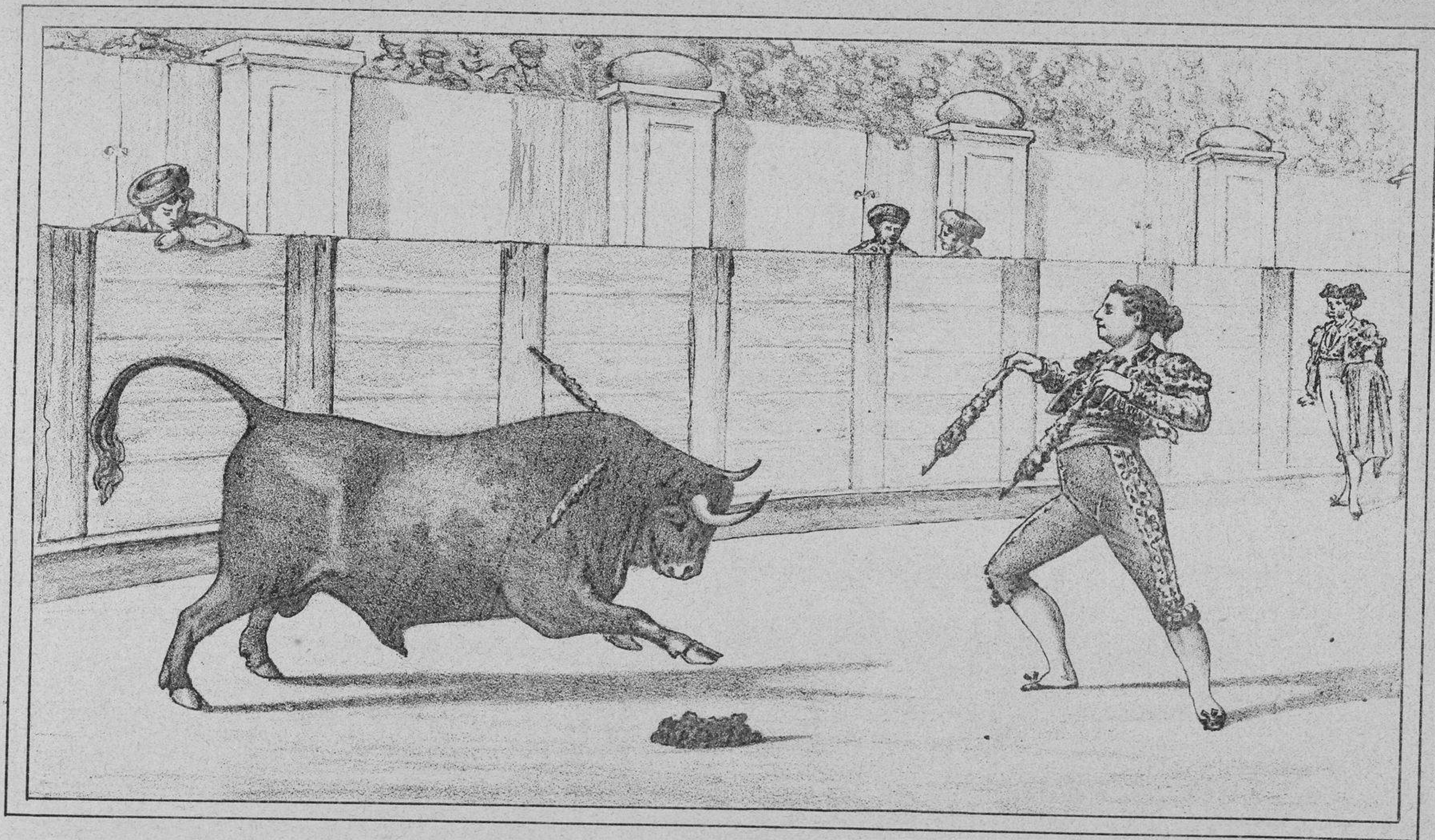
Capeo por detras.



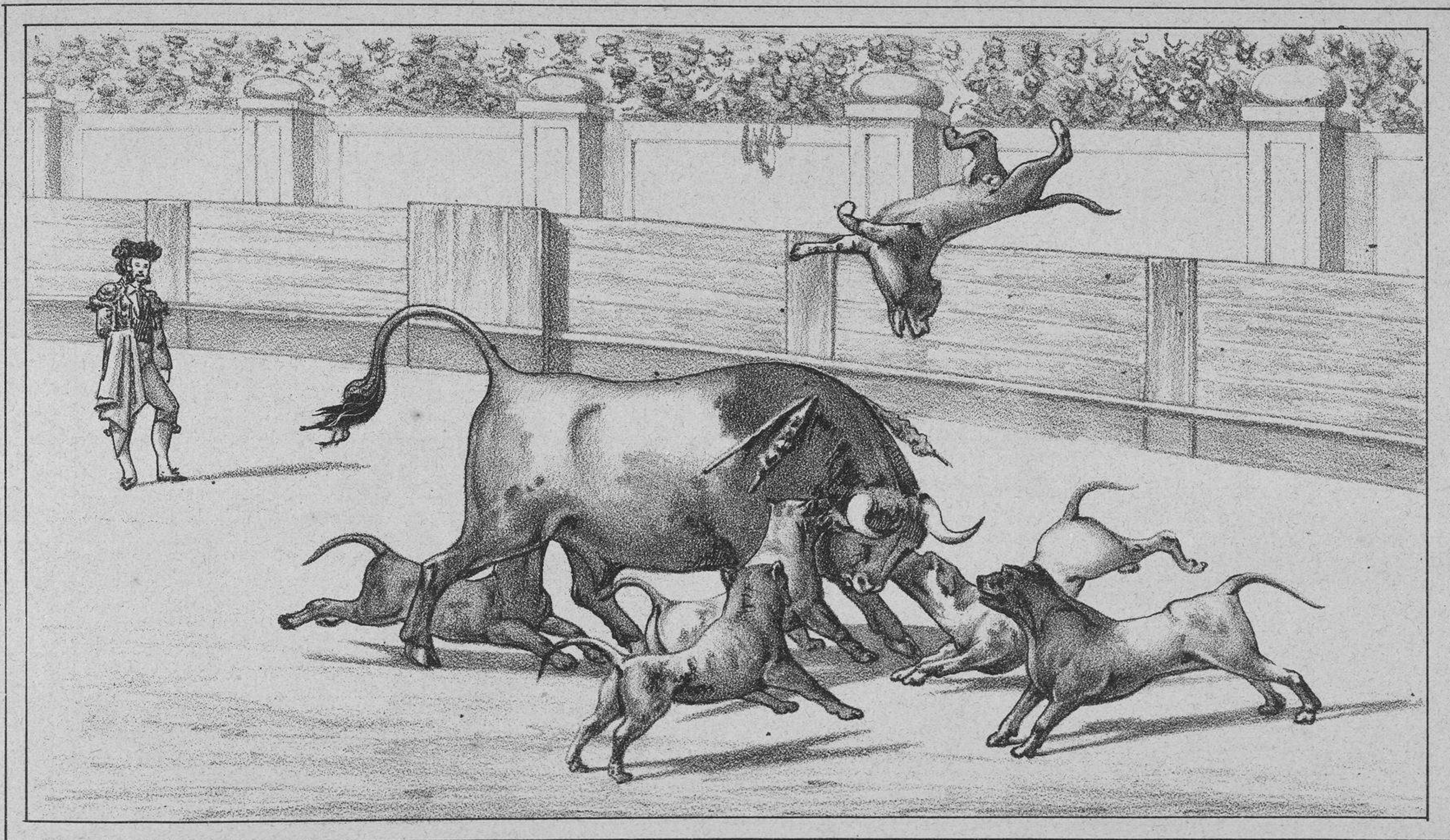
Salto de la garrocha.



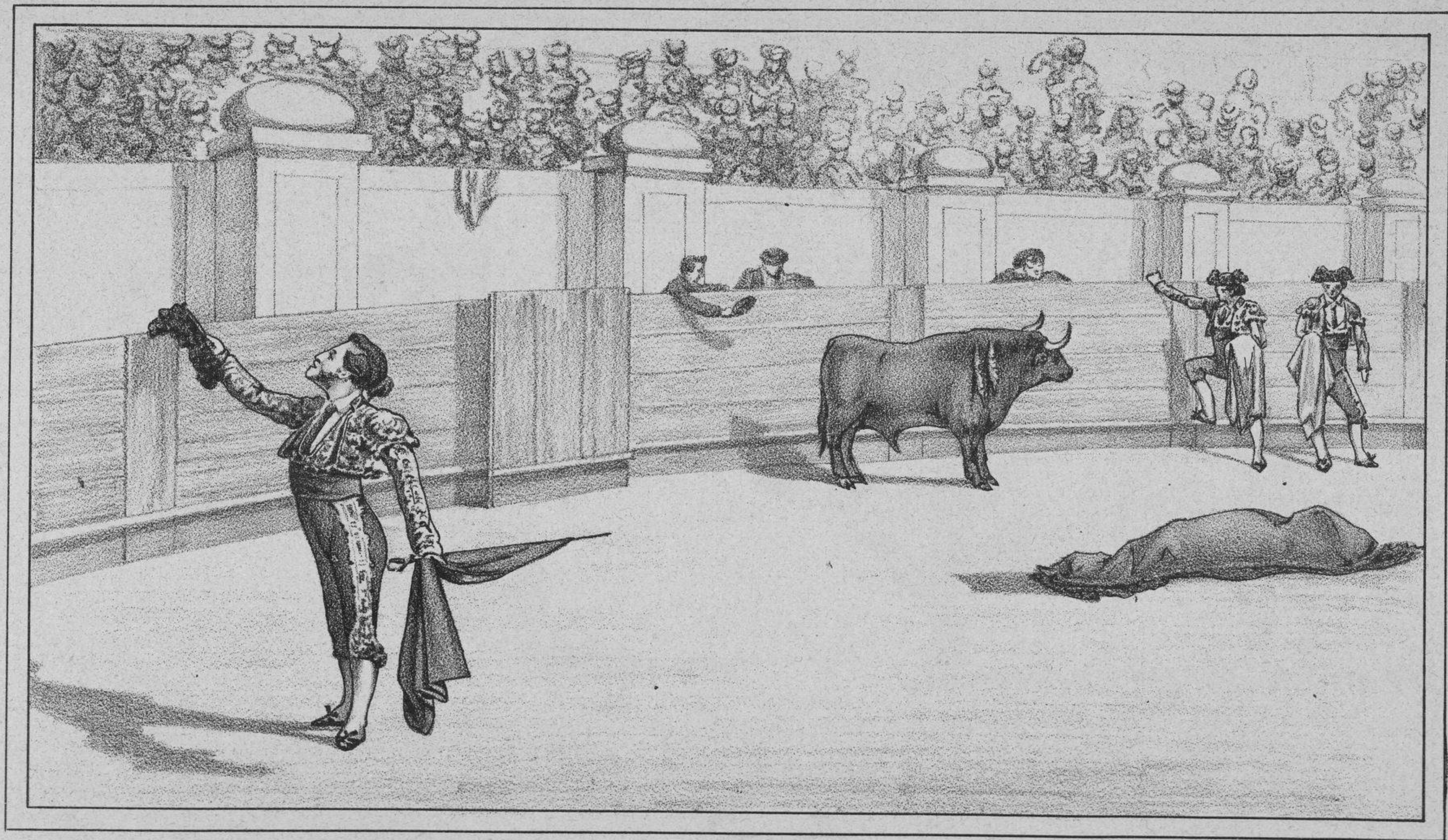
Suerte de banderillas al cuarteo.



Banderillas de frente cambiando.

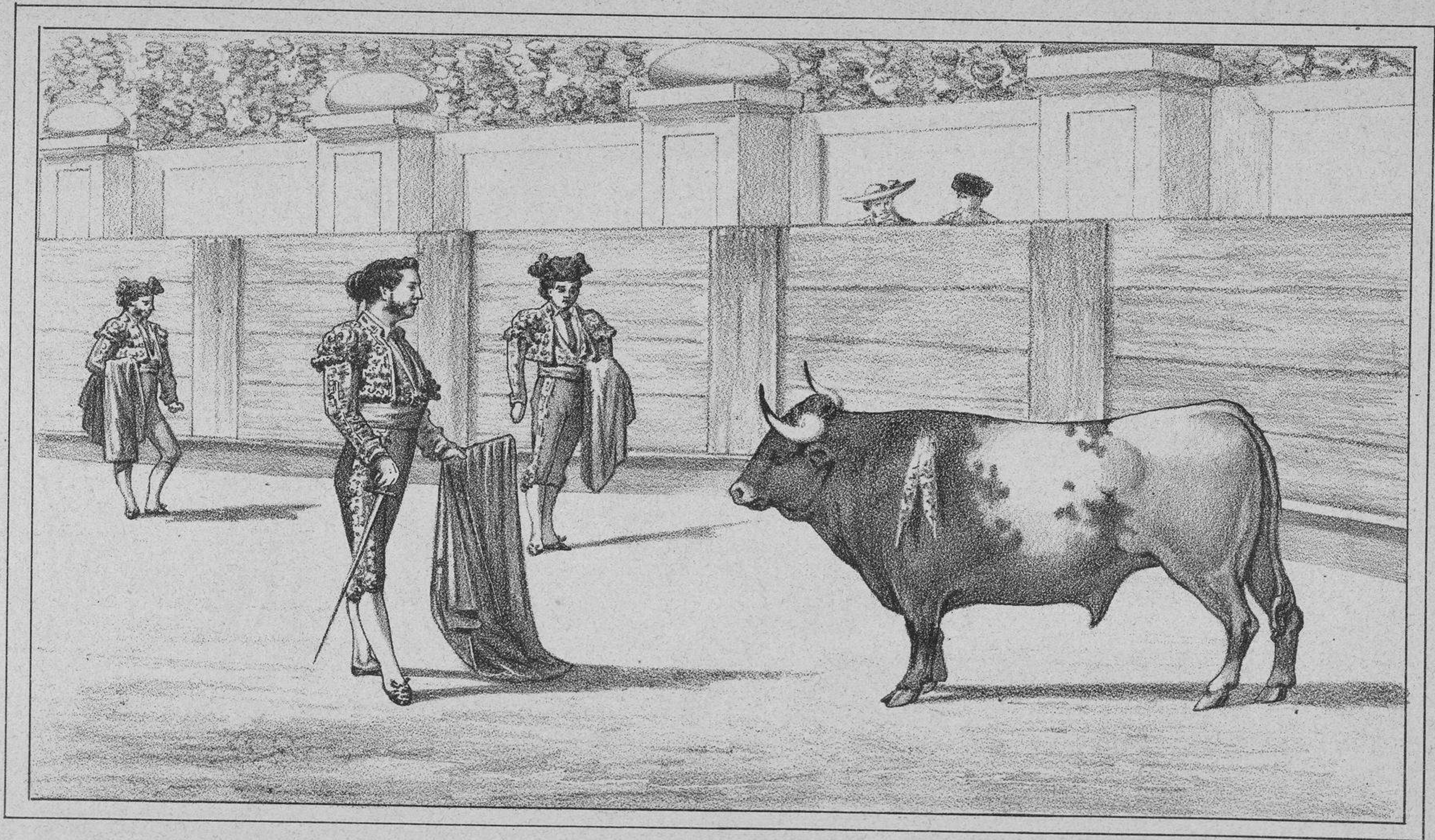


Sueltan perros al toro.

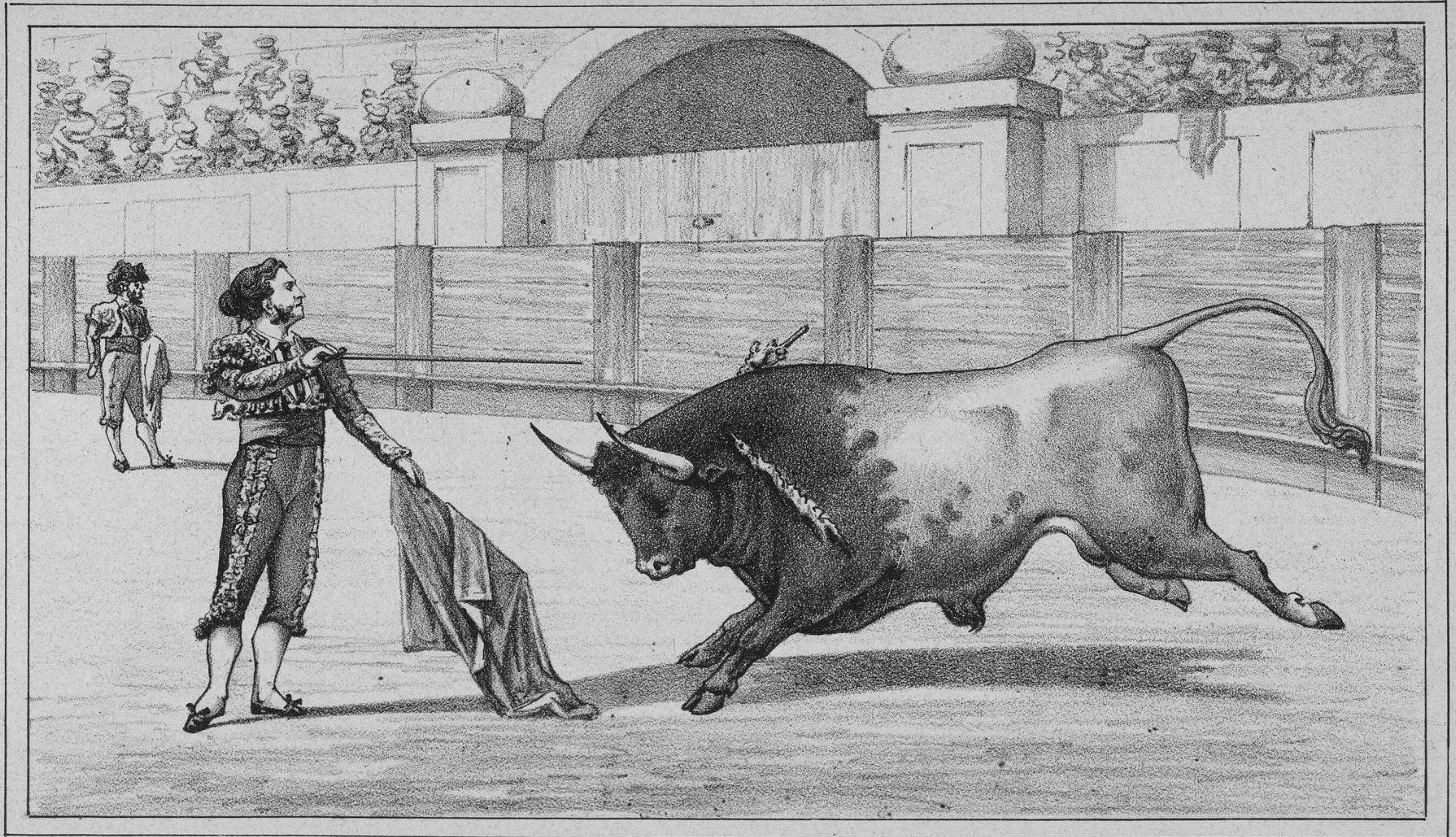


El espada brinda el toro.

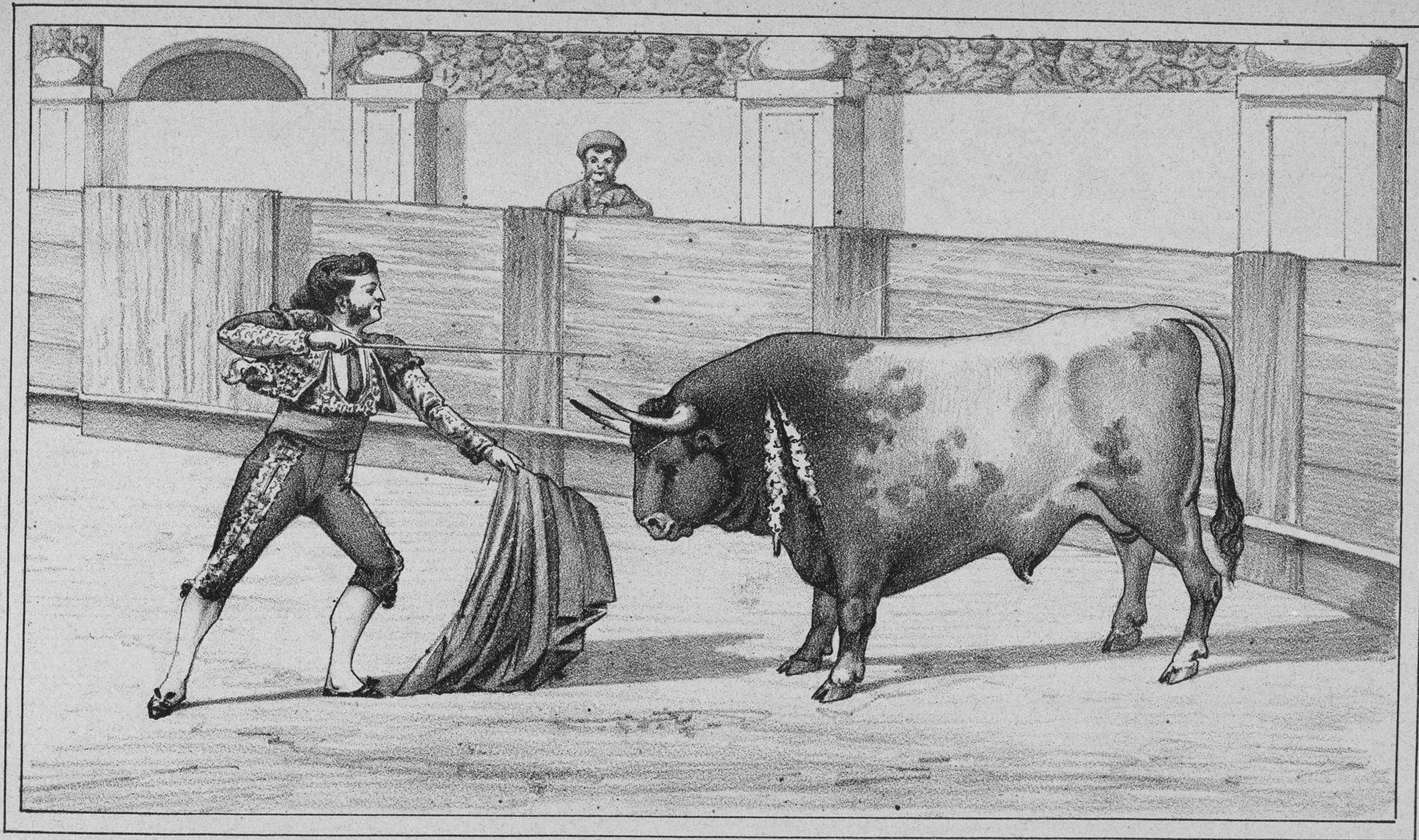




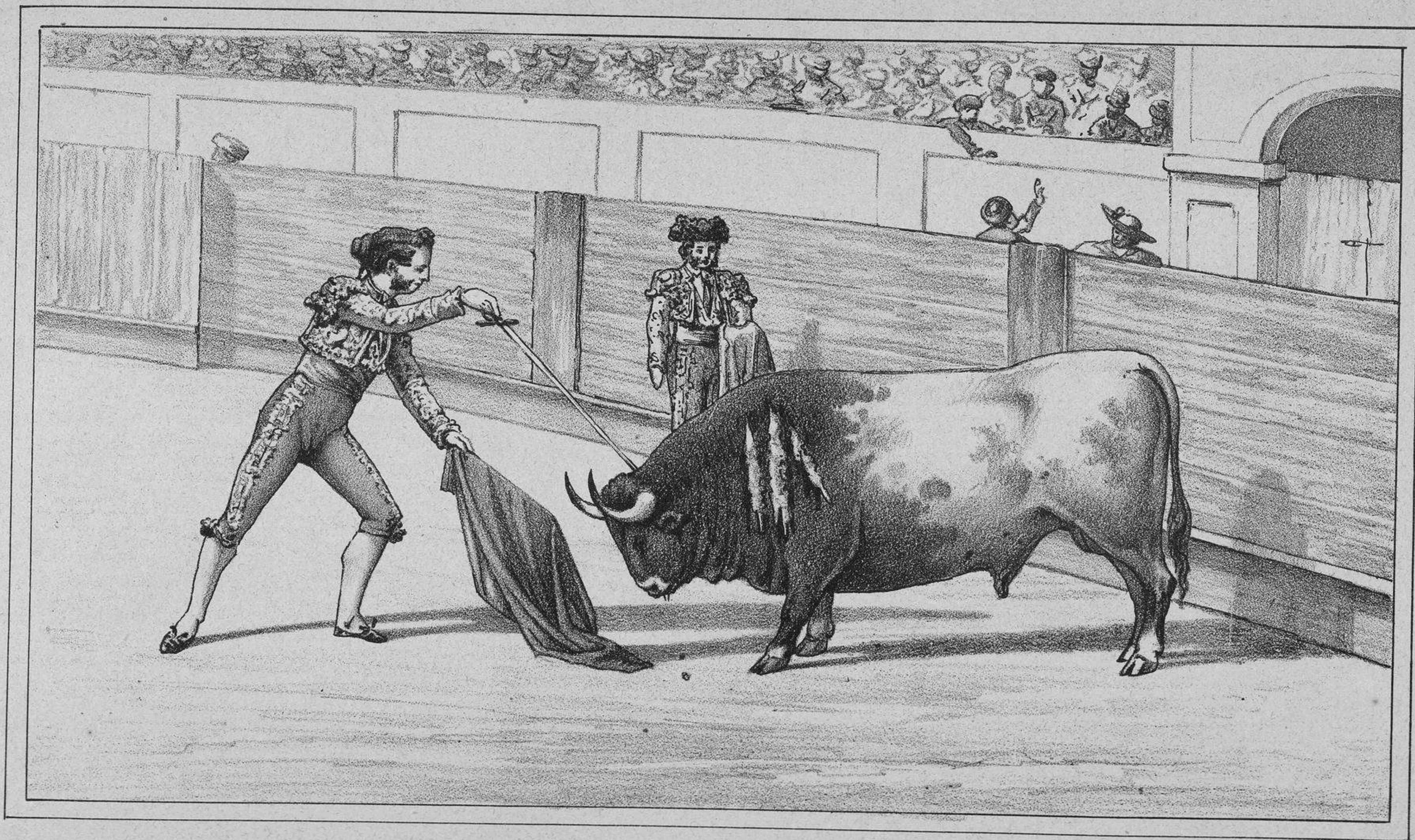
Cite para pasar de muleta.



Suerte de Recibir.



Suerte de Volapié.



Suerte del descabello.



El cachetero dando la puntilla.