

1 Contrabajo.

Melodia

F155

y

Momento Musical

de

== Schubert ==

Melodia.

Andte lento

mf

dim

Pr^o

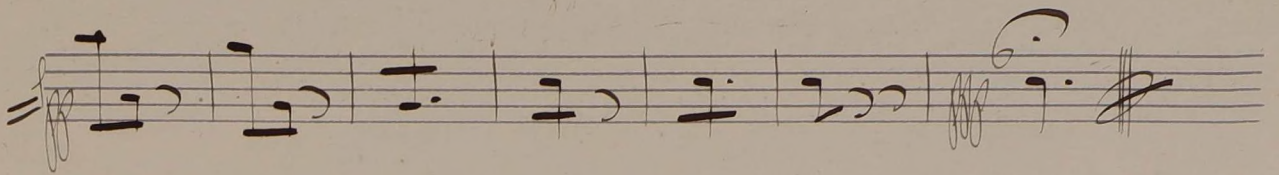
eres---

(arco)

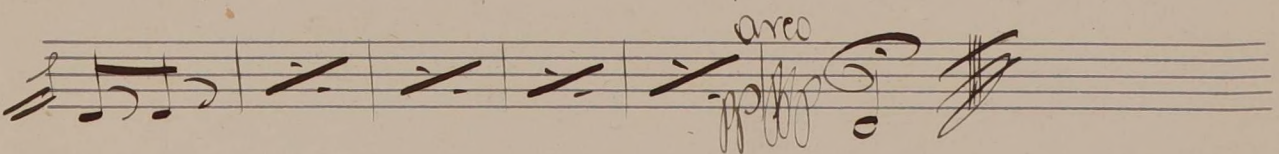
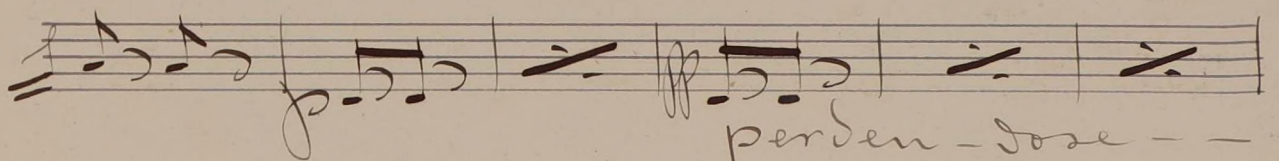
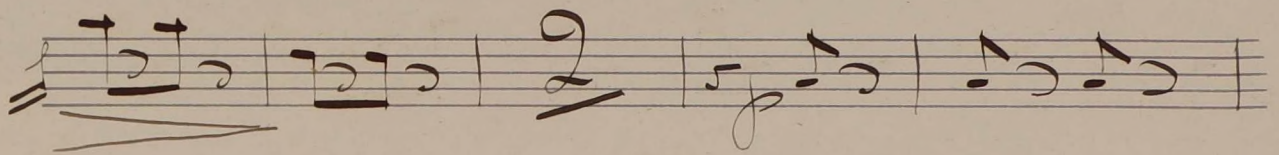
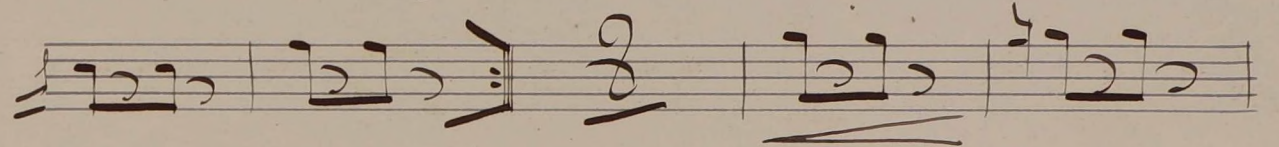
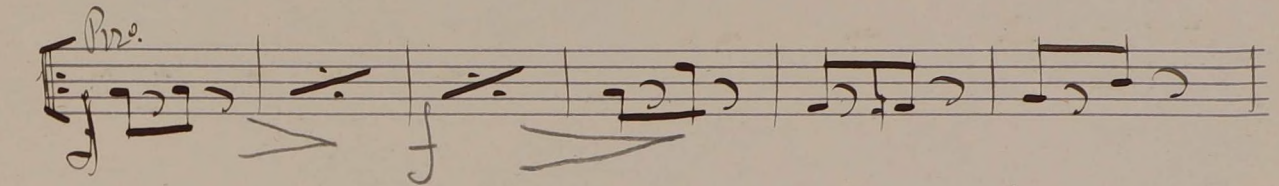
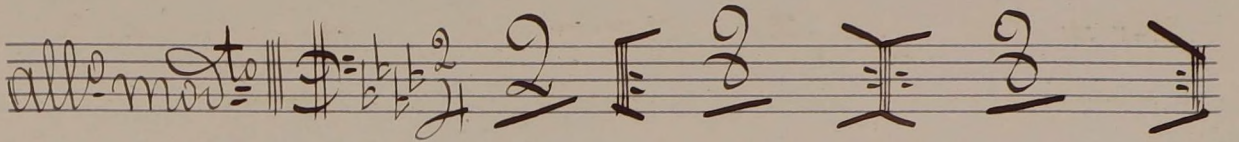
eres---

Passim moros

The image shows a handwritten musical score on ten staves. The title 'Melodia.' is written at the top. The first staff begins with the tempo marking 'Andte lento'. The score includes various musical notations such as treble clefs, time signatures, and dynamic markings like 'mf' and 'dim'. There are also performance instructions like '(arco)' and 'eres---'. The handwriting is in dark ink on aged paper.



Momento Musical.



morendo - - - rall - - -

