

Grampa 2^a

LA TABERNA

174

DE DEL Suerto

(Selección)

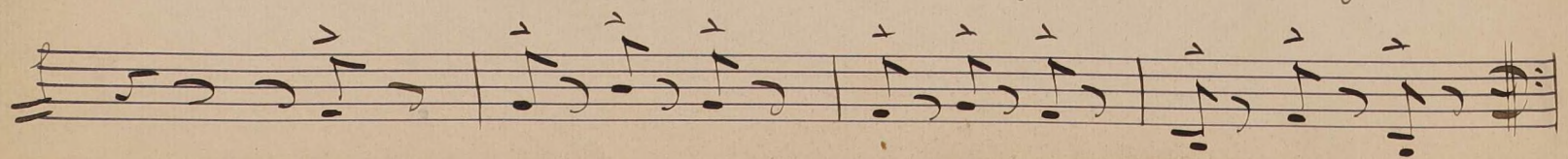
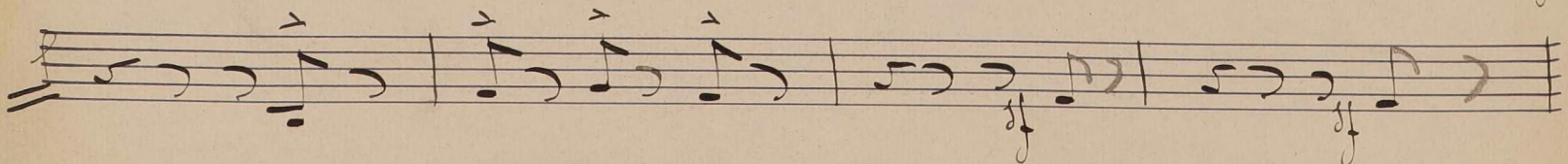
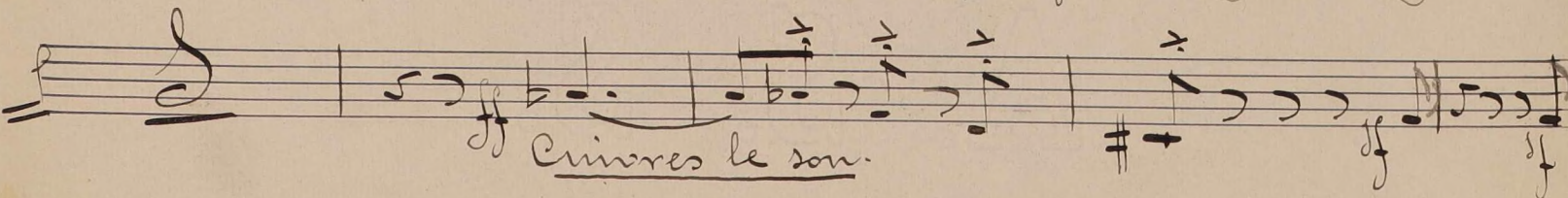
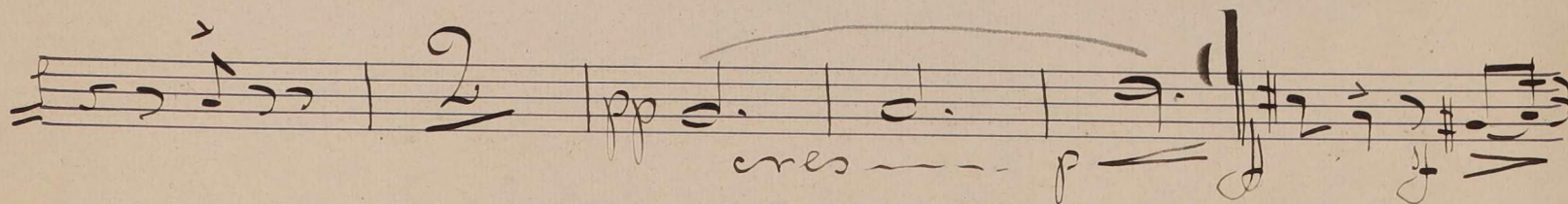
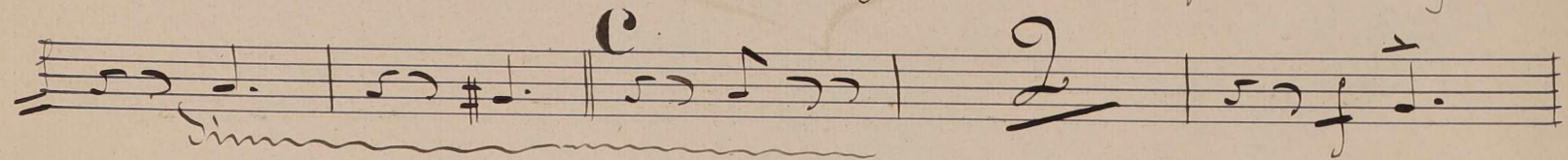
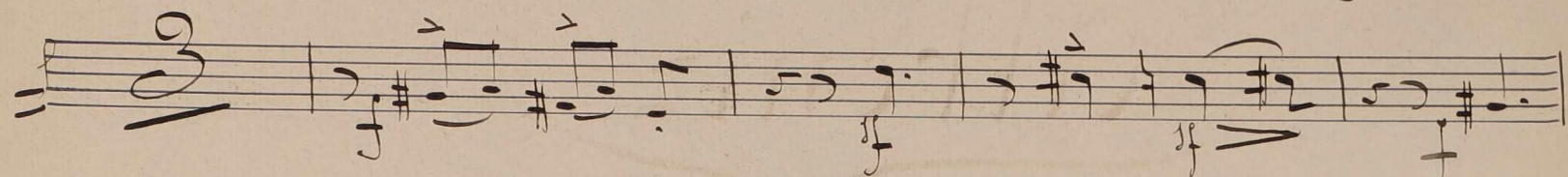
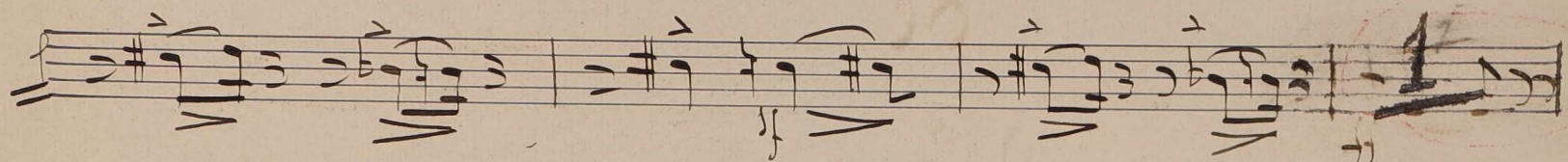
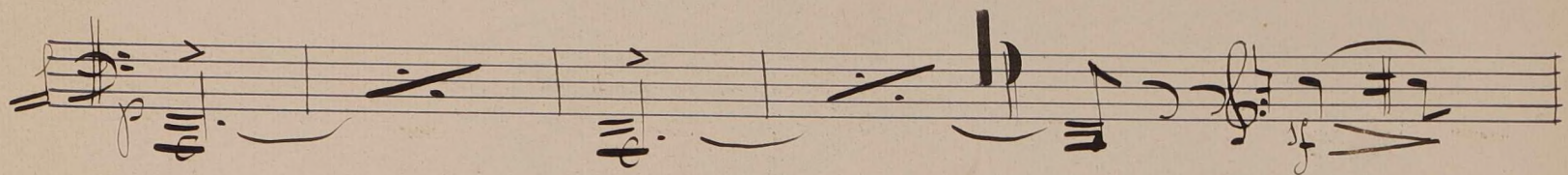
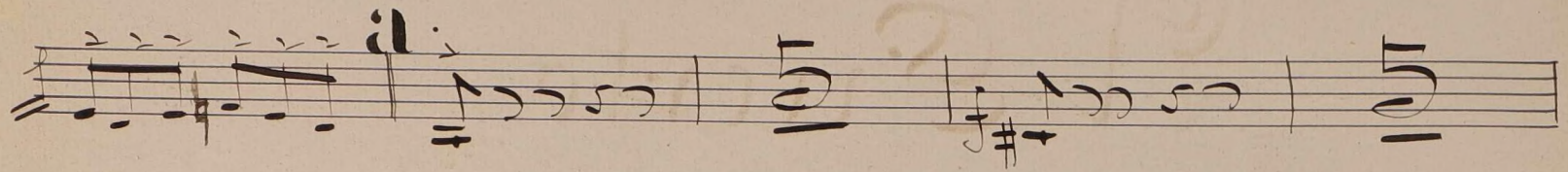
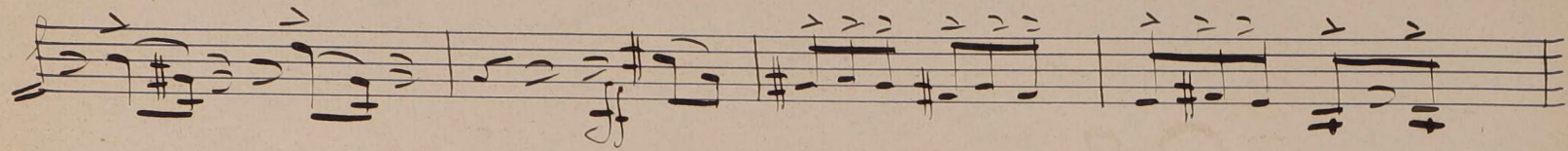
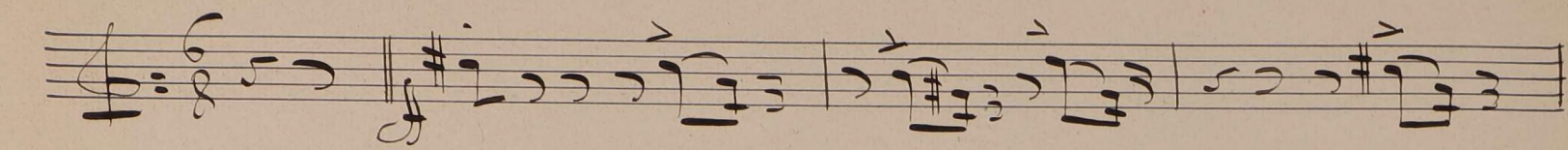


de

Albeniz.

Allegro Comodo =

(En Fa.)



Handwritten musical notation on a five-line staff, featuring various rhythmic values and dynamic markings.

Handwritten musical notation on a five-line staff, including a double bar line and dynamic markings.

Handwritten musical notation on a five-line staff, concluding with a fermata and the dynamic marking *mf*.

Handwritten musical notation on a five-line staff, starting with a dynamic marking of *pp* and ending with the word *eres*.

Handwritten musical notation on a five-line staff, featuring the instruction **H** *cuivres le son* and dynamic markings of *ff*.

Handwritten musical notation on a five-line staff, including dynamic markings of *ff* and *f*.

Handwritten musical notation on a five-line staff, starting with a dynamic marking of *pp*.

Handwritten musical notation on a five-line staff, including the instruction *cuivres* and dynamic markings of *f* and *eres molto*.

Handwritten musical notation on a five-line staff, featuring a dynamic marking of *f*.

Handwritten musical notation on a five-line staff, including a dynamic marking of *f* and the instruction *Diminu*.

Handwritten musical notation on a five-line staff, including dynamic markings of *f* and *mf*.

Handwritten musical notation on a five-line staff, featuring a large, decorative flourish.

K.

cras p *f* *f*

f *sim*

sim *p*

pp

meno 2 po *Quasi Andte* *(con Cordina)*

ritar

ritar

Lento *naturale*