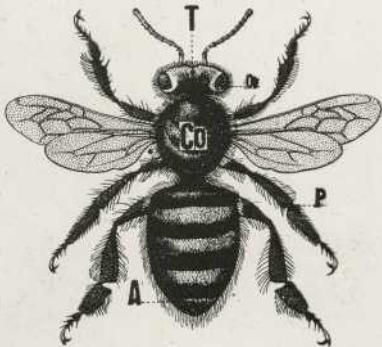


I. L'ABEILLE.

Différentes parties du Corps.



II . L'ESSAIM .
Colonie d'Abeilles .



III . REINE , OUVRIÈRE ,
FAUX - BOURDON .

R



B

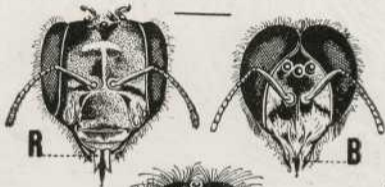


O



IV . LES TÊTES .

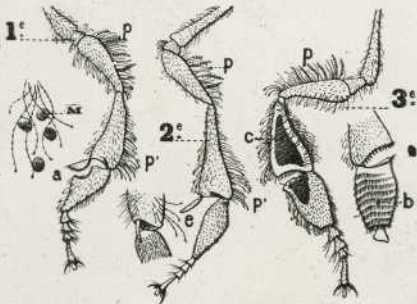
Reine , Ouvrière , Faux-bourdon



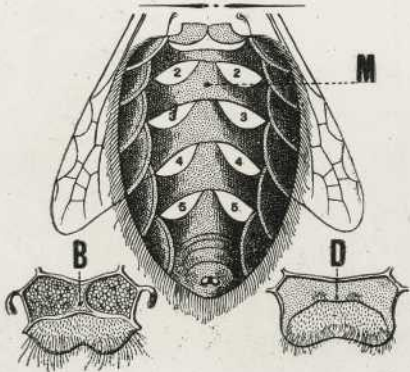
E. MAZO, à PARIS

languette

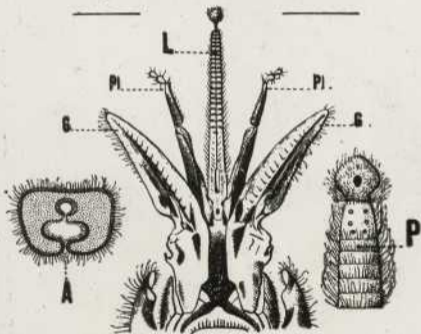
V. LES PATTES DE L'ABEILLE.



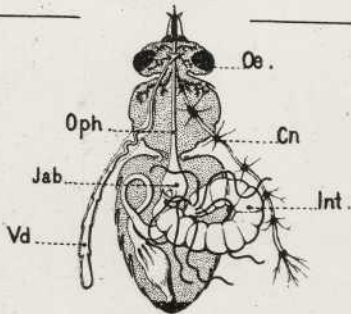
VI. GLANDES CIRIÈRES.



VII . LANGUE de L'ABEILLE .
et Pièces de la Bouche .

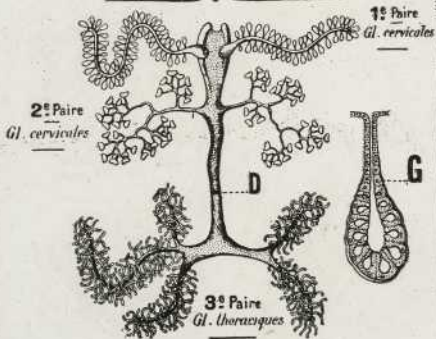


VIII. L'APPAREIL DIGESTIF de L'ABEILLE.

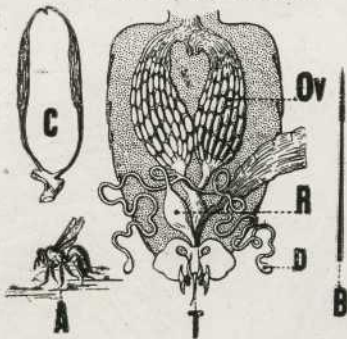


E. HAZO, à PARIS

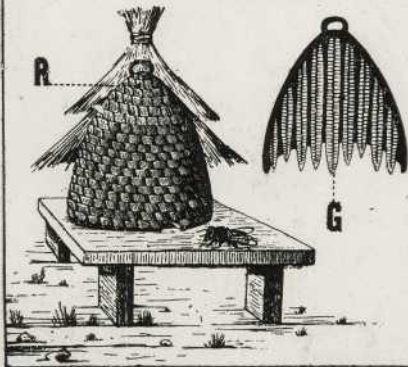
IX. LES GLANDES SALIVAIRES



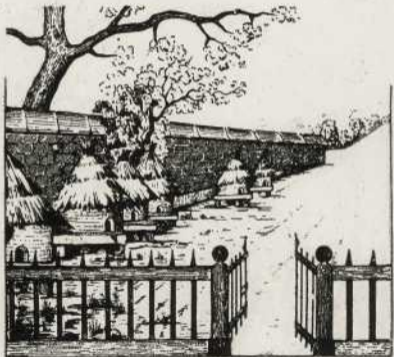
X. AIGUILLON et GLANDES
VENIMEUSES.



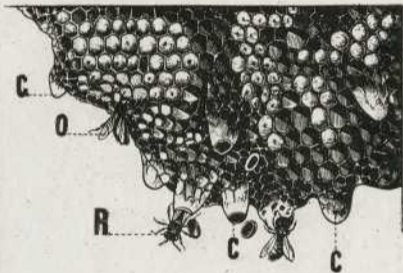
XI. LA RUCHE ANCIENNE.



XII . UN RUCHER PRIMITIF .

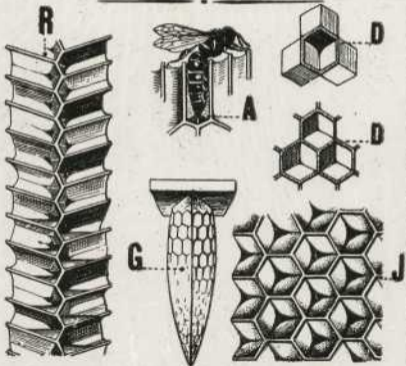


XIII. LES ALVÉOLES.

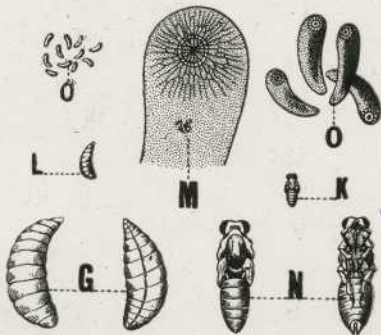


E. MAZO, PARIS

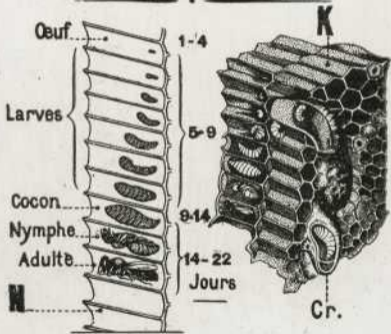
XIV. GÉOMÉTRIE de L'ABEILLE



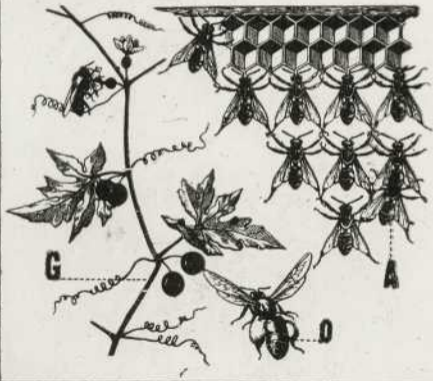
XV. LES ŒUFS et les LARVES



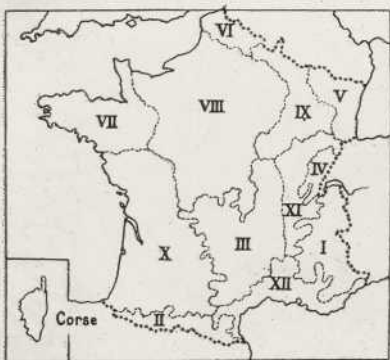
XVI. EVOLUTION DES LARVES



XVII. PRODUITS DES ABEILLES



XVIII. LES MIELS DE FRANCE



XIX. LA RUCHE A CADRES



XX. UN RUCHER MODERNE



XXI. ORGANISATION de la RUCHE .

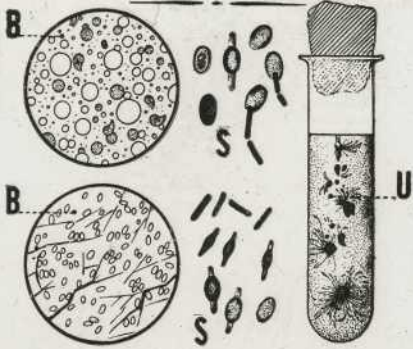
Jeunes
Soins intérieurs } Les Cirières .
 } Les Eleveuses .
 } Les Magasinières .

Vieilles
Soins extérieurs } Les Chercheuses .
 } Les Butineuses .
 } Les Nettoyeuses .
 } Les Ventileuses .
 } Les Gardiennes .

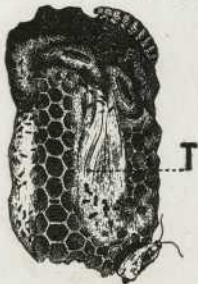
XXII. PLANTES MELLIFÈRES



XXIII. MALADIES des ABEILLES



XXIV. LES ENNEMIS
des ABEILLES.



E. MAZD, à PARIS