



Fougère. (Polypode).

Cordons vasculaires

Sclérenchyme



Sclérenchyme

Cordons vasculaires

A

B

Coupes transversales  
de tiges de fougère

2

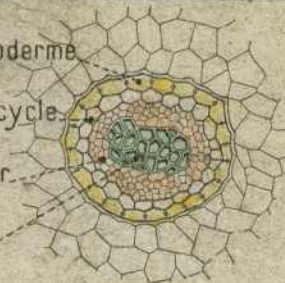
E. MAZO. PARIS

Endoderme

Péricycle

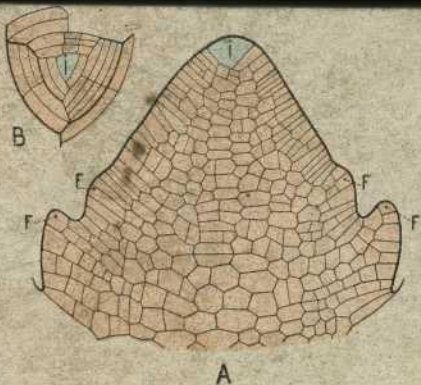
Liber

Bois



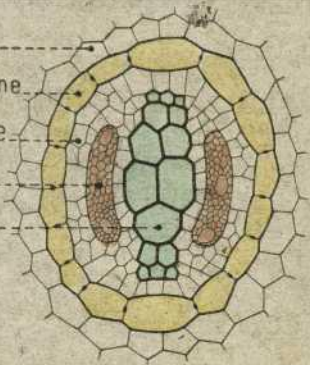
*Vaisseaux  
scalariformes.*

Cordon vasculaire  
d'une tige de Fougère.

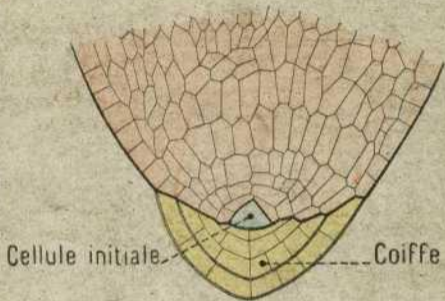


Croissance d'une tige de Fougère

Ecorce  
Endoderme  
Péricycle  
Liber  
Bois



Cylindre central  
d'une racine de fougère. (Coupe tran<sup>se</sup>).



Cellule initiale

Coiffe

Sommet d'une racine. (Coupé longit<sup>le</sup>).

A



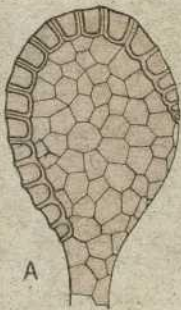
B



C

Sores de fougère

7



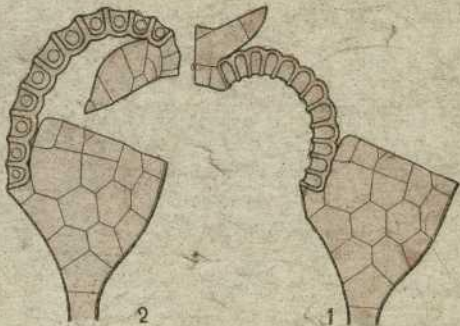
A



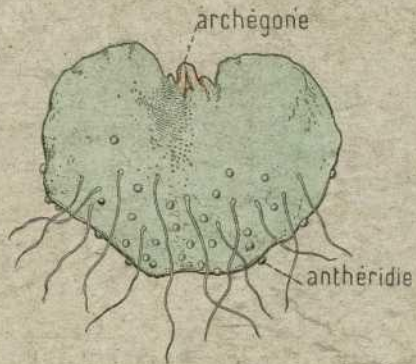
B

Sporange de fougère.





Déhiscence d'un sporange.



Un prothalle de fougère

# DE FONDERS

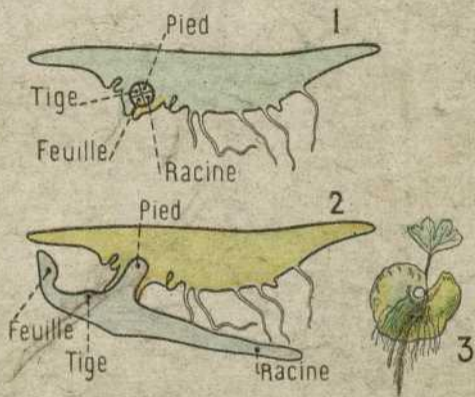
Antheidie

Archegone

A

B





Développement de l'œuf.