

12

Flauta 8^a

344

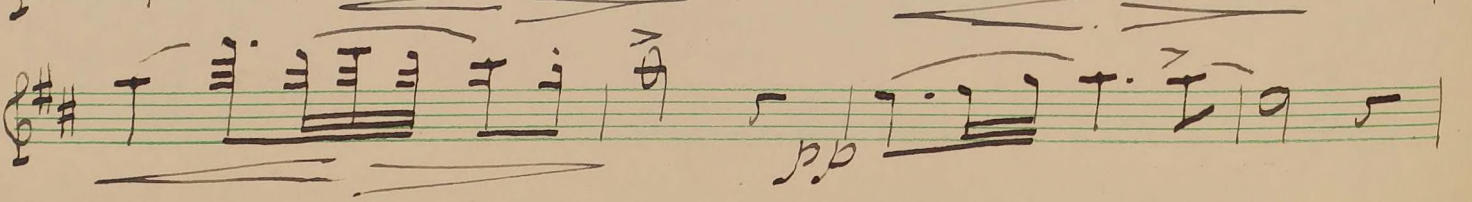
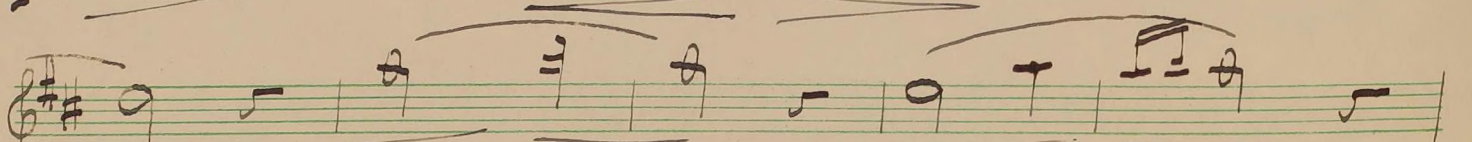
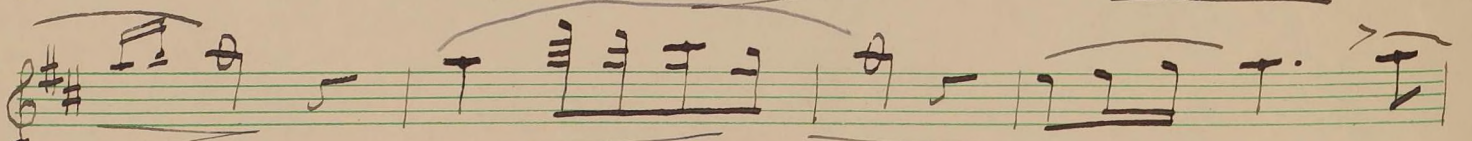
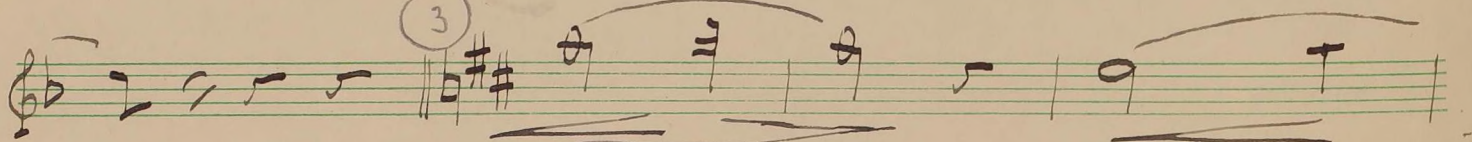
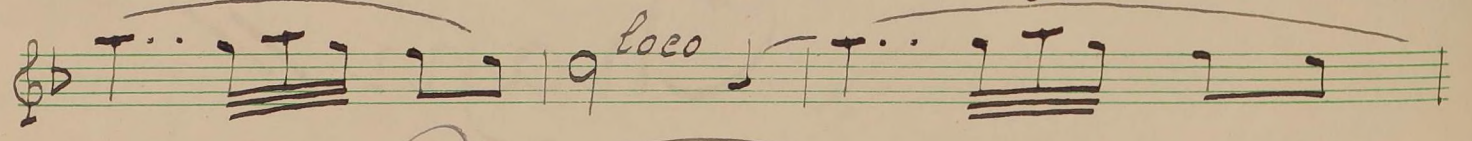
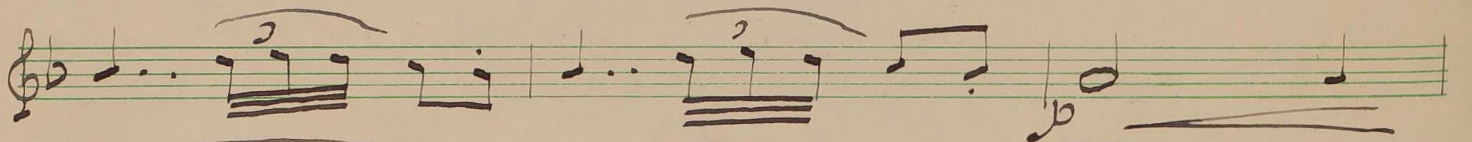
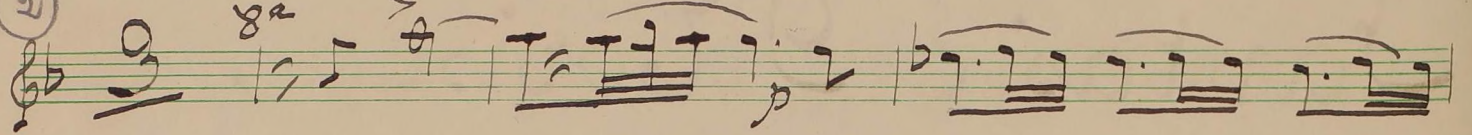
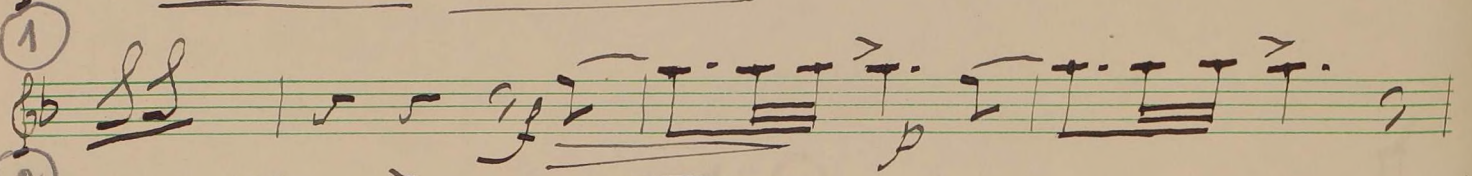
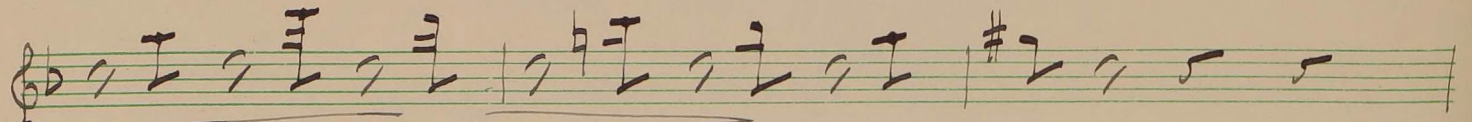
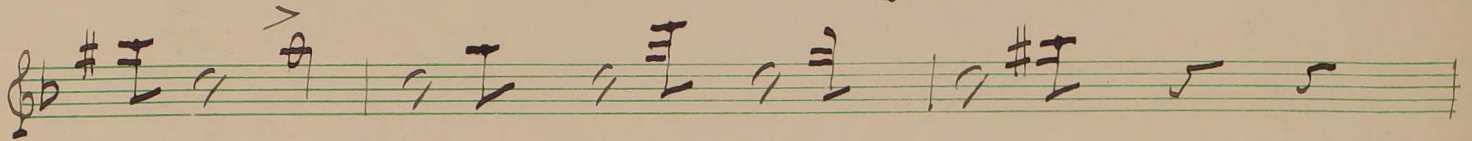


Fantasia Morisca.

Chari

A' Granada //

And^{te} cantabili



4

8^{va} lo^{co} 8^{va} lo^{co}

8^{va} lo^{co}

8^{va} lo^{co} pp

lo^{co} pp

5

dim^{iss} p

8^{va} f

2

5

6

All:to

All: mod:to

7

8a

8a

loco

pp

8a

8^a

8^a

8^a

8^a

loco

loco

8^a

Handwritten musical score consisting of 12 staves. The music is written in treble clef with a key signature of two sharps (F# and C#). The tempo or performance instruction is marked as *82* at the beginning of each staff. The score includes various rhythmic patterns, including eighth and sixteenth notes, rests, and dynamic markings such as *tr* (trill) and *5* (fingerings). Measure numbers 8, 10, 11, and 12 are circled in the original manuscript. The final staff concludes with a large number 8, possibly indicating the end of a section or a specific measure.

13 8^a

loco

Handwritten musical score for measures 13-14. The music is written on five staves in treble clef with a key signature of two sharps (F# and C#). The first staff begins with a treble clef and a key signature of two sharps. The notation includes quarter notes, eighth notes, and sixteenth notes, often beamed together. There are several rests and dynamic markings such as *loco* and *8^a*. The piece concludes with a double bar line.

14

Handwritten musical score for measures 15-16. The music is written on five staves in treble clef with a key signature of two sharps (F# and C#). The notation includes quarter notes, eighth notes, and sixteenth notes, often beamed together. There are several rests and dynamic markings such as *loco* and *8^a*. The piece concludes with a double bar line.

8^a
pp
#

Meditacion

Modto # # c 8^a

loco

Allto modto

8^a

8^a 158

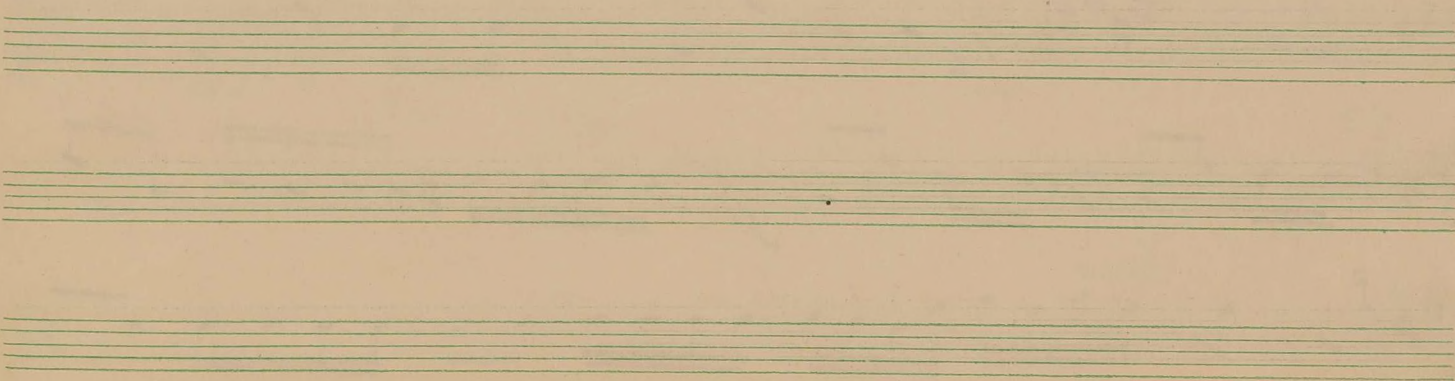
8^a

8^a

8^a

8^a

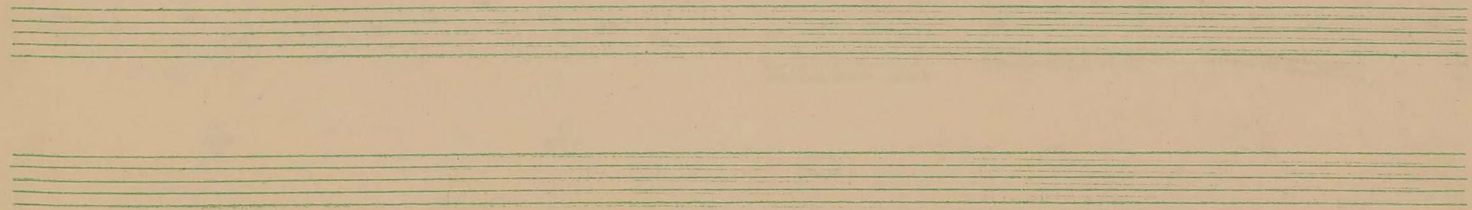
Handwritten musical score in G major (one sharp) and 4/4 time. The score consists of ten staves of music. The first staff begins with a circled '4' and a circled '3'. The notation includes various rhythmic values, slurs, and dynamic markings such as *pp*, *8^a*, *tr*, *loco*, and *Largo*. The piece concludes with a double bar line on the tenth staff.



8^a

loco

Handwritten musical score for guitar, consisting of ten staves of music. The key signature is G major (one sharp). The notation includes various rhythmic values, slurs, and dynamic markings such as *loco* and *8^a*. The music is written in a style characteristic of early 20th-century guitar notation.



Final =

Mod^{to} 8^{va}

8^{va}

8^{va}

8^{va} 1 *loco*

8^{va} 2 8^{va} *All^o mod^{to}*

8^{va} *loco*

8^{va} 3 8^{va}

A handwritten musical score consisting of 12 staves. Each staff begins with a treble clef, a key signature of two sharps (F# and C#), and a time signature of 8/2. The notation includes various rhythmic values such as eighth and sixteenth notes, often beamed together, and rests. Some staves feature slurs and accents. Circled numbers 4, 5, and 6 are placed above specific notes on the fourth, fifth, and sixth staves, respectively. The paper shows signs of age, including some staining and a small mark at the top right.

A handwritten musical score consisting of 12 staves. The music is written in a treble clef with a key signature of two sharps (F# and C#). The notation includes various rhythmic values, slurs, and dynamic markings such as *f* and *ff*. Several measures contain circled numbers: a '4' in the 7th staff, a '7' in the 8th staff, and an '8' in the 9th staff. The final staff contains several measures with diagonal slashes, indicating a continuation or end of a section. The paper shows signs of age, with some staining and a slightly yellowed tone.

8^a

8^a

8^a

8^a 10

Presto

8^a

8^a

8^a

8^a

8^a

loco