

Cello I.

p ma marcato

cresc.

f f f f f f f f

f f ff f f f f f f f

cresc. *ff* *> f*

Meno mosso.

f ff f f

ff

Più Allegro (a 2 batt) e poco agitato.

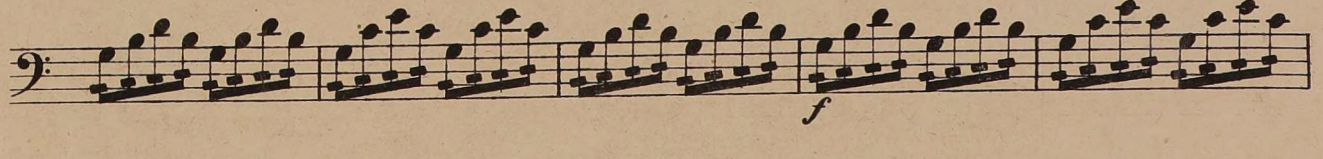
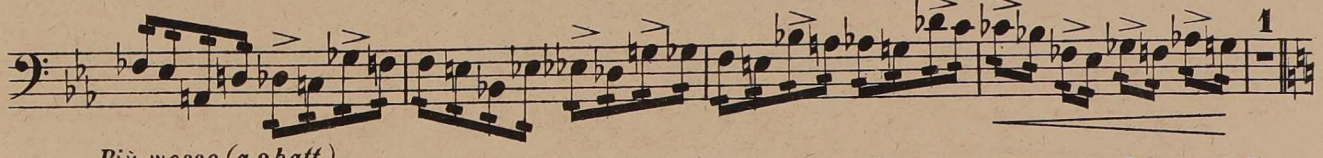
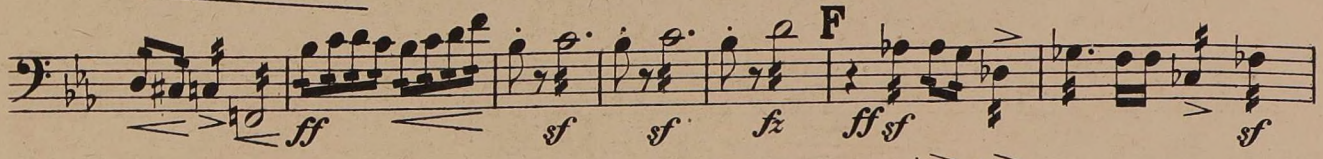
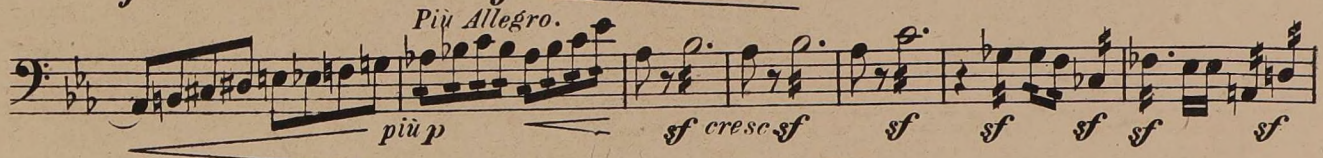
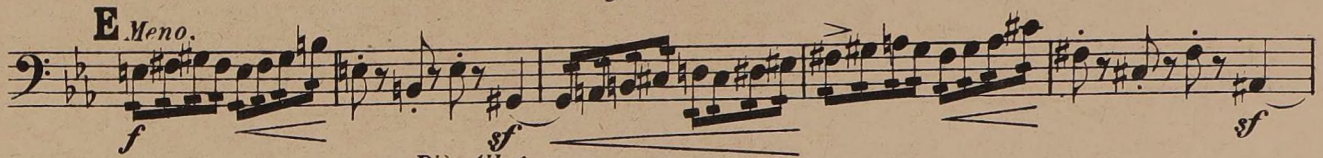
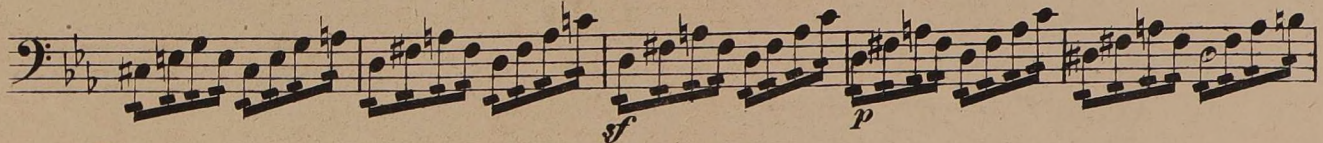
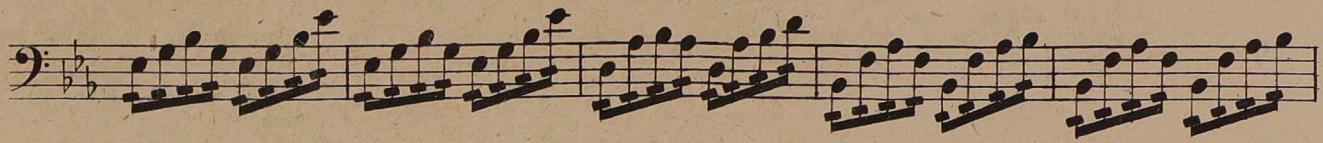
f f f

f f f

p

D

mf



Cello I.

G *Più mosso agitato.*

sf f f f cresc.

molto dim. Più lento. **2**

ff f ff pp

pizz. 3 5 1 Allargando.

p p sf semp. pizz.

dim. molto e smorz al ppp rit.

Lento ma non troppo.

arco

1 dolce espress. dim.

f molto cresc. f p poco cresc. ed acceler.

cresc.

Largamente.

fff sf sf sf molto

dim al pp pp ppp molto espress. rall. ppp

sempre ppp ppp dim al ppp