

3

C. bajo.

263

Preludio

de

La boda de Luis Alonso.

Intro

G. Gimenez



Allegretto.

11

2

3 Pizz

4

5

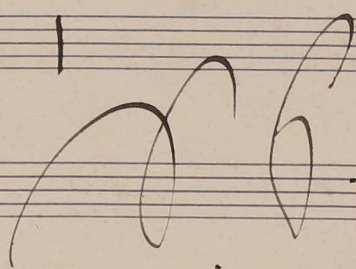
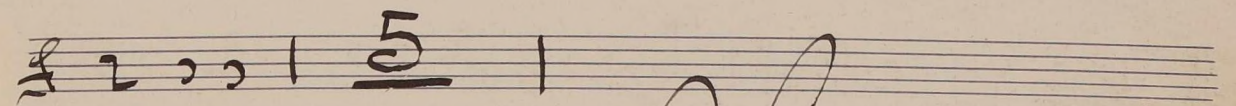
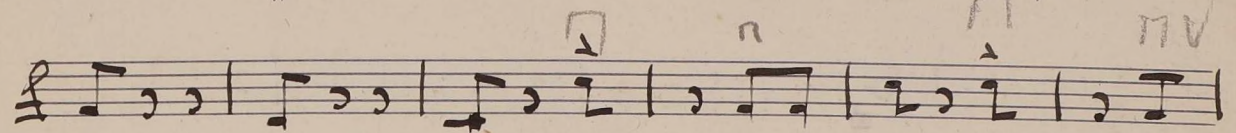
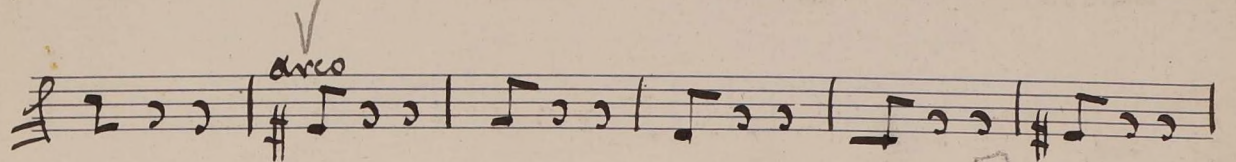
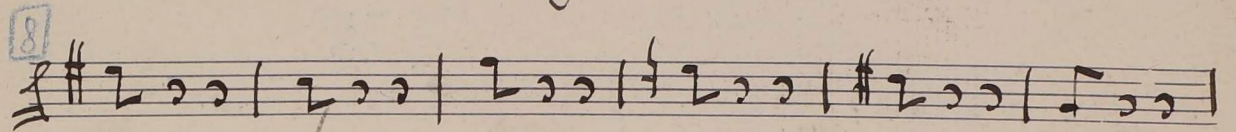
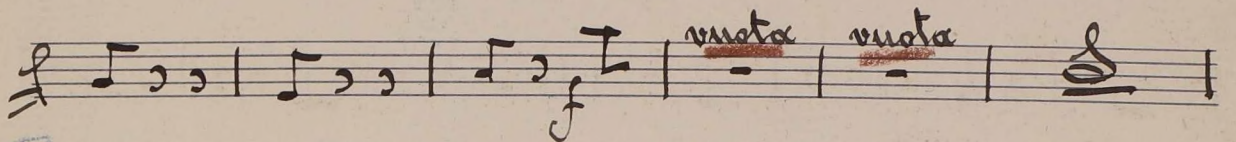
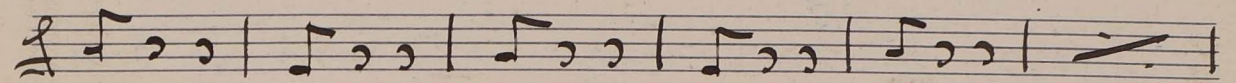
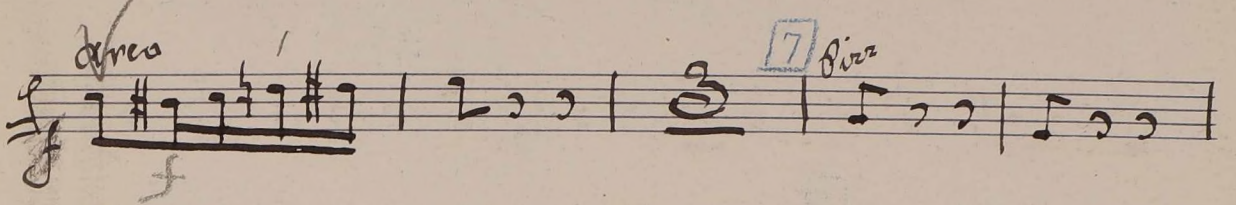
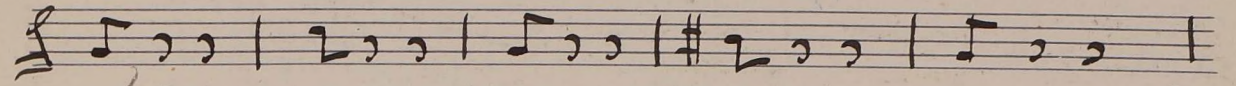
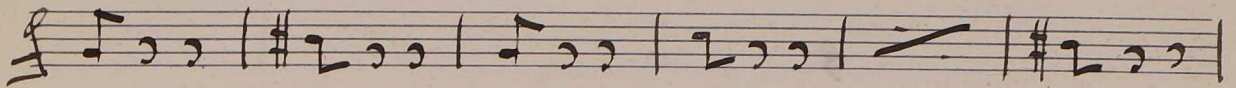
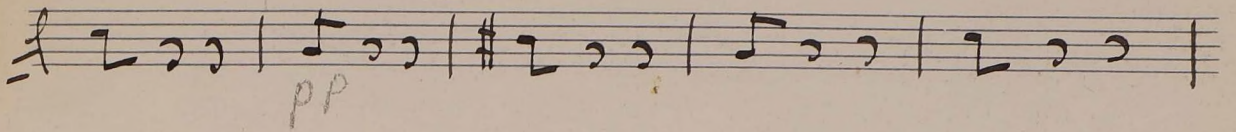
mf

p

cres

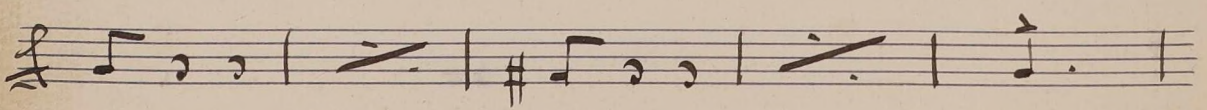
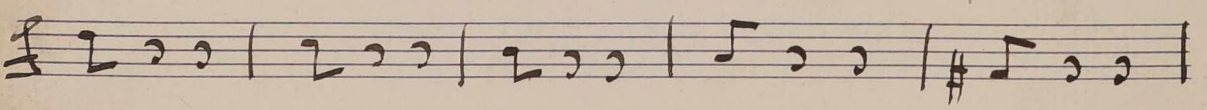
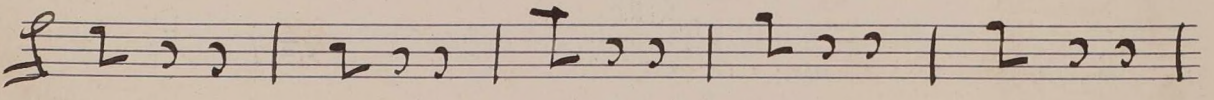
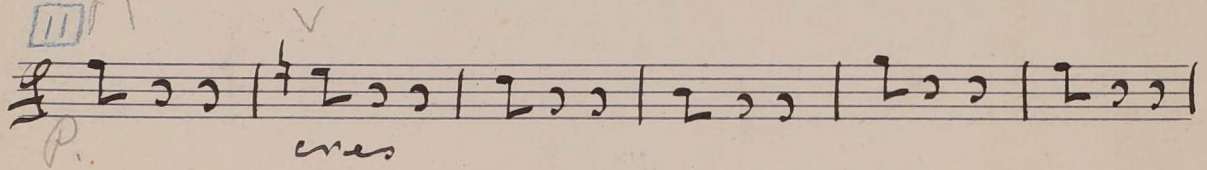
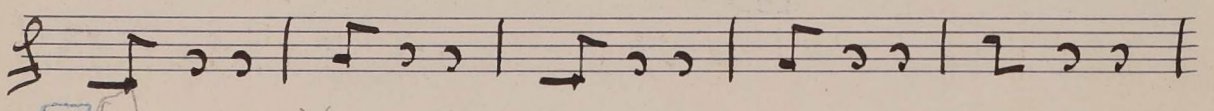
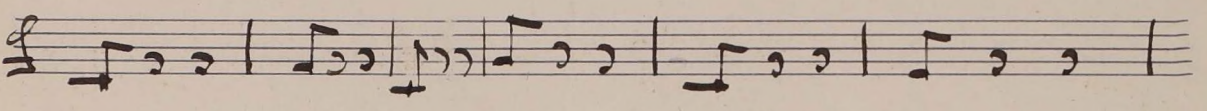
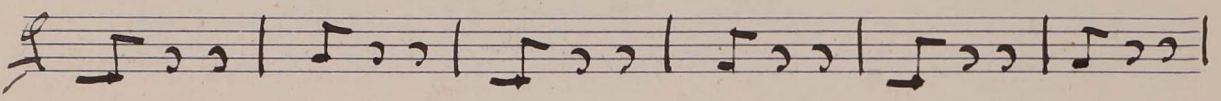
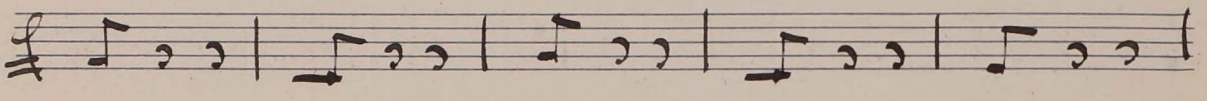
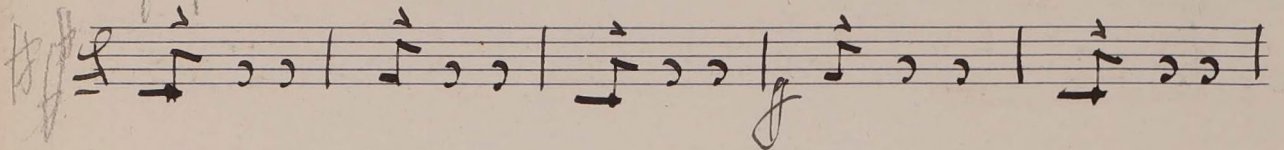
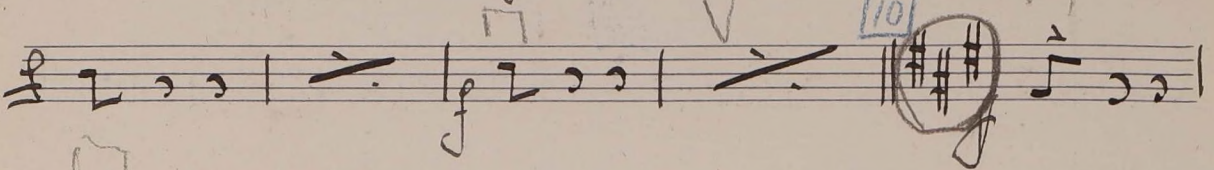
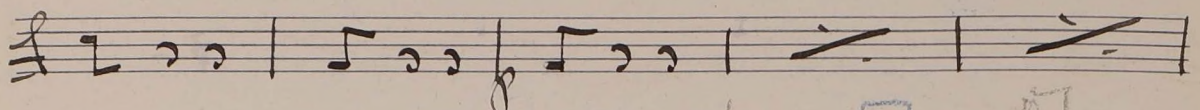
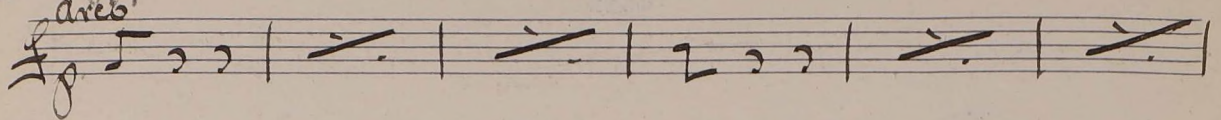
Ami

6



9

5
arco



12

13

14 *atpō*

rall

15

16

All^o - meso con brio

17

Musical staff with notes and rests.

Musical staff with notes and rests.

Musical staff with notes and rests, including fingerings 1, 2, 3, 4, 5 and a circled number 18.

Musical staff with notes and rests, including the word *Pizz*.

Musical staff with notes and rests.

Musical staff with notes and rests, including a circled number 19 and the word *arco*.

Musical staff with notes and rests.

Musical staff with notes and rests.

Musical staff with notes and rests, including a circled number 20.

Musical staff with notes and rests, including a circled number 21 and the word *Pizz*.

Musical staff with notes and rests.

Musical staff with notes and rests, including the word *arco*.

Musical staff with notes and slurs, numbered 1 through 6.

22

Musical staff with notes and slurs, starting with a dynamic marking *f*.

23

Musical staff with notes and slurs, ending with a double bar line.

24 arco

Musical staff with notes and slurs, starting with a dynamic marking *f* and a circled *pp22*.

mes

25

Musical staff with notes and slurs, starting with a dynamic marking *p*.

Musical staff with notes and slurs, numbered 1 through 4.

Musical staff with notes and slurs.

26

Musical staff with notes and slurs.

Musical staff with notes and slurs.

27

Musical staff with notes and slurs, ending with a dynamic marking *pp*.

Musical staff with notes and slurs, starting with a dynamic marking *f* and ending with a large flourish.