

4

C. Bajo.

244

Petite Suite

de

Borodine.









*riten*

*al tempo*

**C**

*mp*

*mp*

*Meno  
Mosso*

**S. Pizz**

*arco*

**C**

*mp*

*mp*

*rall*

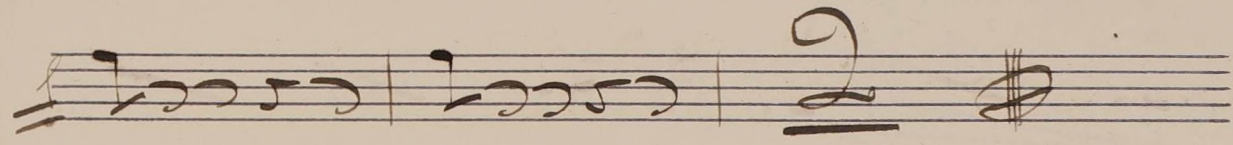
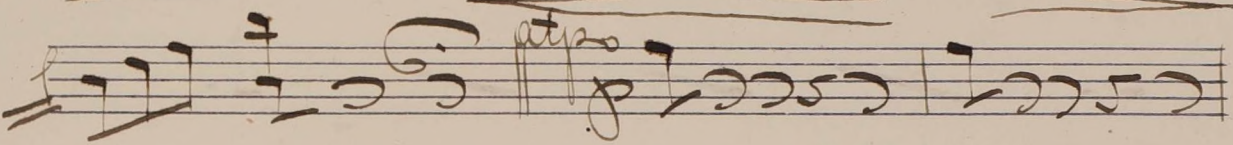
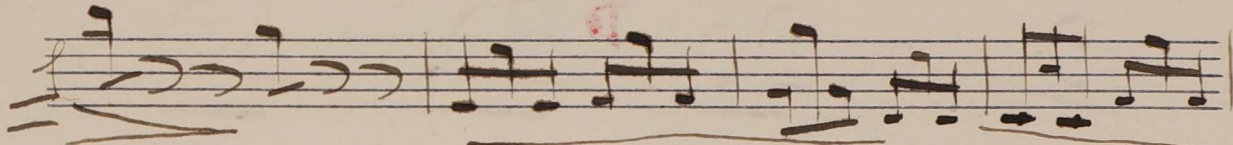
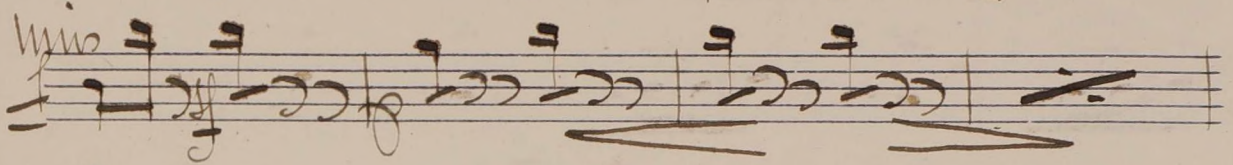
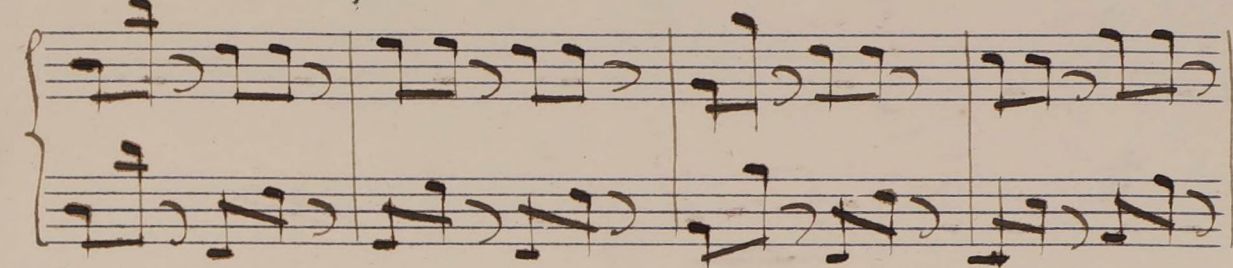
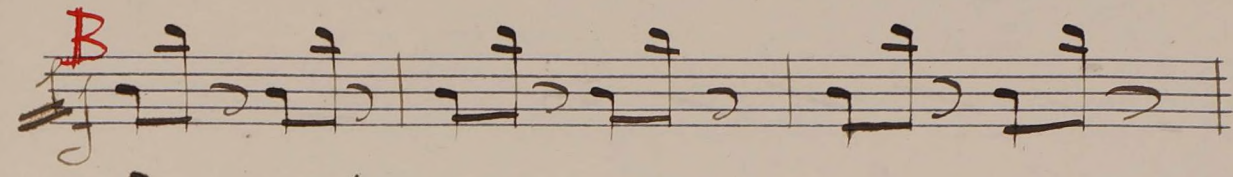
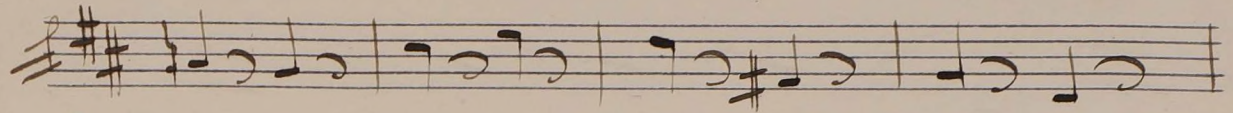
*al tempo*



No. 3. Serenade.

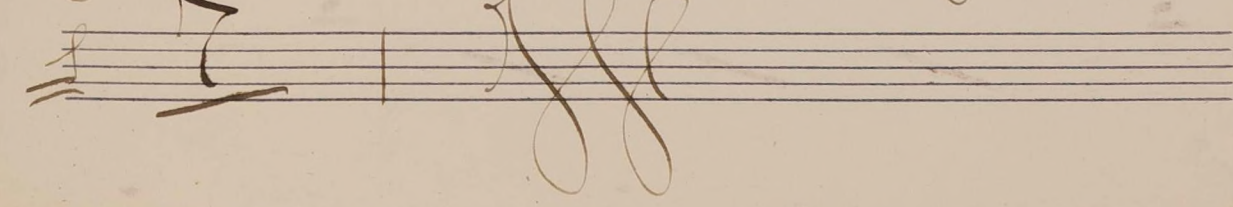
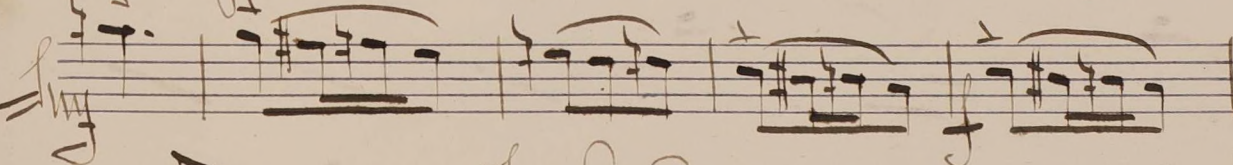
Handwritten musical score for a piece titled "No. 3. Serenade." The score is written on ten staves. The first staff is a treble clef staff with the tempo marking "Allegretto" and a key signature of one sharp (F#). The time signature is 6/8. The first measure of the first staff contains the tempo marking "Allegretto" and the key signature. The second measure of the first staff contains the tempo marking "pizz." (pizzicato). The second staff is a bass clef staff with the tempo marking "pizz." and the tempo marking "paura" (paura). The third staff is a treble clef staff. The fourth staff is a bass clef staff. The fifth staff is a treble clef staff with the tempo marking "dim" (diminuendo). The sixth staff is a treble clef staff. The seventh staff is a bass clef staff with the tempo marking "A" (Allegretto) and the tempo marking "p" (piano). The eighth staff is a treble clef staff. The ninth staff is a bass clef staff. The tenth staff is a treble clef staff with the tempo marking "Mis" (Missa).





No. 2. Final.

allegro vivace |  $\text{G}:\#\#\text{G}$   $\frac{3}{8}$  36 <sup>A</sup>





*B* *Piz<sup>o</sup>*  
*mf*

*cres*

*arco* *A*

*B*

*Piz<sup>o</sup>*  
*cres*

*mp*

*mf*



arco cello

cres H Pizz

dim

# Nocturno.

Andantino

(Sordina)

K tring

L

riten rall cant

Allegretto

m sin sordina

n.

tempo primo



**0** *Piso*  
*mf*

*cresce*

*Arco* **P**

*mf*

*cresce*

**28** **R** **8**

**28** **R** **8**

*cello* **9** *cres*

*mf*

*Piso* *arco*

*arco*

