

Trompeta 2^a

Suite.

202

de



Lully.

No. 1. Introduccion - Facet.

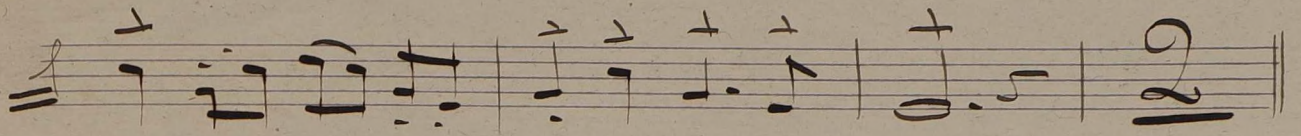
No. 2. y 3. Facet.

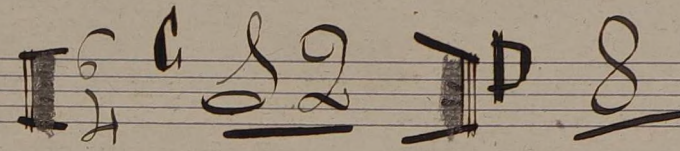
No. 4. Preludio y Marcha.

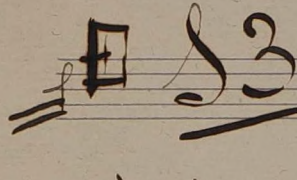
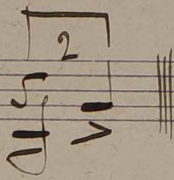
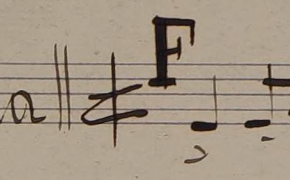
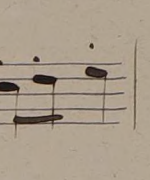
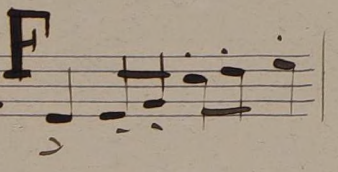
Grave. (En Do.)

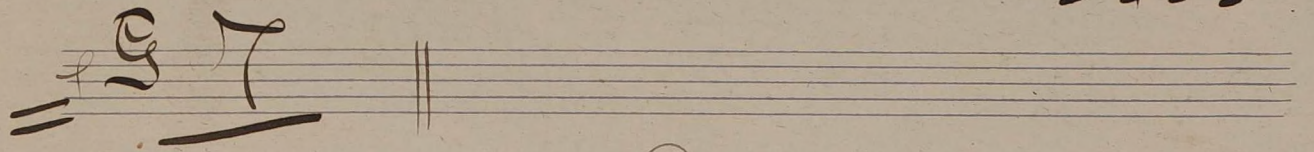
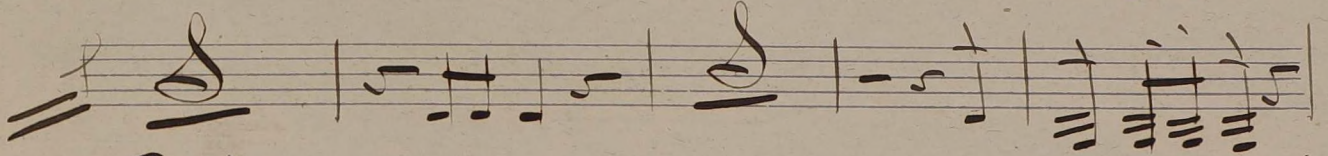
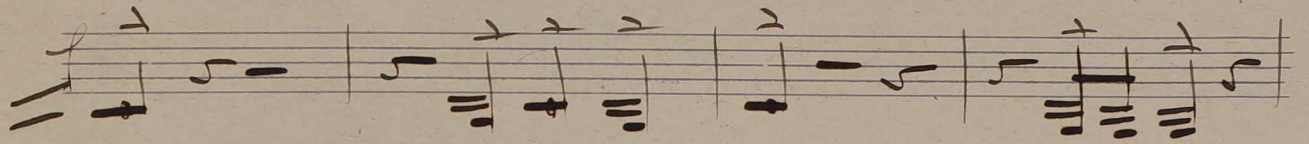
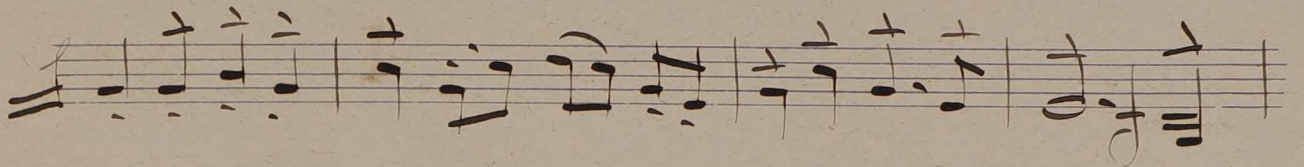
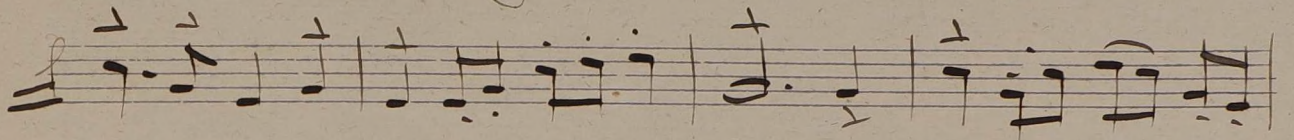
$\text{♩} = \frac{3}{2}$ $\text{♩} = 5$ | ♩ | ataca Marcha

Allo. Pomposo



Les vents 

    **Marcha** 



Handwritten musical notation on eight staves. The notation includes various note values, rests, and clefs. The first staff begins with a treble clef and a key signature of one sharp (F#). The notation is dense and appears to be a single melodic line. The eighth staff ends with a double bar line and a fermata-like flourish.

Handwritten text:
Cipri
#

Four empty musical staves, each consisting of five horizontal lines, arranged vertically at the bottom of the page.