

Corno Inglese //

El Gallo de Oro,

Korsakow //

Handwritten musical notation on a single staff, featuring treble clef, key signature of one sharp (F#), and a tempo marking of *All^o*. The notation includes various rhythmic values and dynamic markings such as *ff*.

Handwritten musical notation on a single staff, continuing the piece with treble clef and key signature of one sharp.

B. Cortege de Noce

227

Handwritten musical notation on a single staff, starting with the tempo marking *All^o ala marcia*. The key signature changes to two sharps (F# and C#). The notation includes dynamic markings like *ff* and rests.

Handwritten musical notation on a single staff, marked *Solo* and *ff*. It features a melodic line with eighth and sixteenth notes.

Handwritten musical notation on a single staff, continuing the melodic line with various rhythmic patterns and a *mes* marking.

Handwritten musical notation on a single staff, starting with a circled measure number 228. It includes dynamic markings like *ff* and rests.

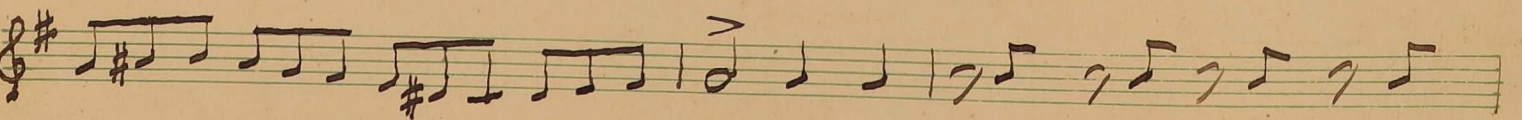
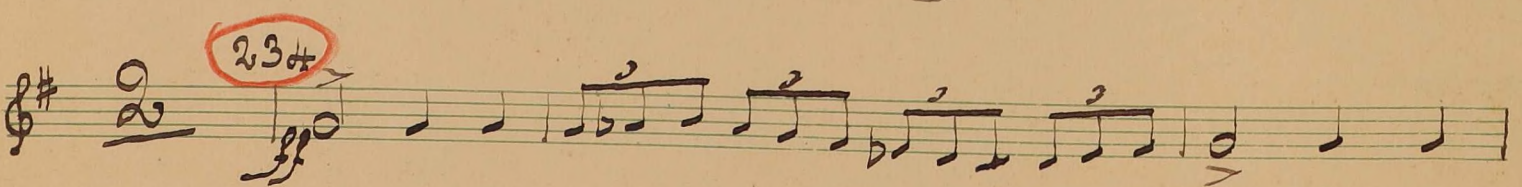
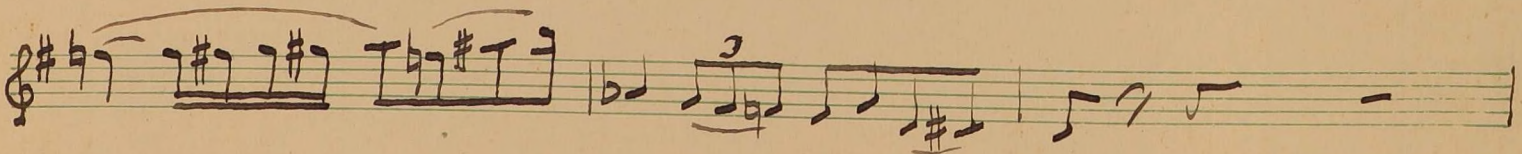
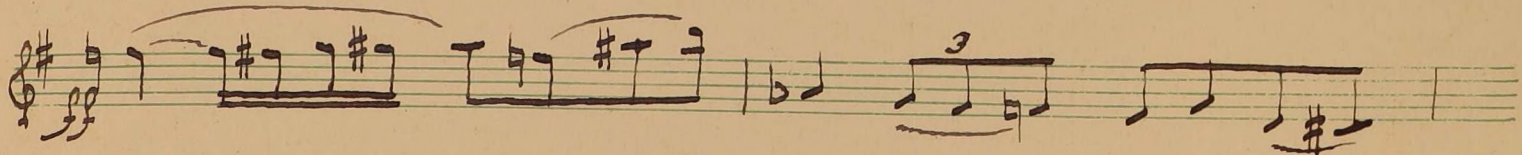
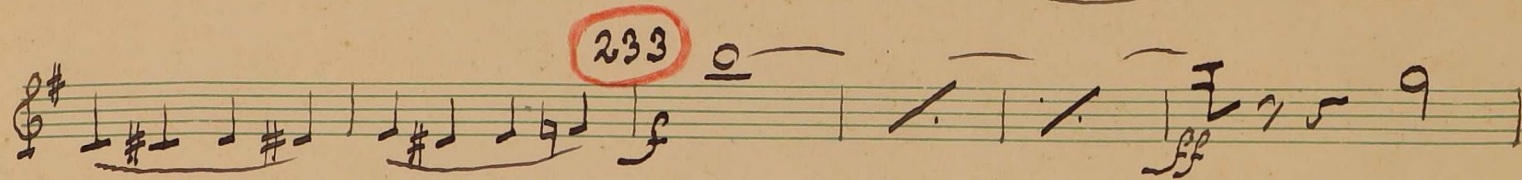
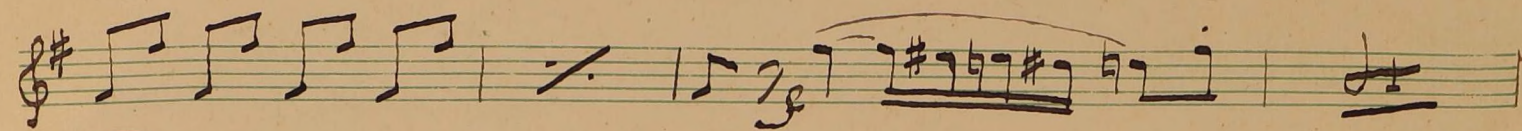
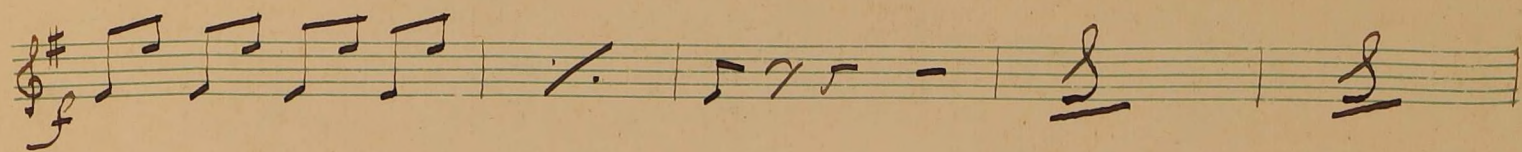
Handwritten musical notation on a single staff, starting with a circled measure number 229. It includes dynamic markings like *ff* and rests.

Handwritten musical notation on a single staff, continuing the piece with rests and melodic fragments.

230

231

Handwritten musical notation on a single staff, starting with a circled measure number 230. It includes dynamic markings like *ff* and rests.



235

