

1

Cello.

185

La Dolores -

- Jota -

Burton -

(4)

LA DOLORES

VIOLONCELLO

piu

Pro diوتا

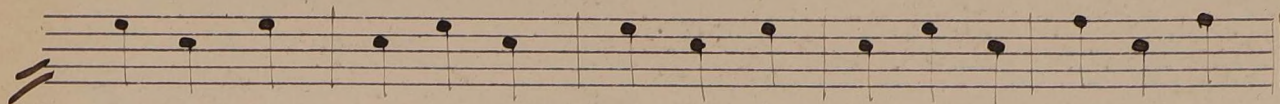
1a variation

(P)

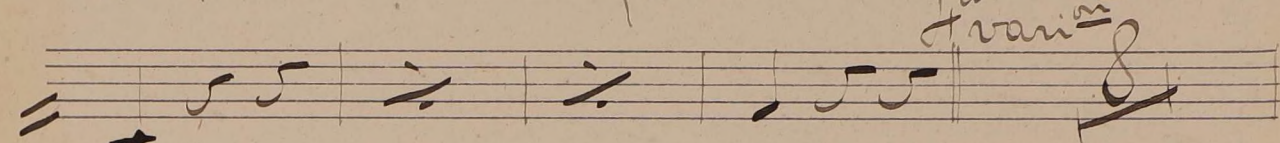
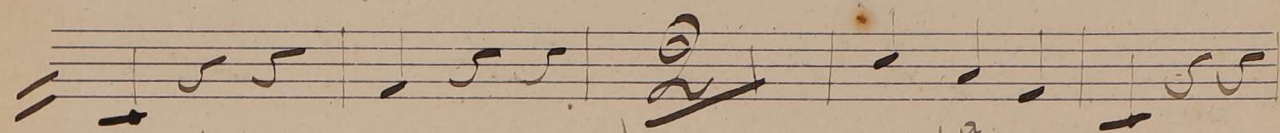
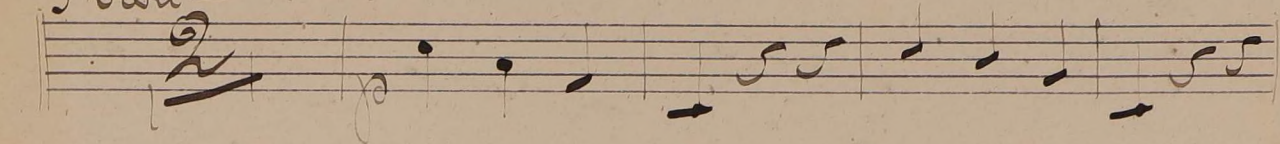
2a variation

cres

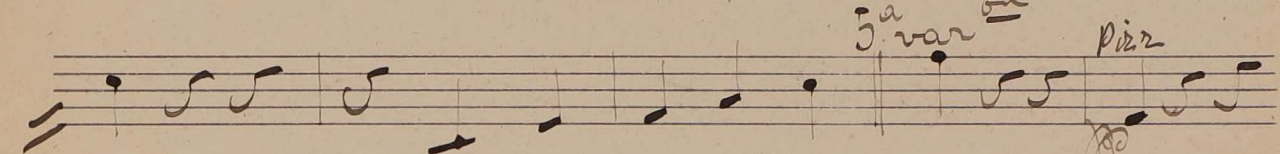
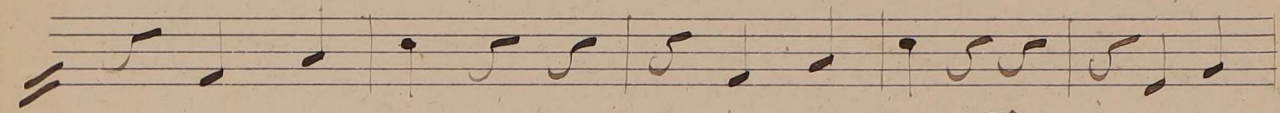
cres



3^a var^{on}

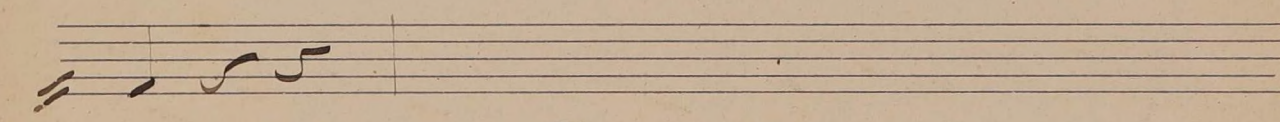
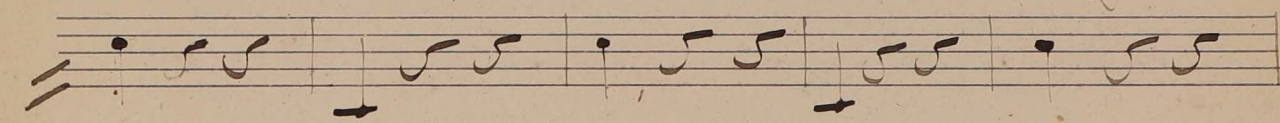


1^a var^{on}

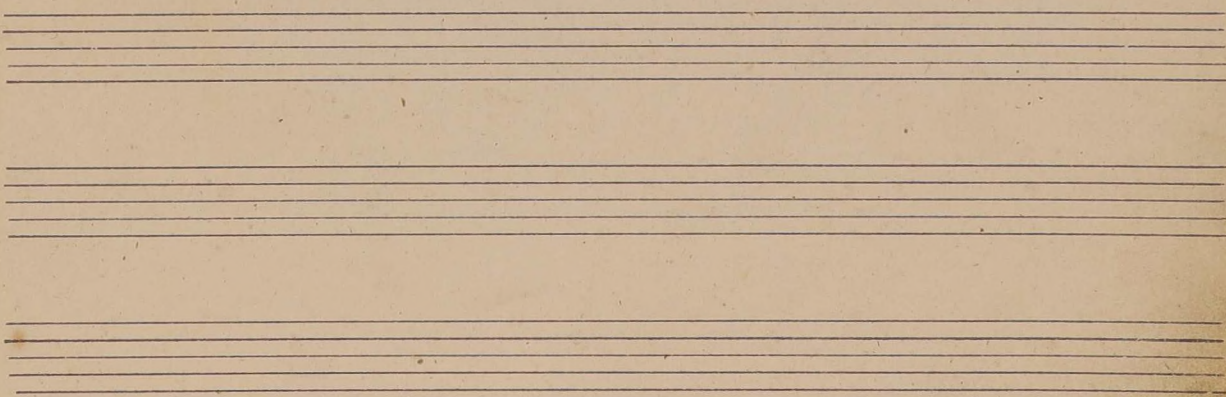


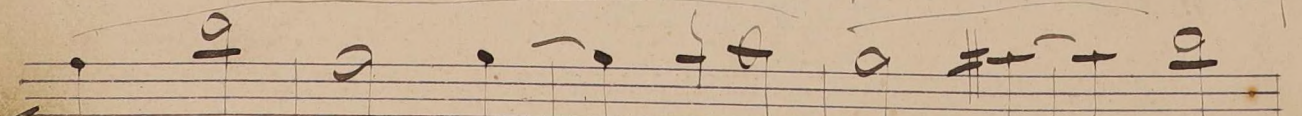
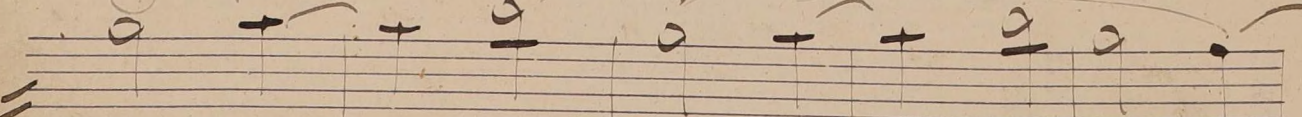
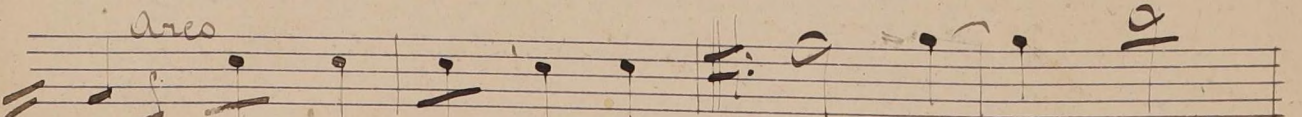
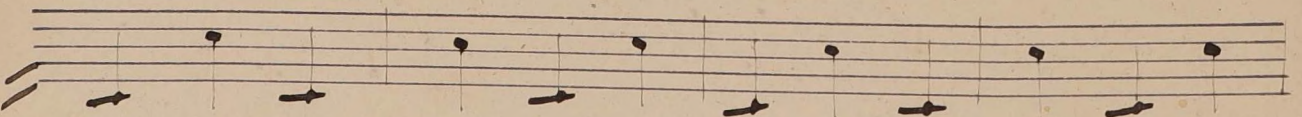
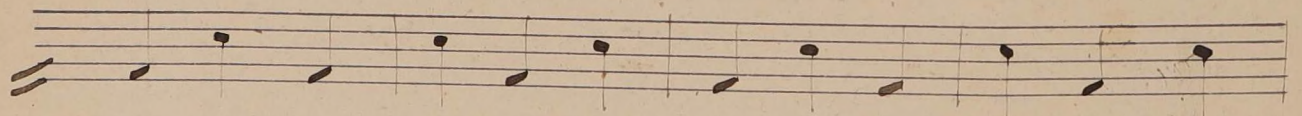
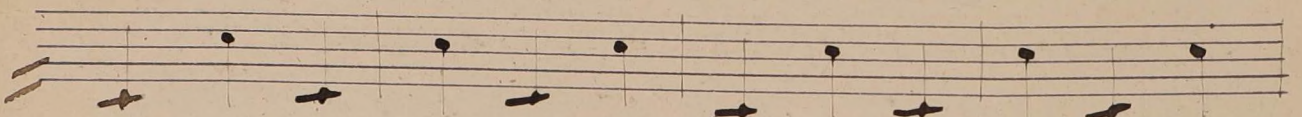
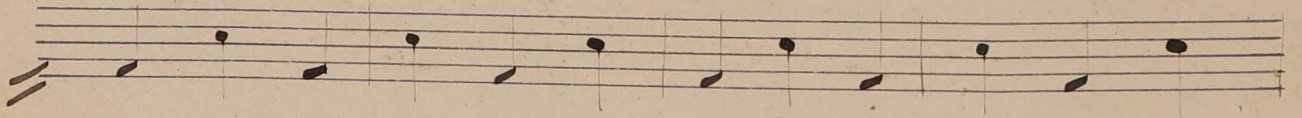
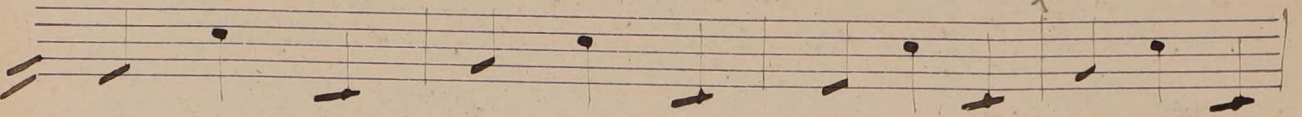
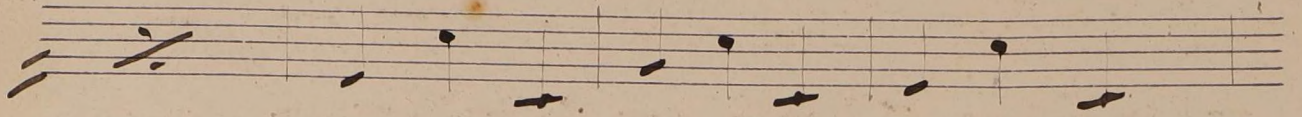
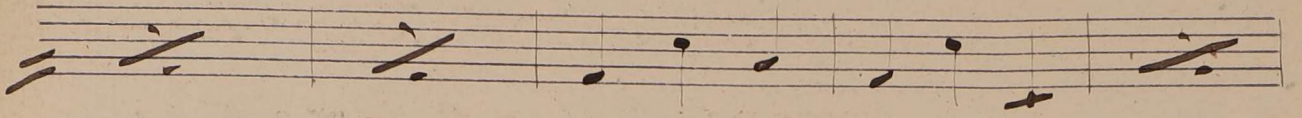
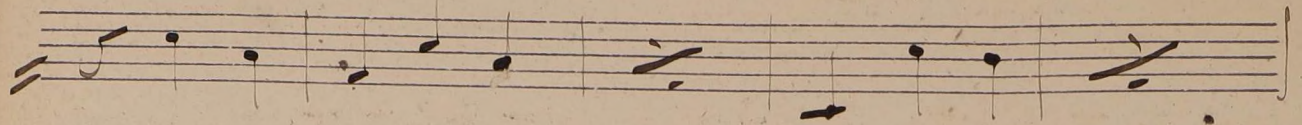
5^a var^{on}

pizz



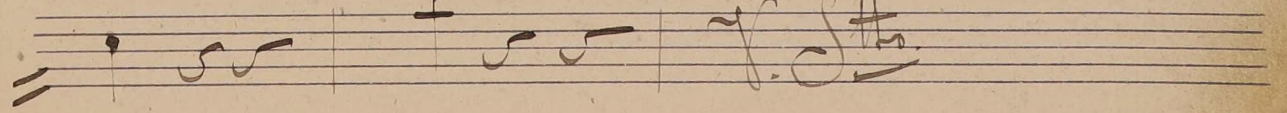
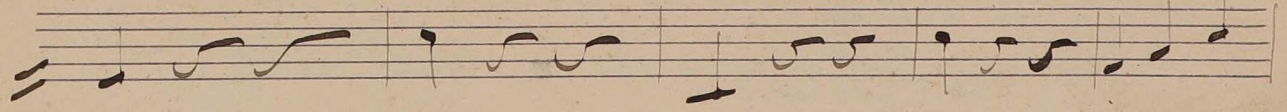
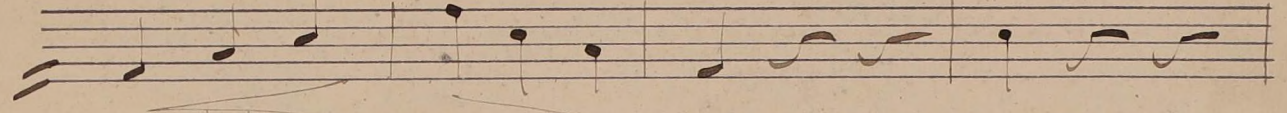
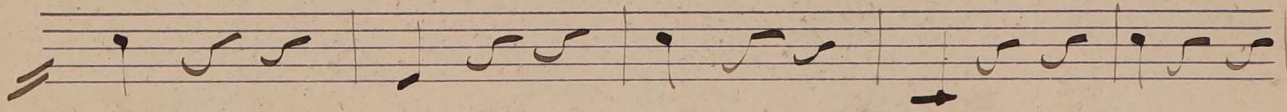
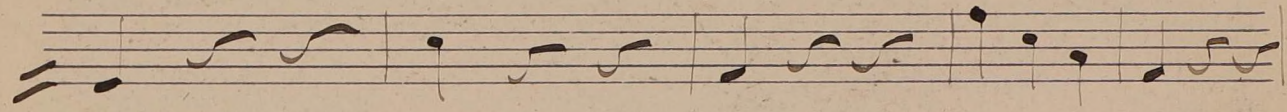
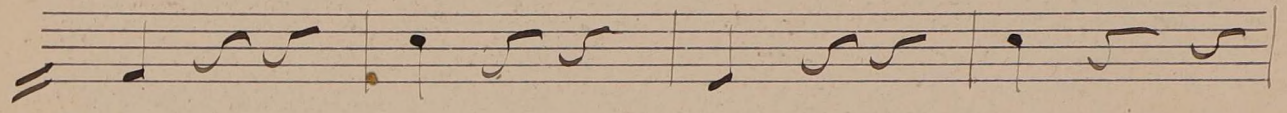
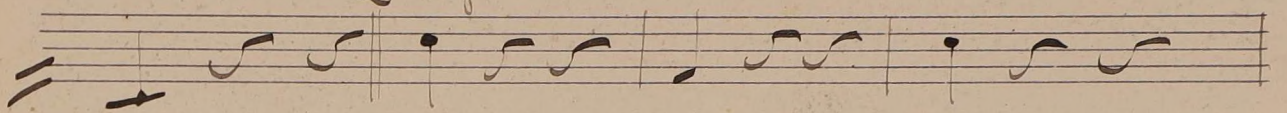
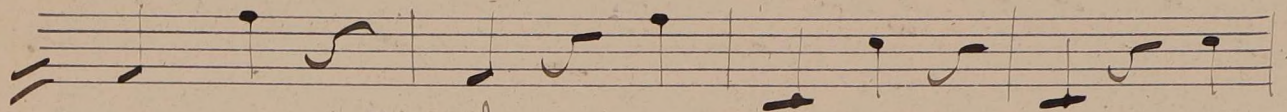
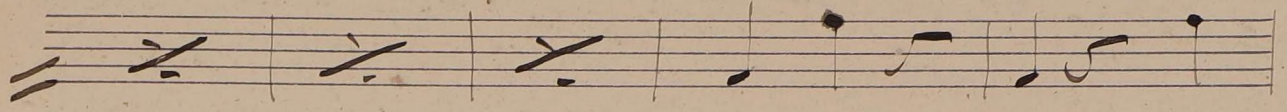
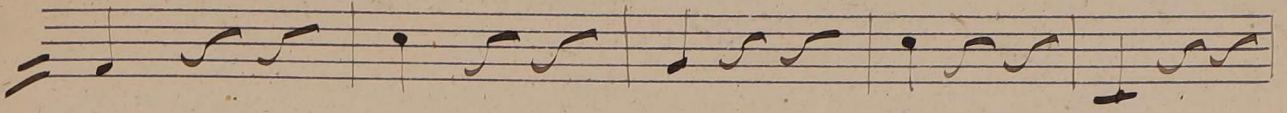
Handwritten musical notation on a single staff, including a treble clef, a series of notes, and a sharp sign (#).





Handwritten musical score on 12 staves. The notation includes various notes, rests, and clefs. Annotations include:

- 6^a variation* (written above the second staff)
- arco* (written above the sixth staff)
- pizz* (written above the tenth staff)



arco con la vara 3

arco

arco

arco

