

Tromba 2a

- 154

Preludio  
de la Cantata n.º 29.

de  
Bach //





(En Do)

Alle-moderato

Handwritten musical notation on a grand staff. The first system includes a treble clef, a key signature of three sharps (F#, C#, G#), and a 3/4 time signature. The music begins with a treble clef and a *pp* dynamic marking. The second system includes a bass clef and a *pp* dynamic marking. There are some scribbles in the second system.

Handwritten musical notation on a grand staff. The first system includes a treble clef and a *mf* dynamic marking. A red number '2' is written above the first measure.

Handwritten musical notation on a grand staff. The first system includes a bass clef. Red numbers '3', '4', '5', and '6' are written above the first four measures.

Handwritten musical notation on a grand staff. The first system includes a treble clef. Red numbers '7', '8', and '9' are written above the first three measures.

Handwritten musical notation on a grand staff. The first system includes a treble clef and a *mf* dynamic marking. Red numbers '10' and '11' are written above the first two measures.

Handwritten musical notation on a grand staff. The first system includes a treble clef and a *mf* dynamic marking. Red number '12' is written above the second measure.

Handwritten musical notation on a grand staff. The first system includes a bass clef. Red numbers '13' and '14' are written above the second and third measures.

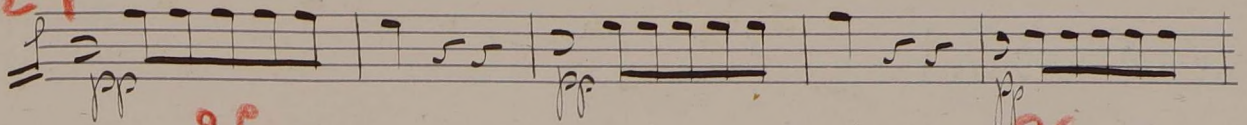
Handwritten musical notation on a grand staff. The first system includes a treble clef. Red numbers '15' and '16' are written above the third and fourth measures.

Handwritten musical notation on a grand staff. The first system includes a treble clef. Red numbers '17' and '18' are written above the third and fourth measures.

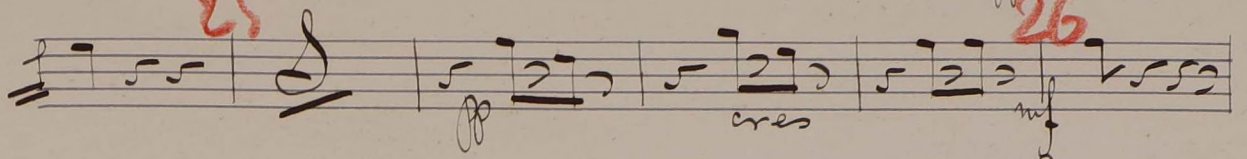
Handwritten musical notation on a grand staff. The first system includes a treble clef. Red numbers '19', '20', '21', '22', and '23' are written above the first five measures.



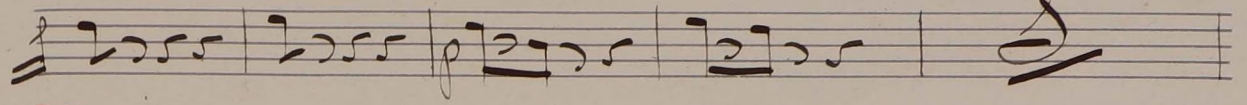
24



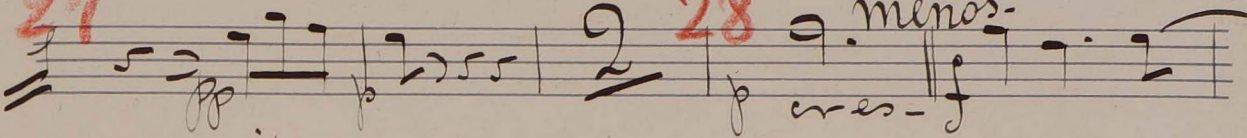
25



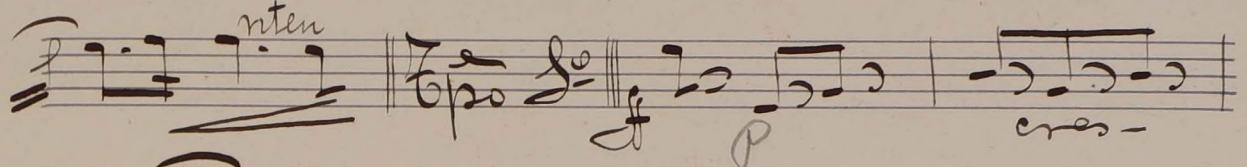
26



27



28



a. menos-

riten

