

ENGLAND AND WALES.

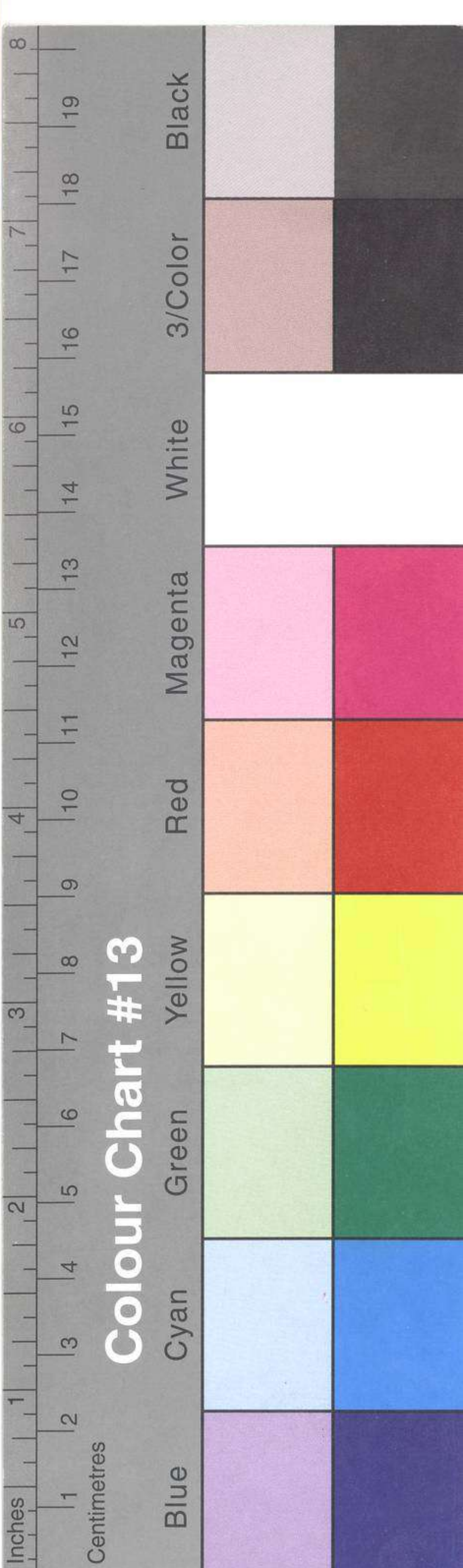
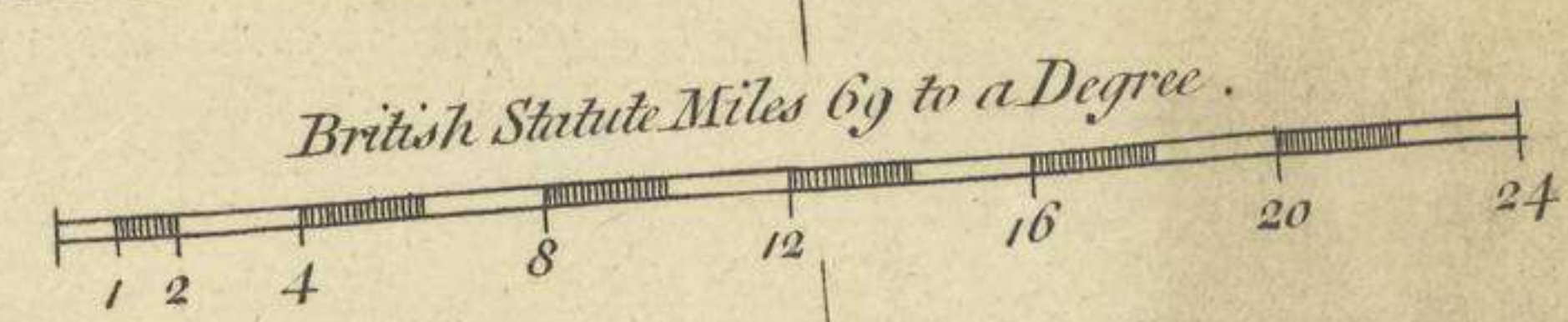
*Laid down from all the
SURVEYS OF PARTICULAR COUNTIES
hitherto published.*

Distinctly shewing the CITIES, MARKET TOWNS, & VILLAGES.

*The ROADS
with the measured Distances thereon,
according to M^r Ogilby's Survey.*

ALSO
*an accurate delineation of the
SEA COASTS and RIVERS.*
Laid down by Delarochette, & Engraved by Tho^s Kitchin

LONDON.
Printed for Rob^t Wilkinson Number 58, in Cornhill,
Carington Bowles next the Chapter House in S^t Pauls Church Yard,
and Rob^t Sayer in Fleet Street.





CUMBERLAND, NORTHUMBERLAND, WESTMORELAND, DURHAM, NORTH RIDING OF YORKSHIRE.



P A R T O F I R E L A N D

S C O T L A N D

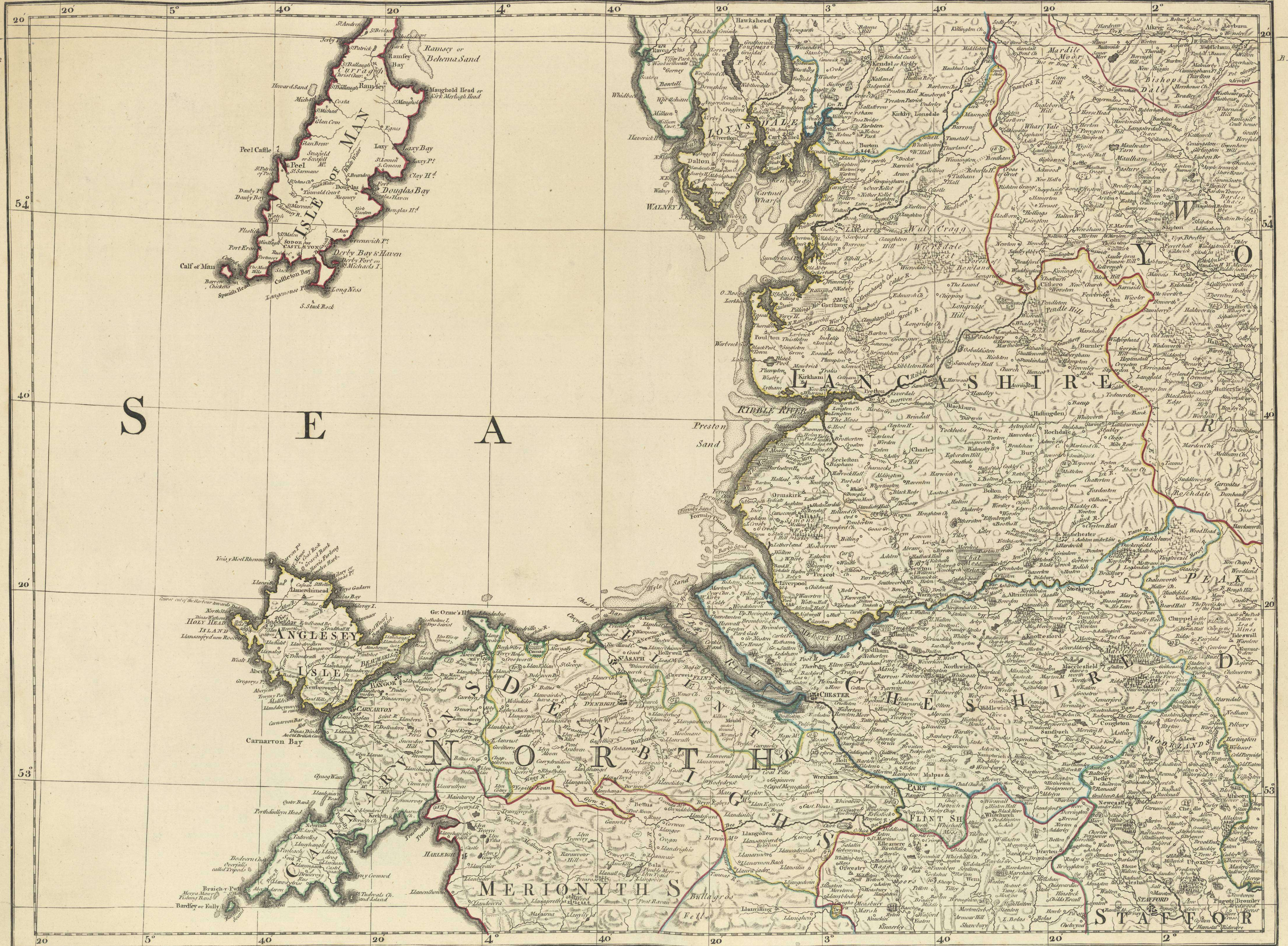


The Distances in this Map, are laid down in Mr Ogilby's Method, from one common Centre, the Royal Exchange in London. But the Mile Staves placed on the several Roads, take their Distances from different Towns and some of them far separated.

Price £1. in Sheets L. i. to Colour'd Pasted on Canvas with Roll & Ledge.

THE BRIT

ISLES OF MAN AND ANGLESEY. CARNARVON, MERIONYTH, DENBIGH, FLINT, CHESTER, LANCASTER



S
E
A

LANCASHIRE

ANGLESEY

CARNARVON MERIONYTH DENBIGH

FLINT CHESTER

LANCASTER



I S H
S E A



C. 2

C. 2

CARDIGAN

BAY

MONTGOMERY

SHERIFFS

STAFFOR

RADNOR

HEREFORDS

BRECKNOCKS

GLOCESTER

GLAMORGAN

MONMOUTH

BRISTOL CHANNEL

Lundy I

Steepleholme

WIT



OR

A S T E R N

C E A N

S^T GEORGE'S CHANNEL

TIPERARY

KILKENNY

WEXFORD

WATERFORD

Middle Ground

South Ground

New Ground

S^t Davids H^o
The Bishop
and his
Clerks
Ramsey I^{le}
Bishop I^{le}

Mascos Rocks

Grasholm

Stemad

Halls

Barrell

Gateham I^{le}

Small

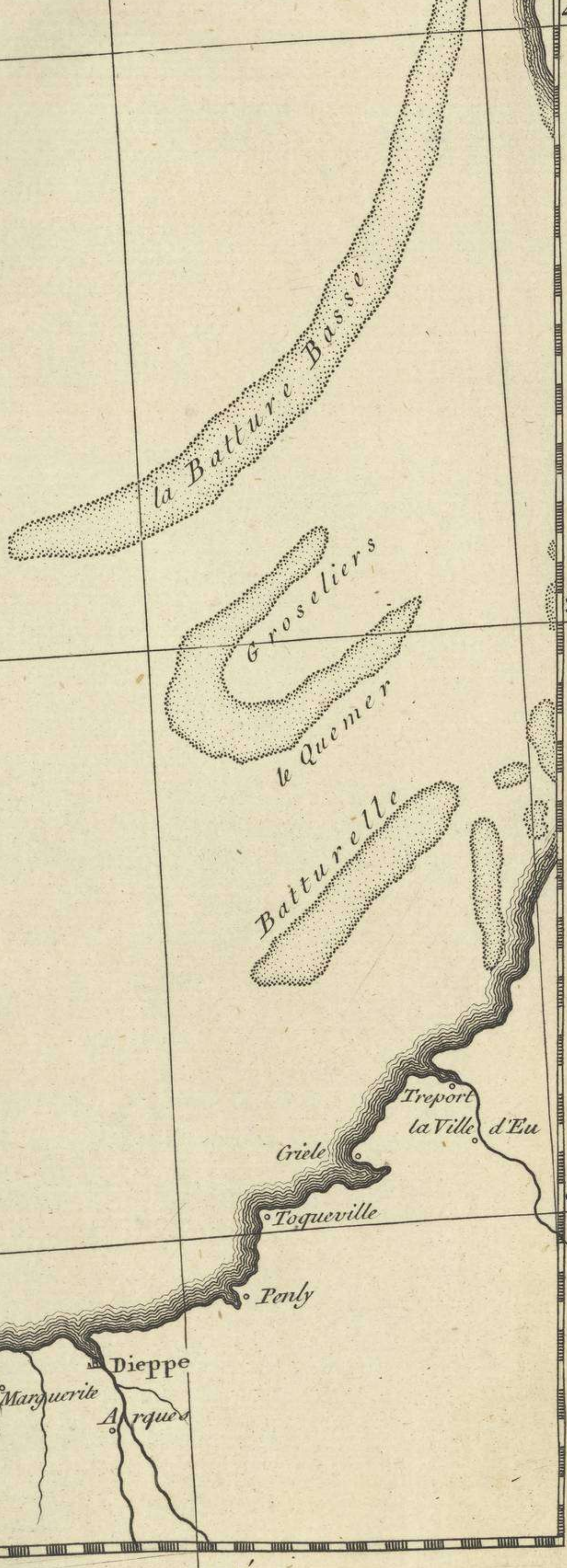
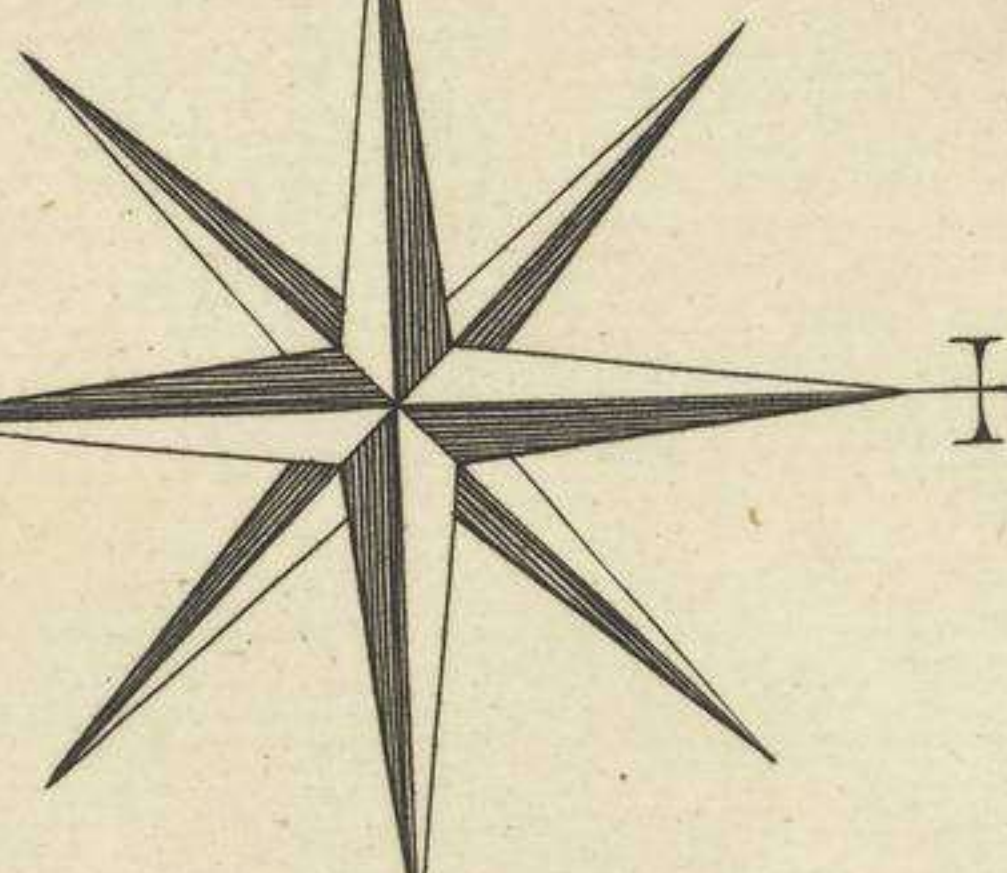
Shakam I^{le}





CHANNEL

STRAITS OF DOVER



D.3

51

40

20

50

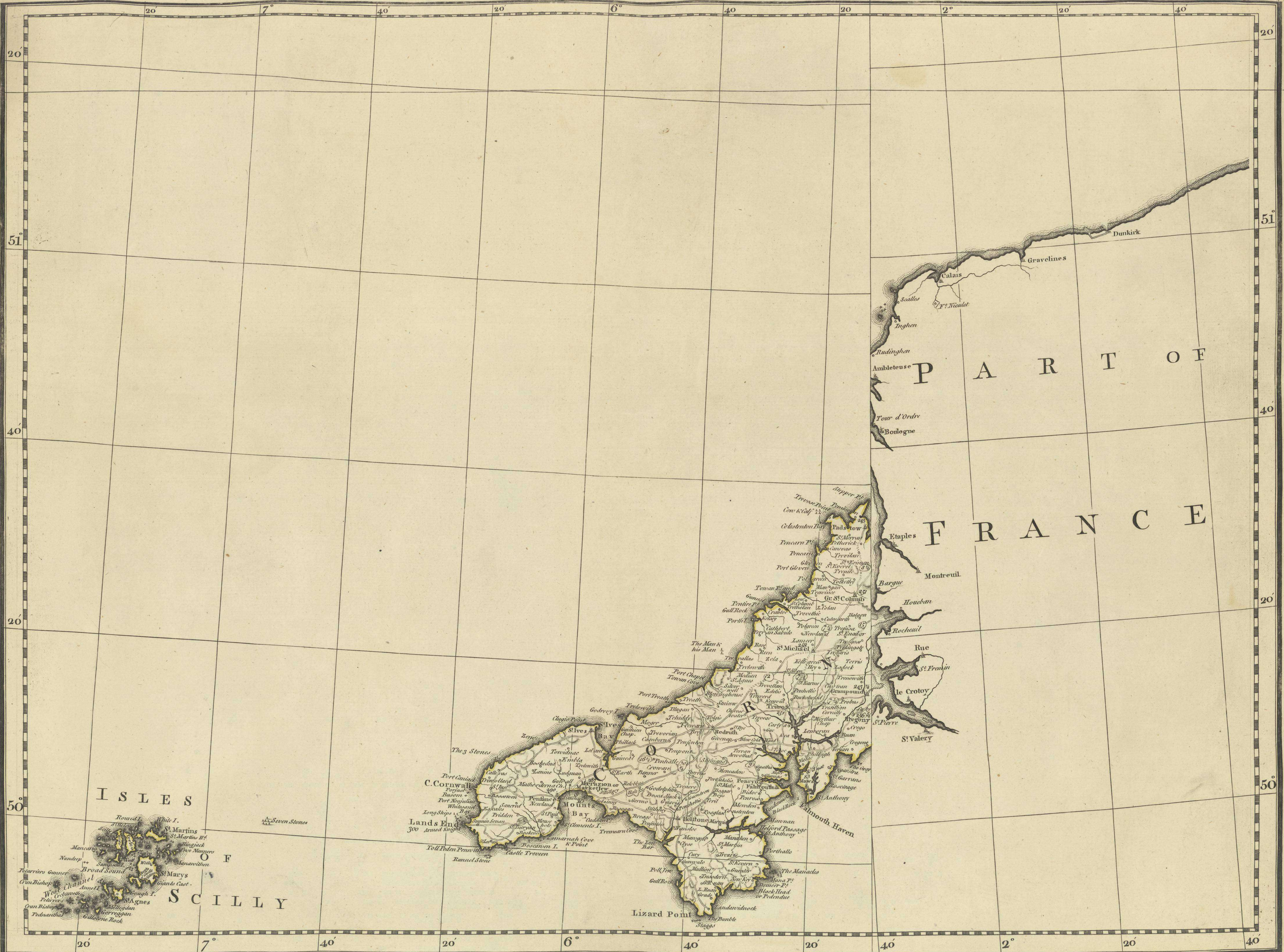


THE BRISTOL CHANNEL



THE ENGLISH

I S L E S O F S C I L L Y , C O R N D . I D . 4 P A R T O F F R A N C E



I S L E S
O F
S C I L L Y

P A R T O F

F R A N C E

Lizard Point