

TROMBON

3^{ro}

Orquesta Sinfónica de Madrid.

Número 213

DAPHNIS ET CHLOE

M RAVEL



TOUTE REPRODUCTION
PAR L'AUTOGRAPHIE OU LA
COPIE SERA RIGOREUSE-
MENT POURSUIVIE

3^{me} TROMBONE

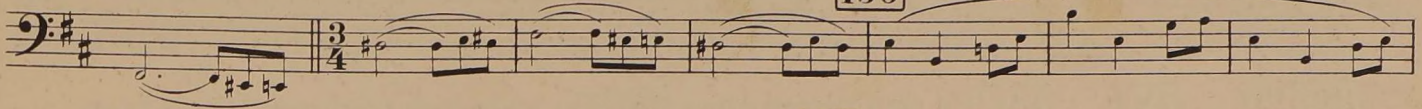
Début des *Fragments Symphoniques* (2^e Série)

DAPHNIS ET CHLOE

155



156



157 Trb.

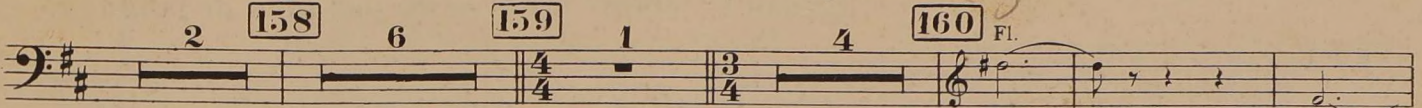


mf

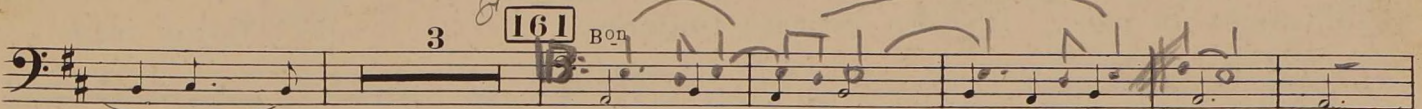
158

159

160 Fl.



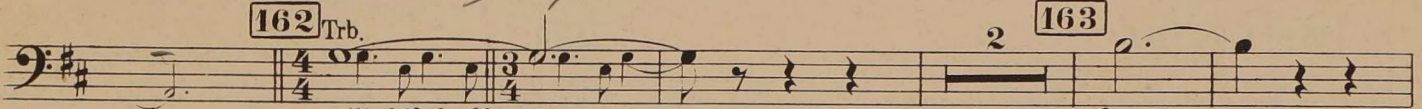
161 Bon.



SORD

162 Trb.

163



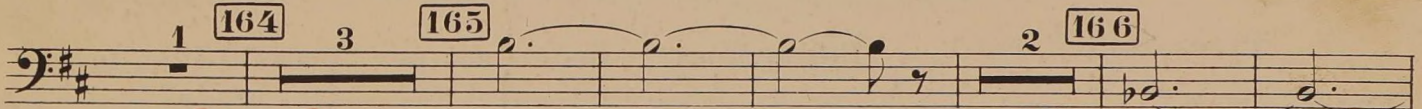
Pa déf. de Chœurs

f

164

165

166



(a 6) *A mf 3*

Sourdine *pp*

167

Otez la Sourd.

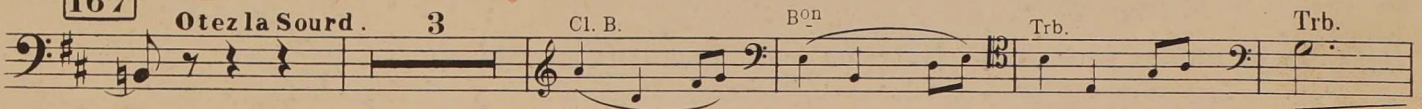
3

Cl. B.

Bon.

Trb.

Trb.

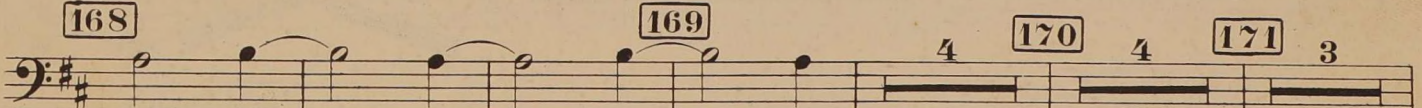


168

169

170

171



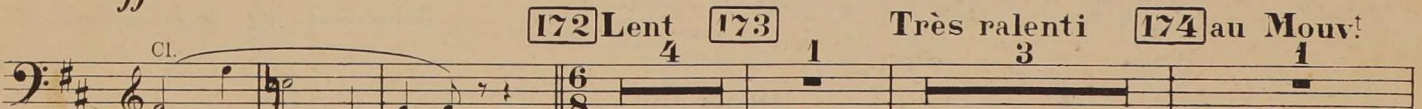
ff

172 Lent 4

173 1

Très ralenti 3

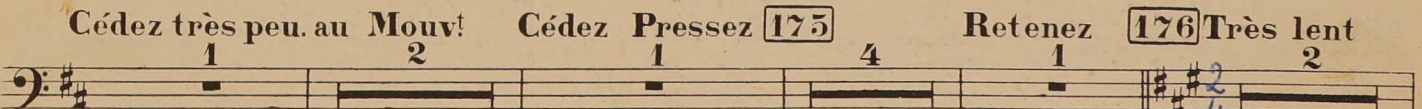
174 au Mouv! 1



Cédez très peu. au Mouv! 1 2

Cédez Pressez 175 4

Retenez 176 Très lent 2



Fl.



4 **177** 8 Retenu légèrement. Rall. **178** au Mouv! Retenu **179** au Mouv! Fl. *tr.*

Pressez au Mouv! Pressez

180 Vif **181** **182** Un peu plus animé. **183** En animant toujours davantage. Fl.

184 au I^{er} Mouv! vif avec un peu plus de langueur. Fl.

185 Animez un peu. **186** En animant toujours **187** Moins animé.

188 Très lent Fl.

189

Cédez très peu.

Pressez Plus lent Trb.

190 au Mouv!

Cédez très peu. Pressez Plus lent

pp < *mf* >

p < *f* >

191 Même mov! plus lent Retenez peu à peu. **192** au Mouv!

193 Lent Trb.

194 Animé 3

f

195 Lent Trb.

animé

196 2

p

197

vous

6
8

3^{me} TROMBONE

Trb. 198 *f* *ff* 199 200 3 3 4

201 4 Fl. 3/4 5/4

202 Trb. *p* < *f* > *p* < *f* >

203 3 *ff* *ff*

204 1 205 5 2

Fl. 206 Trb. *mf*

f *ff* *mp* *f* SIM SORD SORD

207 5/4 1 208 *f* *ff* *p* *f*

209 1 *p* < *f* > *mf* < *ff* >

ff

210 6 211 Cl. 3

2 **212** 5 **213** Trp. Fl.

214 2

215 Trb. *mf* 3 3

Fl. **216** Trb. *pp* < *ff* *p*

217 *ff* *ff* *p* < *f*

ff *ff*

218 7 **219** 1 2 3

Fl. 4 5 6

220 Trb. *ff*

221 *pp* *ff*

2 3 4 5 6

218

Handwritten musical notation for measure 218. The staff is in bass clef with a key signature of two sharps (F# and C#) and a 3/4 time signature. The first note is a quarter note G2 with a dynamic marking 'p' and an accent. The second measure contains a whole rest. The third measure contains a quarter note G2 with a fingering '3'. The fourth measure contains a quarter note G2 with a fingering '4'. The fifth measure contains a quarter note G2 with a fingering '5'. The sixth measure contains a quarter note G2 with a fingering '6'. Slurs are placed over the first and second notes, and over the last four notes.

Handwritten musical notation for measure 219. The staff is in bass clef with a key signature of two sharps (F# and C#). The first measure contains a quarter note G2 with a slur. The second measure contains a quarter note G2 with a slur and a boxed measure number '219'. The third measure contains a quarter note G2 with a slur and a sharp sign. The fourth measure contains a quarter note G2 with a slur and a sharp sign. The fifth measure contains a quarter note G2 with a slur and a sharp sign. The sixth measure contains a quarter note G2 with a slur and a sharp sign.

Handwritten musical notation for measure 220. The staff is in bass clef with a key signature of two sharps (F# and C#). The first measure contains a quarter note G2 with a slur and a sharp sign. The second measure contains a quarter note G2 with a slur and a sharp sign. The third measure contains a quarter note G2 with a slur and a sharp sign. The fourth measure contains a quarter note G2 with a slur and a sharp sign. The fifth measure contains a quarter note G2 with a slur and a sharp sign. The sixth measure contains a quarter note G2 with a slur and a sharp sign.

Handwritten musical notation for measure 220 (continued). The staff is in bass clef with a key signature of two sharps (F# and C#). The first measure contains a quarter note G2 with a slur and a sharp sign. The second measure contains a quarter note G2 with a slur and a sharp sign. The third measure contains a quarter note G2 with a slur and a sharp sign. The fourth measure contains a quarter note G2 with a slur and a sharp sign. The fifth measure contains a quarter note G2 with a slur and a sharp sign. The sixth measure contains a quarter note G2 with a slur and a sharp sign. A boxed measure number '220' is present at the end of the staff.