

Fremppa 2^a

E174

El Puerto.

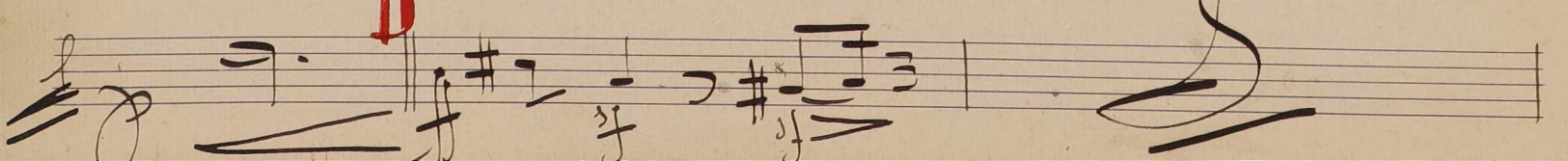
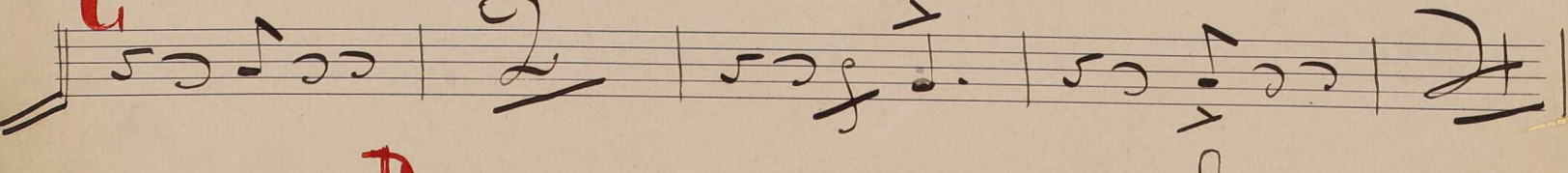
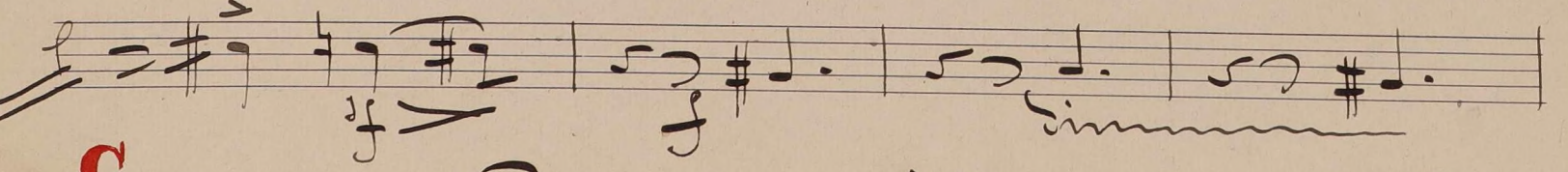
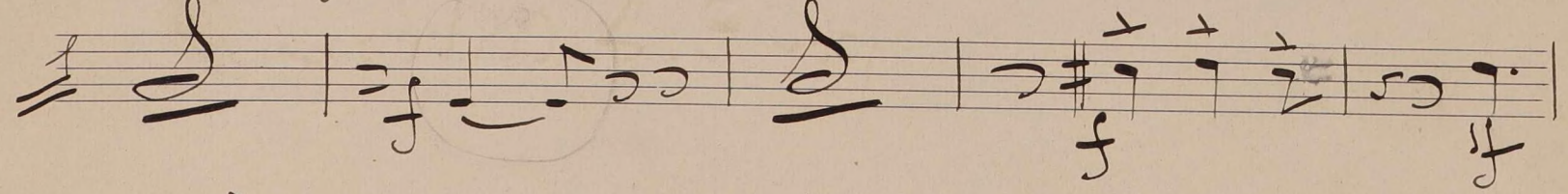
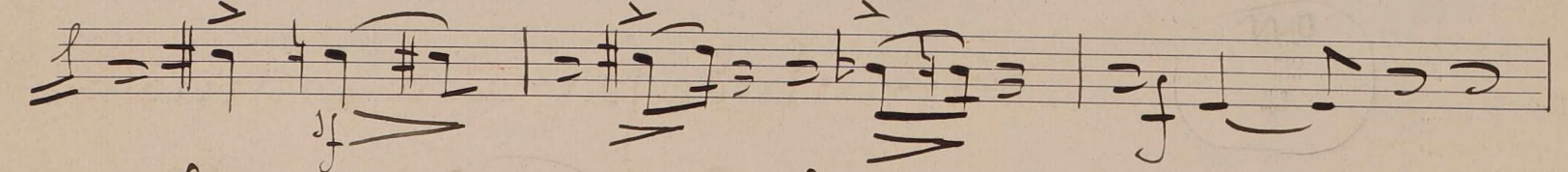
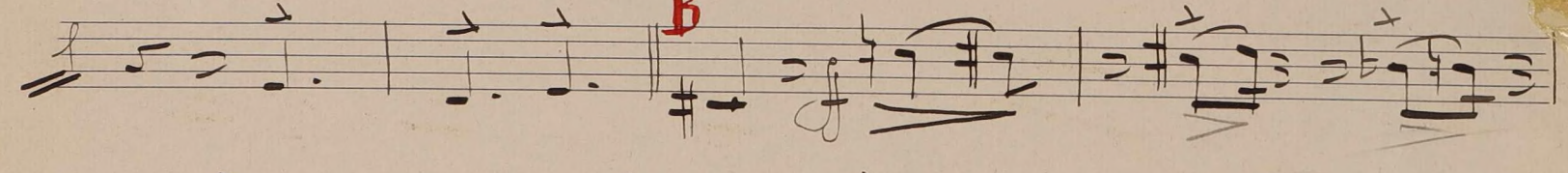
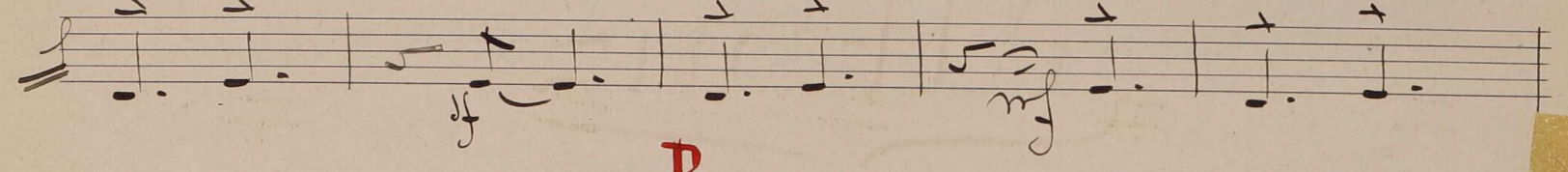
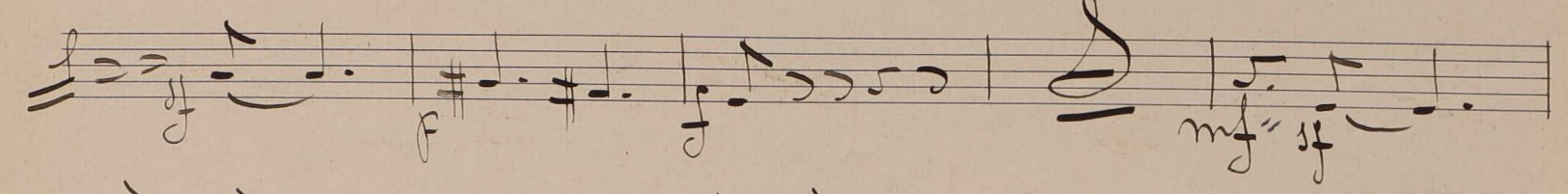
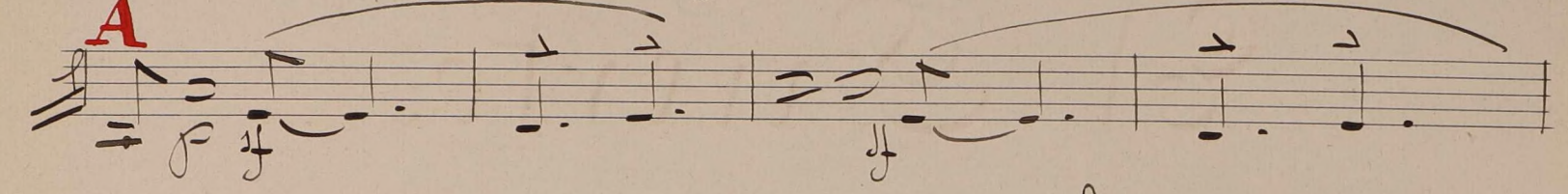
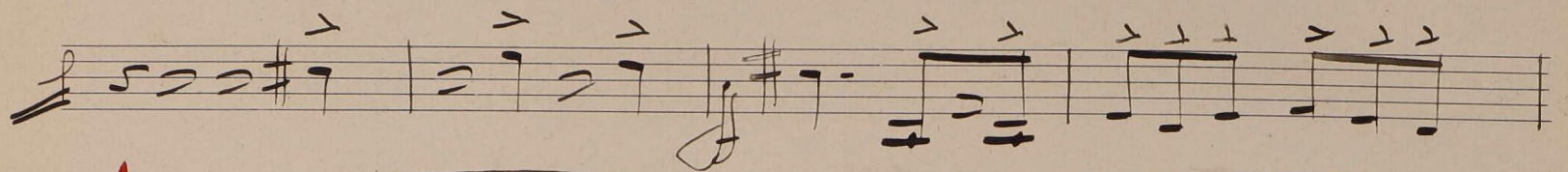
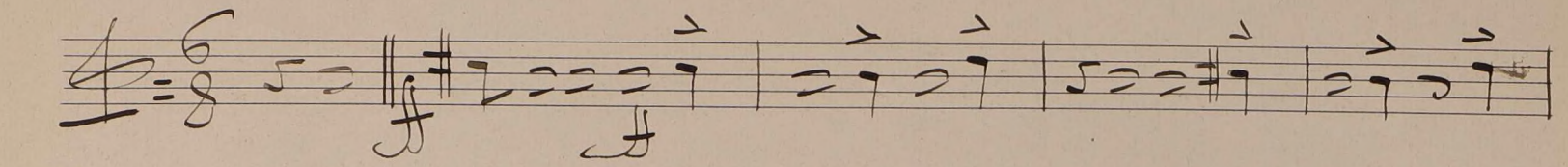
por.

Albeniz

arreglado para la Orquesta
por E. D. Arbes =

All^o Comodo =

(Con Tra)



cuivres le son

Handwritten musical notation on a single staff, featuring various rhythmic values and dynamic markings like 'f' and accents.

Handwritten musical notation on a single staff, continuing the piece with rhythmic patterns and dynamic markings.

Handwritten musical notation on a single staff, showing a key signature change to one sharp (F#) and various rhythmic values.

Handwritten musical notation on a single staff, starting with a red 'E' marking and featuring a fermata over a note.

Handwritten musical notation on a single staff, including a 3/2 time signature and various rhythmic values.

Handwritten musical notation on a single staff, consisting of a series of dotted notes.

Handwritten musical notation on a single staff, starting with a red 'F' marking and featuring a fermata.

Handwritten musical notation on a single staff, with red markings '3e' and '(3e)' above the notes.

Handwritten musical notation on a single staff, including a 3/2 time signature and a double bar line.

A large, decorative flourish or signature in the bottom right corner of the page.

Handwritten musical notation on a five-line staff. The music begins with a *pp* dynamic marking and a *mf* dynamic marking. A red letter **G** is written above the staff. The notes are mostly quarter and eighth notes.

Handwritten musical notation on a five-line staff. The music continues with quarter notes. A *cresc.* marking is written below the staff, followed by a dashed line and the word *cen*.

Handwritten musical notation on a five-line staff. A red letter **H** is written above the staff, followed by the text *cuivres le son*. The music features quarter notes and a sharp sign (#) on the staff.

Handwritten musical notation on a five-line staff. The music consists of quarter notes with a *ff* dynamic marking below the staff.

Handwritten musical notation on a five-line staff. A red letter **I** is written above the staff. The music includes quarter notes and a blue scribble. A *ff* dynamic marking is present.

Handwritten musical notation on a five-line staff. The music features quarter notes and a sharp sign (#) on the staff.

Handwritten musical notation on a five-line staff. The music includes quarter notes and a sharp sign (#) on the staff. The text *naturale* and *cuivres* is written to the right of the staff.

Handwritten musical notation on a five-line staff. The music features quarter notes and a sharp sign (#) on the staff. The text *cresc molto* is written below the staff. A red letter **J** is written above the staff.

Handwritten musical notation on a five-line staff. The music includes quarter notes and a sharp sign (#) on the staff. The text *dim* is written to the right of the staff.

Handwritten musical notation on a five-line staff. The music features quarter notes and a sharp sign (#) on the staff.

Handwritten musical notation on a five-line staff. A red letter **K** is written above the staff, followed by the text *cuivres*. The music includes quarter notes and a sharp sign (#) on the staff. A *ff* dynamic marking is present.

Handwritten musical notation on a five-line staff. The music features quarter notes and a sharp sign (#) on the staff. A *ff* dynamic marking is present.

Sim

L

riten perdendosi **3** **|| meno tempo**

M. *ritar sempre poco a poco*
pp cordina

Sim e perdendosi

M. **|| Quasi Andte** *pp* **(Gordina)**

ritar-

0 **Lento**

26 *naturale* *pp* *27*

4. m.