

x-rite

colorchecker CLASSIC



FA-C29-27

WOMEN'S FESTIVAL DRESS CANDELARIO, SALAMANCA

FROM PHOTOGRAPHS
IN THE COLLECTION OF
THE HISPANIC SOCIETY
OF AMERICA

WITH COMPARATIVE MATERIAL



P(12246)

The festival dress of the women of Candelario is made of rich materials: silk, broadcloth, and velvet. Hand embroidery adorns the pocket, the bodice, and occasionally, the skirt. The hair is dressed in a high knot (*moño*) from which depends a headdress (*cinta del moño*) made of black ribbon or lace. The shoulder cape (*serenero*) is peculiar to Candelario; yellow capes are sometimes worn, but green is the predominant colour. The bodice of blue or black velvet is laced over a neckerchief of silk or velvet. The circular skirt made of broadcloth in two colours, bordered with black velvet and faced with scarlet cloth, falls in a crease at the centre front and in bell-shaped folds at either side. Stockings of white cotton, hand knit in an openwork design, are worn with shoes of black velvet and patent leather.



COPYRIGHT, 1931, BY
THE HISPANIC SOCIETY OF AMERICA

R.44631

WOMEN'S FESTIVAL DRESS CANDELARIO, SALAMANCA

FROM PHOTOGRAPHS
IN THE COLLECTION OF
THE HISPANIC SOCIETY OF
AMERICA

WITH COMPARATIVE MATERIAL



P(12246)

The festival dress of the women of Candelario is made of rich materials: silk, broadcloth, and velvet. Hand embroidery adorns the pocket, the bodice, and occasionally, the skirt. The hair is dressed in a high knot (*moño*) from which depends a headdress (*cinta del moño*) made of black ribbon or lace. The shoulder cape (*serenero*) is peculiar to Candelario; yellow capes are sometimes worn, but green is the predominant colour. The bodice of blue or black velvet is laced over a neckerchief of silk or velvet. The circular skirt made of broadcloth in two colours, bordered with black velvet and faced with scarlet cloth, falls in a crease at the centre front and in bell-shaped folds at either side. Stockings of white cotton, hand knit in an openwork design, are worn with shoes of black velvet and patent leather.

COPYRIGHT, 1931, BY
THE HISPANIC SOCIETY OF AMERICA



R.44631



P(12249)



P(12260)



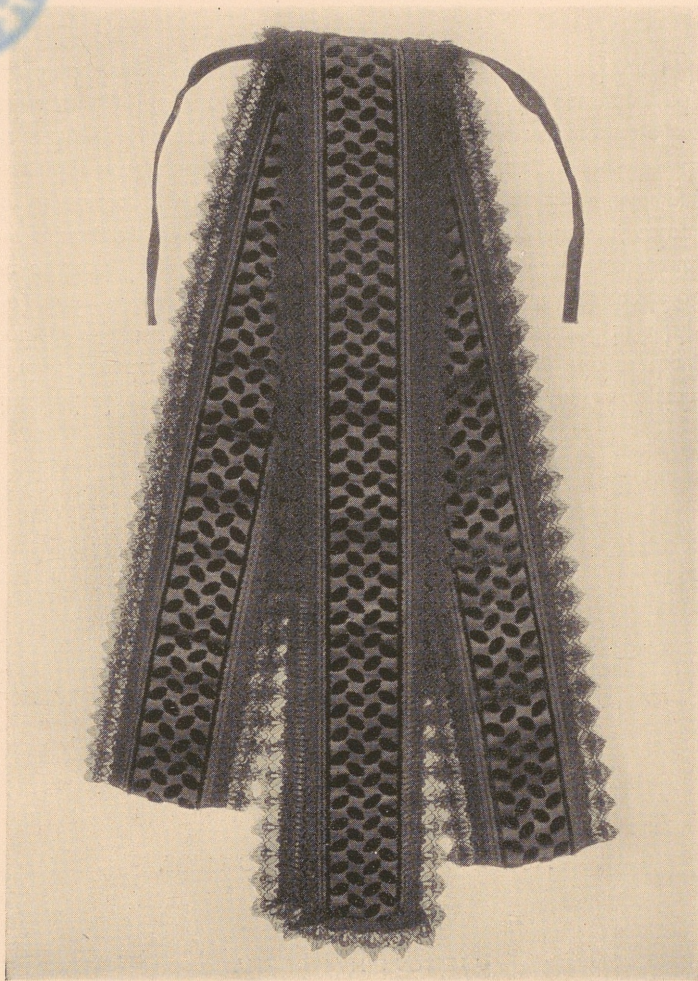
P(12266)



P(12265)



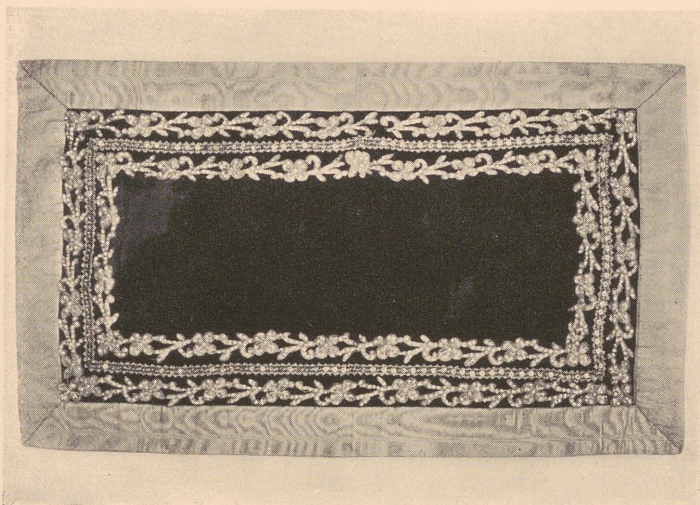
P(12264)



P(12289)



P(12292)



P(12297)



P(12305)



P(12224)



From Palencia, Isabel de. *The regional costumes of Spain.* Madrid
[c1926]. Plate 86.

WOMEN OF THE VILLAGE OF CANDELARIO
BY MANUEL BENEDITO VIVES

