

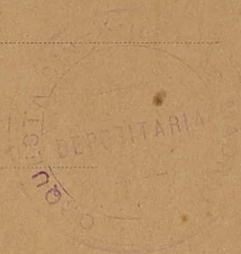
Timbal

Orquesta Sinfónica de Madrid

Núm -47-

SAKUNTALA (OVERTURA)

GOLDMARK



OUVERTURE de SAKUNTALA.

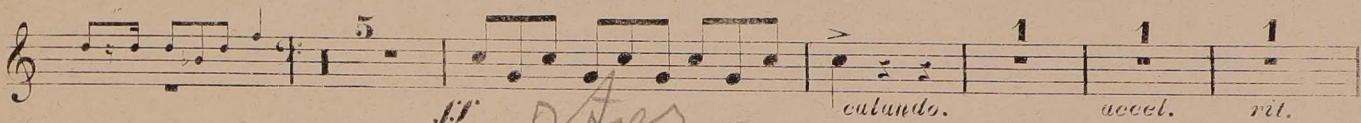
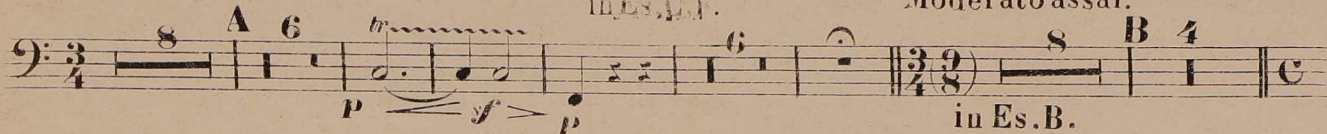


CARL GOLDMARK Op. 13.

Andante assai.

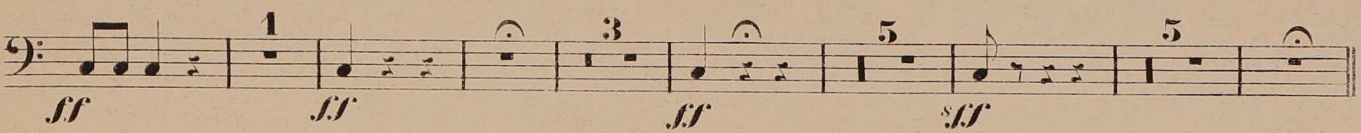
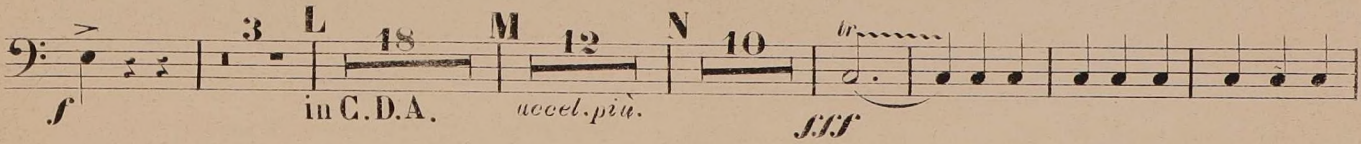
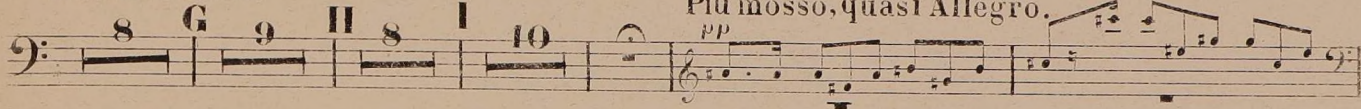
TIMPANI.
in Es. G.F.

Moderato assai.



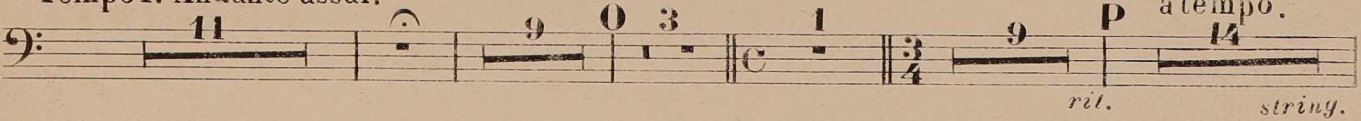
Andante assai.

Più mosso, quasi Allegro.

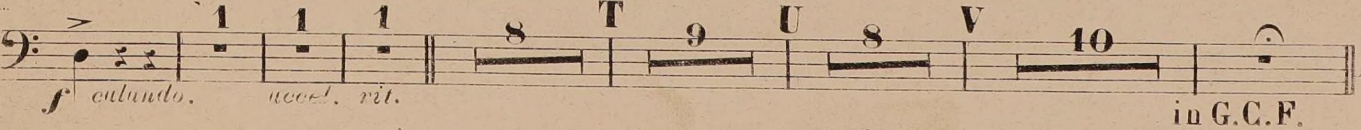


Tempo I. Andante assai.

Moderato assai.



Andante assai.



TIMPANI.

3 3 W 8 X 6
 a tempo. a tempo. a tempo. accel. *sf*

Più mosso. *tr* Z
spp 1 2 3 4 5 6 7 8 9 10 11 12 13

tr Aa
 14 15 16 17 18 *cresc.* 1 2 3 4 5 6 7 8

tr *tr*
 9 10 *f* 1 > 2 > 3 > 4 > *cresc.* 1 2 3 4

f *rit.* Poco meno, Tempo I°
 1 2 3 4 5 6 7

Ab 8 9 10 11 12 4 *tr* *tr* *tr*
fff

Più mosso, quasi All°
 5 Ac 6 *tr*
 5 *p* 1 2 3 *cresc.* 4 5 6

tr Più mosso, All° vivace. 1 Ad 9
ffa *ff*

Ae Più mosso, quasi Presto.
 2 2

tr *tr*