



Handwritten musical notation on a five-line staff. The key signature is one sharp (F#). The notation includes notes with stems and beams, and rests. Dynamic markings include *pp*, *mf*, *dir*, and *ff*. A tempo marking *allegro* is written above the staff. A circled '2' is written above the first measure.

Handwritten musical notation on a five-line staff, continuing the piece with notes and rests.

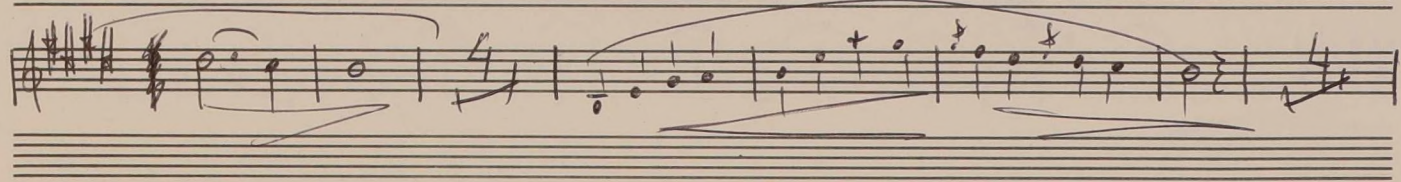
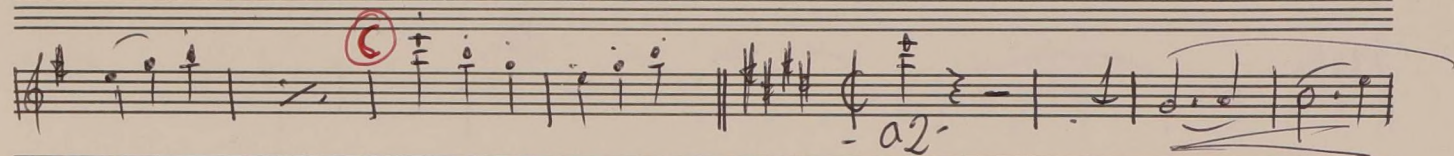
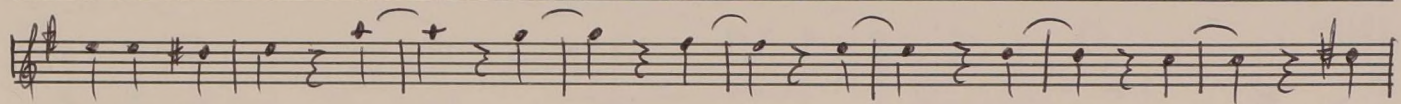
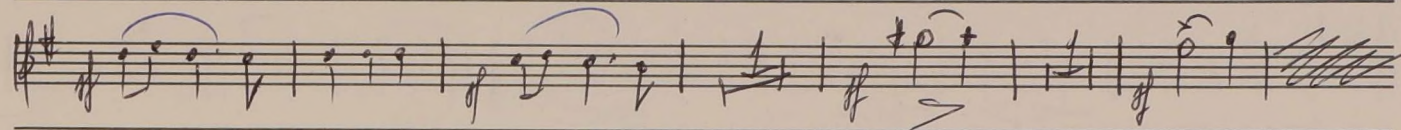
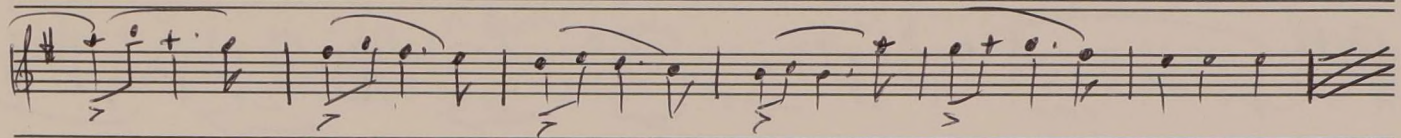
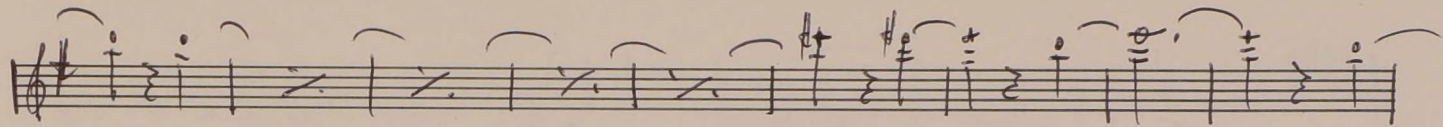
Handwritten musical notation on a five-line staff. A circled 'B' is written above the staff. A *cres* marking is written below the staff. The notation includes notes and rests.

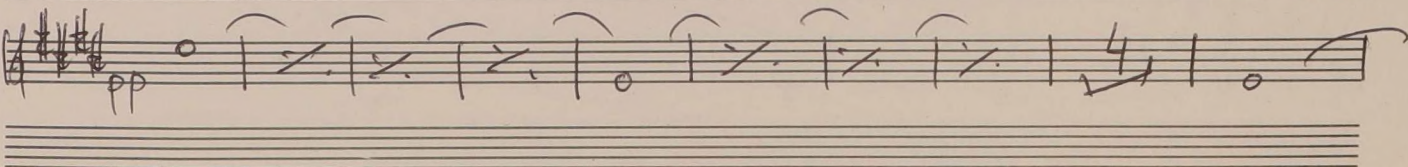
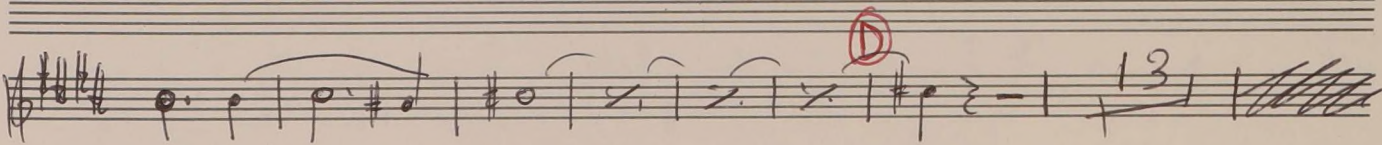
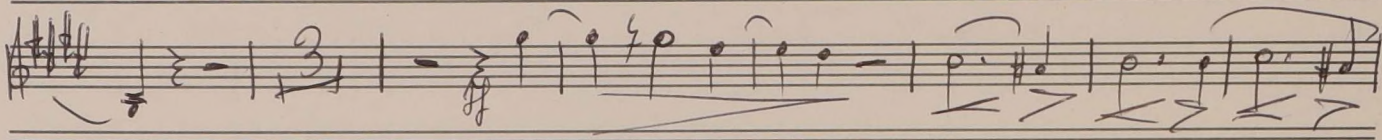
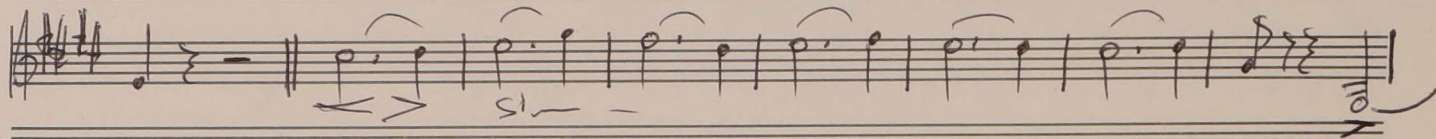
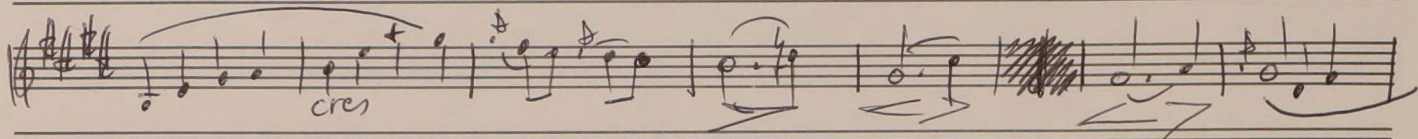
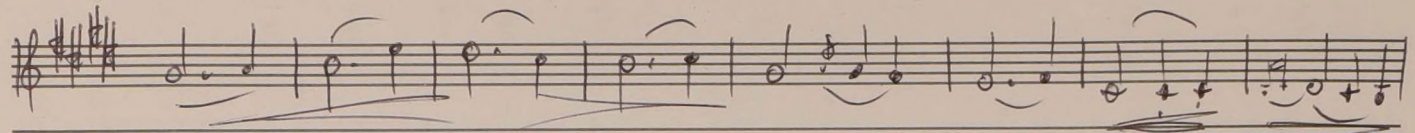
Handwritten musical notation on a five-line staff, featuring notes and rests.

Handwritten musical notation on a five-line staff. It includes rests, a *pp* marking, and a *ff* marking. There are also some numerical markings like '4' and '13' above the staff.

Handwritten musical notation on a five-line staff. It includes notes, rests, and a *mf* marking. The piece ends with a double bar line and some scribbles.











Handwritten musical notation on a single staff. The key signature has one sharp (F#). The notation includes quarter notes, eighth notes, and half notes, some with slurs and accents. A dynamic marking *ral.* is written above the staff.

Handwritten musical notation on a single staff. The key signature has one sharp (F#). The notation includes quarter notes and half notes, some with slurs. A dynamic marking *ppaz* is written below the staff.

Handwritten musical notation on a single staff. The key signature has one sharp (F#). The notation includes quarter notes and eighth notes, some with slurs and accents.

Handwritten musical notation on a single staff. The key signature has one sharp (F#). The notation includes quarter notes and eighth notes, some with slurs and accents. A dynamic marking *cres* is written below the staff.

Handwritten musical notation on a single staff. The key signature has one sharp (F#). The notation includes quarter notes and eighth notes, some with slurs and accents.

Handwritten musical notation on a single staff. The key signature has one sharp (F#). The notation includes quarter notes and eighth notes, some with slurs and accents. A dynamic marking *cres* is written below the staff. There are two circled letters, **F** and **K**, above the staff. Below the staff, there is a blue scribble and the number **4** written vertically.



*poco a poco cres*