

3

VIOLA

Aufführungsrecht vorbehalten



SYMPHONIE E-DUR

Franz Schubert, op. posth.

Ausgeführt von Felix Weingartner

I

341

Adagio ma non troppo

pp *pizz.*

*arco* *ff* *pizz.* *pp* *arco*

*ff* *ff* *decresc.*

*p* *pp* 2 *pp*

*cresc.* *sf*

2 *p* *cresc.*

*sf* *f* *fp*

*ff* *sf* *sf* *ff*

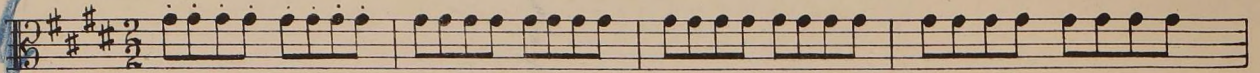
*poco più Adagio*

3 *pizz.* *arco* *mf* *p* 1

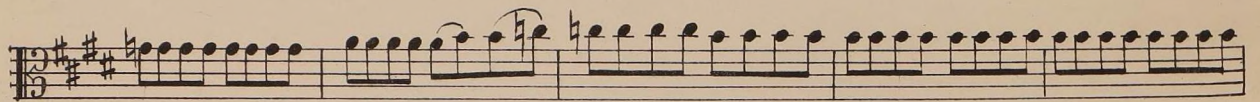
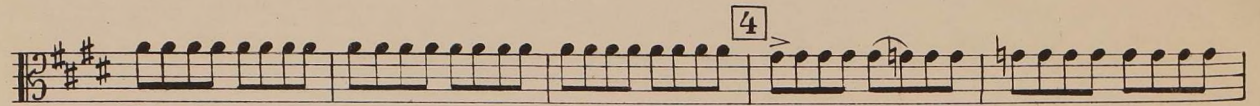
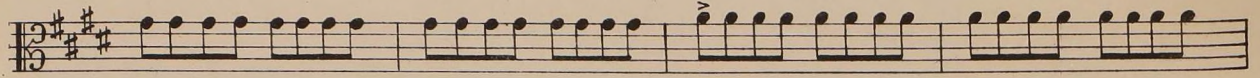


# Viola

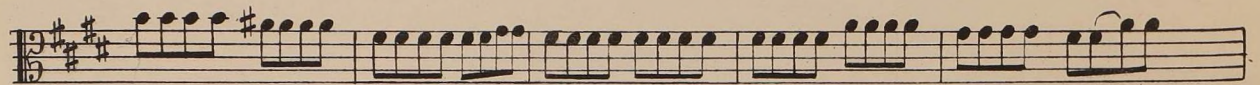
*Allegro*



*pp* *leggero*



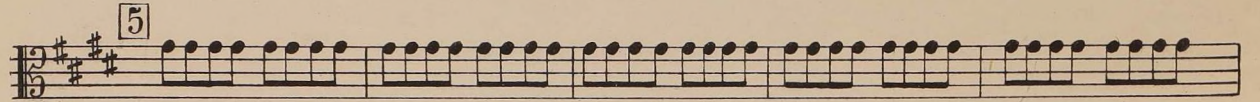
*poco a poco cresc.*



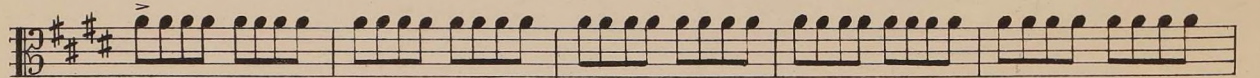
*mf*

*p*

*dim.*

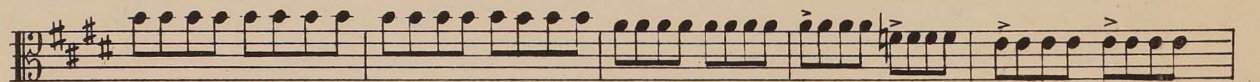


*pp*



*cresc.*

*mf* — *p*



*cresc.*

*mf*

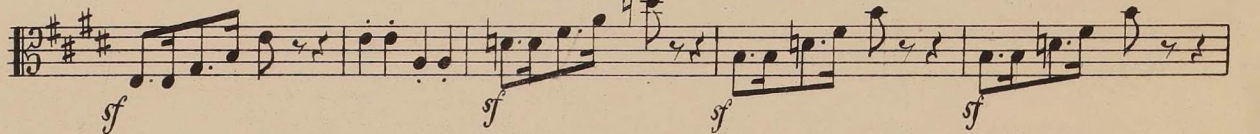


*cresc.*

*Vivo*

*ff*

*sf*

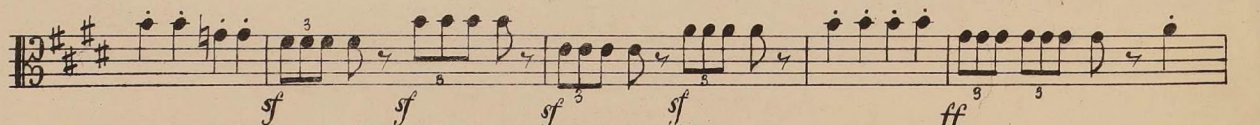


*sf*

*sf*

*sf*

*sf*



*sf*

*sf*

*sf*

*sf*

*ff*



Viola

ff *sf sf*

*sf sf sf sf*

*sf sf*

*sf sf sf sf sf sf sf sf*

8 *poco rit. a tempo, ma poco meno mosso*  
*mf leggiero*

9

*poco espr.*

*pp poco meno p*

10 *sempre pp e legg.*

*mf div. p poco espr.*

*f*

11 *pp*



# Viola

(poco grave)

tempo vivo

First staff of music with dynamic markings: *cresc.*, *f*, *ff*

Second staff of music with dynamic markings: *p*

12

Third staff of music with dynamic markings: *f*, *p*

Fourth staff of music with dynamic markings: *mf*, *p*, *cresc.*

Fifth staff of music with dynamic marking: *f*

13

div.

Sixth staff of music with dynamic marking: *fp*

Seventh staff of music with dynamic markings: *fp*, *cresc.*, *ff*

14

Eighth staff of music with dynamic markings: *ff*, *pizz.*, *arco*, *p*

tempo del principio

Ninth staff of music with dynamic marking: *pp legg.*

Tenth staff of music with dynamic markings: *f*, *fp*

15

Eleventh staff of music with dynamic markings: *f*, *fp*

Twelfth staff of music with dynamic markings: *f*, *fp*



Viola

The musical score for Viola consists of ten staves of music. The key signature is three sharps (F#, C#, G#) and the time signature is 3/8. The score includes various dynamics and articulations:

- Staff 1: *f*, *fp*
- Staff 2: *mf*, *p*, *pp*
- Staff 3: *fp*, *fp*, *fp*
- Staff 4: *cresc.*, *mf*
- Staff 5: *cresc.*
- Staff 6: *div.*, *f*
- Staff 7: *ff*
- Staff 8: *sf*, *sf*, *sf*
- Staff 9: *sf*, *sf*, *ff*, *div.*, *sf*, *unis.*
- Staff 10: *sempreff*, *sf*, *sf*, *sf*, *sf*

Measures 16 and 17 are marked with box numbers. Measure 17 is marked *Vivo*. Measure 18 is marked with a box number.



Viola

*poco rit. . . . . a tempo, ma poco meno mosso*

ff dim. . . . . pp

poco cresc. . . . . mf

19 *div. sempre pp e legg.* unis. 3

*dir.* mf

*p cantando* unis. *dir.*

20 *mf* *pp*

*p poco espr.* *cresc.* *fp*

*Tempo Vivo* ff

21 *p* *f*

*p* *espr.* *mf*



Viola

Handwritten 'P' in blue ink above the staff.

*p* *cresc.*

22

*f* *fp*

22 *div.*

*fp* *cresc.* *ff*

23 *ff* *pizz.* *arco* *p* *pp*

*div. pizz.* *p* *mf*

*arco* *p* *pp leggero*

24

*f* *cresc.* *ff* *p legg.*

*cresc.* *f*

*fp* *f* *cresc.* *ff*

25 *ff* *poco largo* *ff molto espr.*

*ritenuto* *ff* *sf* *ff* *ff*



# Viola

## II.

*Andante*

Musical score for Viola II, measures 25-31. The score is in 6/8 time with a key signature of two sharps (F# and C#). It features various dynamics including *p*, *pp*, *mf*, *f*, *ff*, and *cresc.* There are also performance markings like "1. VI.", "2?", and "3". Handwritten blue annotations include a "9" and "ritard.".



# Viola

31

Measures 31 and 32. Measure 31 starts with a piano (*p*) dynamic and includes a forte (*f*) dynamic. Measure 32 begins with a mezzo-forte (*mf*) dynamic, followed by a piano (*p*) dynamic, a crescendo (*cresc.*), and ends with a fortissimo (*fp*) dynamic.

Continuation of measures 31 and 32. Measure 31 continues with a mezzo-forte (*mf*) dynamic, transitioning to piano (*p*). Measure 32 continues with a mezzo-forte (*mf*) dynamic.

33

Measures 33 and 34. Measure 33 starts with a piano (*p*) dynamic. Measure 34 includes mezzo-forte (*mf*), forte (*f*), fortissimo (*ff*), and forte (*f*) dynamics.

34

Measures 34 and 35. Measure 34 continues with fortissimo (*ff*) and forte (*f*) dynamics, followed by a decrescendo (*dim.*) to piano (*p*). Measure 35 starts with fortissimo (*ff*) and forte (*f*) dynamics.

Continuation of measures 34 and 35. Measure 34 continues with mezzo-forte (*mf*) and piano (*p*) dynamics. Measure 35 includes a piano (*p*) dynamic and a *poco rit.* marking.

*poco rit.*

*atempo*

35

Measures 35 and 36. Measure 35 includes a crescendo (*cresc.*) and forte (*f*) dynamic. Measure 36 includes a piano (*p*) dynamic and a *p sub.* marking.

*cresc.*

*p sub.*

*poco a poco più tranquillo sin al Fine*

Continuation of measures 35 and 36. Measure 35 continues with mezzo-forte (*mf*) and piano (*p*) dynamics.

Continuation of measures 35 and 36. Measure 35 continues with forte (*f*) and *espr.* dynamics. Measure 36 includes a piano (*p*) dynamic.



Viola

III.

Scherzo  
Allegro deciso

The musical score for Viola, Scherzo, Allegro deciso, is written across ten staves. The key signature has one sharp (F#) and the time signature is 3/4. The score includes various dynamics and performance instructions:

- Staff 1: *f*
- Staff 2: *sf*, *G.F.*, **36**, *pizz.*, *p*
- Staff 3: *arco*, *f*
- Staff 4: *pizz.*, *arco*, *p*
- Staff 5: **37**
- Staff 6: *pizz.*, **38**, *arco*, *sempre p*
- Staff 7: *pizz.*, *mf*
- Staff 8: *pp*, *div.*, **39**, *unis. arco*, *sfp*, *sfp*, *sfp*, *sf=f sempre*
- Staff 9: *tr*, *tr*, *tr*, *tr*
- Staff 10: *f*, *f*, *f*, *f*, *p cantando*



# Viola

40

*pizz.* *arco*  
*f* *dim.* *p cantando*

*cresc.* *f* *cresc.*

*ff* *pp legg.*

*2. Fine* *G.P.* *Meno mosso* *div.*  
*p cantando*

41

*pp* *p cantando*

*mf espr.* *mf* *unis.* *div.*

42 *unis.* *pizz.* *mf* *p*

43 *div. arco* *cantando*

*mf* *p* *f*

*p poco a poco accel.* *p cantando* *pp*

*4* *mf cresc.* *f*

Da Capo al Fine.



# Viola

## IV.

*Allegro vivace*

pp

44

45

p mf p

46

f ff div.

sf sf unis.

sf sempreff



Viola

*div.*

Musical score for Viola, measures 47-50. The score is written in G major (one sharp) and 3/4 time. It consists of two staves per system. The first system (measures 47-48) features a melodic line with accents and a supporting line with chords. The second system (measures 49-50) is dominated by triplet patterns. Handwritten blue annotations include a bracket under measures 49-50 and a large blue scribble at the end of the piece.

Measures 47-48: *sf*, *sf*, *sf*, *unis.*, *sf*, *mf*

Measure 48: **48**, *p*

Measures 49-50: *pp*, *mf*, *p*, *pp*, **49**, *pp sempre*, **50**, *pizz.*, *mf*

Handwritten: *Pizz*



# Viola

51

*div. arco*

*unis.*<sub>3</sub>

3

3

52

53

*div.*

54

55

56

*can impeto*



# Viola

*sf sf sf dim. - - - - - p*

Staff with rhythmic accompaniment.

57 *poco riten. atempo*  
4 *p pp*

58

Staff with rhythmic accompaniment.

59 *p legg.*

Staff with rhythmic accompaniment.

60 *pizz. p*

*arco mf cantabile* 61

*pizz. p arco p*

Staff with rhythmic accompaniment.

62 *div. f unis.*



# Viola

*p cresc.* *ff* *mf*

**63** *pizz.* *mf* *p*

*arco* *div.* *unis.* *cresc.*

*div.* **64** *ff* *sf*

*sf* *div.* *unis.* *sf*

*div.* *unis.* *ff* *sf*

**65** *sf* *sf* *p con grave*

*mf espr.*

**66** *p*

*pp*

*mf*

*p*



# Viola

3 3 3 3 3 3

3 3 3 3 3 3

67

3 3 3 3 3 3

poco rit.

pp sempre

3 3 3 3 3 3

Lranquillo

3 3 3

Tempo I pizz.

p legg.

3 3 3 3 3 3

68 arco

p

3 3 3 3 3 3

mf melodioso



# Viola

69 <sup>3</sup>  
*p*

70 *f* *cresc.* *p*

71 *div.* *ff*

*sf* *sf* *p*

*f*

72 *p* *cresc.* *f*

*ff* 1

*ff sempre*

73 *div.*

*fff*



Viola

74

sf *dim.* - - - - - *p*  
*pp*

75

1 2 3 4 5 6 7  
*pp sempre*

8 76

77

78

79

80

81

*sempre pp*

82

83

*pp*  
*atempo*

*poco rit.*

84

85

86

87