

2

FLAUTA 2^{da}

Orquesta Sinfónica de Madrid

Número 302

EL ALBAICIN



ALBENIZ ARBOS

Al 25/11

Marta 2^a

El Albaicin =

Handwritten musical score for guitar, titled "Marta 2^a El Albaicin". The score is written on ten staves in G major (one sharp) and 3/8 time. It begins with the tempo marking "Allegro" and a 16-measure introduction. The piece is divided into sections A, B, C, and D. Section A (measures 17-24) features a melodic line with dynamics *pp*, *sf*, and *f*. Section B (measures 25-32) includes a bass line with dynamics *p*, *sf*, and *pp*, and a melodic line with dynamics *mf* and *p*. Section C (measures 33-40) is a rhythmic pattern with accents and trills. Section D (measures 41-48) is marked "1^o tempo" and includes dynamics *p*, *f*, and *ritar*. The score concludes with a double bar line and a signature.

1-2

2^o 1^o

Poco meno

poco meno mosso

2^o 1^o Poco meno 2^o 1^o Poco meno

2^o 1^o

poco meno mosso

2^o 1^o

2^{do} 1^o *poco meno* *2^{do} 1^o*

K

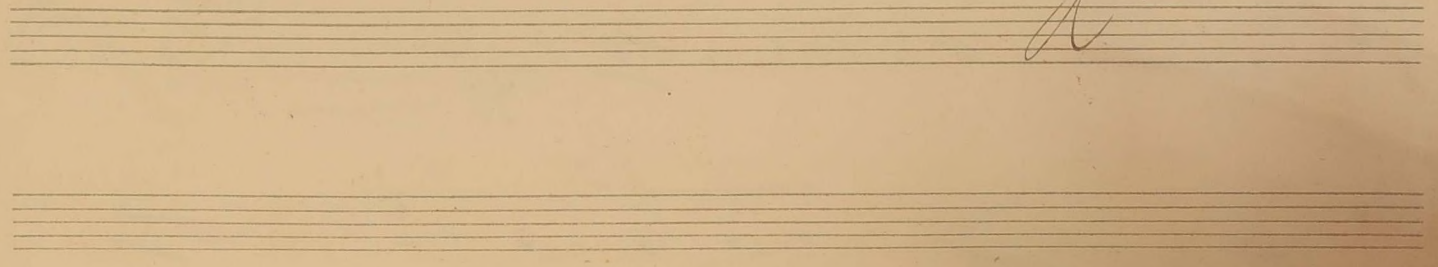
M

N

piu mosso

O

ff



Handwritten musical notation on a single staff, featuring treble clef, a key signature of two sharps (F# and C#), and a 3/4 time signature. The notation includes various rhythmic values such as eighth and sixteenth notes, often beamed together, and rests.

Handwritten musical notation on a single staff, continuing the piece. It includes dynamic markings such as *mf* and *f*, and a fermata symbol above the staff.

Handwritten musical notation on a single staff, featuring a *loco* marking and a *Q* (quasi) marking. The notation includes complex rhythmic patterns and accidentals.

Handwritten musical notation on a single staff, including a *loco* marking and a fermata symbol. The notation shows a continuation of the melodic and harmonic material.

Handwritten musical notation on a single staff, featuring a *R* (ritardando) marking. The notation includes various rhythmic values and accidentals.

Handwritten musical notation on a single staff, showing a continuation of the piece with various rhythmic and melodic elements.

Handwritten musical notation on a single staff, including a *ff* (fortissimo) dynamic marking and a fermata symbol. The notation features complex rhythmic patterns.

Handwritten musical notation on a single staff, showing a continuation of the piece with various rhythmic and melodic elements.

Handwritten musical notation on a single staff, including a *pp* (pianissimo) dynamic marking and a fermata symbol. The notation features complex rhythmic patterns.

Handwritten musical notation on a single staff, including a *ff* (fortissimo) dynamic marking and a fermata symbol. The notation features complex rhythmic patterns.

Musical staff with treble clef, key signature of two sharps (F# and C#), and a common time signature. The staff contains several measures of music with dynamic markings *p* and *sf*. A fermata is placed over the final note of the first measure. A large 'V' is written above the staff.

Musical staff with a common time signature. The text "poco meno mosso" is written above the staff. The staff contains several measures of music with dynamic markings *pp* and *ppp*. A large 'W' is written above the staff.

Musical staff with treble clef, key signature of two sharps, and a common time signature. The staff contains several measures of music with dynamic markings *ppp*. A large '1' is written above the staff.

Musical staff with treble clef, key signature of two sharps, and a common time signature. The staff contains several measures of music with dynamic markings *pp* and *mf*.

Musical staff with treble clef, key signature of two sharps, and a common time signature. The staff contains several measures of music with dynamic markings *pp*, *p rit. pesante*, and *pp*. A large 'X' is written above the staff.

Musical staff with treble clef, key signature of two sharps, and a common time signature. The staff contains several measures of music with dynamic markings *pp* and *dolce*. A large 'RR' is written above the staff.

Musical staff with treble clef, key signature of two sharps, and a common time signature. The staff contains several measures of music with dynamic markings *ppp* and *pp dolce*. A large 'Y' is written above the staff.

Musical staff with treble clef, key signature of two sharps, and a common time signature. The staff contains several measures of music with dynamic markings *pp* and *ppp*. The text "ritar pesante" is written above the staff.

Musical staff with treble clef, key signature of two sharps, and a common time signature. The staff contains several measures of music with dynamic markings *pp*. The text "vivo." is written below the staff.

Musical staff with treble clef, key signature of two sharps, and a common time signature. The staff contains several measures of music with dynamic markings *pp*. A large 'AA' is written above the staff.

Handwritten musical notation on a page with ten staves. The first two staves contain musical notation, while the remaining eight are blank.

The first staff begins with a treble clef, a key signature of two sharps (F# and C#), and a time signature of 8/8. The notation includes a whole note chord, followed by a series of eighth notes and sixteenth notes, some with slurs and accents. Above the staff, there are handwritten letters "BB" and "CC".

The second staff continues the musical notation with similar rhythmic patterns and includes a handwritten "sc" below the staff.