

Frompa 2<sup>a</sup>

Danzas.

224

de

El Principe Ygor.

de

Boredine



*Grave* (En Fa)

Musical staff with treble clef and 6/8 time signature. It contains a sequence of notes: a quarter note G, an eighth note A, an eighth note B, a quarter note C, a quarter note D, a quarter note E, a quarter note F, and a quarter note G. This is followed by three measures, each containing a single half note G.

Musical staff with notes and letter labels. It starts with a double bar line. The first measure is labeled 'A' and contains a quarter note G. The second measure is labeled 'B' and contains a quarter note A. The third measure is labeled 'C' and contains a quarter note B. The fourth measure is labeled 'D' and contains a quarter note C. The staff ends with a quarter note G.

Musical staff with notes and slanted lines. It contains a quarter note G, followed by a slanted line, a quarter note A, a slanted line, a quarter note B, a slanted line, a quarter note C, a slanted line, a quarter note D, a slanted line, and a quarter note E.

Musical staff with notes and slanted lines. It contains a quarter note G, a quarter note A, a quarter note B, a quarter note C, a quarter note D, a slanted line, a quarter note E, a quarter note F, a quarter note G, and a quarter note A.

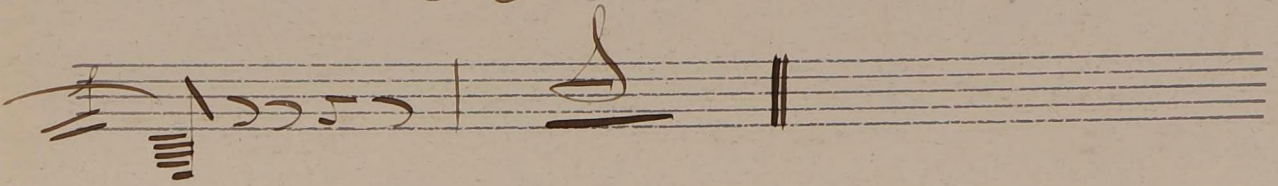
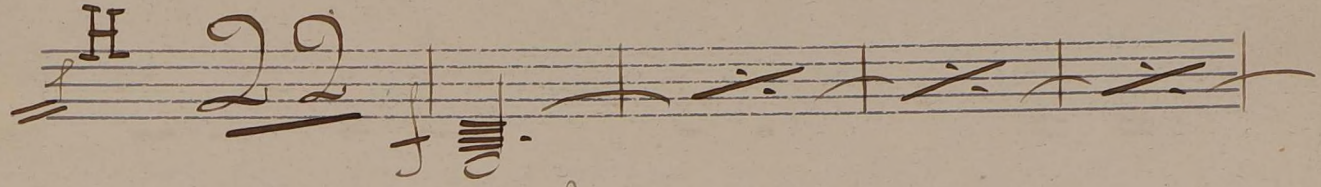
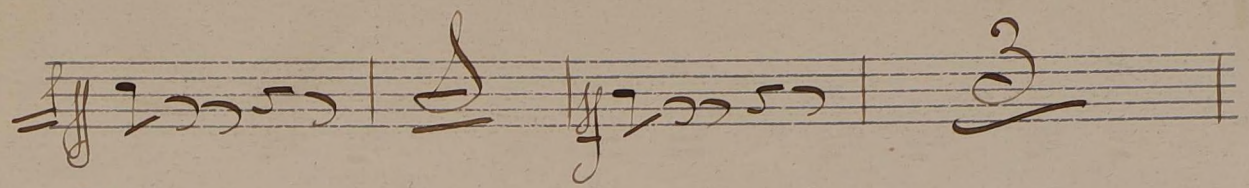
Musical staff with notes and slanted lines. It contains a quarter note G, a slanted line, a quarter note A, a slanted line, a quarter note B, a slanted line, a quarter note C, a slanted line, a quarter note D, a slanted line, a quarter note E, a slanted line, and a quarter note F.

Musical staff with notes and a large '2'. It contains a quarter note G, a quarter note A, a quarter note B, a quarter note C, a quarter note D, a large '2' (possibly a fermata or a measure rest), a quarter note E, a quarter note F, a quarter note G, and a quarter note A.

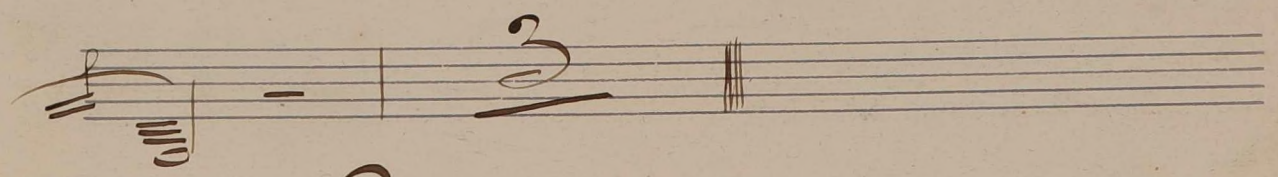
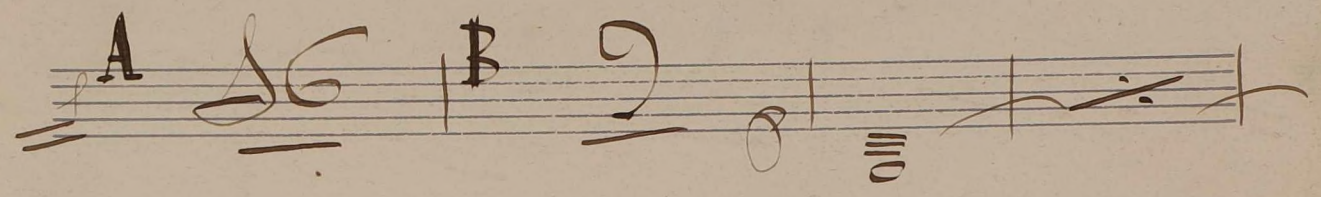
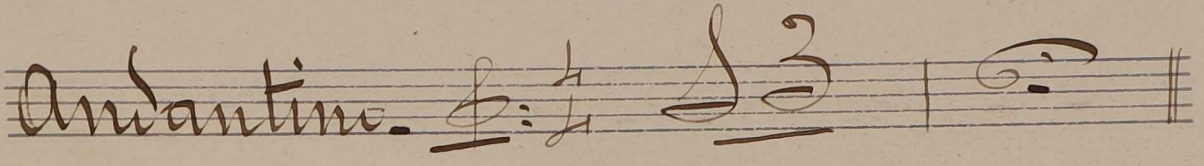
Musical staff with notes and letter labels. It contains a quarter note G, a quarter note A, a quarter note B, a quarter note C, a quarter note D, a large '3' (possibly a measure rest), a quarter note E, a quarter note F, a quarter note G, and a quarter note A.

Musical staff with notes and a '3°' marking. It contains a quarter note G, a '3°' marking, a quarter note A, a quarter note B, a quarter note C, a quarter note D, a quarter note E, a quarter note F, a quarter note G, and a quarter note A.

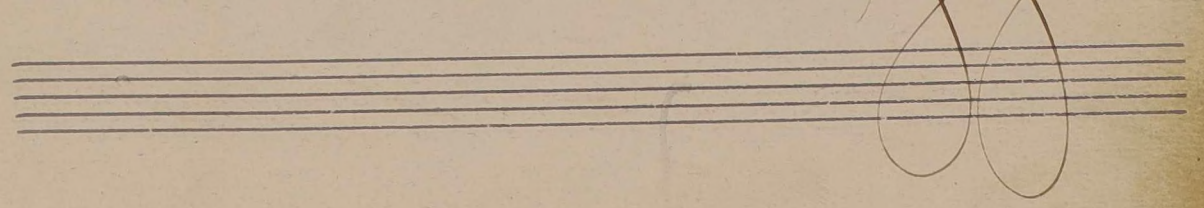
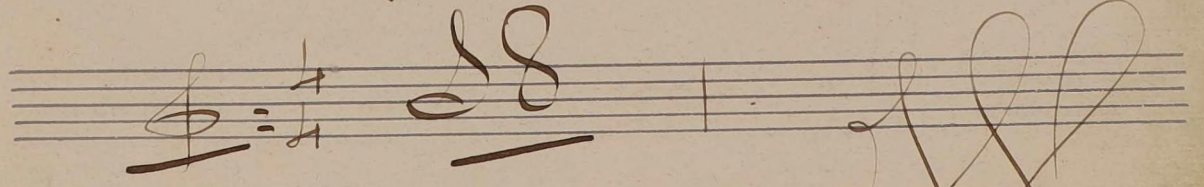
Musical staff with notes. It contains a quarter note G, a quarter note A, a quarter note B, a quarter note C, a quarter note D, a quarter note E, a quarter note F, a quarter note G, and a quarter note A.



Introduccion.



allegro vivo.



C

Handwritten musical score for a piano piece, consisting of ten staves. The notation includes various rhythmic values, slurs, and dynamic markings such as *p*, *mf*, and *f*. The piece concludes with a double bar line and the word *cresc.* written below the staff.

*poco a poco*

*allegro.*

Handwritten musical score on ten staves. The notation includes various notes, rests, and dynamic markings such as accents and slurs. The key signature is one sharp (F#). The score concludes with a double bar line, a boxed letter 'E', and the number '36' written in a large, decorative script.

A large, decorative flourish or signature written in the bottom right corner of the page, consisting of several overlapping loops and elegant curves.

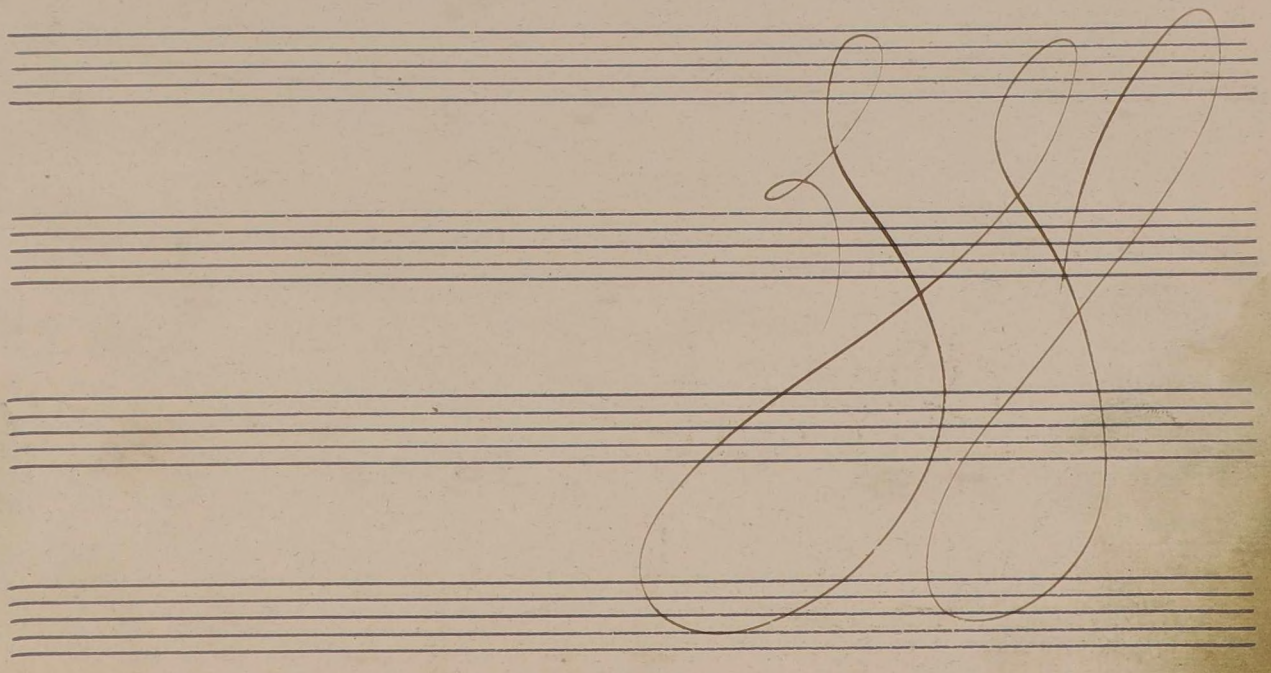
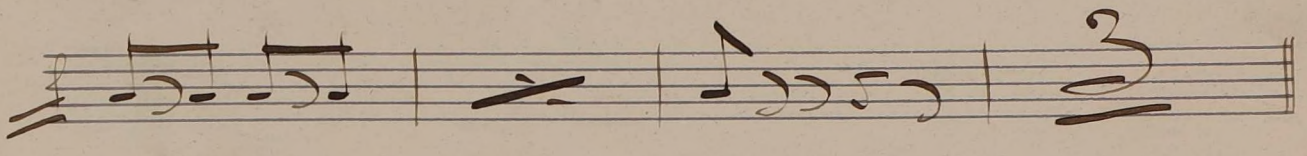
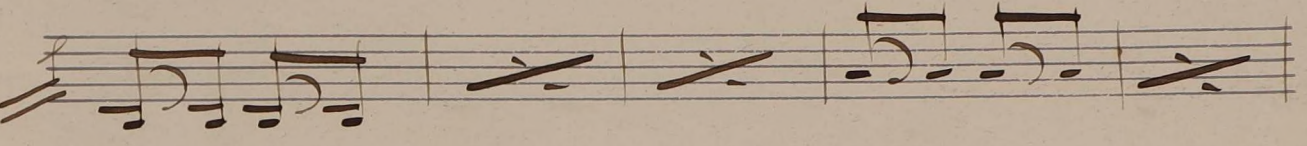
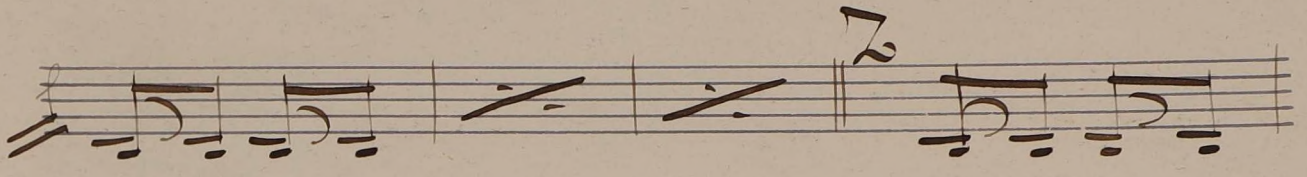
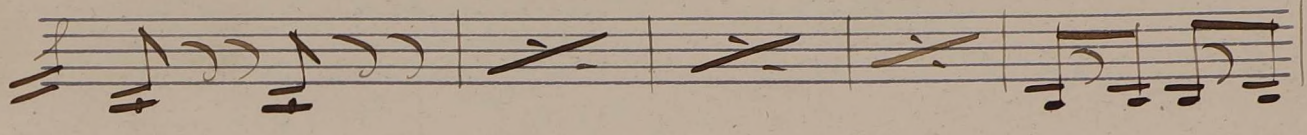
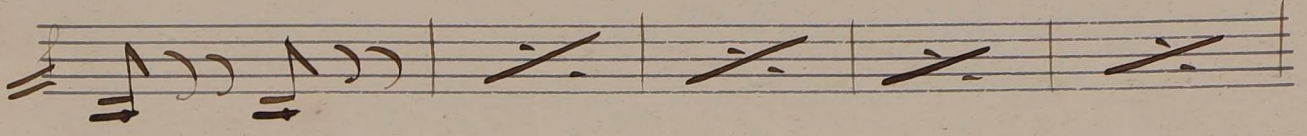
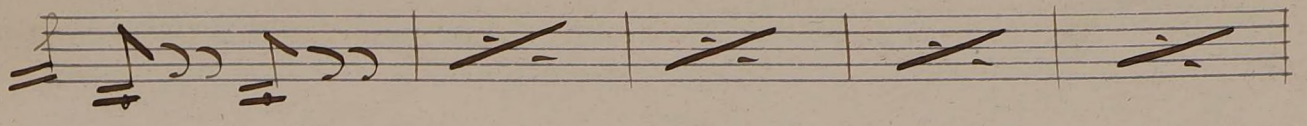
36

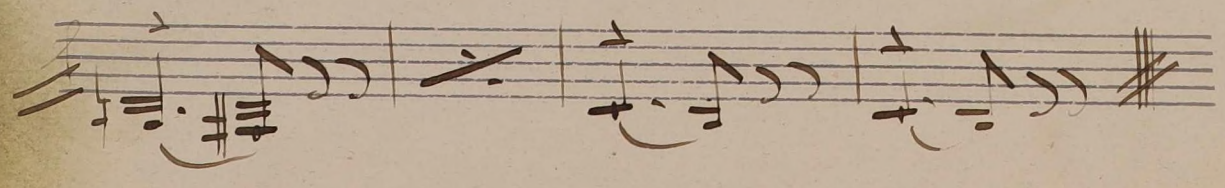
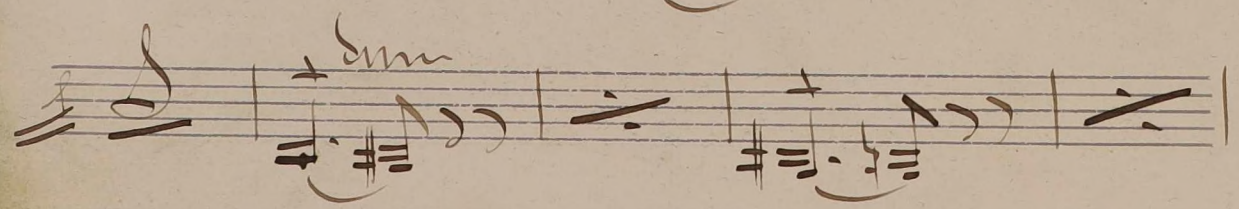
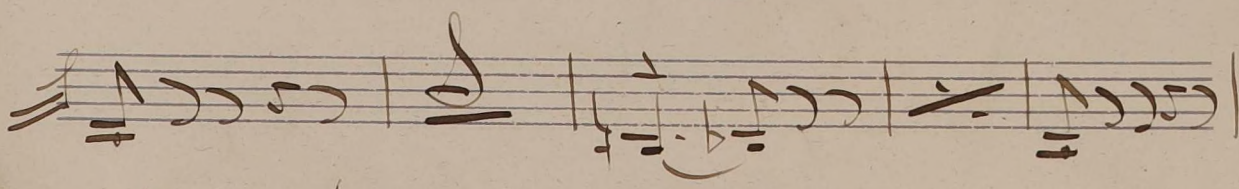
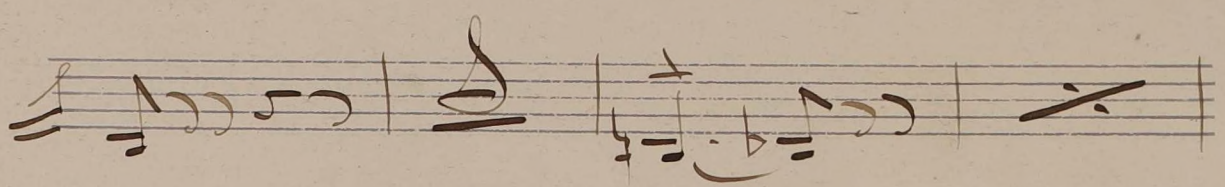
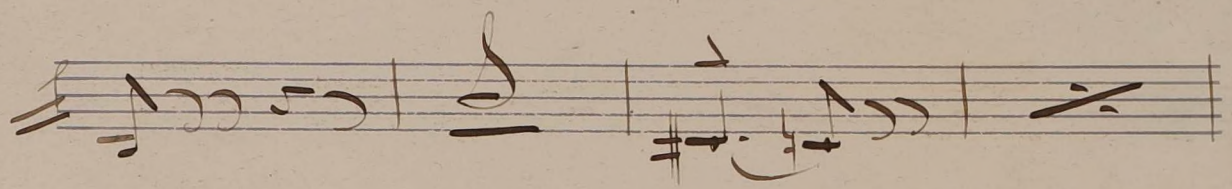
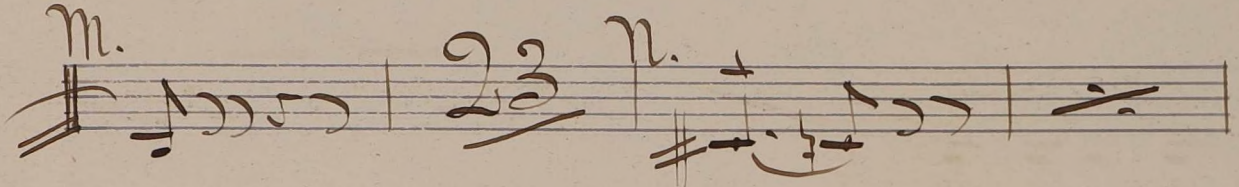
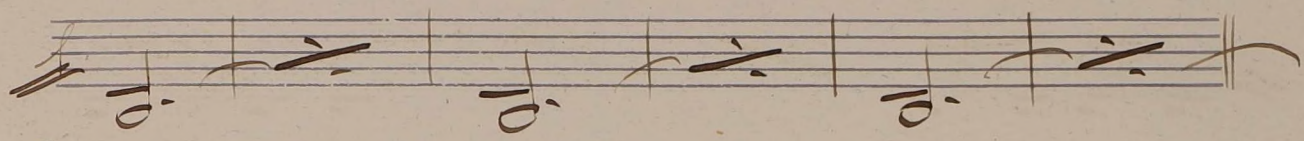
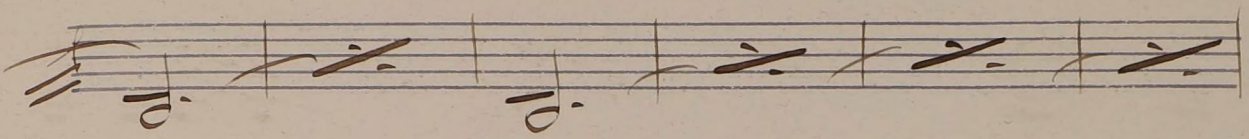
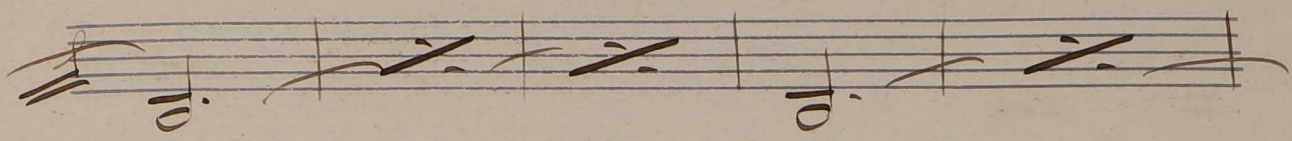
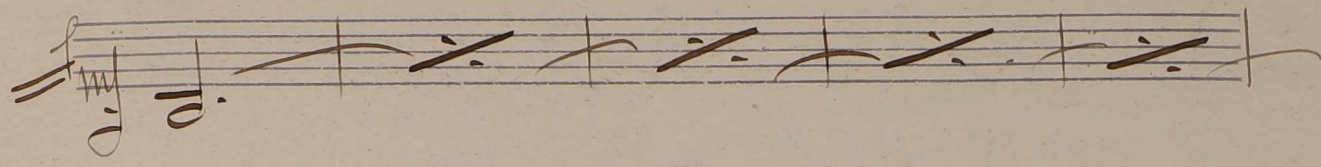
F

Handwritten musical score for measures 36 through 45. The notation is on a single staff with a treble clef and a key signature of one sharp (F#). The music consists of a sequence of notes and rests, with some measures containing slurs and dynamic markings. Measure 36 starts with a forte (F) dynamic. The piece concludes with a double bar line and a fermata over the final note.

*Presto.*

Handwritten musical score for measures 37 through 40. The notation is on a single staff with a treble clef and a key signature of one sharp (F#). The music begins with a forte (F) dynamic and a tempo marking of *Presto*. The piece concludes with a double bar line and a fermata over the final note.







# Moderato à la Breve.

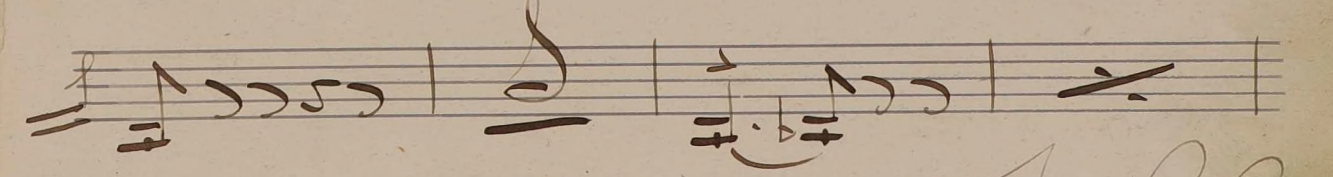
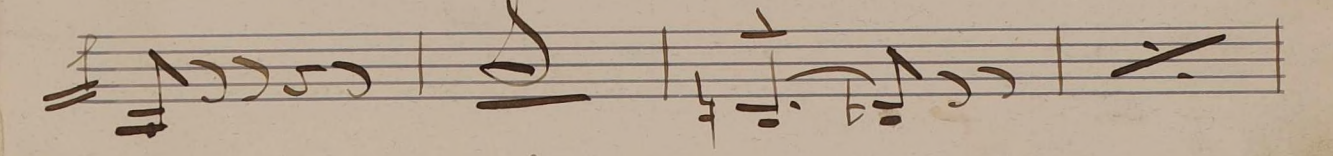
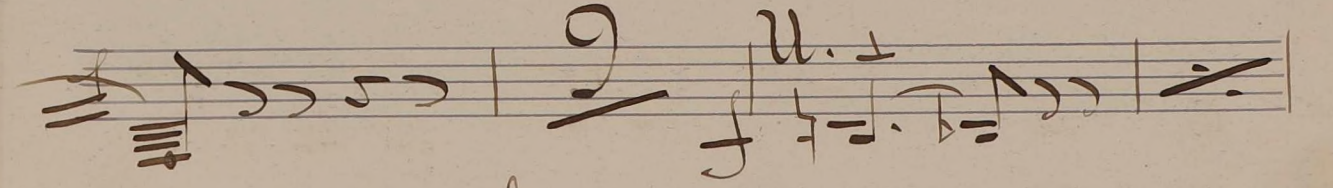
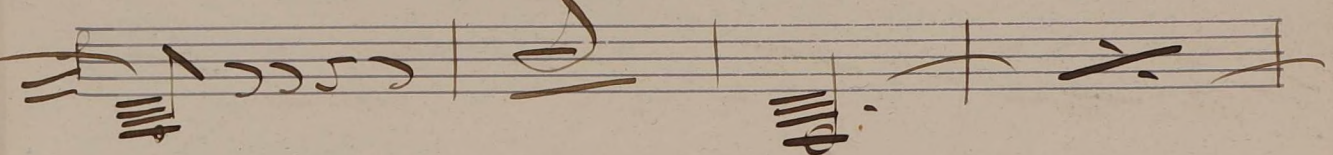
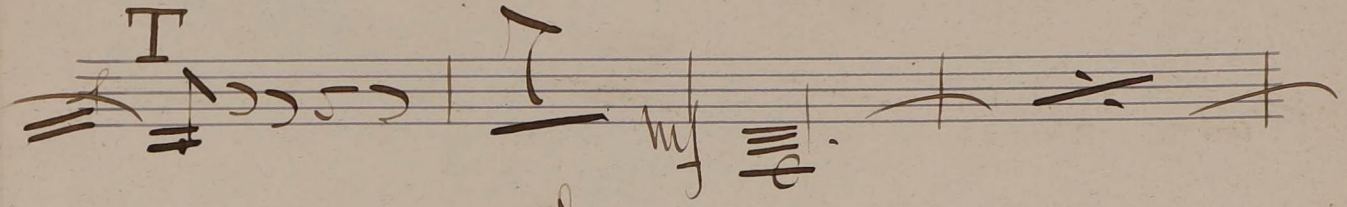
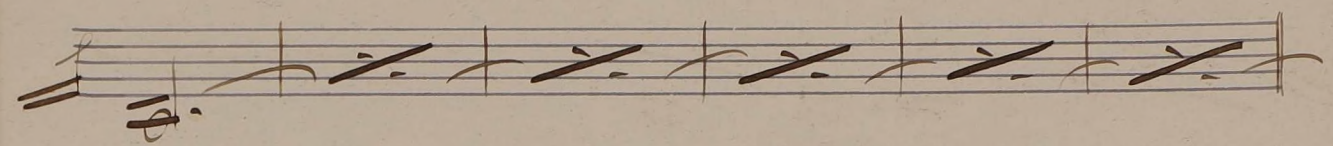
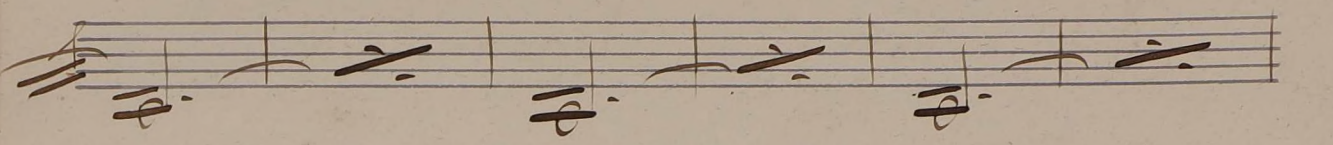
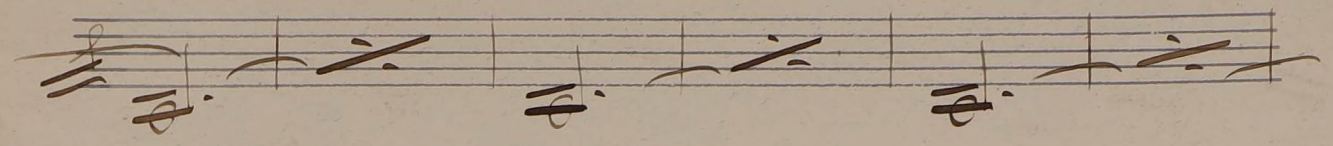
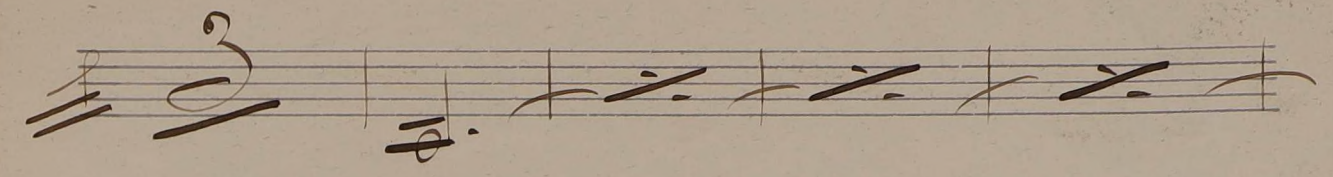
♩ = 2/2 <sup>0</sup> 32 P

# Presto.

♩ = 8 19

(Andante)

**F**



Allegro con Spirito.

Giu Animato.

Handwritten musical notation on a five-line staff. The first measure contains a sequence of eighth notes. A large 'X' is written above the second measure. The staff concludes with a double bar line and a fermata.

Handwritten musical notation on a five-line staff. It begins with a treble clef and a key signature of one sharp (F#). The notation includes various note values and rests, ending with a double bar line.

Handwritten musical notation on a five-line staff. The first three measures are crossed out with diagonal lines. The fourth measure contains a sequence of eighth notes.

Handwritten musical notation on a five-line staff. It starts with a treble clef and a key signature of one sharp. The notation features several whole notes and a sequence of eighth notes. A 'u.' is written above the first measure.

Handwritten musical notation on a five-line staff. It begins with a treble clef and a key signature of one sharp. The notation consists of several whole notes, with a double bar line and a fermata at the end.

Handwritten musical notation on a five-line staff. It starts with a treble clef and a key signature of one sharp. The notation includes eighth notes and rests, ending with a double bar line.

Handwritten musical notation on a five-line staff. It begins with a treble clef and a key signature of one sharp. The notation is dense with eighth notes and rests, ending with a double bar line and a fermata.

Handwritten musical notation on a five-line staff. The first three measures are crossed out with diagonal lines. The notation includes rests and notes, ending with a double bar line and a fermata.

Handwritten musical notation on a five-line staff. It starts with a treble clef and a key signature of one sharp. The notation consists of a sequence of whole notes, ending with a double bar line and a fermata.

Four empty musical staves at the bottom of the page.