

Flauta 1^a

202

Suite

de

Lulli.

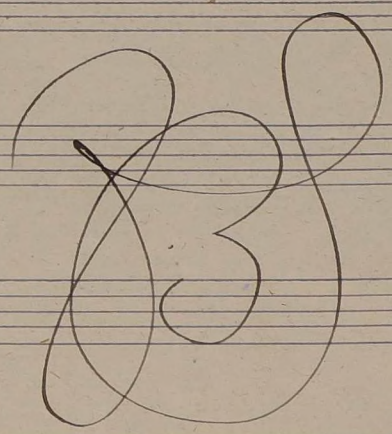


D

Handwritten musical score for a piece in D major, consisting of five staves. The notation includes various note values, rests, and dynamic markings. The first staff begins with a treble clef and a key signature of one sharp (F#). The second and third staves continue the melodic line. The fourth staff features a "Fin" marking above a fermata and the instruction "Piu moso" below. The fifth staff includes "Poco rit." above a slur, "sa" and "ra" below it, and "D.C. hasta el Fin" at the end.

No 2 = Nocturno =

Handwritten musical score for "Nocturno" in F major, 3/2 time, consisting of three staves. The first staff is titled "Poco Adagio" and includes a treble clef, a key signature of one flat (F), and a 3/2 time signature. The notation features a series of half notes and rests, with a "pp" dynamic marking. The second and third staves continue the piece, with a "pp" marking at the end of the second staff.



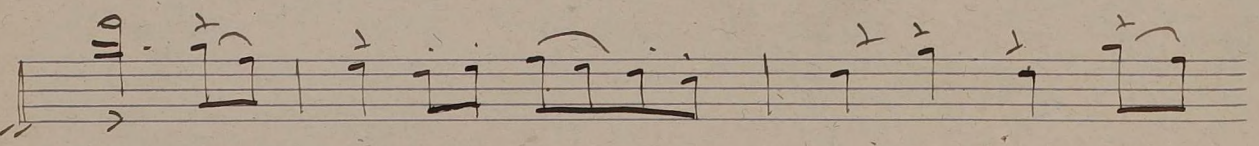
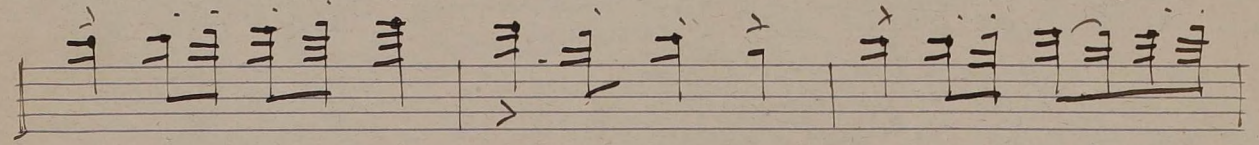
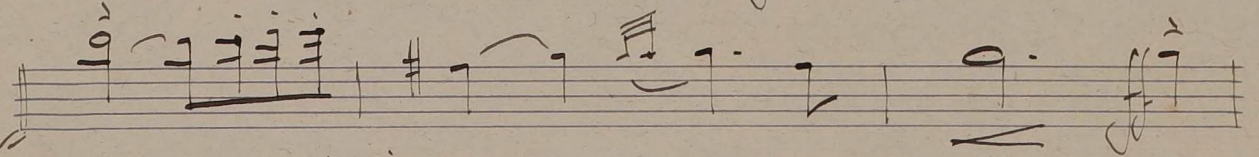
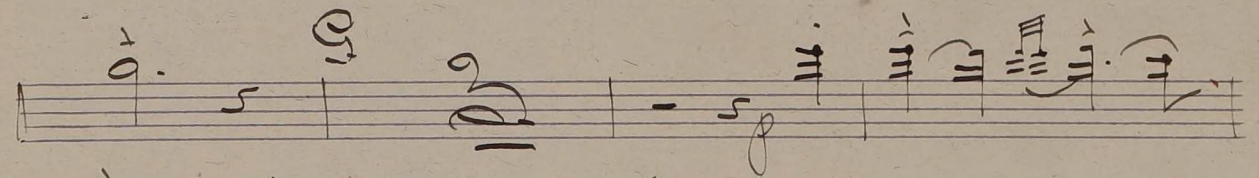
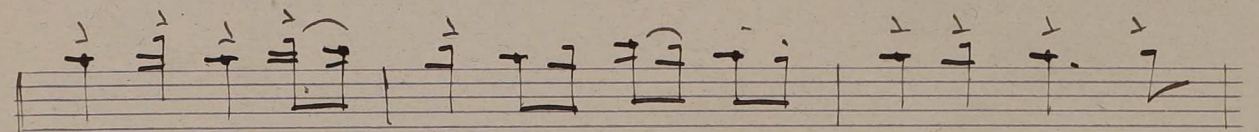
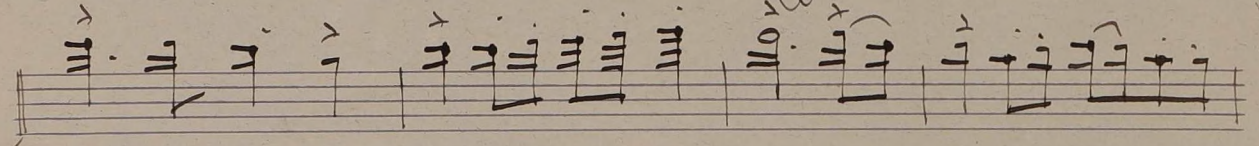
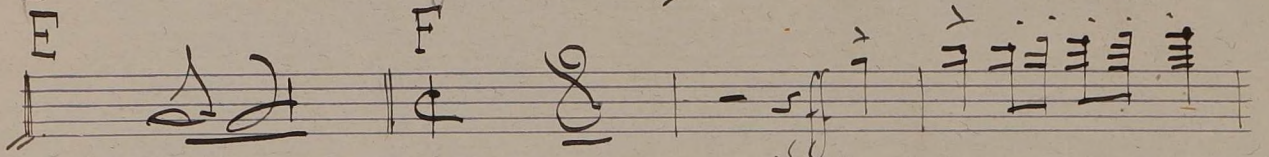
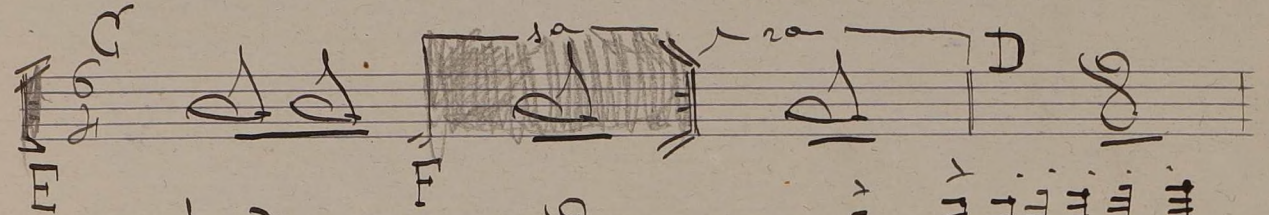
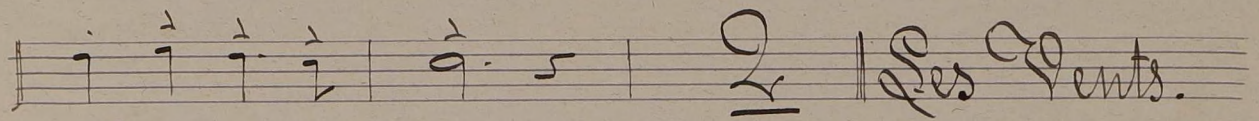
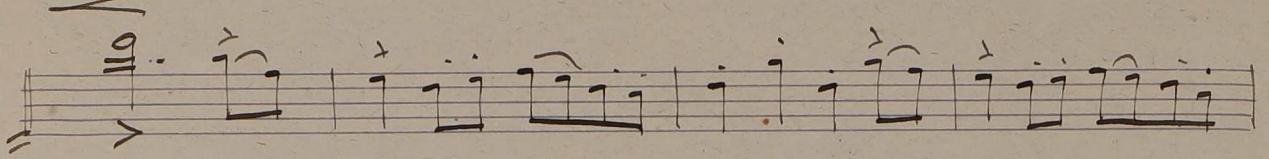
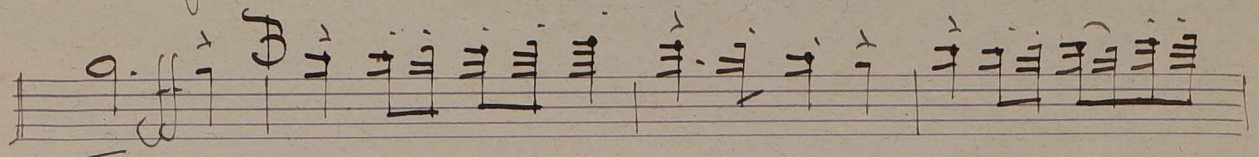
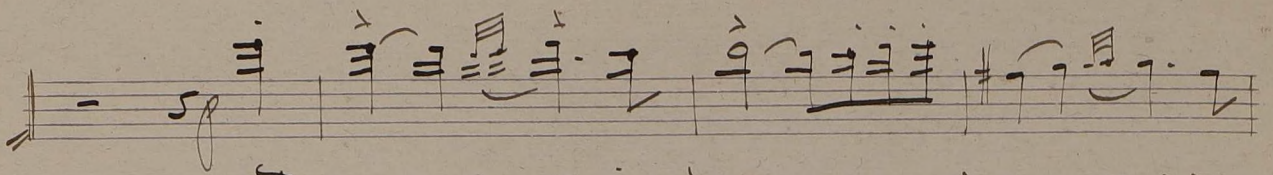
B

Handwritten musical score for a section labeled "B". It consists of five staves. The first staff has a treble clef and a key signature of one flat. The second staff has a bass clef. The music includes various notes, rests, and dynamic markings such as "pp", "p", "f", and "dim". There are also some handwritten annotations like "sal" and "tr" above notes. The section ends with a double bar line and a large scribble.

No. 3. Minuetto.

Gracioso 18:30

Handwritten musical score for a section labeled "Gracioso". It consists of six staves. The first staff has a treble clef and a key signature of one flat. The music includes various notes, rests, and dynamic markings such as "pp", "p", "f", and "tr". There are also some handwritten annotations like "A" and "B" above notes. The section ends with a double bar line and a large scribble.



A handwritten musical score consisting of six staves. The notation includes various rhythmic values such as eighth and sixteenth notes, rests, and dynamic markings like accents (>) and slurs. The first staff begins with a treble clef and a key signature of one sharp (F#). The second staff contains several whole notes, some with a sharp sign (#). The third staff features a complex rhythmic pattern with many sixteenth notes. The fourth staff includes a measure with a sharp sign (#) and a slur. The fifth staff continues with rhythmic notation. The sixth staff concludes with a double bar line, a fermata over a note, and a large, stylized signature or flourish.

Seven blank musical staves, each consisting of five horizontal lines, arranged vertically below the first section of the page.