

Clarinete 2º

Variaciones de 189



E. Elgar.

Enigma. (En sib.)

Andante $\text{♩} = 120$

Sim molto
pp
ten
1
Sim
allarg

riten pp
ataca

nº 8.

2 *atpso*
ppp

3
Sim 3

3
pp
Sim
p cres

4
pp
al 8.

(no) No 2.

Handwritten musical score for No. 2, consisting of four staves. The first staff is in treble clef with a key signature of one sharp (F#) and a 3/8 time signature. It begins with a blue number '5' and contains a series of chords and melodic lines. The second staff is in bass clef, starting with a blue number '6' and featuring a *mf* dynamic marking. The third staff is in bass clef, starting with a blue number '7' and a *p* dynamic marking. The fourth staff is in bass clef and concludes with a *pp* dynamic marking.

No 3.

Handwritten musical score for No. 3, consisting of six staves. The first staff is in treble clef with a key signature of two sharps (F# and C#) and a 3/8 time signature, marked with a blue number '8' and the tempo *allegretto*. The second staff is in bass clef, marked with a blue number '9' and includes dynamics *sim* and *cres-*. The third and fourth staves are in bass clef and feature triplets, with the third staff marked *mf* and *cres*. The fifth staff is in bass clef, marked with a blue number '10' and *p*. The sixth staff is in bass clef, marked *sim*, and includes first and second endings labeled '1a' and '2a'.

No. 4.

11 *allegro molto.*

simile

Handwritten musical score for No. 4, measures 11-14. The score is written on five staves. Measure 11 is marked "allegro molto." and "simile". Measure 12 has a blue "12" above it. Measure 13 has a blue "13" and "mf" below it. Measure 14 has a blue "14" and "simile" below it. The piece ends with a double bar line and a blue "Vol 19" written to the right. There are "ten" markings under the first two staves.

(No)

No. 5.

15 *Moderato.*

Handwritten musical score for No. 5, measures 15-18. The score is written on four staves. Measure 15 is marked "Moderato." and has a blue "15" above it. Measure 16 has a blue "16" above it. Measure 17 has a blue "17" above it. Measure 18 has a blue "18" above it. The piece ends with a double bar line and the word "tataca." written to the right.

No 6.

Andantino 3/2 ff *dim*

19

20

21

22

No 7. (Troyte)

Presto 2/4 ff *dim*

23

24

25

26

cres

clar.

Handwritten musical score for Clarinet, measures 27-33. The score is written on five staves. Measure 27 is marked with *cres-*. Measure 28 is marked with *cres* and *f*. Measure 29 is marked with *f*. Measure 30 is marked with *dim*. Measure 31 is marked with *dim*. Measure 32 is marked with *dim*. Measure 33 is marked with *rit*. The key signature is one sharp (F#) and the time signature is 6/8.

(no) No 8. (w.r.)

Handwritten musical score for Clarinet, measures 30-33. The score is written on five staves. Measure 30 is marked with *Allegretto* and *8p*. Measure 31 is marked with *cres-*. Measure 32 is marked with *p*, *cres*, and *f*. Measure 33 is marked with *dim*, *trun*, *dim*, and *riton*. The key signature is one sharp (F#) and the time signature is 6/8.

Handwritten musical score for Clarinet, measures 34-35. The score is written on two staves. Measure 34 is marked with *rit*. Measure 35 is marked with *rit*. The key signature is one sharp (F#) and the time signature is 6/8.

No. 9. (Nimrod)

Adagio $\text{♩} = \frac{3}{4}$

33 ♩ 34

cres-

mf

dim

35

cres-

36

f *legatissimo*

cres

37

dim

Handwritten musical score for No. 9 (Nimrod). The score is written on five staves. The first staff begins with the tempo 'Adagio' and the time signature '3/4'. It features a melodic line with various dynamics including 'mf', 'dim', and 'cres-'. Measure numbers 33, 34, 35, 36, and 37 are written in blue ink above the staff. The piece concludes with a double bar line.

No. 10. Intermezzo. (Dorabella)

Allegretto $\text{♩} = \frac{3}{4}$

38

pp

simile

39

pp

cres-

simile

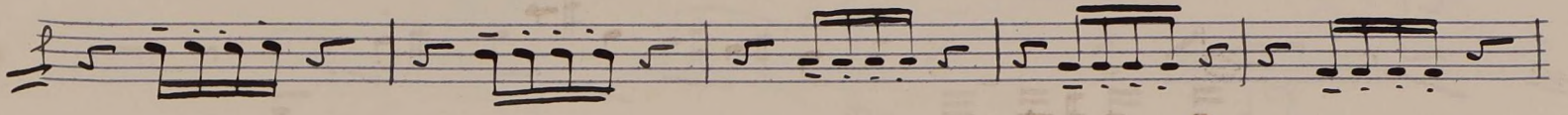
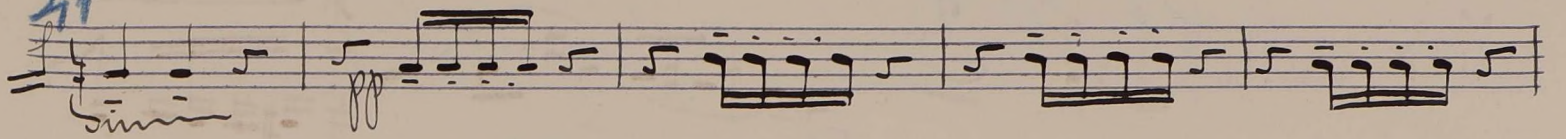
dim *dim* *ppp*

Handwritten musical score for No. 10 (Intermezzo). The score is written on four staves. The first staff begins with the tempo 'Allegretto' and the time signature '3/4'. It features a rhythmic melody with dynamics such as 'pp', 'simile', 'cres-', 'dim', and 'ppp'. Measure numbers 38 and 39 are written in blue ink above the staff. The piece concludes with a double bar line.

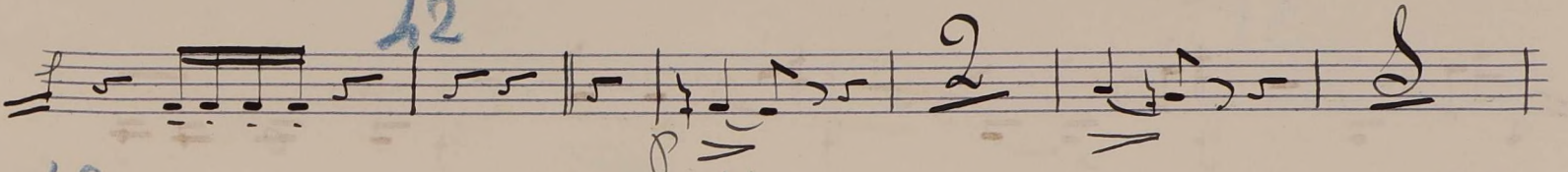
40 *molto cres*



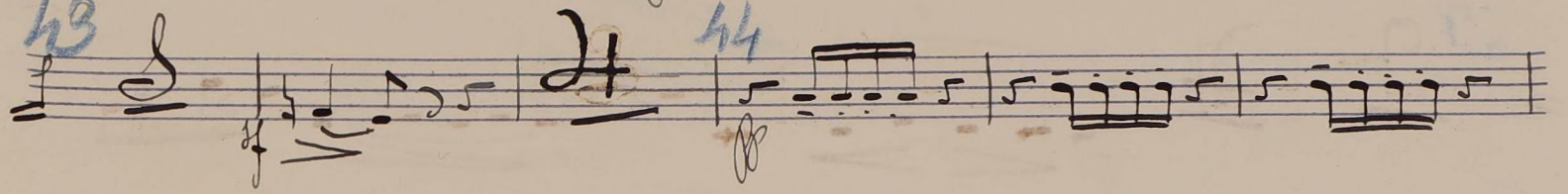
41



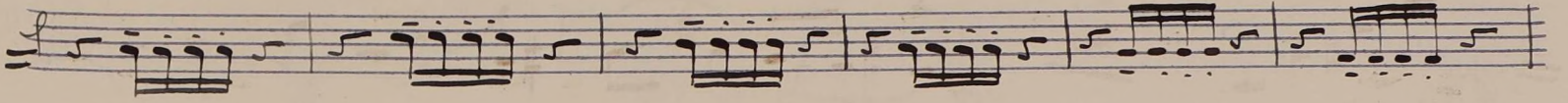
42



43

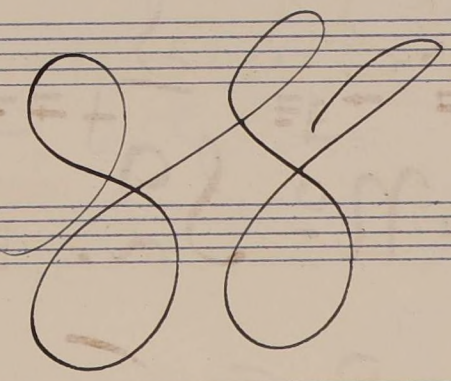
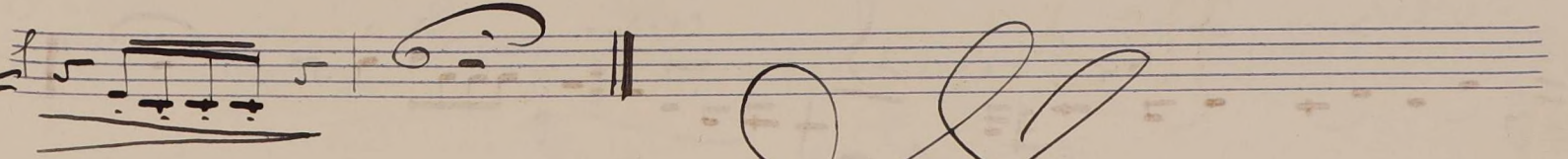
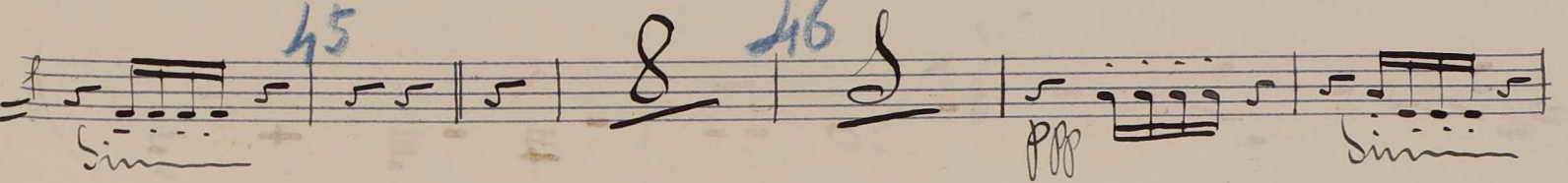


44



45

46



(760) No 81. (G.R.S.)

Handwritten musical score for No. 81. The tempo is marked "Allegro molto" and the time signature is 2/2. The score consists of six staves of music. Measure numbers 47, 48, 49, 50, and 51 are written in blue ink above the staves. The key signature has one sharp (F#). The music features various rhythmic patterns, including eighth and sixteenth notes, and rests. A "cres." (crescendo) marking is present in the fourth and sixth staves.

No 82. (B.G.R.)

Handwritten musical score for No. 82. The tempo is marked "Andante" and the time signature is 2/4. The score consists of three staves of music. Measure numbers 52, 53, and 54 are written in blue ink above the staves. The key signature has one sharp (F#). The music features a mix of eighth and sixteenth notes, with some rests. A "dim." (diminuendo) marking is present in the second and third staves.

largamente

ataca.

No. 33.

Moderato

55 56 57 58 59

cres

No. 34. Final

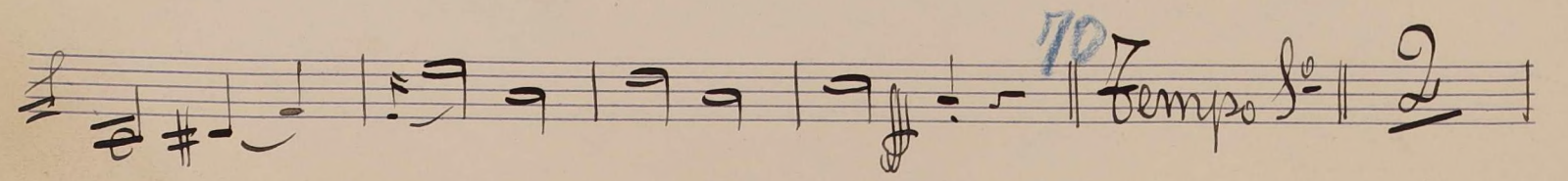
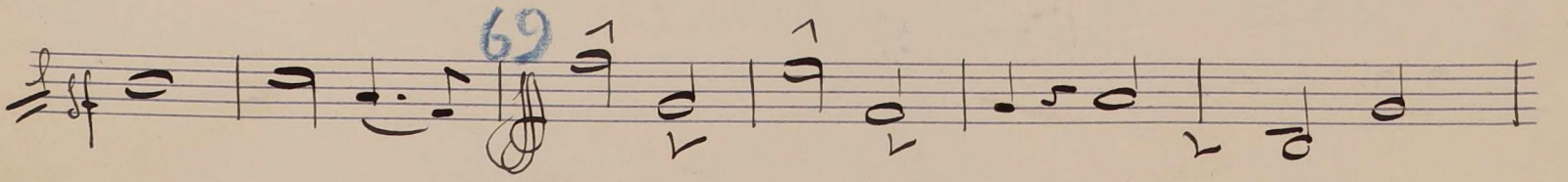
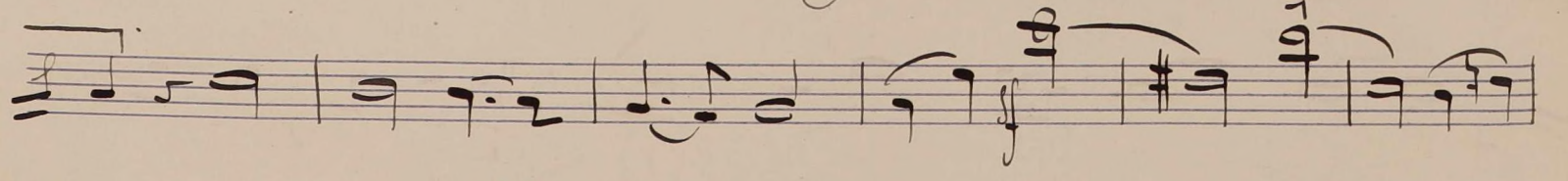
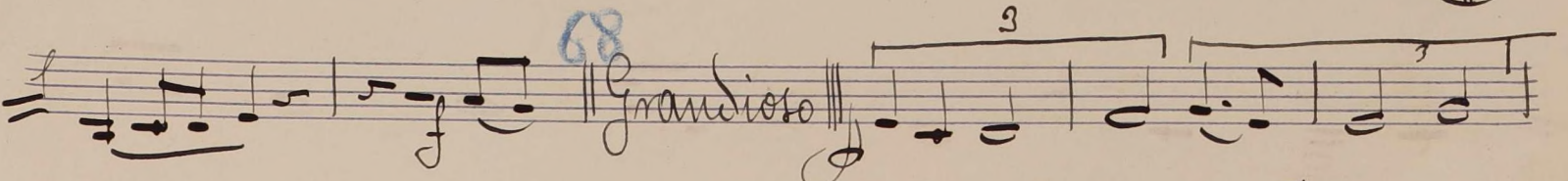
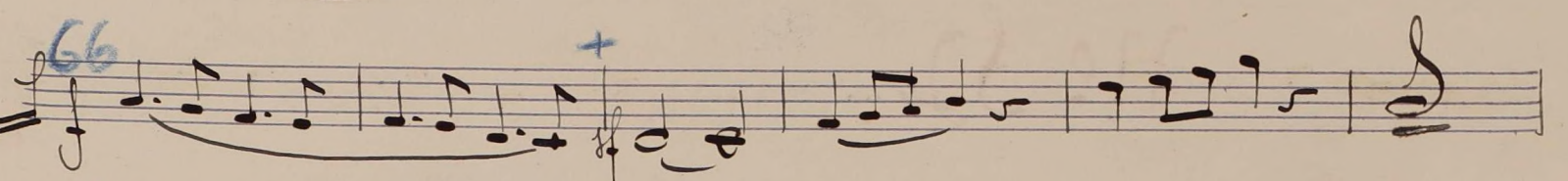
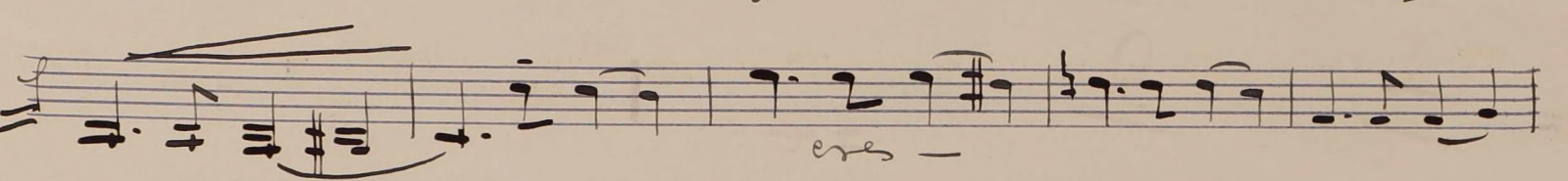
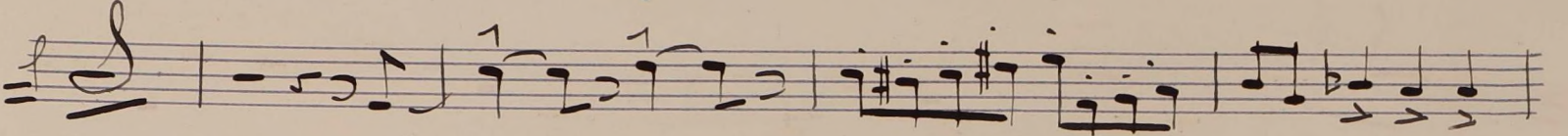
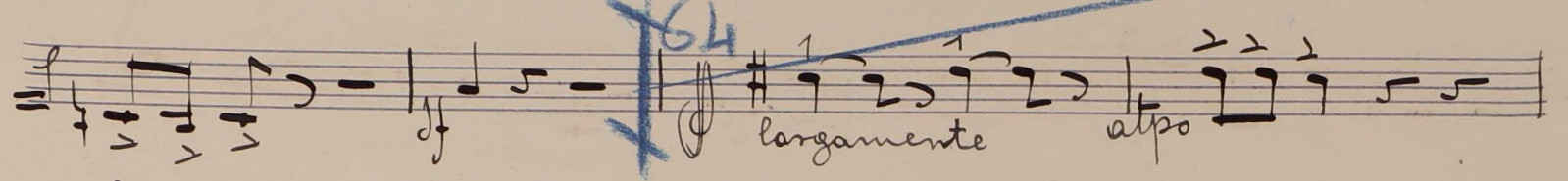
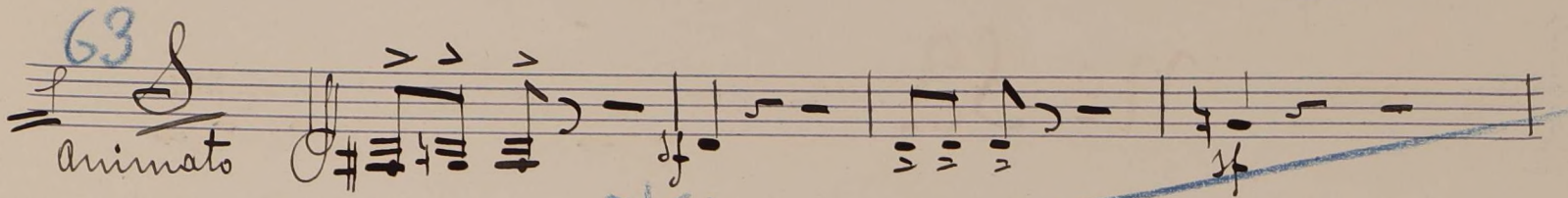
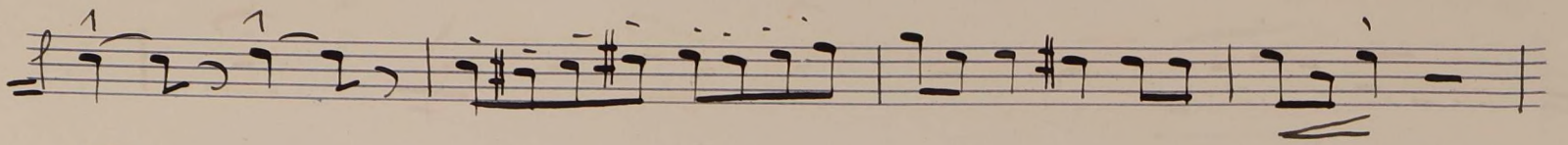
allegro

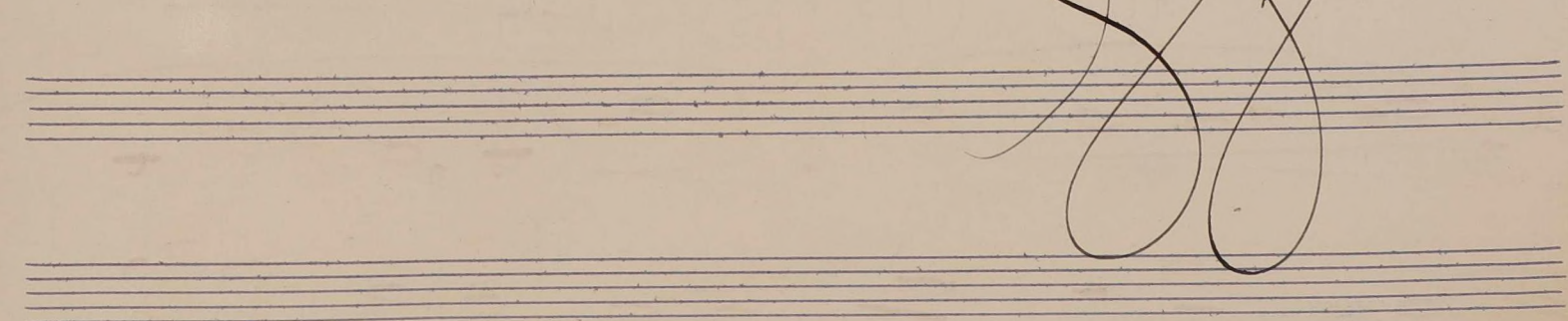
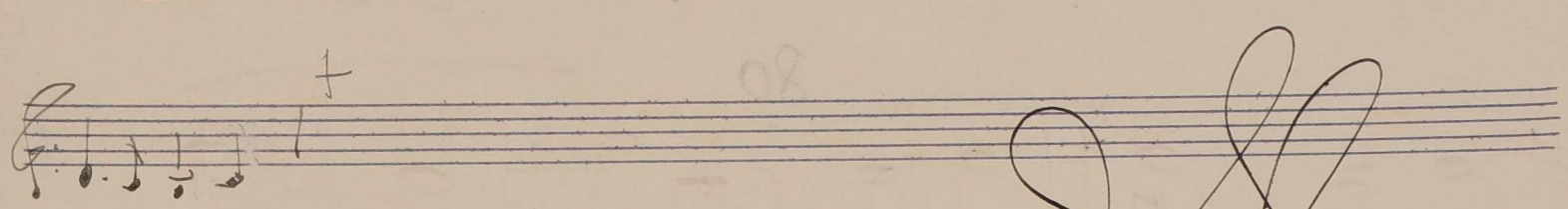
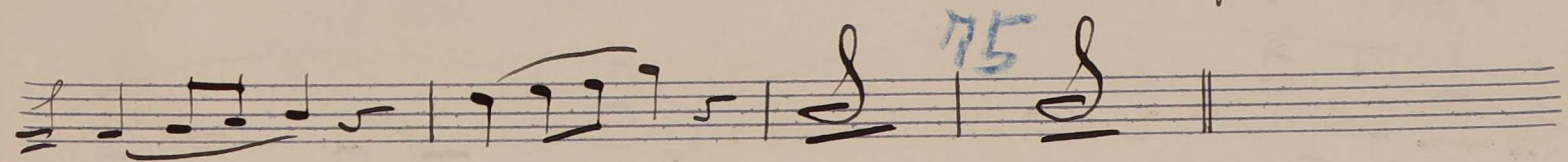
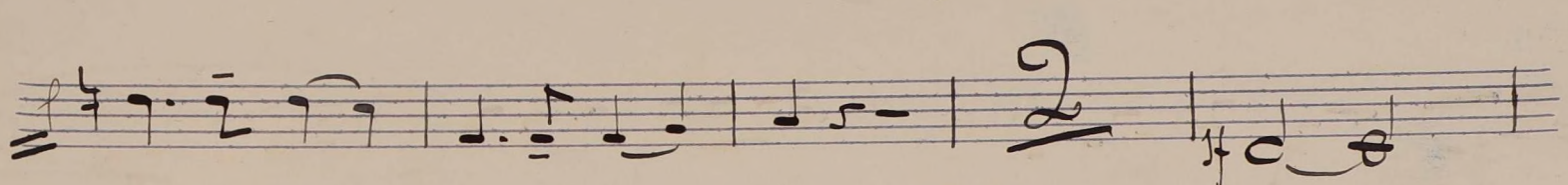
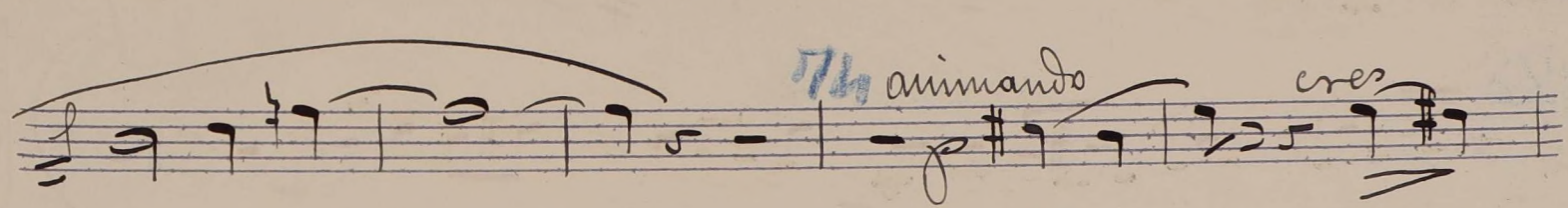
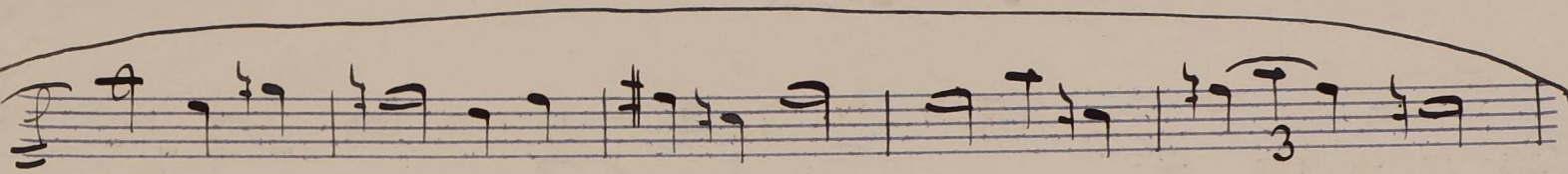
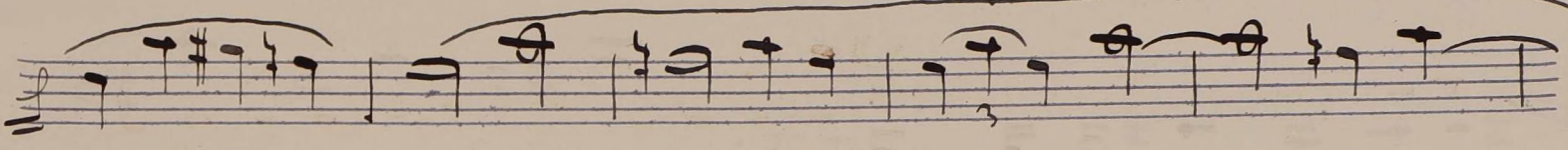
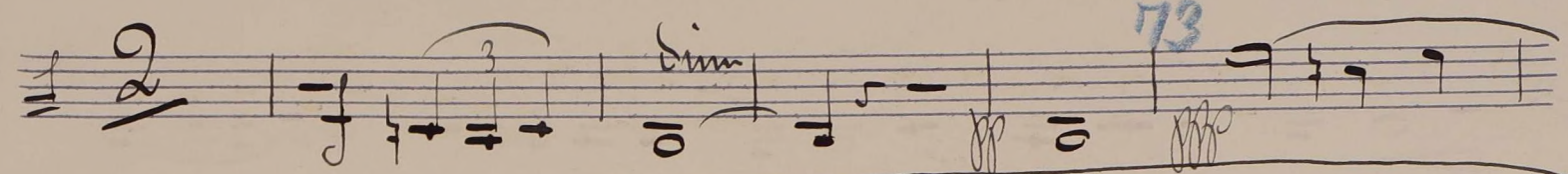
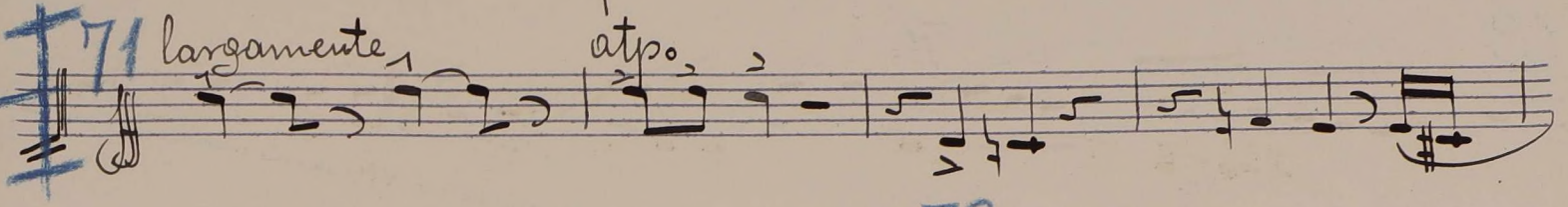
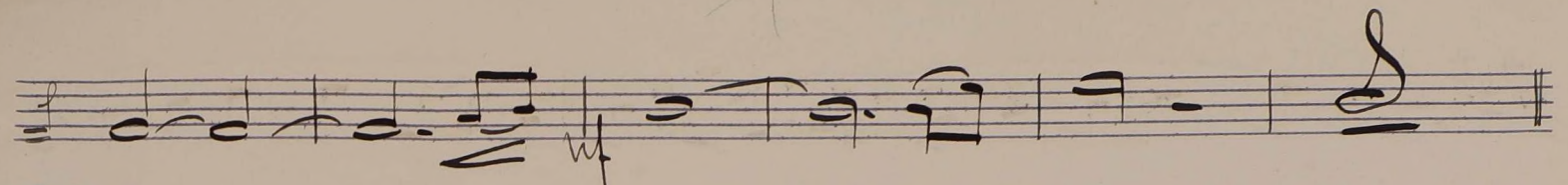
60

cres

61

largamente.





cres

Handwritten musical score consisting of seven staves. The first staff begins with a treble clef and a key signature of three sharps (F#, C#, G#). The second staff continues with a treble clef. The third staff has a treble clef. The fourth staff has a treble clef. The fifth staff has a treble clef and contains a sequence of notes with fingerings 1, 2, 3, 4, 5. The sixth staff has a treble clef and contains the text "molto cres-". The seventh staff has a treble clef. There are several instances of heavy black scribbles over parts of the music.

Five empty musical staves, each consisting of five horizontal lines.