

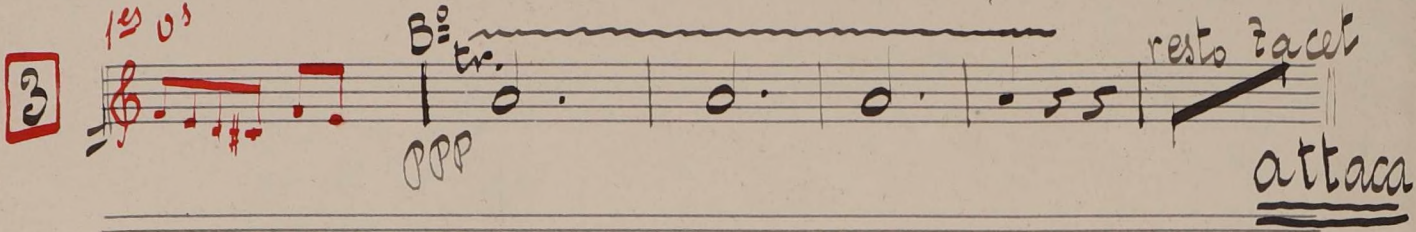
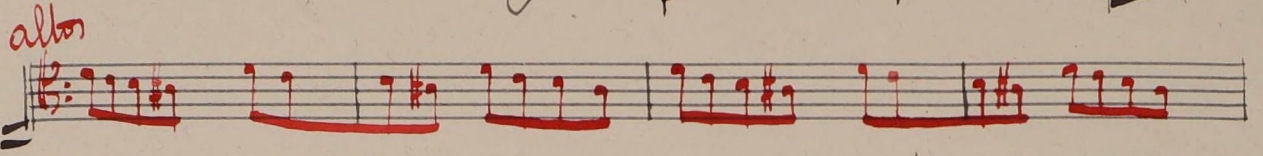
Bombo Platillos y Zam Zam

Rapsodie Espagnole

M. Ravel

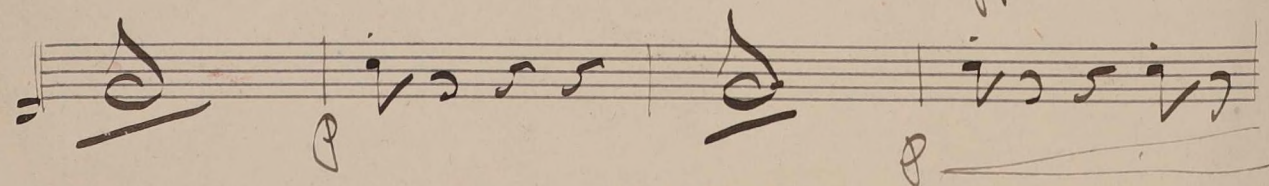
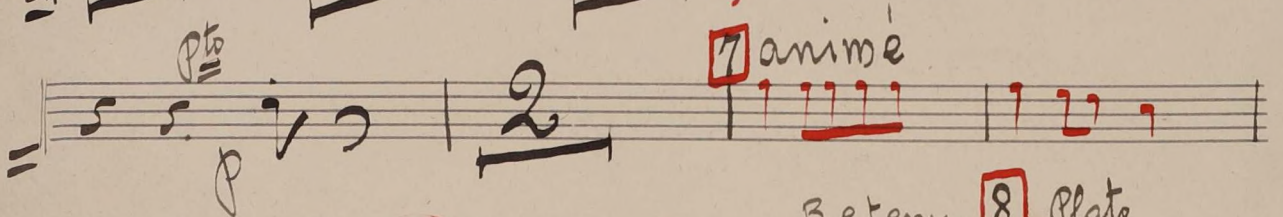
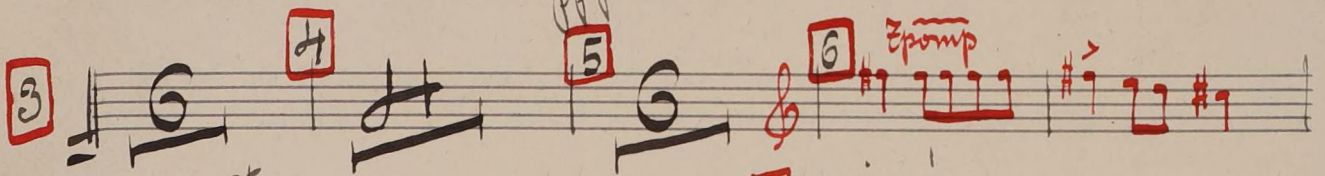
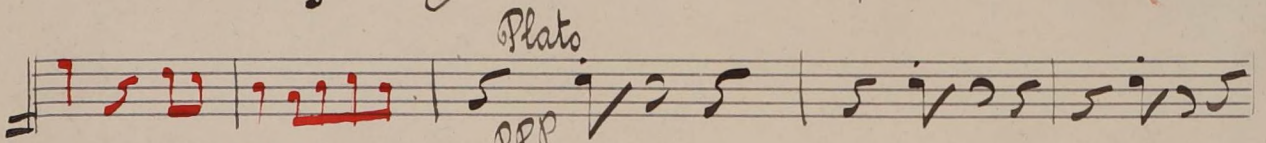
Nº 1 Preludio à la nuit

Tres modere || 3/4 | 7 ¹ | 6 ² | *Epsta*



Nº 2 Malagueña

Asser vif (à 1) || 3/4 | 6 ¹ | 6 ² | *c. d.*



Handwritten musical score for a piano piece, numbered 9 through 15. The notation includes treble and bass clefs, time signatures (6/8, 2/4, 6/8), and various dynamics and performance markings.

- 9**: *amf*, *6*, *Samu*
- 10**: *B^o y pto*, *2*
- 11**: *B^o pto*, *animato*, *B^o pto B^o*
- 12**: *lento Ral*, *6*
- 13**: *10*
- 14**: *1^{er} mouvt.*, *low anime*
- 15**: *cl. p*, *10*, *B^o pp*

N^o 3 Habanera

Handwritten musical score for a piano piece, numbered 1 through 8. The notation includes treble and bass clefs, time signatures (2/4, 6/8, 7/8, 2/4, 4/4), and various dynamics and performance markings.

- 1**: *2*, *6*, *7*, *B^o*
- 2**: *pp*
- 3**: *Baqueta d Zimbal*
- 4**: *5*, *5*, *2*
- 5**: *ppp*
- 6**: *8*
- 7**: *4*
- 8**: *Zamb*

(5)

9 an moue Plato

10

cede

11

Nº 4 FERIA =

1

2

3

4

5

6

7

8

9

10

3^o B^o

4^o Tamb. Xilops

6 B^o y p^{to}

pp

p

mf

B^o

p^{to}

B^o

p^{to}

11 pto. 12 pto. *tr* *res mo sere*

13 14 15 *mas animé*

16 Plato au Mont 17 18 19 Me au debut 20

21 *tr* *mf* *9.* *pto* *pp* 22 *pto* *pp*

23 *tamb.* *pp* 24 *pto* *B^e* *pto* 25 *pto* *pp*

26 *tr* *pp* *vibret.* *3*

27 *con Baqueta de zimbál* *ppp* *1* *2* *3* *4* *5* *6*

28 *B^e* *pto* *6* *8* 29

30 *tr* *B^e* *pto* *2* *B^e* *pto* *animé* 31

32 *ab* *tam tam* *a1* *a3* *pto*

Un peu retenu