



ТАМАРА

138

СИМФОНИЧЕСКАЯ ПОЭМА.

Соч. М. БАЛАКИРЕВА.

TAMBURINO.

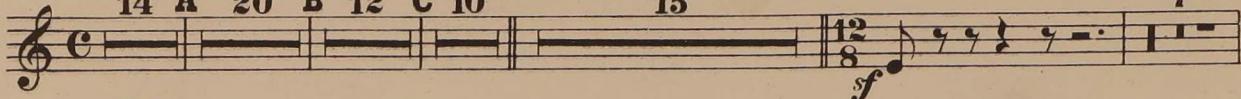
Andante maestoso.

Poco a poco più animato. Allegro moderato ma agitato.

14 A 20 B 12 C 10

15

7



Poco animato. Poco più animato.

D 20

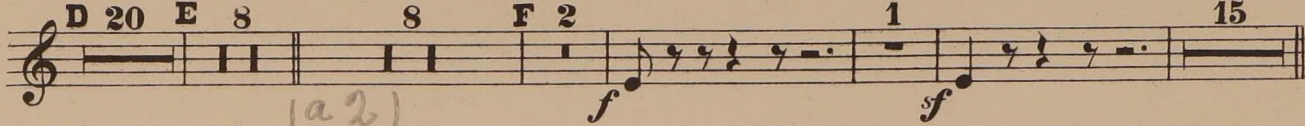
E 8

8

F 2

1

15

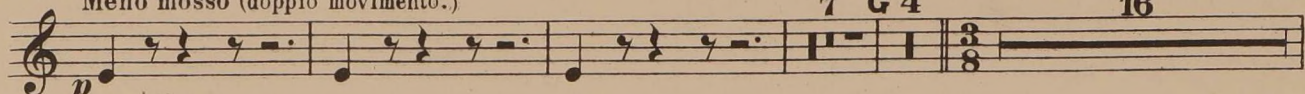


Meno mosso (doppio movimento.)

Allegretto quasi Andantino.

7 G 4

16



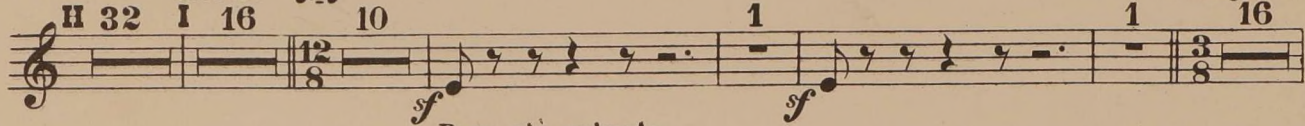
H 32

I 16

10

1

Più agitato. 1 16

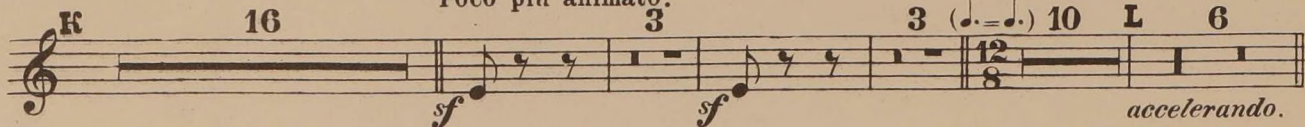


Poco più animato.

3

3 (♩=♩) 10

L 6



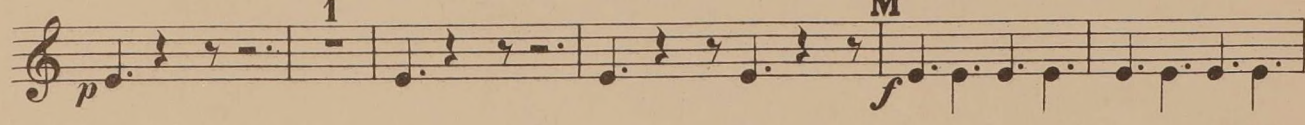
Vivace (alla breve.)

3



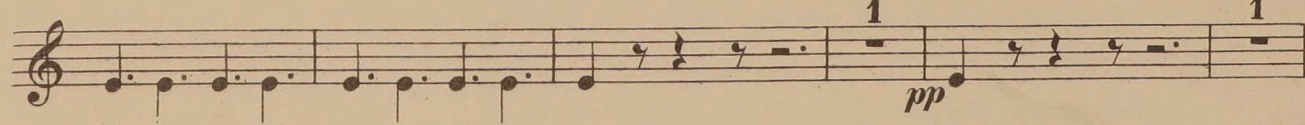
1

M



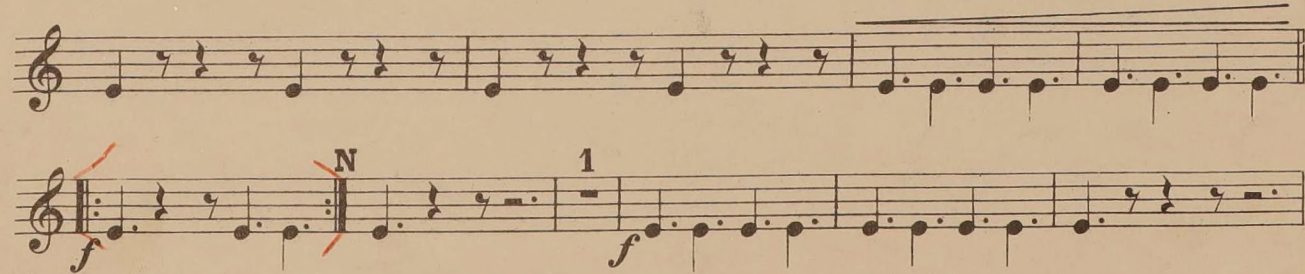
1

1



N

1



TAMBURINO.

Fantasia

1 2 3

Poco meno mosso ma agitato.

4 6 1 4 0 2

riten. *p*

5 2 P 12 Q 8 2

mf

2 R 24 S 7 1

mf *p*

Lo stesso tempo.

6 T 8 W 8

mf

Poco a poco più animato.

X 4 4 3 Y 12 AA 16 BB 16

Cc Animato.

f

Poco più mosso.

5 4 1

(a2) *f*

DD 3

p *f*

Ancora poco più animato.

Meno mosso. Andante

8 10 5 7 19 Ee 16

Fantasia