

1



„ТАМАРА“ 138

СИМФОНИЧЕСКАЯ ПОЭМА.

1

Andante maestoso.

Соч. М. БАЛАКИРЕВА.

Тимпани. *Con sordini.*

BASSO.

(5)

Собственность издателя

5994

П. Юргенсона в Москве.

BASSO.

mf D *pizz.*
p

f *arco*

p pizz.

1

2 3 4 5

6 7 8 *Poco animato.*
E *arco*
f

à 2 *Poco più animato.*
ff

p

F 3 *f*

p *pizz.*
ff

BASSO.

pizz. *mf* 1

1 *mf* *sf* *mf* *sf*

Meno mosso. (doppio movimento.)

G *sf* *p*

Allegretto quasi Andantino.

6 7 H 5

sf *p* *pp* pizz. pizz.

2 1 1 1

Poco più mosso.

5 3 1 1 2 1 2

p *mf* *pp* *p* *mf*

pp *pp* *p*

arco pizz. *sf* *mf*

arco pizz. Più agitato. 3 *sf*

BASSO.

arco *mf* *f* 1 pizz. 1 *p*

arco *mf*

R *sf p*

mf Poco piu animato. *f* 1 12/8

sf f

pizz. *p*

L arco *pp* ce - le - ran - do

p mf

Vivace. (alla breve.) *ff a 2*

sf 3

BASSO.

pizz. **1** **M**
mf *f* *ff*

1 **1**
sf *pp*

mf *arco* *ff sempre*

N **1**
ff

1
fff

f

f

riten. **2** **1** *Poco meno mosso, ma agitato.* *pizz.* *arco*
p

O *pizz.*
sf *p*

sf *sf* *sf* *arco* *f*

P *pizz.*
p

BASSO.

1 2 3

pp

4 5 6 7

8 *Q* 1 2 3

sf sf p

4 5 6 *arco*

sf p

ff *Divisi* *pizz.* *sf*

sf *arco* *ff* *pizz.* *sf* *sf* *arco*

ff *pizz.* *sf* *p* *sf* *p* *R* *arco*

mf *pizz.* *f* *p* *sf* *p* *sf* *2* *2*

p *sf* *sf* *mf* *p* *pp* *S* *sf* *1*

2 3 4 5 6 7

p *sf* *p*

Listesso tempo. 1 2

mf *p*

3 4 5 6

mf

BASSO.

arco *f* *f* *f* **T** pizz. *p*

arco **W** *f*

pizz. **1**

X arco *sf*

pizz. *p*

arco *f* *ff*

y pizz. *p*

AA

BASSO.

pp

pp

2 Pochissimo meno mosso

1

B_B Poco a poco piu animato.

pizz. 1 1 1 1 1 2

arco pp la pp pizz mf

f

C_C Animato.

arco ff

pizz. sf p

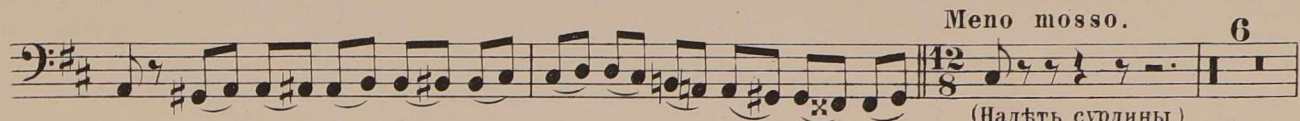
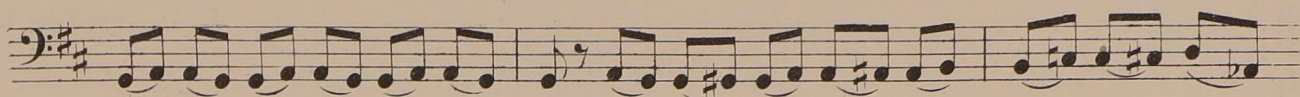
Poco piu mosso.

arco sf fa 2

1 arco pizz. f

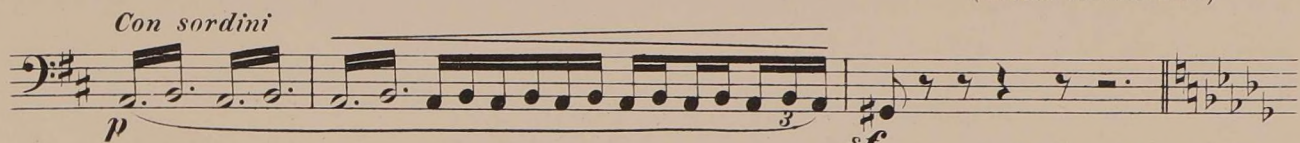
D_D

pizz. 1 arco Ancora poco piu animato. mf f p ff

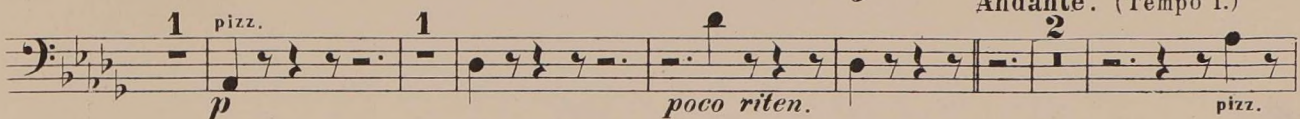


Meno mosso. 6

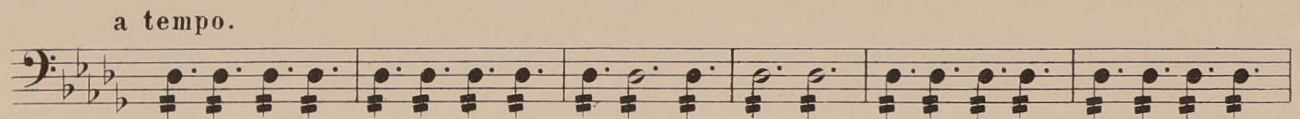
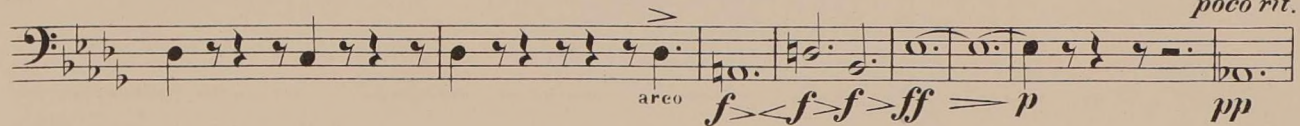
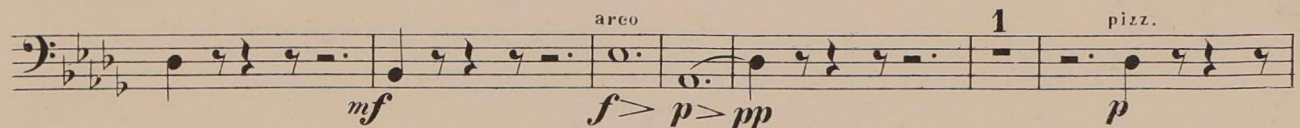
(Надѣть сурдины)
(mettez lessourdines)



Con sordini



Andante. (Tempo I.)



(5)