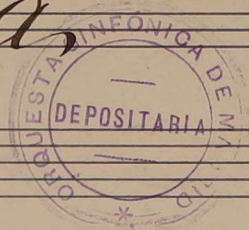


1  
- 112

*Cornetino 2<sup>a</sup>*  
*Cornetino*  
Crompeta 2<sup>a</sup>

*Cleopatra*  
*Cleopatra*  
Cleopatra

*overtura*



Mancinelli



= III B =

Allegro

A

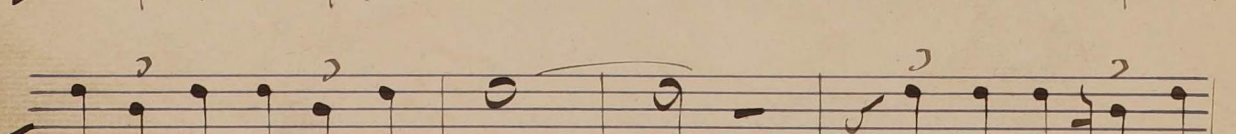
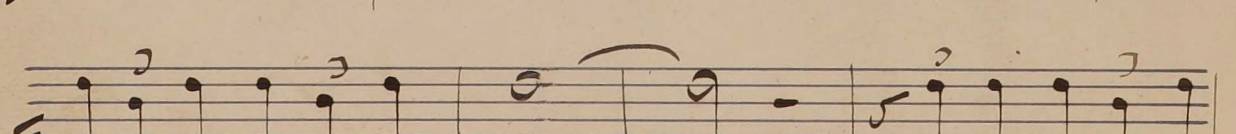
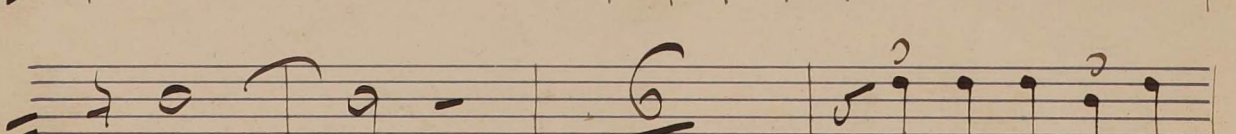
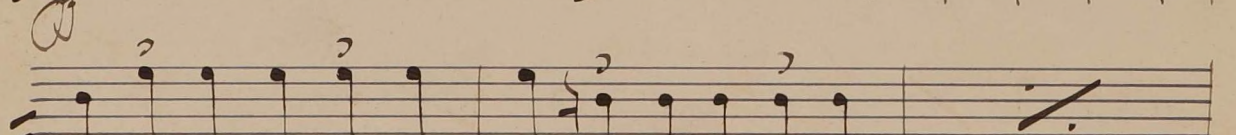
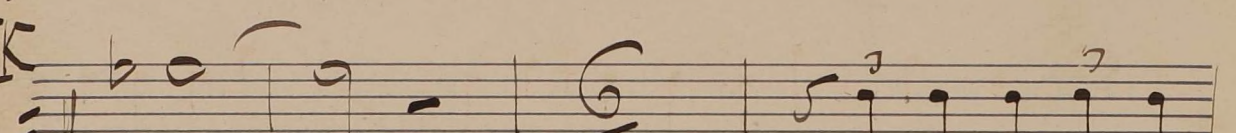
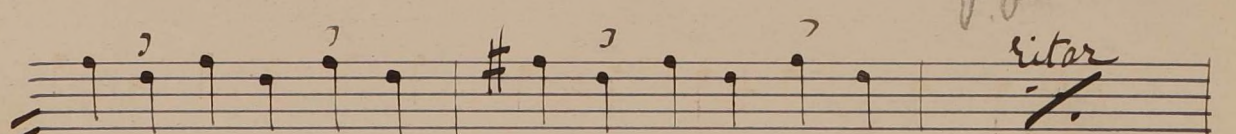
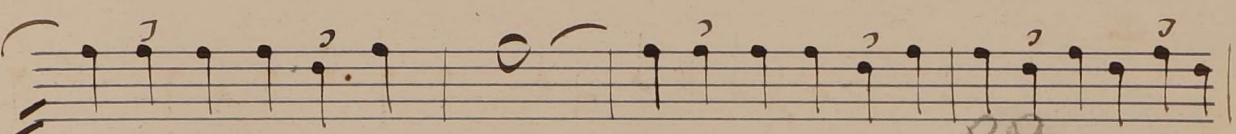
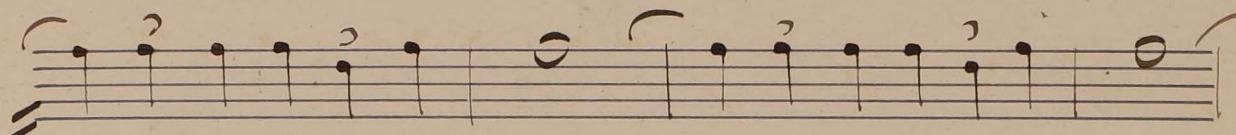
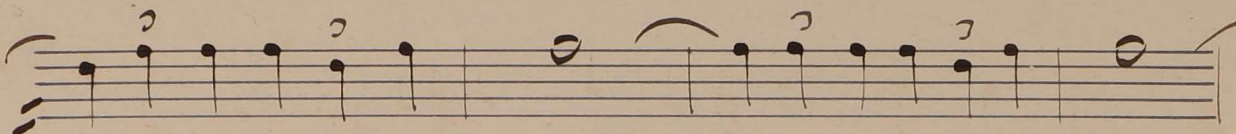
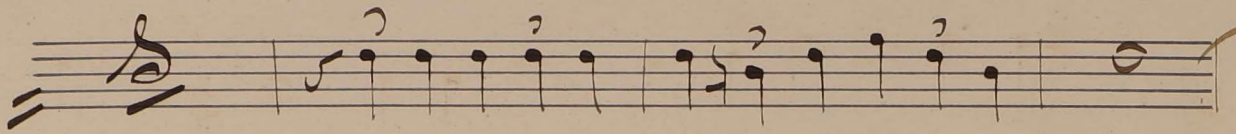
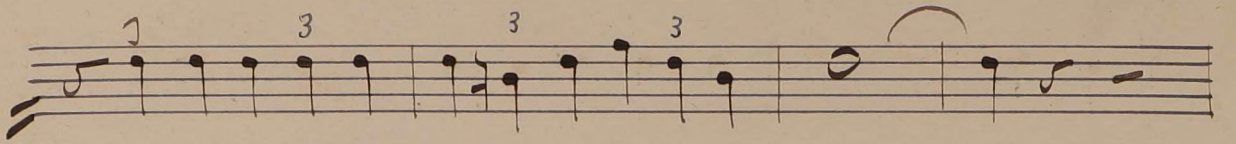
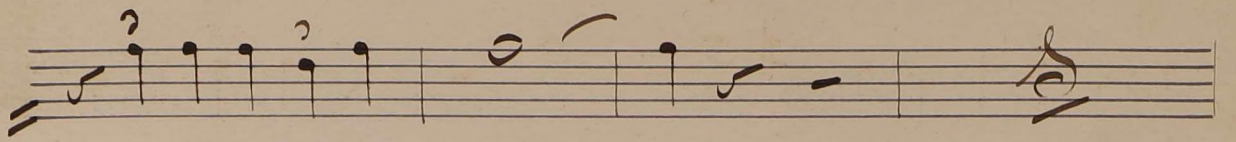
sp



A handwritten musical score on aged paper, consisting of eight staves. The notation includes various note values, rests, and bar lines. The first staff begins with a double bar line and a sharp sign. The second staff has a double bar line and a sharp sign, with the word "dimu" written below it. The third staff has a double bar line. The fourth staff has a double bar line. The fifth staff has a double bar line. The sixth staff has a double bar line and the word "dimu" written above it. The seventh staff contains chord symbols: F, G, H, I, and a double bar line. The eighth staff contains a double bar line. The notation is somewhat stylized and appears to be a draft or a personal manuscript.

*Ste*







A handwritten musical score consisting of ten staves. The notation includes various note values (quarter, eighth, and sixteenth notes), rests, and clefs. The first staff begins with a treble clef and a key signature of one sharp (F#). The second staff features a double bar line with a repeat sign. The third staff continues the melody. The fourth staff includes a double bar line with a repeat sign and a marking 'M' above it. The fifth staff has a key signature change to one flat (Bb) and includes a triplet of eighth notes. The sixth staff continues the melody. The seventh staff has a key signature change to two sharps (D major) and includes a double bar line with a repeat sign. The eighth staff continues the melody. The ninth staff has a key signature change to one flat (Bb) and includes a double bar line with a repeat sign. The tenth staff concludes the piece with a double bar line and a large, decorative flourish. The word 'Fina' is written in cursive below the final staff.

Fina