

1  
Santa *S<sup>a</sup>*

= 112

Criopatra

// *ovatura* //



// Mancinelli //

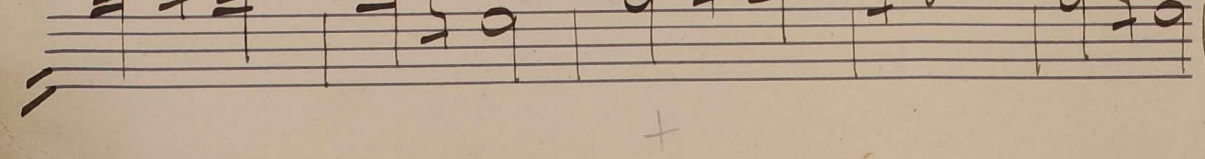
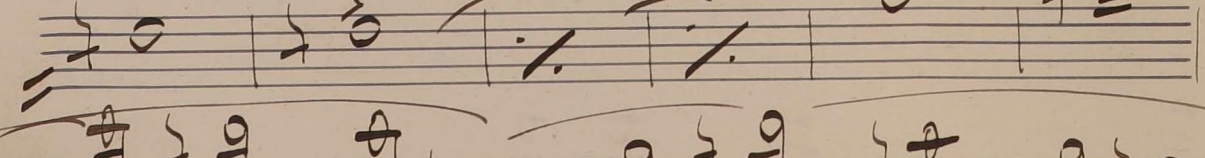
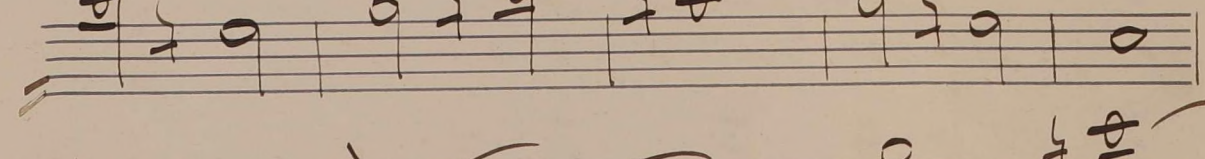
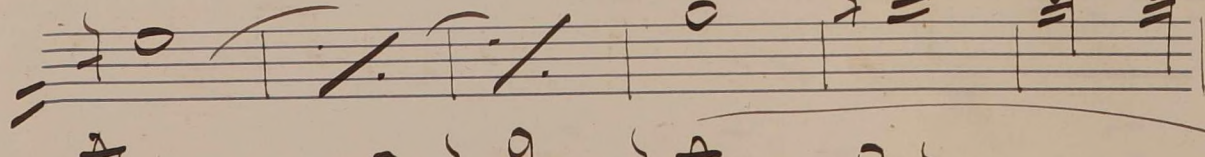
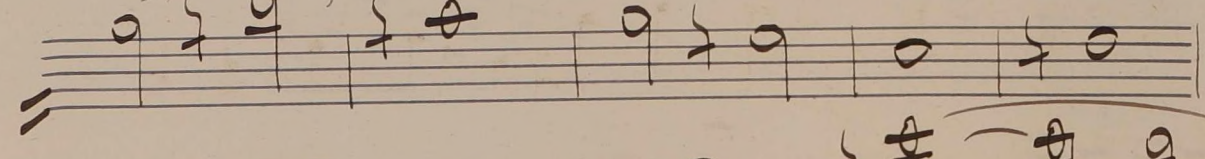
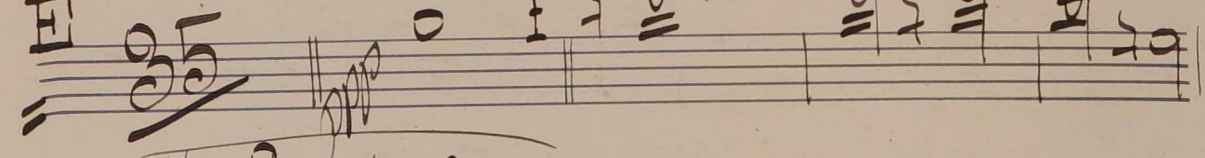
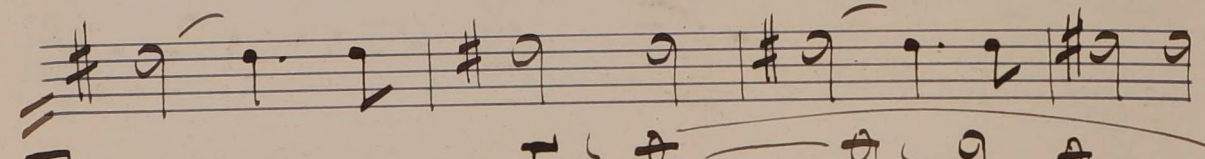
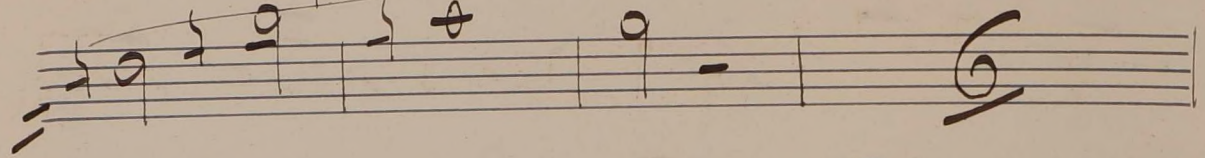
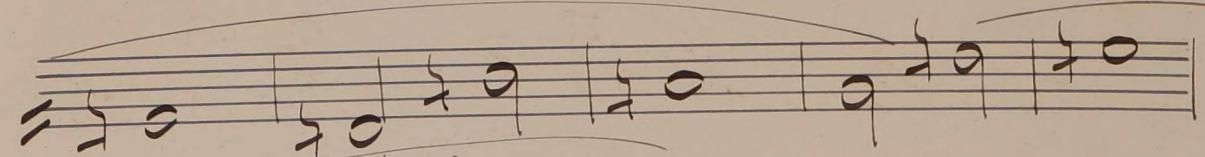
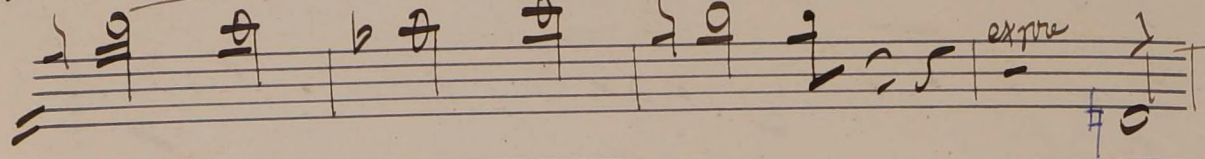
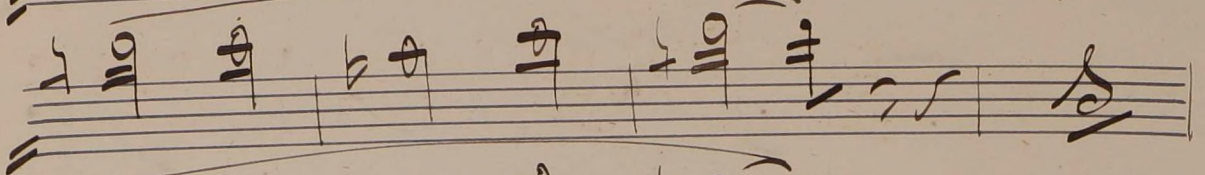
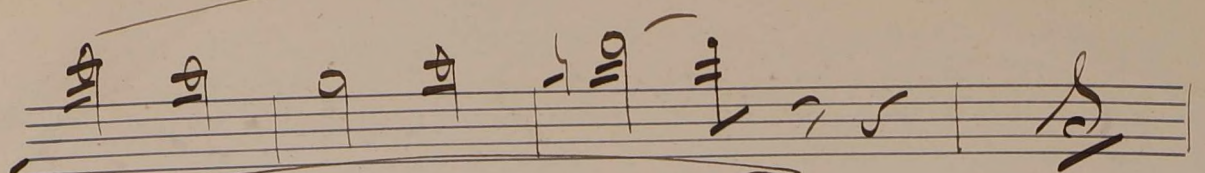






*legato*







Handwritten musical score on ten staves. The notation includes various notes, rests, and clefs. The first staff has a treble clef and a key signature of one sharp (F#). The second staff has a bass clef. The third staff has a treble clef. The fourth staff has a treble clef and a key signature of one sharp. The fifth staff has a treble clef. The sixth staff has a bass clef. The seventh staff has a treble clef. The eighth staff has a treble clef. The ninth staff has a treble clef. The tenth staff has a treble clef and ends with a signature.



Musical staff with notes and rests.

Musical staff with chords and measures 1-6.

Musical staff with chords and measures 8-13.

Musical staff with chords and measures 14-21.

Musical staff with chords and measures 22-27.

Musical staff with chords and notes, marked "rall".

Musical staff with notes, marked "8a".

Musical staff with notes, marked "8a" and "ritar".

Musical staff with notes.

Musical staff with notes, marked "8a" and "stringoso".

Musical staff with notes, marked "8a".

Musical staff with notes, marked "8a".



8<sup>a</sup>

8<sup>a</sup>

8<sup>a</sup>

*Poco*

M

8<sup>a</sup>

8<sup>a</sup>

8<sup>a</sup>

8<sup>a</sup>

8<sup>a</sup>

8<sup>a</sup>

*cruc*

*Dea*

