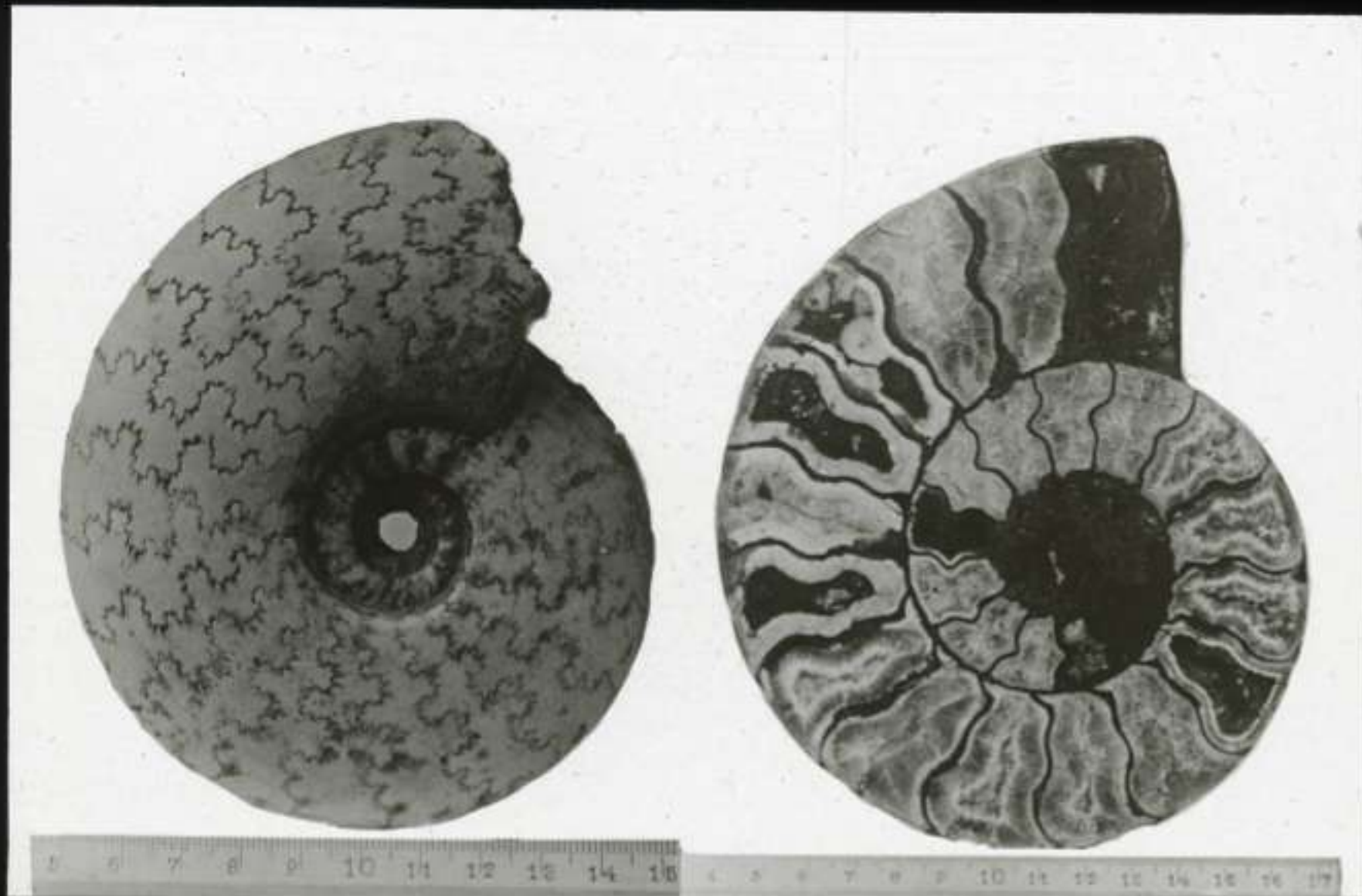
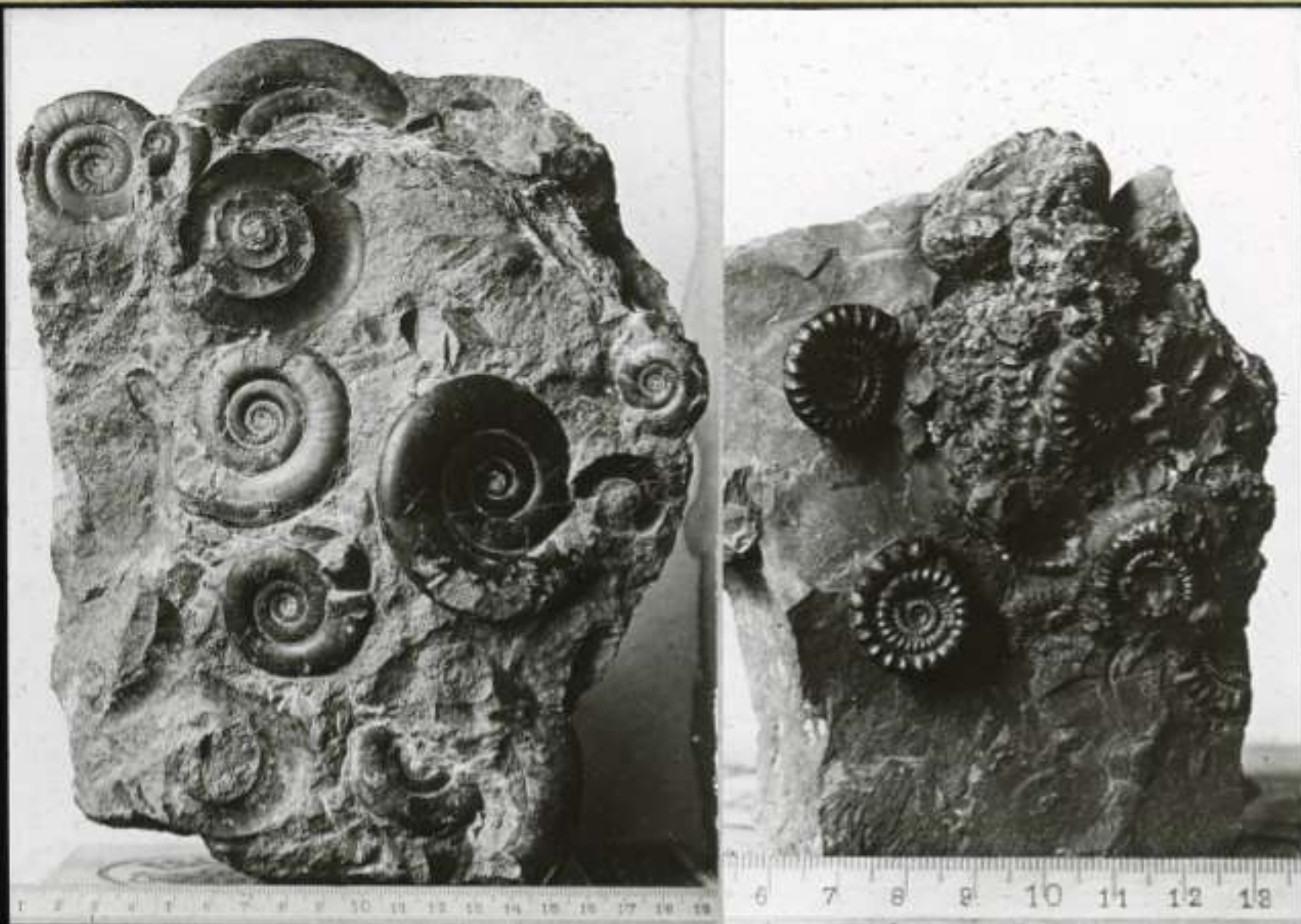


51 *Ludwigia Murchisonae* y corte longitudinal (Jurásico medio β Württemberg)



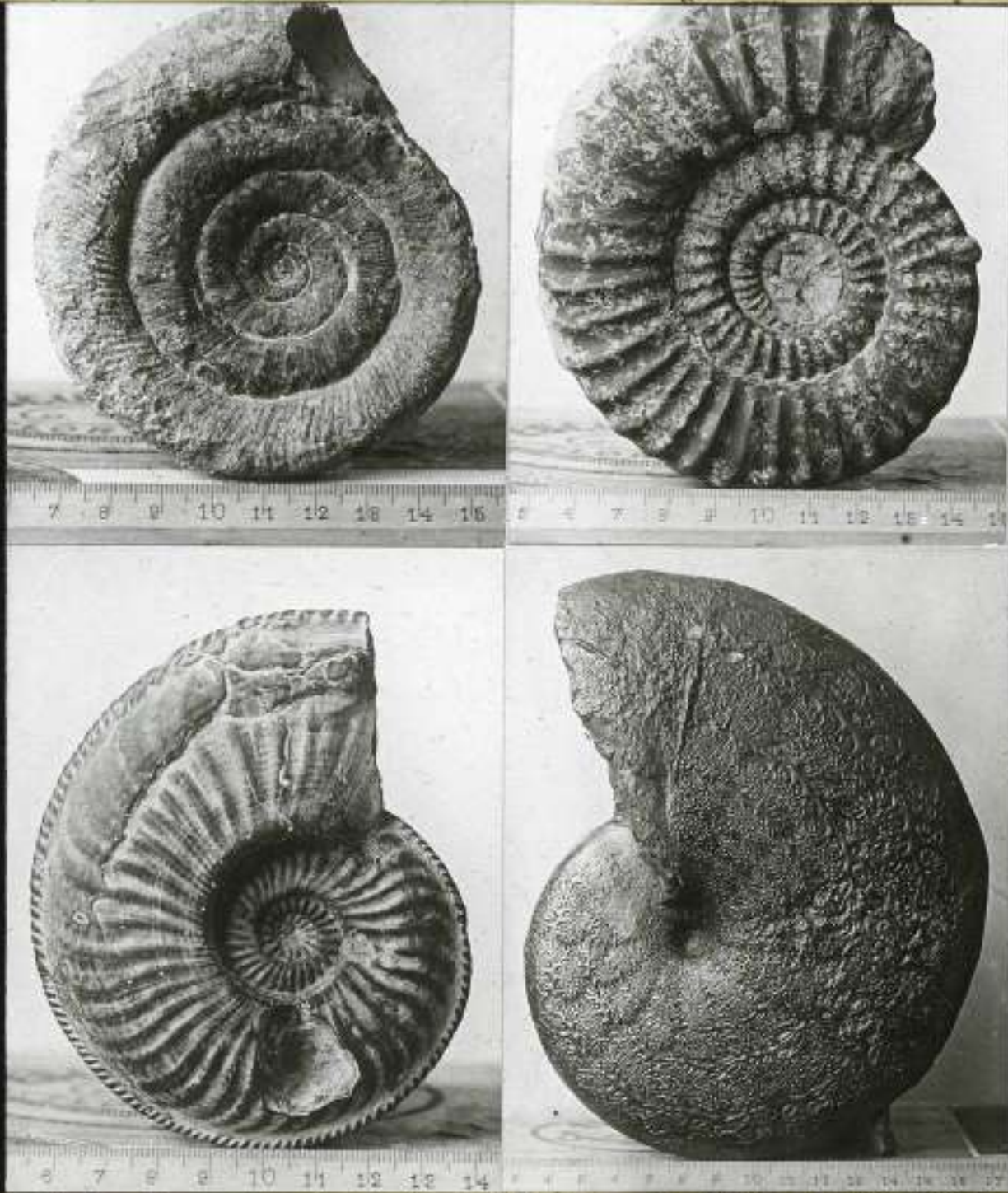
Th. Benzinger / Lichtbilderverlag / Stuttgart

53 Caliza de Psiloceras con *Psiloceras planorbis* (Lias *a*, Württemberg). — Banco de *Ophioceras raricostatum* (Lias *a*, Württemberg)



Th. Benzinger / Lichtbilderverlag / Stuttgart

54 *Microderoceras Davoei* y *Dumortieria Jamesoni*
(Lias γ , Württemberg). — *Amaltheus margari-*



Th. Benzinger / Lichtbilderverlag / Stuttgart

tatus y *Phylloceras zetes* (Lias δ Württemberg)

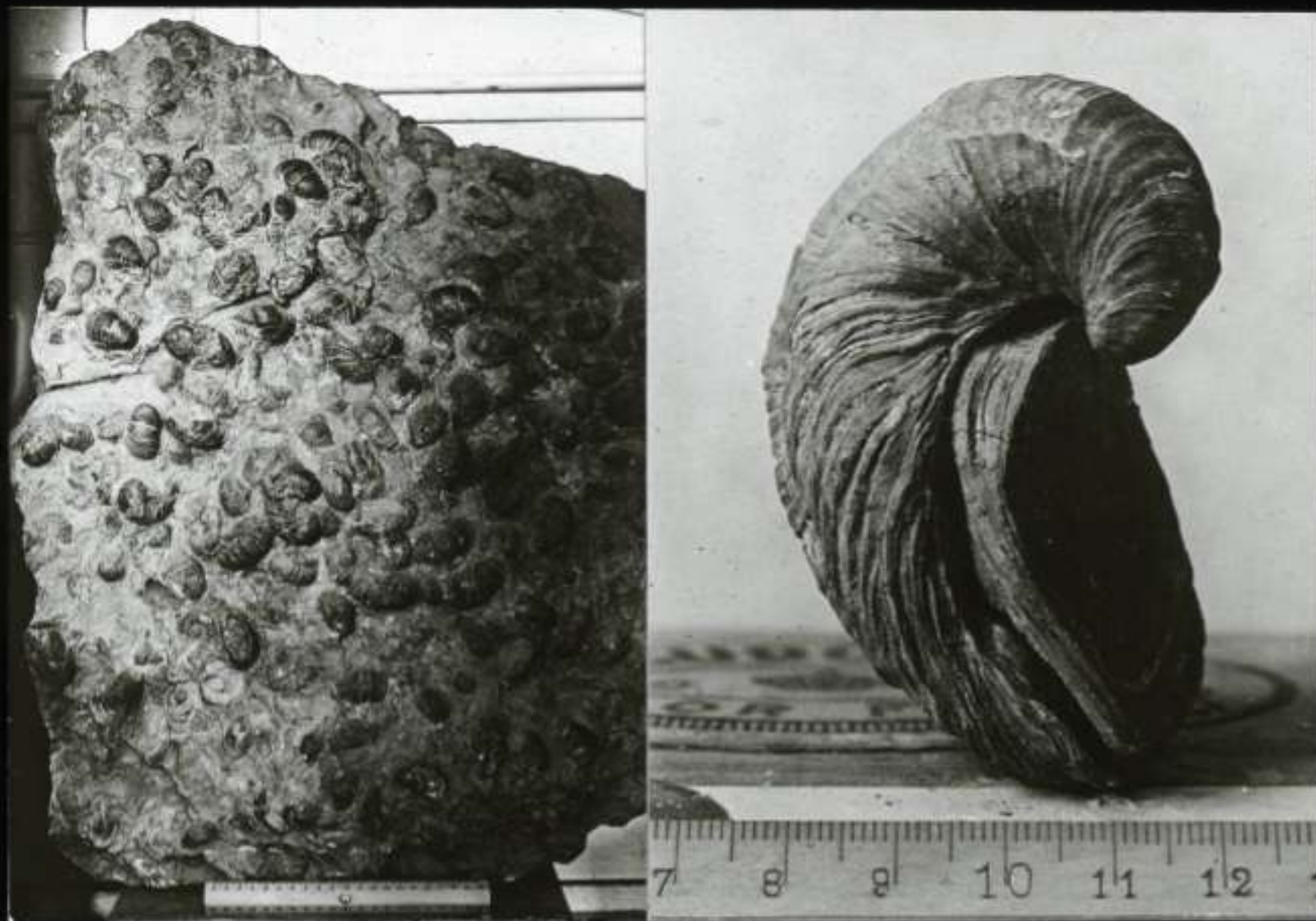
55 *Dactyloceras commune* y *Hildoceras serpentinum*
(Lias ϵ , Württemberg). — *Lytoceras jurense* y



Th. Benzinger / Lichtbilderverlag / Stuttgart

Harpoceras striatulum (Lias ζ , Württemberg)

56 *Gryphaea arcuata* (Lias α . Württemberg)



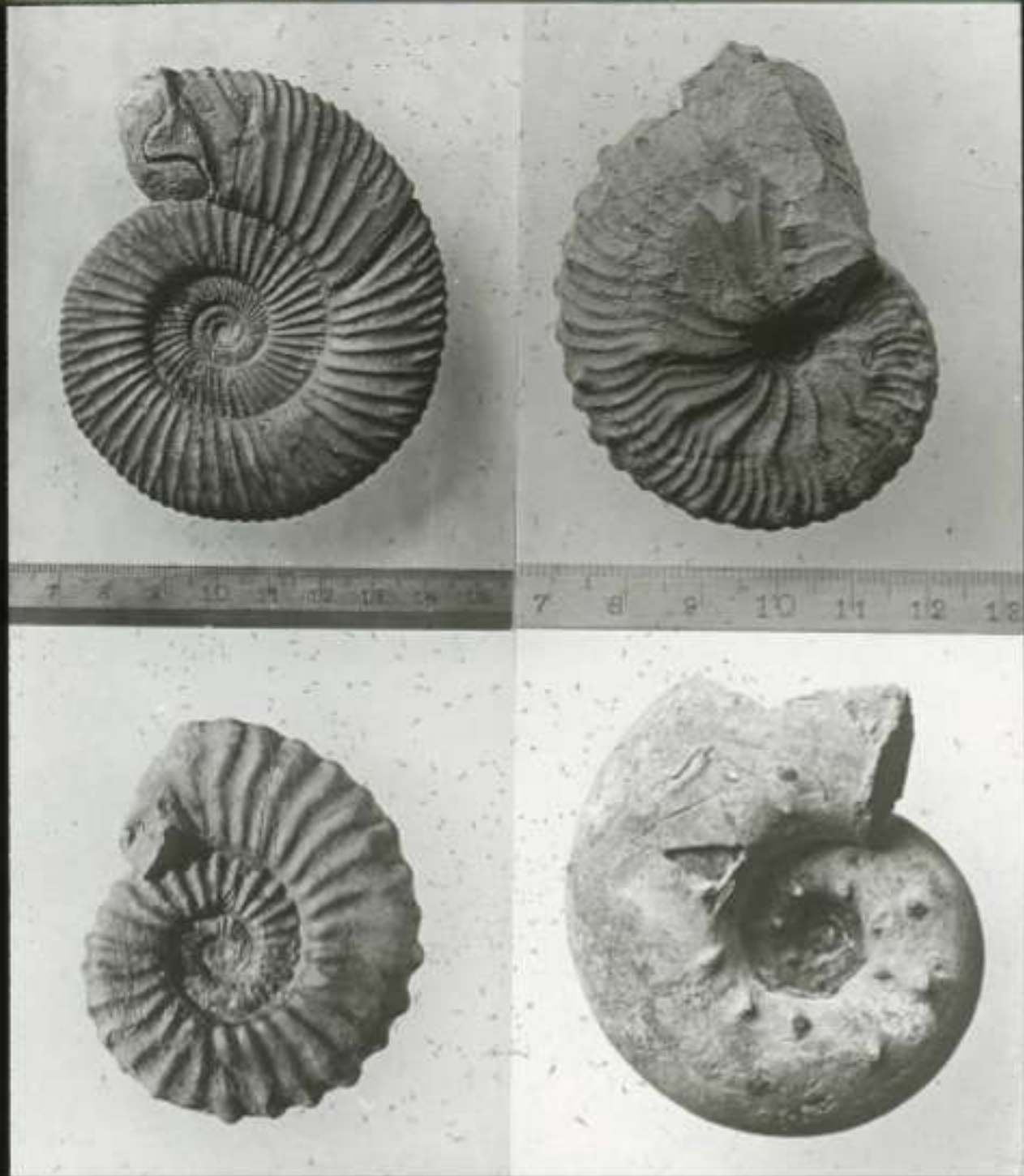
Th. Benzinger / Lichtbilderverlag / Stuttgart

67 *Trigonia clavellata* (*Oolita coraliana*. Coralrag.)
Weymouth, Inglaterra



Th. Benzinger / Lichtbilderverlag / Stuttgart

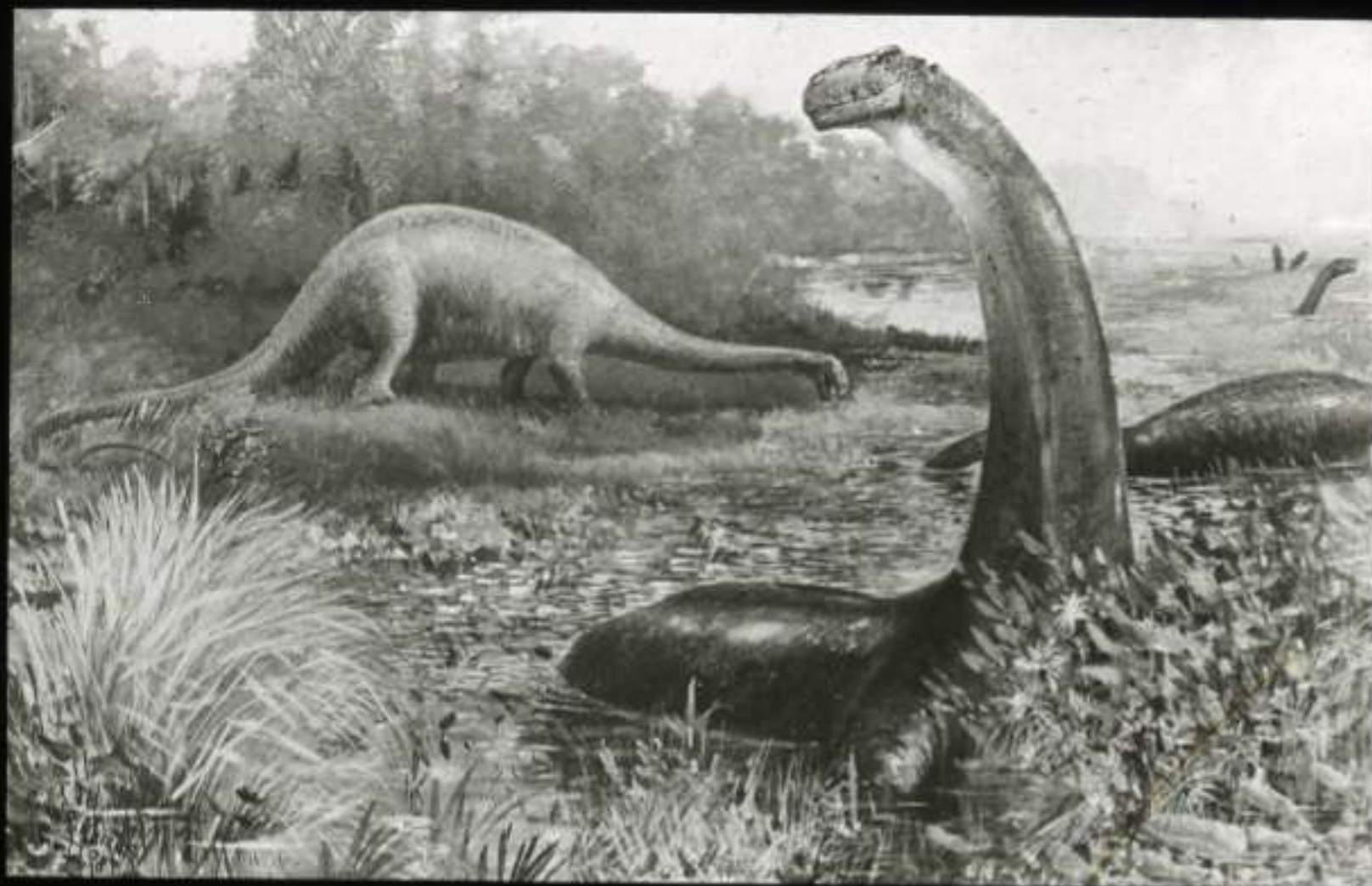
70 Ammonites del Jurásico superior, Württemberg:
Perisphinctes. Lauffenensis. — *Oppelia flexuosa.*



Th. Benzinger / Lichtbilderverlag / Stuttgart

— *Peltoceras bimammatum.* — *Aspidoceras binodum*

81 Brontosaurus excelsus, al fondo Diplodocus longus. Reconstrucción



Th. Benzinger / Lichtbilderverlag / Stuttgart