

21

CAJA.

1955

DANZA Y TRONIO

*SOBRE OBRAS DE BOCHERINI
Y PADRE SOLER. VERSIÓN
SINFÓNICA DE ANTÓN GARCÍA-ABRIL*

SONATA II - TACET

SONATA XI - TACET

SONATA XVI - TACET

CAJA - PANDERETA

THEM NO 21

NOT PLAYED

SONATA - XVI :

All: $\frac{3}{4}$ CAJA

1 16 2 16 3 14

CAJA

PANDERETA

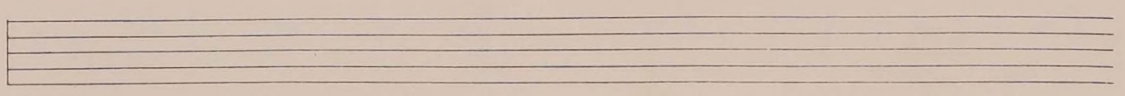
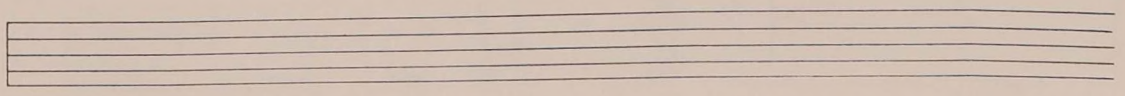
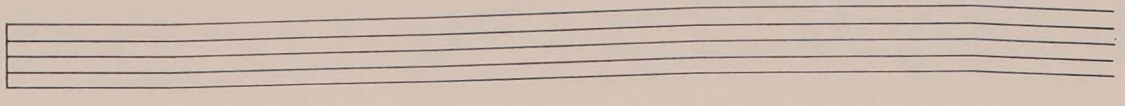
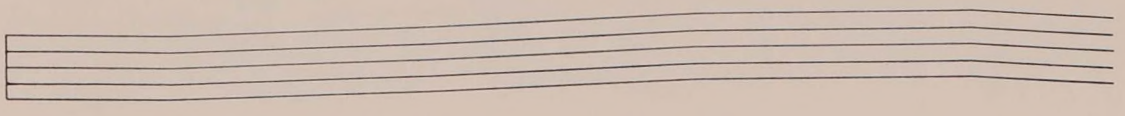
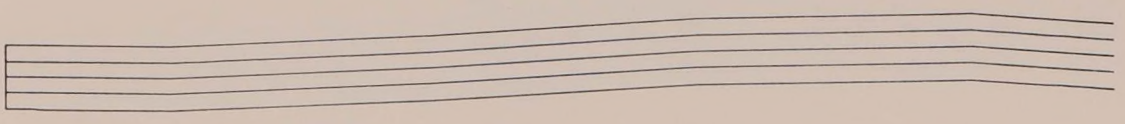
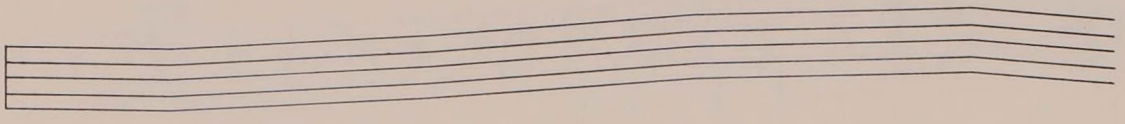
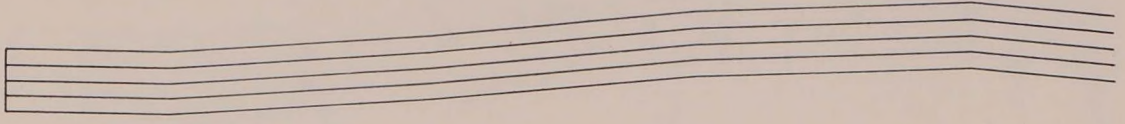
5 P 6 16 7 26

8 PANDERETA

9 13 10

PANDERETA

Handwritten musical notation for 'PANDERETA'. The first staff contains a melody with notes and rests, starting with a dynamic marking 'f'. The second staff contains a bass line with notes and rests, including a double bar line and a sharp sign. A small number '2' is written above the first staff.



21 Romain Tact Kerou.

XXI CAJA.

K-SD

= SONATA - 21 =

6/8 15 ¹ | f . . . | . . . 5 5

f . . . | . . . 5 5 | 2 | f . . .

. . . 5 5 | . . . | . . . 5 5 | 7

² 8 ³ 6 | 5 5 . . . 5 5

5 5 . . . 5 5 | 1 ⁴ 7 ^{m f}

5 5 . . . 5 5 | 5 5 . . . 5 5 | 7

⁵ 2 | 9 . . . | 9 . . . 9 . . . | 9 . . .

7 . . . 9 . . . | 2 ^{mf} | f . . . | . . . 5 5

CAJA.

= INTRODUCCION.

Handwritten musical notation for a drum introduction. The notation is written on four staves. The first three staves show a sequence of time signatures: 3/4, 2/4, 3/4, 2/4, 3/4, 2/4. The fourth staff begins with a 3/4 time signature, followed by a large '6' and a double bar line. Below the staff, there are handwritten notes: 'DC', 'CASA', and 'SD'. The staff continues with a series of rhythmic patterns, including eighth and sixteenth notes, and ends with a double bar line and a fermata.

Panderettes

Cast
tambor.

CAJA

K. as SD.
C. TIME.

FANDANGO

3/4 ~~8~~ (A) 1 1 castañuelas 3
 5 > 7 7 7 7 | p

(B) 5 > 7 7 7 7 | . | . | 7 > 5 5

2 | 7 7 7 | 7 5 5 | 2
 mf

castañ f 7 7 7 | 7 > 5 5 || (C) 3 castañuelas
 mf 7 7 7 7 . . |

2 | 7 > 5 5 | 1 0 p 7 7 1 1
 Timp.

Pandereta 5 > 5 (E) 5 > 5 | . | . | 1 3

(F) 2 4 (H) 7 Pandereta
 16 f

- 7 | . | . | (I) 5
 p

pandereta

Musical staff with rhythmic notation: 4 4 4 | 4 5 5 | 2 7 (2) 1 2

ff
Cont. ^{r37}
^{r37}

Musical staff with rhythmic notation: - > 7 | 7 > 5 > 7 | 2 | - | -
Tamb.

Musical staff with rhythmic notation: 4 | | 6 | | (2) || 7 > 5 5

Musical staff with rhythmic notation: 7 (2) | 6 | 7 7 7 7 |
pandereta CHRIS

Musical staff with rhythmic notation: U | U | U | | | U | U | U |

caja ⁽³⁾ ⁽³⁾
Musical staff with rhythmic notation: 7 > 5 5 | 7 7 | 7 > 5 5
pandereta

Musical staff with rhythmic notation: 7 > 5 5 | 7 7 7 | 7 > 9 | - | 5 9

caja ^{pp}
Musical staff with rhythmic notation: 7 7 7 7 7 | > 7 7 5

ff
PESANTE ^{ritard}

Empty musical staff

Empty musical staff